

## WHITLAND WARD: ELECTORAL DIVISION PROFILE

Policy Research and Information Section, Carmarthenshire County Council, May 2012

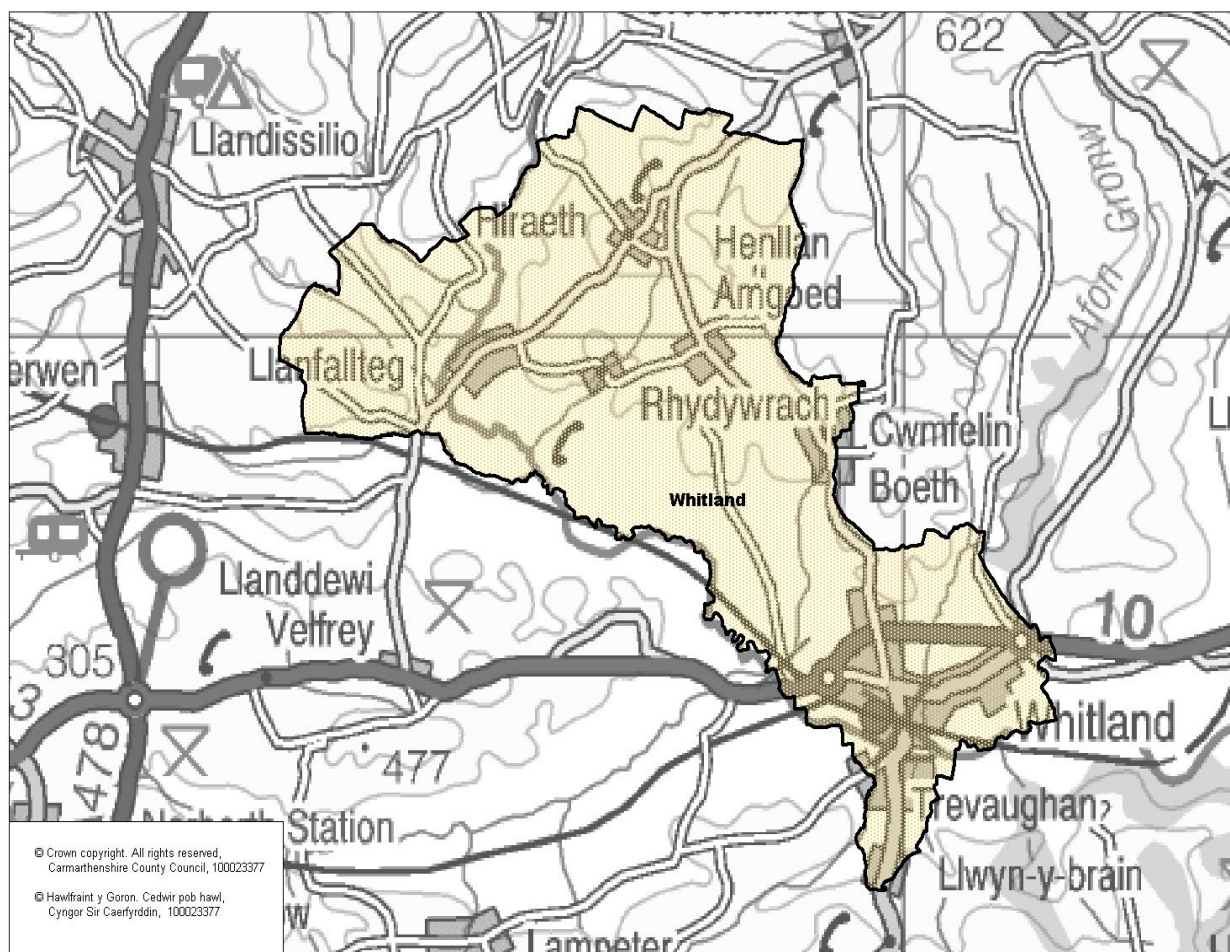
**Councillors (Electoral Vote 2012):** Sue Allen (Independent). Turnout = 48.56%

**Electorate (October 2011):** 1751

**Population:** 2,356 (mid -2010 Estimate)

**Welsh Assembly and UK Parliamentary Constituency:** Carmarthenshire West & Pembrokeshire

**Council owned Facilities:** Henllan Amgoed C.P. School, Whitland C.P. School, T.A.V.R. Hut, Ysgol Dyffryn Taf, Whitland Library



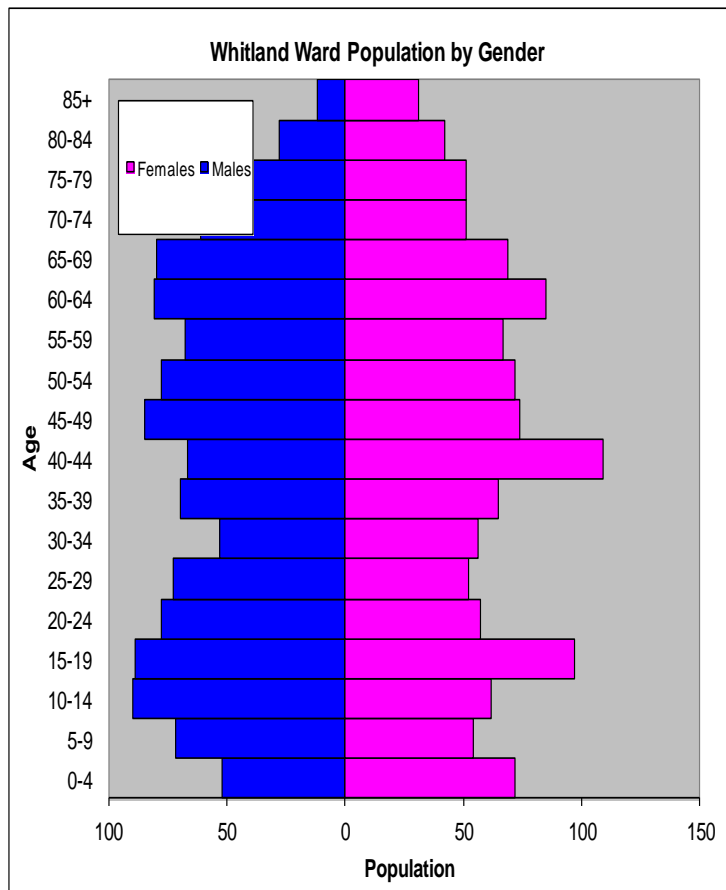
### Location: Approximately 23km from Carmarthen Town

- ⇒ Regeneration Designations: Rural Development Plan 2007-2013 eligible ward
- ⇒ Area: 22.34km<sup>2</sup>
- ⇒ Population Density: 105 people per km<sup>2</sup>
- ⇒ Population Change: 2001-2010: +295 (+12.5%)
- ⇒ Major Employers: Carmarthenshire County Council (schools and leisure)

## POPULATION STATISTICS 2010 Small Area Population Estimates

Age Structure	Whitland Population	Whitland %	Carmarthenshire %
Aged: 0-4	124	5.3	5.4
5-14	278	11.8	11.2
15-24	321	13.6	11.8
25-44	545	23.1	22.3
45-64	610	25.9	28.3
65-74	261	11.1	11.2
75+	217	9.2	11.5
<b>Total</b>	<b>2,356</b>	<b>100</b>	<b>100</b>

Births & Deaths	Whitland	Carmarthenshire
Birth (2010)	27	1,963
Births Rate	11.5	10.9
Deaths (2010)	19	2077
Death Rate	8.1	11.5



Source: Vital Statistics 2010, ONS.  
Note: birth/death rates expressed per '000

Source: aggregated lower Super Output Area (LSOA) Small Area Population Estimates, 2010, Office for National Statistics (ONS)

- ⇒ 17<sup>th</sup> lowest ward population in Carmarthenshire, and 27<sup>th</sup> lowest population density.
- ⇒ Highest proportion of people aged over 45.
- ⇒ Higher proportion of people with no qualifications
- ⇒ High proportion of Welsh Speakers

## 2001 Census Data

Population: Key Facts	Whitland	Whitland %	Carmarthenshire
<b>People:</b> born in Wales	1583	76.62	80.07
born outside UK	32	1.55	1.93
in non-white ethnic groups	13	0.63	0.94
with limiting long-term illness	451	21.82	26.27
with no qualifications (aged 16-74)	541	36.75	34.04
with higher level qualifications (aged 16-74)	238	16.17	17.24
able to speak Welsh	904	45.22	50.07

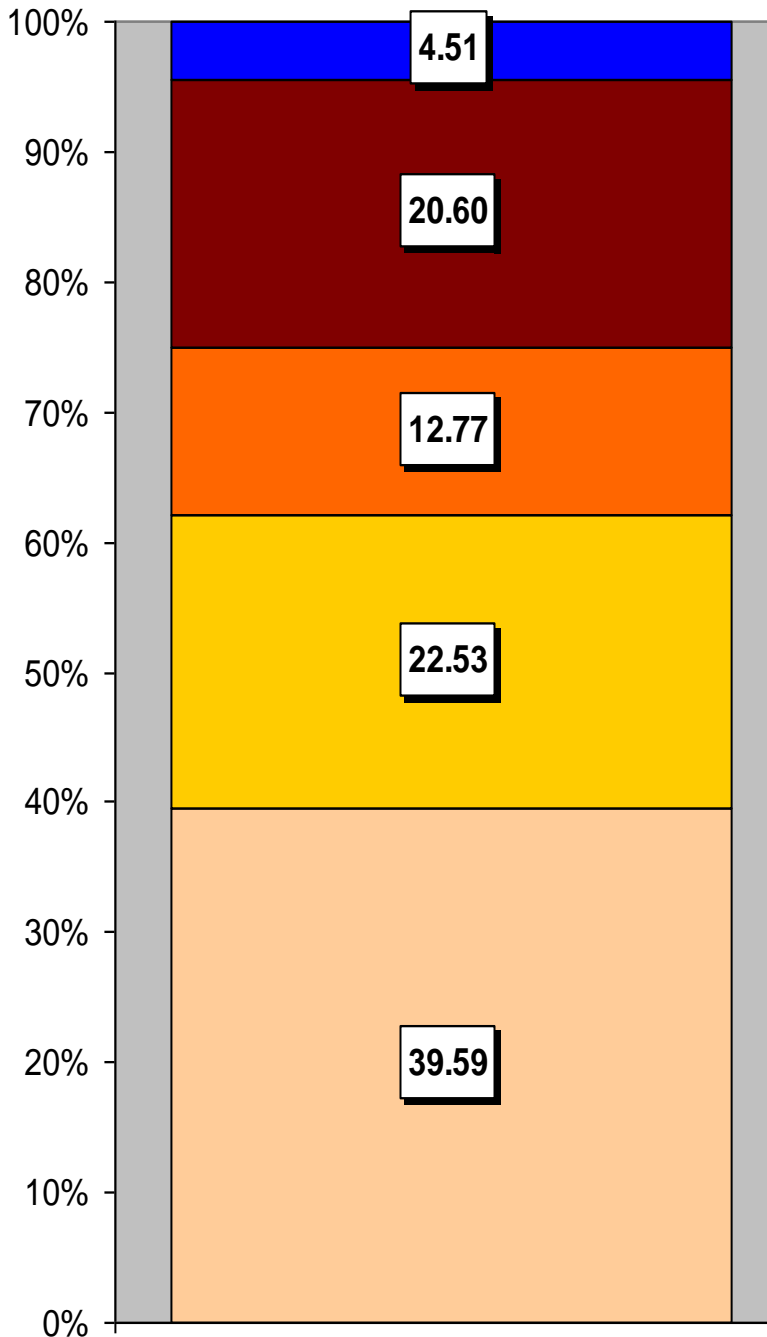
Household Composition	Whitland	Whitland %	Carmarthenshire
<b>Total Households/</b> (Average Household Size)	903	(2.29)	(2.33)
Household Type: one person: pensioner	165	18.27	17.15
one person: other	126	13.95	12.81
one family: all pensioners	93	10.3	10.38
one family: married couple	337	37.33	37.35
one family: cohabiting couple	57	6.31	6.26
one family: lone parent	71	7.87	10.29
one family: other	54	5.97	5.79

Source: 2001 Census, ONS

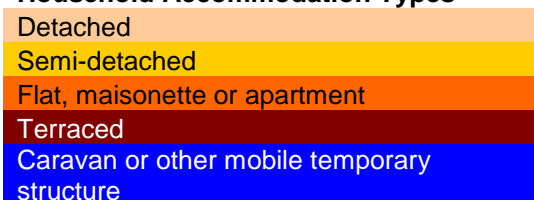
## HOUSING

The area's housing consists mostly of detached houses and a high proportion of terraced and semi-detached houses in comparison to the number of flats/maisonette or apartments. The ward consists of 90 local authority owned properties and 27 Housing Association properties.

### Household Accommodation Types



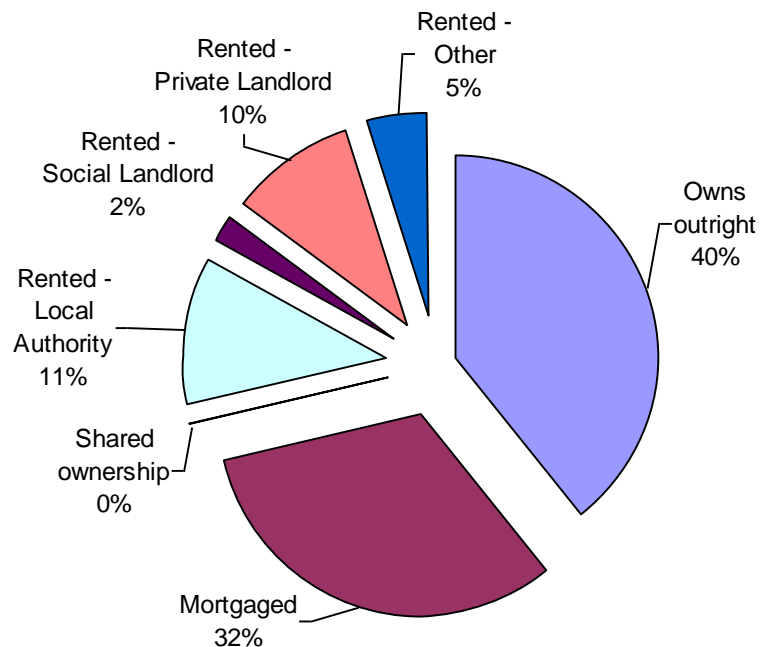
### Household Accommodation Types



### Household Tenure

Owns outright	40%
Mortgaged	32%
Shared Ownership	0%
Rented from Local Authority	11%
Rented from Registered Social Landlord	2%
Rented from Private Landlord	10%
Rented from other	5%

### Household Tenure



## SOCIO-ECONOMIC CHARACTERISTICS

- ⇒ The estimated median household income for Whitland, based on CACI's 2011 'PayCheck' data, is £22,944 which is the 19<sup>th</sup> lowest (of 58 wards) in Carmarthenshire and 21.3% below the Carmarthenshire mean of £29,156.
- ⇒ The social profile information indicates a higher than average level of people on state benefit, unemployed or low grade workers (grade E) and a higher than average skilled manual workers (grade C2).

Social Profile	Whitland	%	Carmarthenshire %
<i>All people aged 16-74 in households</i>	1637	100	100
<b>AB:</b> Higher and intermediate managerial/professional	246	15.03	16.42
<b>C1:</b> Supervisory, clerical, junior managerial/professional	455	27.79	28.5
<b>C2:</b> Skilled manual workers	370	22.6	18.81
<b>D:</b> Semi-skilled and unskilled manual workers	236	14.42	17.88
<b>E:</b> On state benefit, unemployed, lowest grade workers	330	20.16	18.38

Source: 2001 Census, ONS

## ECONOMY AND LABOUR MARKET

Benefit Claimants	Whitland	Rate %	Carmarthenshire Working Population %
Unemployment Benefit (JSA): March 2012	37	2.6	3.4
Incapacity Benefits (ESA/IB/SDA) August 2011	90	6.3	10.6
Income Support: August 2011	50	3.5	4.8
Disability Living Allowance: August 2011	140	9.7	14.6
Pension Credit: August 2011	125	8.7	9.1
State Pension Claimants: August 2011	535	37.2	38.8

Source: Jobcentre Plus administrative system Dept. for Work & Pensions

Economic Status (people aged 16-74)	Whitland	Whitland %	Carmarthenshire %
<b>Economically Active</b>	888	60.32	58.6
Employees: Part-time	153	10.39	10.75
Employees: Full-time	453	30.77	32.67
Self-employed	200	13.59	10.02
Unemployed	56	3.8	3.37
Full-time Student	26	1.77	1.78
<b>Economically Inactive</b>	584	39.67	41.4
Retired	265	18	16.12
Student	62	4.21	4.51
Looking after home/family	87	5.91	6.23
Permanently sick/disabled	116	7.88	11.07
Other	54	3.67	3.47

Source: 2001 Census, ONS

## WELSH INDEX OF MULTIPLE DEPRIVATION (WIMD)

WIMD 2011 based on fine-grained geography of lower Super Output Areas (LSOAs). The WIMD 2011 is compiled from eight domains, Income, Employment, Health, Education, Housing, Access to Services, Physical Environment and Community Safety and is published at Lower Super Output Area of which there are 112 in Carmarthenshire. Under WIMD, where Rank 1 is the most deprived, **Whitland** ranks as the 55<sup>th</sup> most deprived area in Carmarthenshire from 112 LSOAs and is ranked 899 in Wales from 1896 LSOAs.

The highest level of deprivation attributed to **Whitland** is the Housing domain, being ranked 3<sup>rd</sup> in Carmarthenshire and 326<sup>th</sup> in Wales for this domain

LSOA	Overall Index		Domains: Income		Employment		Health		Education		Housing		Access to Services		Physical Environment		Community Safety	
	55	899	67	1111	88	1221	72	1002	46	874	3	326	27	181	26	462	78	1603
Whitland	55	899	67	1111	88	1221	72	1002	46	874	3	326	27	181	26	462	78	1603

Source: Welsh Index of Multiple Deprivation 2011 (released August 2011), Welsh Assembly Government.

Note: LSOAs ranked 1-112 (Carmarthenshire), 1-1896 (Wales).

## CRIME

Whitland	Offence Group											Annual Total
	Fiscal Year (1st April to 31st March)	Violence against the Person	Sexual Offences	Robbery	Burglary	Auto crime	General Theft	Fraud and Forgery	Criminal Damage	Drug Offences	Other	
2008/2009	15	4	0	7	6	17	3	14	6	0	72	
2009/2010	12	0	0	8	2	9	0	11	18	0	60	
2010/2011	18	4	0	6	4	15	1	10	18	1	77	

Source: Dyfed Powys Police, Headquarters, Llangunor.

**For further information please contact:**

Lesley Rees, Policy & Research Officer

01267 224462

llrees@carmarthenshire.gov.uk