

## MANORDEILO & SALEM WARD: ELECTORAL DIVISION PROFILE

Policy Research and Information Section, Carmarthenshire County Council, May 2012

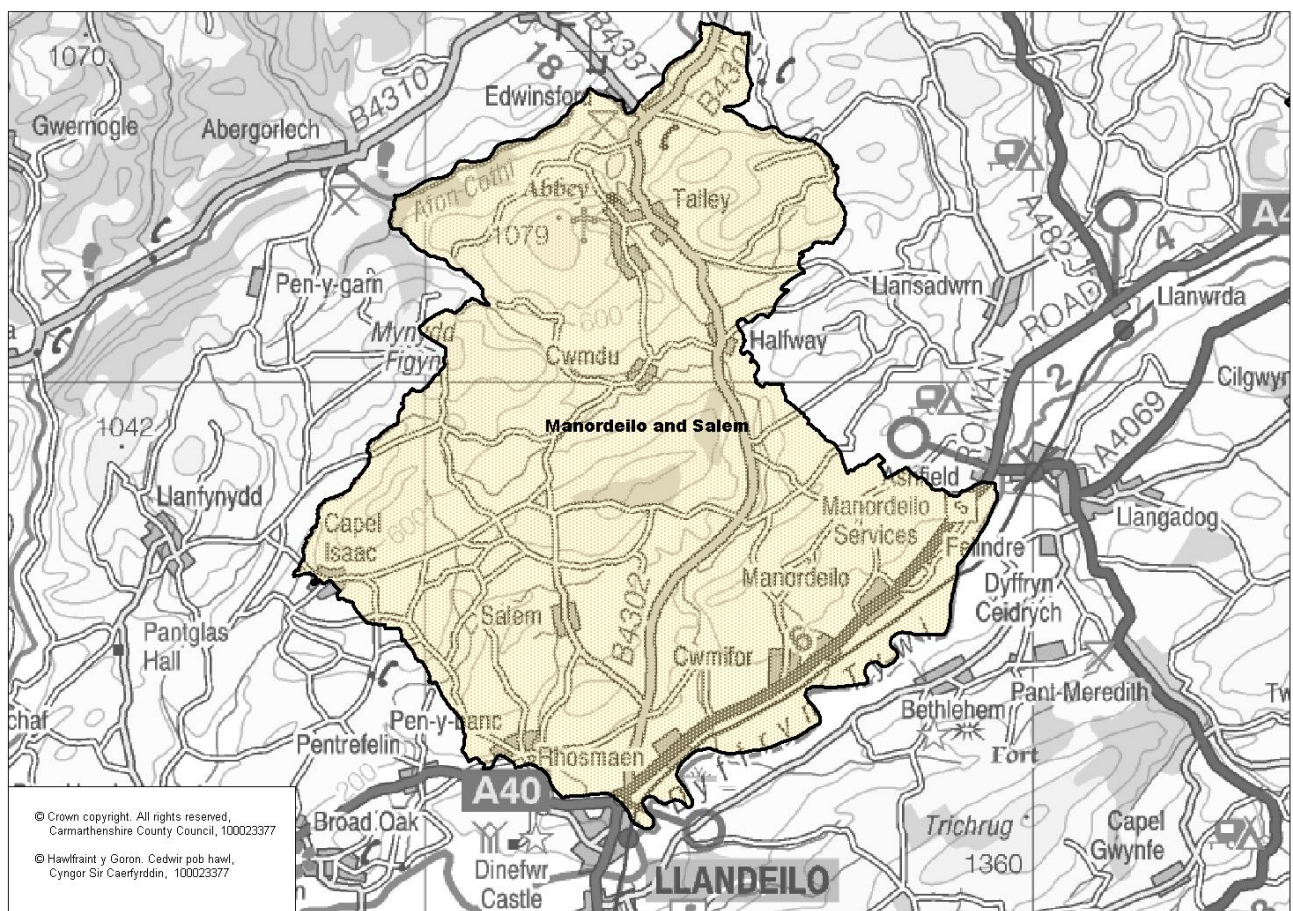
**Councillors (Electoral Vote 2012):** Joseph Davies (Independent). Turnout = 49.72%

**Electorate (October 2011):** 1812

**Population:** 2,273 (mid -2010 Estimate)

**Welsh Assembly and UK Parliamentary Constituency:** Carmarthenshire East & Dinefwr

**Council owned Facilities:** Cwm-lfor C.P. School, Talley C.P. School, Dolau Tywi Play Area



**Location: Approximately 28km from Carmarthen Town**

- ⇒ Regeneration Designations: Rural Development Plan 2007-2013 eligible ward
- ⇒ Area: 79.95km<sup>2</sup>
- ⇒ Population Density: 28 people per km<sup>2</sup>
- ⇒ Population Change: 2001-2010: +155 (+6.8%)
- ⇒ Major Employers: Carmarthenshire County Council (schools and leisure)

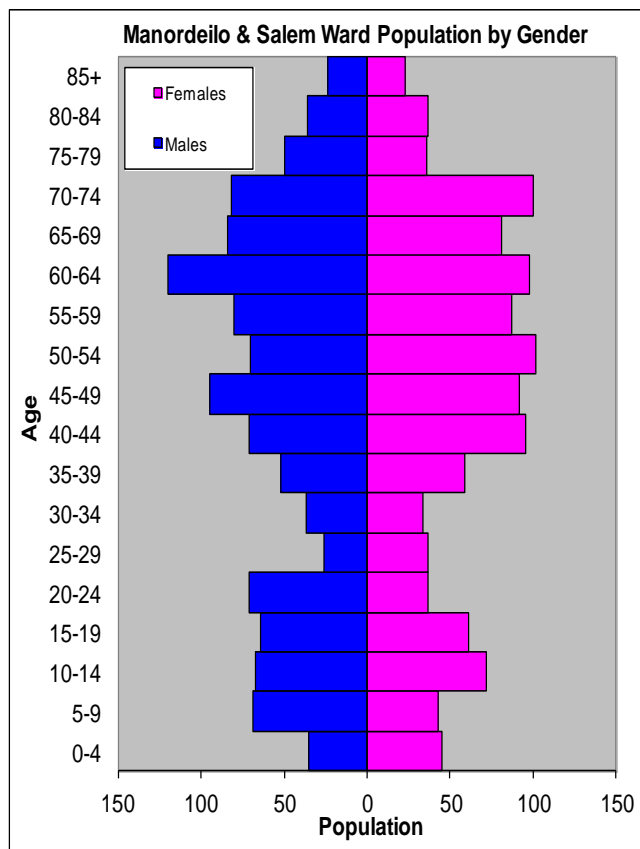
## POPULATION STATISTICS

### 2010 Small Area Population Estimates

Age Structure	Manordeilo & Salem Population	Manordeilo & Salem %	Carmarthenshire %
Aged: 0-4	80	3.5	5.4
5-14	251	11.0	11.2
15-24	233	10.3	11.8
25-44	412	18.1	22.3
45-64	744	32.7	28.3
65-74	347	15.3	11.2
75+	206	9.1	11.5
<b>Total</b>	<b>2,273</b>	<b>100</b>	<b>100</b>

Births & Deaths	Manordeilo & Salem	Carmarthenshire
Birth (2010)	15	1,963
Births Rate	6.6	10.9
Deaths (2010)	23	2077
Death Rate	10.1	11.5

Source: Vital Statistics 2010, ONS.  
Note: birth/death rates expressed per '000



Source: aggregated lower Super Output Area (LSOA) Small Area Population Estimates, 2010, Office for National Statistics (ONS)

- ⇒ 14<sup>th</sup> lowest ward population in Carmarthenshire, and 10<sup>th</sup> lowest population density.
- ⇒ Highest proportion of people aged over 45, proportion aged 65-74 relatively high compared to the Carmarthenshire Average.
- ⇒ Higher proportion of people with no qualifications
- ⇒ High proportion of Welsh Speakers

## 2001 Census Data

Population: Key Facts	Manordeilo & Salem	Manordeilo & Salem %	Carmarthenshire
<b>People:</b> born in Wales	1326	62.52	80.07
born outside UK	54	2.55	1.93
in non-white ethnic groups	10	0.47	0.94
with limiting long-term illness	419	19.75	26.27
with no qualifications (aged 16-74)	464	29.44	34.04
with higher level qualifications (aged 16-74)	341	21.64	17.24
able to speak Welsh	1015	49.37	50.07

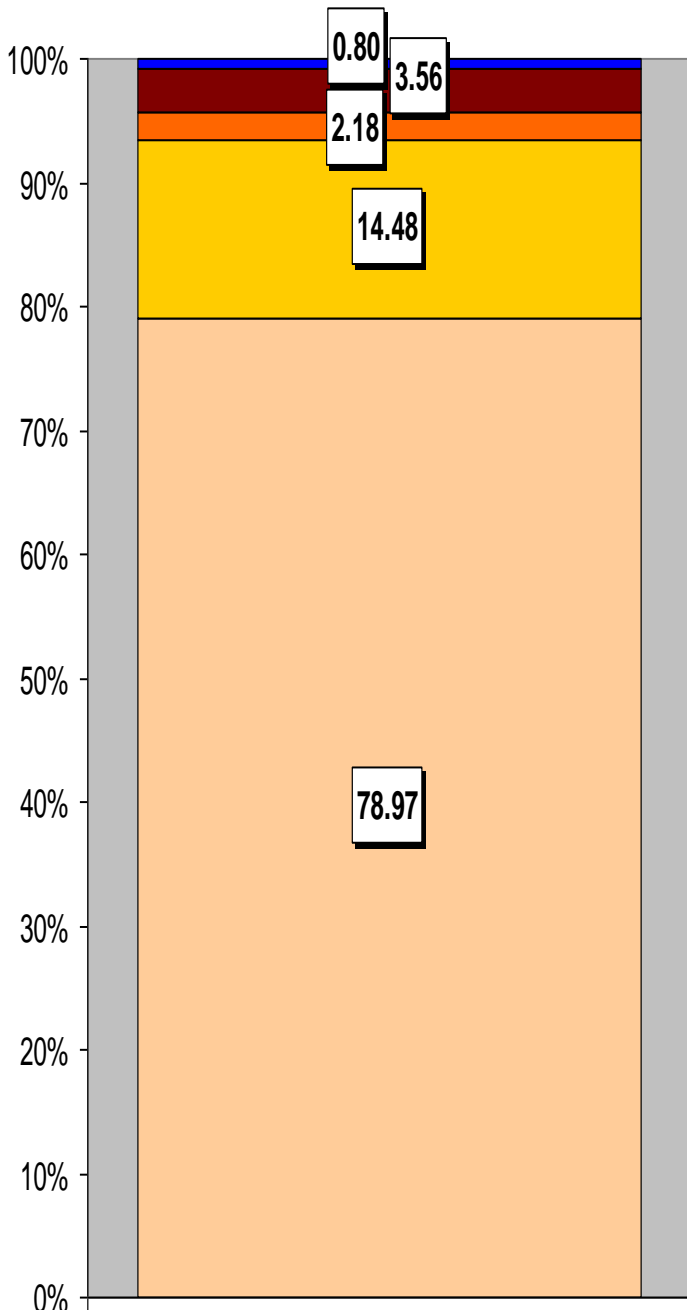
Household Composition	Manordeilo & Salem	Manordeilo & Salem %	Carmarthenshire
<b>Total Households/</b> (Average Household Size)	833	(2.52)	(2.33)
Household Type: one person: pensioner	105	12.61	17.15
one person: other	68	8.16	12.81
one family: all pensioners	88	10.56	10.38
one family: married couple	407	48.86	37.35
one family: cohabiting couple	52	6.24	6.26
one family: lone parent	59	7.08	10.29
one family: other	54	6.48	5.79

Source: 2001 Census, ONS

## HOUSING

The area's housing consists mostly of detached houses with a small proportion of semi-detached houses and very low proportion of flat/maisonette or apartments and terraced housing. The ward consists of 27 local authority owned properties and 8 Housing Association properties.

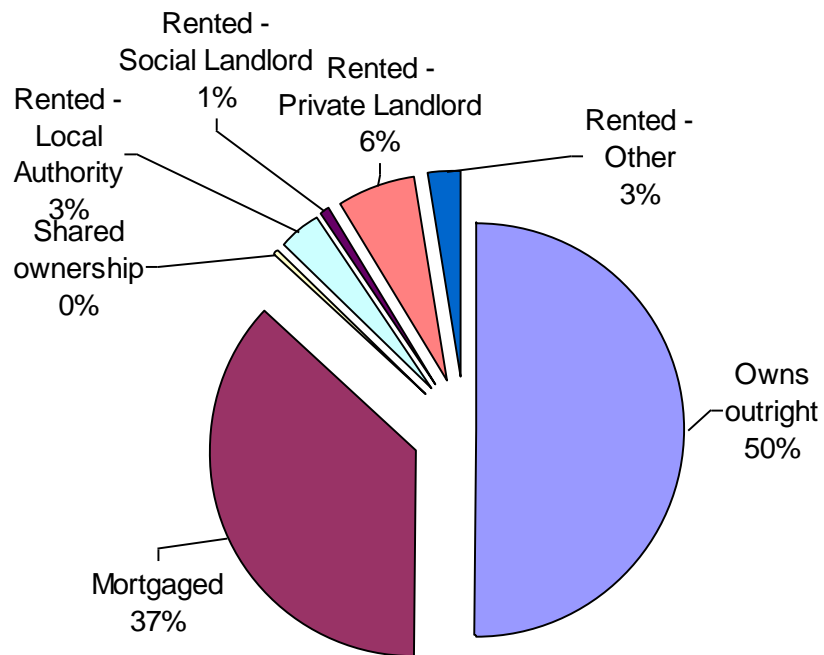
### Household Accommodation Types



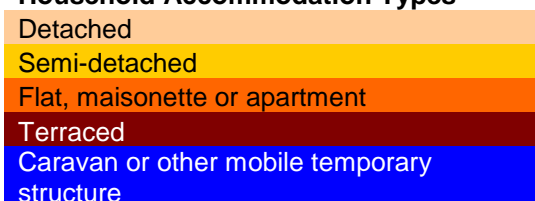
### Household Tenure

Owns outright	50%
Mortgaged	37%
Shared Ownership	0%
Rented from Local Authority	3%
Rented from Registered Social Landlord	1%
Rented from Private Landlord	6%
Rented from other	3%

### Household Tenure



### Household Accommodation Types



## SOCIO-ECONOMIC CHARACTERISTICS

- ⇒ The estimated median household income for Manordeilo and Salem, based on CACI's 2011 'PayCheck' data, is £27,837 which is the 10<sup>th</sup> highest (of 58 wards) in Carmarthenshire and 4.5% below the Carmarthenshire mean of £29,156.
- ⇒ The social profile information indicates a lower than average level of people on state benefit, unemployed or low grade workers (grade E) and a higher than average proportion of skilled workers (grade C2).

Social Profile	Manordeilo & Salem	%	Carmarthenshire %
<i>All people aged 16-74 in households</i>	1698	100	100
<b>AB:</b> Higher and intermediate managerial/professional	417	24.56	16.42
<b>C1:</b> Supervisory, clerical, junior managerial/professional	455	26.8	28.5
<b>C2:</b> Skilled manual workers	371	21.85	18.81
<b>D:</b> Semi-skilled and unskilled manual workers	212	12.49	17.88
<b>E:</b> On state benefit, unemployed, lowest grade workers	243	14.31	18.38

Source: 2001 Census, ONS

## ECONOMY AND LABOUR MARKET

Benefit Claimants	Manordeilo & Salem	Rate %	Carmarthenshire Working Population %
Unemployment Benefit (JSA): March 2012	25	1.8	3.4
Incapacity Benefits (ESA/IB/SDA) August 2011	130	9.5	10.6
Income Support: August 2011	50	3.7	4.8
Disability Living Allowance: August 2011	160	11.7	14.6
Pension Credit: August 2011	90	6.6	9.1
State Pension Claimants: August 2011	610	44.6	38.8

Source: Jobcentre Plus administrative system Dept. for Work & Pensions

Economic Status (people aged 16-74)	Manordeilo & Salem	Manordeilo & Salem %	Carmarthenshire %
<b>Economically Active</b>	967	61.36	58.6
Employees: Part-time	146	9.26	10.75
Employees: Full-time	432	27.41	32.67
Self-employed	318	20.18	10.02
Unemployed	45	2.86	3.37
Full-time Student	26	1.65	1.78
<b>Economically Inactive</b>	609	38.64	41.4
Retired	274	17.39	16.12
Student	68	4.31	4.51
Looking after home/family	104	6.6	6.23
Permanently sick/disabled	122	4.47	11.07
Other	41	2.6	3.47

Source: 2001 Census, ONS

## WELSH INDEX OF MULTIPLE DEPRIVATION (WIMD)

WIMD 2011 based on fine-grained geography of lower Super Output Areas (LSOAs). The WIMD 2011 is compiled from eight domains, Income, Employment, Health, Education, Housing, Access to Services, Physical Environment and Community Safety and is published at Lower Super Output Area of which there are 112 in Carmarthenshire. Under WIMD, where Rank 1 is the most deprived, **Manordeilo and Salem** ranks 69 in Carmarthenshire from 112 LSOAs and is ranked 1019 in Wales from 1896 LSOAs.

The highest level of deprivation attributed to **Manordeilo and Salem** is the Access to Services domain, being ranked 4<sup>th</sup> in Carmarthenshire and 21<sup>th</sup> in Wales for this domain.

### Manordeilo and Salem – Manordeilo and Salem

LSOA	Overall Index		Domains: Income		Employment		Health		Education		Housing		Access to Services		Physical Environment		Community Safety	
	69	1019	84	1230	70	1022	111	1751	88	1296	81	1275	4	21	98	1476	99	1861
Manordeilo & Salem																		

Source: Welsh Index of Multiple Deprivation 2011 (released August 2011), Welsh Assembly Government.

Note: LSOAs ranked 1-112 (Carmarthenshire), 1-1896 (Wales).

## CRIME

Manordeilo / Salem	Offence Group											Annual Total
	Violence against the Person	Sexual Offences	Robbery	Burglary	Auto crime	General Theft	Fraud and Forgery	Criminal Damage	Drug Offences	Other		
<b>2008/2009</b>	8	0	0	2	2	5	2	4	3	0	26	
<b>2009/2010</b>	6	0	0	4	1	6	0	1	1	1	20	
<b>2010/2011</b>	2	1	0	6	2	8	0	1	4	1	25	

Source: Dyfed Powys Police, Headquarters, Llangunnor.

**For further information please contact:**

Lesley Rees, Policy & Research Officer

01267 224462

llrees@carmarthenshire.gov.uk