

## LLWYNHENDY WARD: ELECTORAL DIVISION PROFILE

Policy Research and Information Section, Carmarthenshire County Council, May 2012

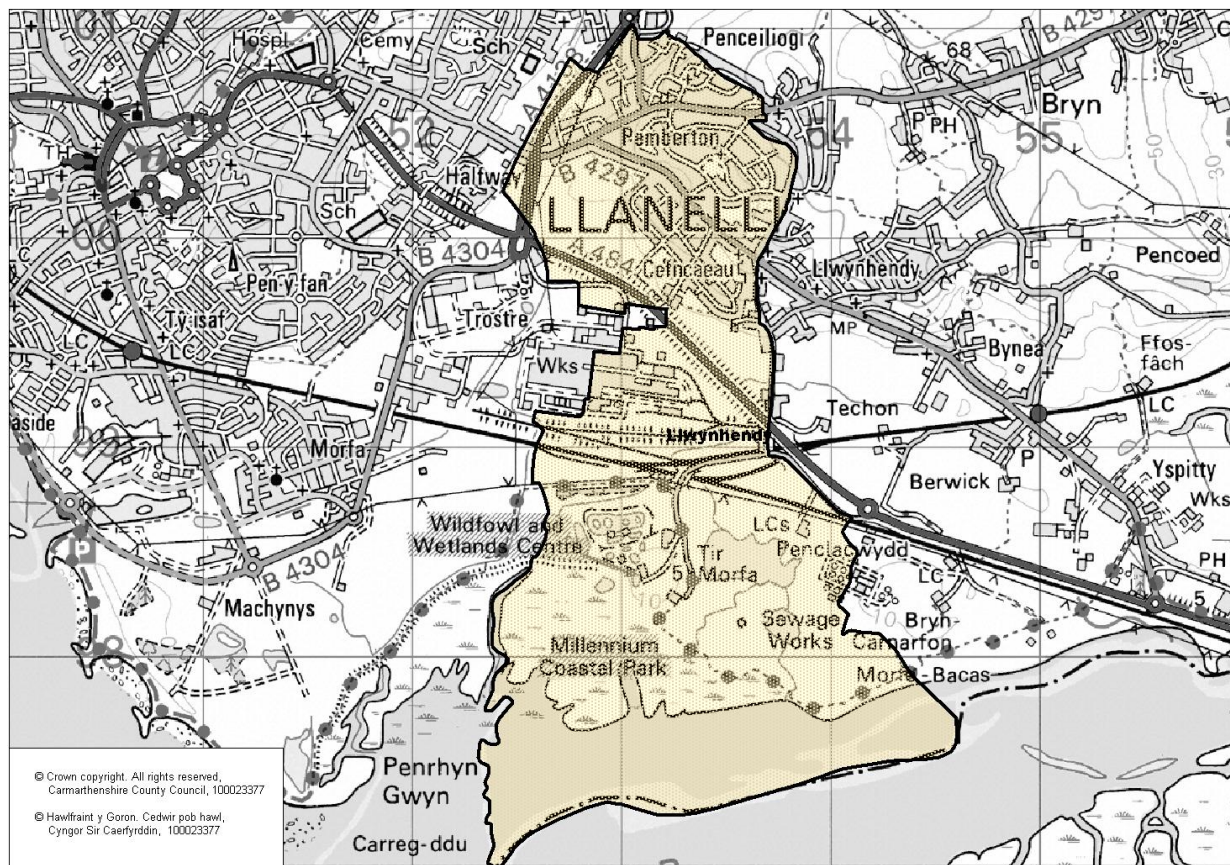
**Councillors (Electoral Vote 2012 – Turnout = 33.67%):** Theresa Bowen and Sharen Davies (Labour)

**Electorate (October 2011):** 3218

**Population:** 4,364 (mid -2010 Estimate)

**Welsh Assembly and UK Parliamentary Constituency:** Llanelli

**Council owned Facilities:** Dwyfor Childrens Home, Llys Caradog Childrens Respite Home, Gelli Road Childrens Home, Tir Einon Respite Care Home, Llwynhendy Integrated Childrens Centre, Ysgol yr Ynys (Brynsierfel), Ysgol Brynsierfel, Bryn Teg C.P. School, Parc Y Scarlets Stadium, Llwynhendy Community Centre, Llwynhendy Library, Penclacwydd Wildfowl & Wetlands Centre, Bethel Chapel



**Location: Approximately 36km from Carmarthen Town**

- ⇒ Area: 4.84km<sup>2</sup>
- ⇒ Population Density: 902 people per km<sup>2</sup>
- ⇒ Population Change: 2001-2010: +89 (+2.0%)
- ⇒ Major Employers: Carmarthenshire County Council (schools and leisure)

## POPULATION STATISTICS

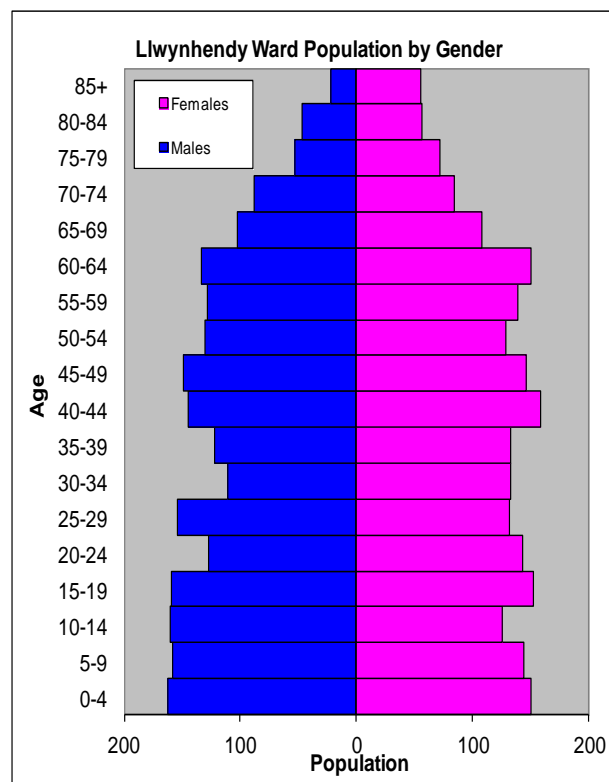
### 2010 Small Area Population Estimates

Age Structure	Llwynhendy Population	Llwynhendy %	Carmarthenshire %
Aged: 0-4	312	7.1	5.4
5-14	588	13.5	11.2
15-24	582	13.3	11.8
25-44	1089	25.0	22.3
45-64	1105	25.3	28.3
65-74	383	8.8	11.2
75+	305	7.0	11.5
<b>Total</b>	<b>4,364</b>	<b>100</b>	<b>100</b>

Births & Deaths	Llwynhendy	Carmarthenshire
Birth (2010)	79	1,963
Births Rate	18.1	10.9
Deaths (2010)	35	2077
Death Rate	8.0	11.5

Source: Vital Statistics 2010, ONS.

Note: birth/death rates expressed per '000



Source: aggregated lower Super Output Area (LSOA) Small Area Population Estimates, 2010, Office for National Statistics (ONS)

- ⇒ 8<sup>th</sup> highest ward population in Carmarthenshire, and 9<sup>th</sup> highest population density.
- ⇒ Highest proportion of people aged over 25, proportion aged over 75 relatively lower than the Carmarthenshire Average.
- ⇒ Higher proportion of people with no qualifications and limiting long-term illness.
- ⇒ High proportion of Welsh Speakers

## 2001 Census Data

Population: Key Facts	Llwynhendy	Llwynhendy %	Carmarthenshire
<b>People:</b> born in Wales	3809	89.08	80.07
born outside UK	58	1.35	1.93
in non-white ethnic groups	32	0.75	0.94
with limiting long-term illness	1319	30.84	26.27
with no qualifications (aged 16-74)	1311	44.94	34.04
with higher level qualifications (aged 16-74)	247	8.47	17.24
able to speak Welsh	1356	33.03	50.07

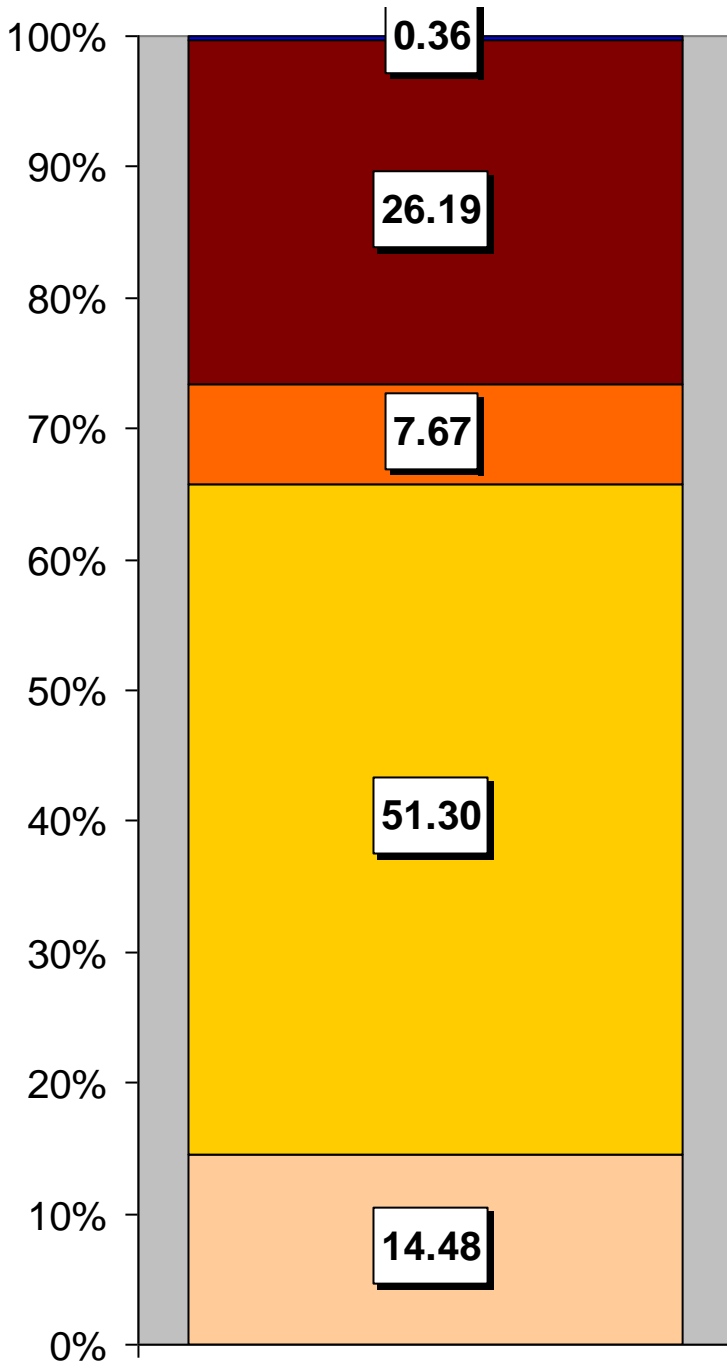
Household Composition	Llwynhendy	Llwynhendy %	Carmarthenshire
<b>Total Households/</b> (Average Household Size)	1830	(2.34)	(2.33)
Household Type: one person: pensioner	321	17.54	17.15
one person: other	256	13.99	12.81
one family: all pensioners	159	8.69	10.38
one family: married couple	606	33.12	37.35
one family: cohabiting couple	131	7.51	6.26
one family: lone parent	251	13.72	10.29
one family: other	106	5.79	5.79

Source: 2001 Census, ONS

## HOUSING

The area's housing consists mostly of semi-detached houses. There is a higher proportion of terraced housing in comparison to detached houses. The ward consists of 754 local authority owned properties and 46 Housing Association properties.

### Household Accommodation Types



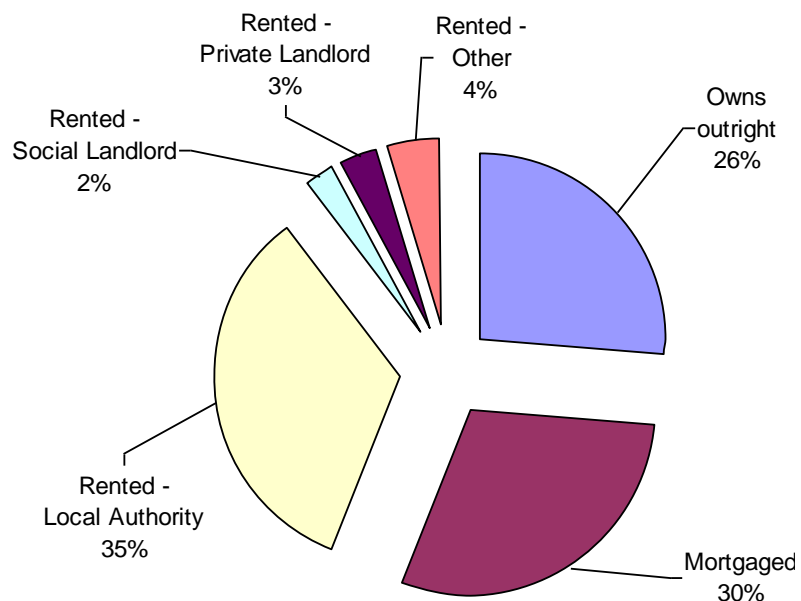
### Household Accommodation Types



### Household Tenure

Owns outright	26%
Mortgaged	30%
Shared Ownership	0%
Rented from Local Authority	35%
Rented from Registered Social Landlord	2%
Rented from Private Landlord	3%
Rented from other	4%

### Household Tenure



## SOCIO-ECONOMIC CHARACTERISTICS

- ⇒ The estimated median household income for Llwynhendy, based on CACI's 2011 'PayCheck' data, is £19,750 which is the 5<sup>th</sup> lowest (of 58 wards) in Carmarthenshire and 32.3% below the Carmarthenshire mean of £29,156.
- ⇒ The social profile information indicates a higher than average level of people on state benefit, unemployed or low grade workers (grade E) and a higher than average semi-skilled and unskilled manual workers (grade D).

Social Profile	Llwynhendy	%	Carmarthenshire %
<i>All people aged 16-74 in households</i>	3291	100	100
<b>AB:</b> Higher and intermediate managerial/professional	326	9.91	16.42
<b>C1:</b> Supervisory, clerical, junior managerial/professional	733	22.27	28.5
<b>C2:</b> Skilled manual workers	529	16.07	18.81
<b>D:</b> Semi-skilled and unskilled manual workers	882	26.8	17.88
<b>E:</b> On state benefit, unemployed, lowest grade workers	821	24.95	18.38

Source: 2001 Census, ONS

## ECONOMY AND LABOUR MARKET

Benefit Claimants	Llwynhendy	Rate %	Carmarthenshire Working Population %
Unemployment Benefit (JSA): March 2012	147	5.4	3.4
Incapacity Benefits (ESA/IB/SDA) August 2011	420	15.5	10.6
Income Support: August 2011	255	9.4	4.8
Disability Living Allowance: August 2011	540	19.9	14.6
Pension Credit: August 2011	300	11.1	9.1
State Pension Claimants: August 2011	800	29.5	38.8

Source: Jobcentre Plus administrative system Dept. for Work & Pensions

Economic Status (people aged 16-74)	Llwynhendy	Llwynhendy %	Carmarthenshire %
<b>Economically Active</b>	1,518	52.04	58.6
Employees: Part-time	308	10.56	10.75
Employees: Full-time	909	31.16	32.67
Self-employed	98	3.36	10.02
Unemployed	139	4.77	3.37
Full-time Student	64	2.19	1.78
<b>Economically Inactive</b>	1,399	47.97	41.4
Retired	418	14.33	16.12
Student	97	3.33	4.51
Looking after home/family	256	8.78	6.23
Permanently sick/disabled	466	15.98	11.07
Other	162	5.55	3.47

Source: 2001 Census, ONS

## WELSH INDEX OF MULTIPLE DEPRIVATION (WIMD)

WIMD 2011 based on fine-grained geography of lower Super Output Areas (LSOAs). The WIMD 2011 is compiled from eight domains, Income, Employment, Health, Education, Housing, Access to Services, Physical Environment and Community Safety and is published at Lower Super Output Area of which there are 112 in Carmarthenshire.

Under WIMD, where Rank 1 is the most deprived, **Llwynhendy 1** ranks 38<sup>th</sup> in Carmarthenshire from 112 LSOAs and is ranked 686 in Wales from 1896 LSOAs.

**Llwynhendy 2** ranks as the 9<sup>th</sup> most deprived area in Carmarthenshire and is ranked 259 from 1896 LSOAs in Wales. **Llwynhendy 3** ranks as the 6<sup>th</sup> most deprived area in Carmarthenshire and is ranked 171 from 1896 LSOAs in Wales.

The highest level of deprivation attributed to **Llwynhendy 1** is the Community Safety domain, being ranked 26<sup>th</sup> in Carmarthenshire and 929 in Wales for this domain. In **Llwynhendy 2** the Income and Housing domains are the most prominent both ranking 6<sup>th</sup> in Carmarthenshire and 196 and 367 respectively in Wales. In **Llwynhendy 3** the Income domain is the most prominent ranking 4<sup>th</sup> in Carmarthenshire and 153 in Wales.

**Llwynhendy 1 - Pemberton**

**Llwynhendy 2 – Cefn Caeau North**

**Llwynhendy 3 – Penclacwydd Cefn Caeau South**

LSOA	Overall Index		Income		Employment		Health		Education		Housing		Access to Services		Physical Environment		Community Safety	
	Rank	Wales	Rank	Wales	Rank	Wales	Rank	Wales	Rank	Wales	Rank	Wales	Rank	Wales	Rank	Wales	Rank	Wales
Llwynhendy 1	38	686	33	681	30	522	35	622	34	690	79	1259	87	1076	29	490	26	929
Llwynhendy 2	9	259	6	196	9	223	14	322	7	247	6	367	98	1490	78	1206	19	785
Llwynhendy 3	6	171	4	153	7	183	5	120	5	182	24	695	106	1719	34	533	8	309

Source: Welsh Index of Multiple Deprivation 201 (released August 2011), Welsh Assembly Government.

Note: LSOAs ranked 1-112 (Carmarthenshire), 1-1896 (Wales).

## CRIME

Llwynhendy	Offence Group										Annual Total
	Violence against the Person	Sexual Offences	Robbery	Burglary	Auto crime	General Theft	Fraud and Forgery	Criminal Damage	Drug Offences	Other	
<b>2008/2009</b>	69	4	0	31	38	37	12	83	31	1	306
<b>2009/2010</b>	66	5	0	23	8	40	8	50	46	1	247
<b>2010/2011</b>	52	8	0	19	16	49	7	41	49	1	242

Source: Dyfed Powys Police, Headquarters, Llangunnor.

**For further information please contact:**

Lesley Rees, Policy & Research Officer

01267 224462

llrees@carmarthenshire.gov.uk