

LLANGYNDEYRN WARD: ELECTORAL DIVISION PROFILE

Policy Research and Information Section, Carmarthenshire County Council, May 2012

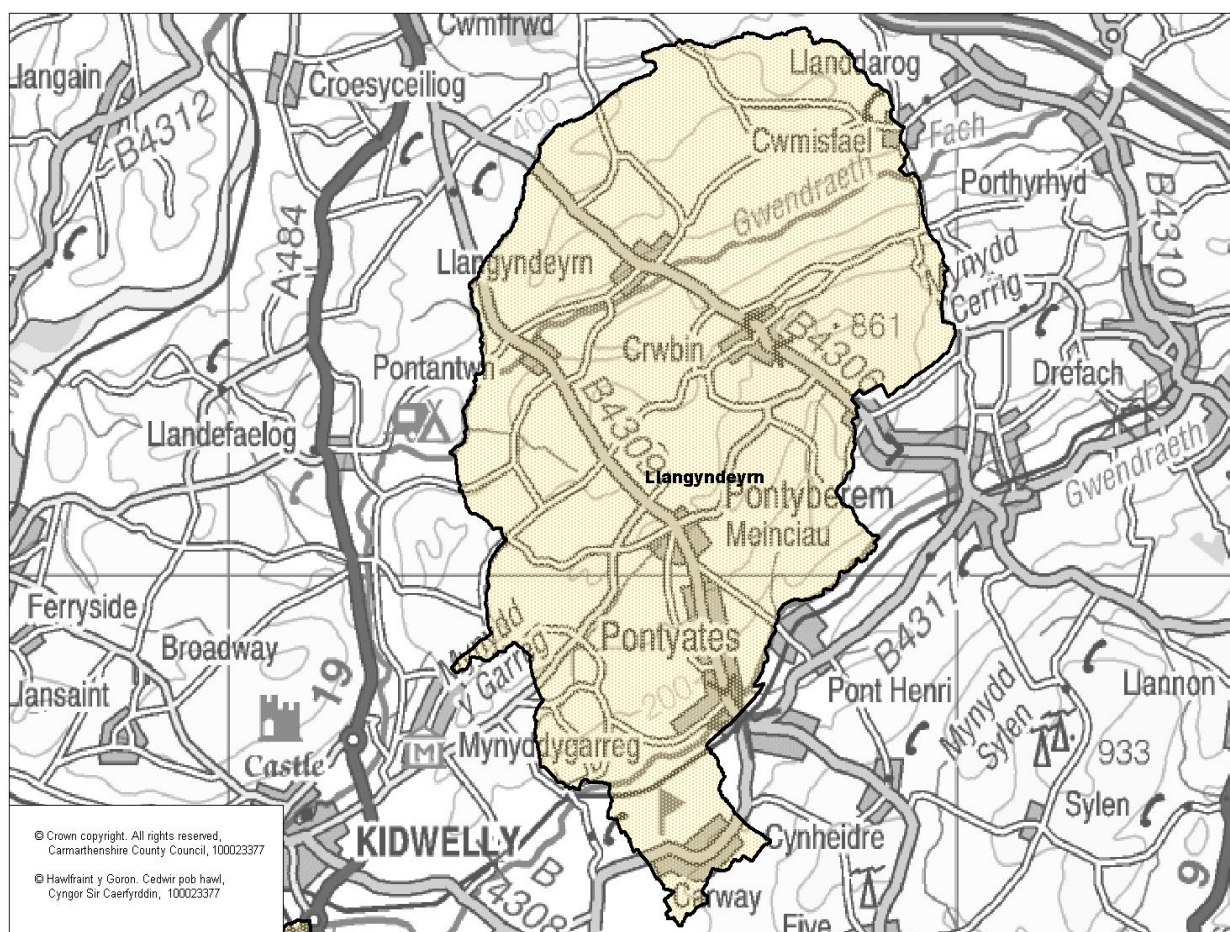
Councillors (Electoral Vote 2012): Tyssul Evans (Plaid Cymru). Turnout = 45.45%

Electorate (October 2011): 2488

Population: 2,959 (mid -2010 Estimate)

Welsh Assembly and UK Parliamentary Constituency: Carmarthenshire East & Dinefwr

Council owned Facilities: Pontyates Day Centre, Ysgol Y Fro (Llangyndeyrn), Gwynfryn C.P. School, Carway C.P. School, Pontyates Community Gardens, Pontyates Library, Glyn Abbey Golf Course, Pontnewydd Woodlands & Wetlands



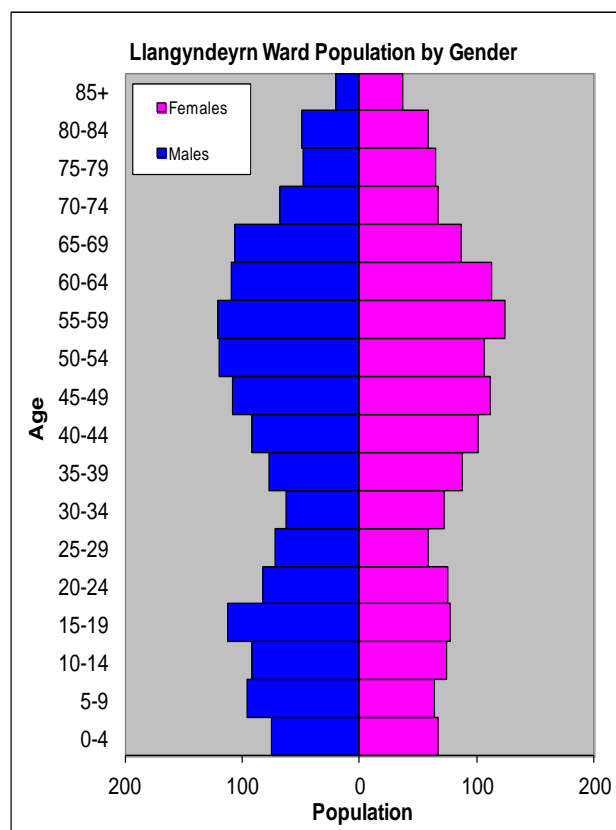
Location: Approximately 8km from Carmarthen Town

- ⇒ Regeneration Designations: Rural Development Plan 2007-2013 eligible ward
- ⇒ Area: 47.04km²
- ⇒ Population Density: 63 people per km²
- ⇒ Population Change: 2001-2010: +4 (+0.1%)
- ⇒ Major Employers: Carmarthenshire County Council (schools and leisure)

POPULATION STATISTICS 2010 Small Area Population Estimates

Age Structure	Llangydeyrn Population	Llangydeyrn %	Carmarthenshire %
Aged: 0-4	142	4.8	5.4
5-14	326	11.0	11.2
15-24	347	11.7	11.8
25-44	624	21.1	22.3
45-64	914	30.9	28.3
65-74	328	11.1	11.2
75+	278	9.4	11.5
Total	2,959	100.1	100

Births & Deaths	Llangydeyrn	Carmarthenshire
Birth (2010)	24	1,963
Births Rate	8.1	10.9
Deaths (2010)	38	2077
Death Rate	12.8	11.5



Source: Vital Statistics 2010, ONS.

Note: birth/death rates expressed per '000

Source: aggregated lower Super Output Area (LSOA) Small Area Population Estimates, 2010, Office for National Statistics (ONS)

- ⇒ 27th highest ward population in Carmarthenshire, and 20th lowest population density.
- ⇒ Highest proportion of people aged over 45, proportion aged over 75 slightly lower than the Carmarthenshire Average.
- ⇒ Higher proportion of people with no qualifications and limiting long-term illness.
- ⇒ Higher proportion of Welsh Speakers than the Carmarthenshire average

2001 Census Data

Population: Key Facts	Llangydeyrn	Llangydeyrn %	Carmarthenshire
People: born in Wales	2409	81.58	80.07
born outside UK	29	0.98	1.93
in non-white ethnic groups	18	0.6	0.94
with limiting long-term illness	846	28.64	26.27
with no qualifications (aged 16-74)	793	37.13	34.04
with higher level qualifications (aged 16-74)	327	15.31	17.24
able to speak Welsh	1865	65.43	50.07

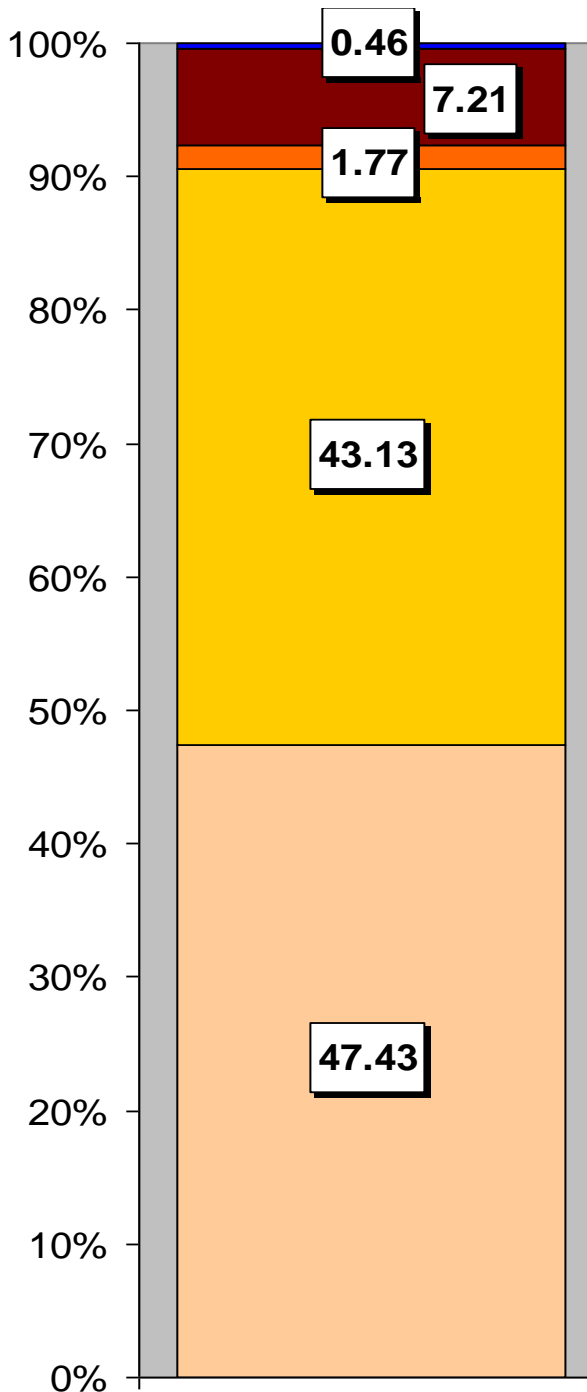
Household Composition	Llangydeyrn	Llangydeyrn %	Carmarthenshire
Total Households/ (Average Household Size)	1221	(2.42)	(2.33)
Household Type: one person: pensioner	205	16.79	17.15
one person: other	135	11.06	12.81
one family: all pensioners	124	10.16	10.38
one family: married couple	493	40.37	37.35
one family: cohabiting couple	89	7.29	6.26
one family: lone parent	102	8.35	10.29
one family: other	73	5.98	5.79

Source: 2001 Census, ONS

HOUSING

The area's housing consists mostly of detached and semi-detached houses, which combined almost make up 91% of the houses in Llangyndeyrn. There is a higher proportion of terraced houses compared to flat, maisonette and apartments. The ward consists of 259 local authority owned properties and 27 Housing Association properties.

Household Accommodation Types



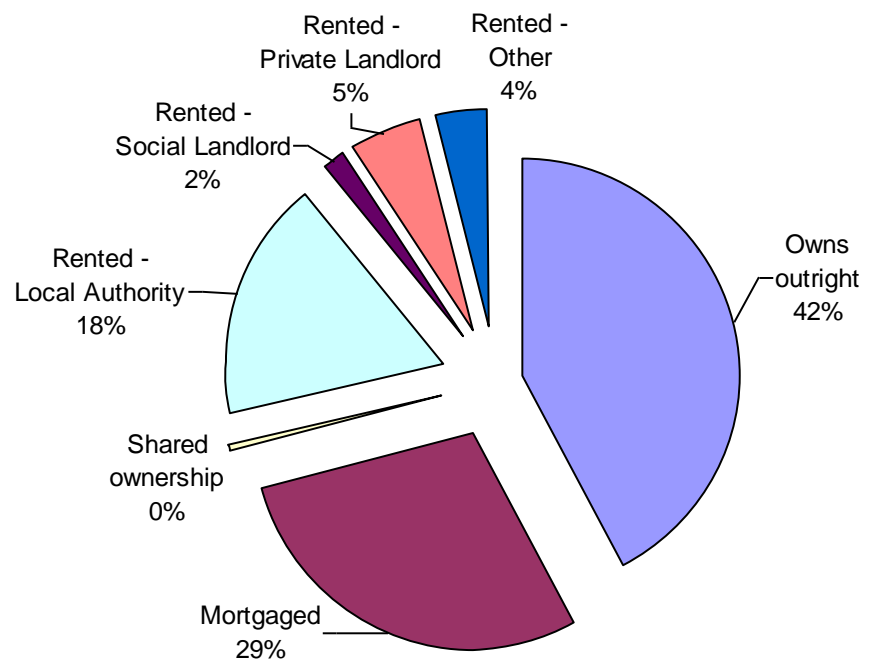
Household Accommodation Types



Household Tenure

Owns outright	42%
Mortgaged	29%
Shared Ownership	0%
Rented from Local Authority	18%
Rented from Registered Social Landlord	2%
Rented from Private Landlord	5%
Rented from other	4%

Household Tenure



SOCIO-ECONOMIC CHARACTERISTICS

- ⇒ The estimated median household income for Llangydeyrn, based on CACI's 2011 'PayCheck' data, is £23,294 which is the 20th lowest (of 58 wards) in Carmarthenshire and 20.1% below the Carmarthenshire mean of £29,156.
- ⇒ The social profile information indicates a slightly higher than average level of people on state benefit, unemployed or low grade workers (grade E) as well as a slightly higher than average semi-skilled and unskilled manual workers (grade D), with a 4% higher than the Carmarthenshire average of people classed as skilled manual workers (grade C2).

Social Profile	Llangydeyrn	%	Carmarthenshire %
<i>All people aged 16-74 in households</i>	2364	100	100
AB: Higher and intermediate managerial/professional	348	14.72	16.42
C1: Supervisory, clerical, junior managerial/professional	573	24.24	28.5
C2: Skilled manual workers	546	23.1	18.81
D: Semi-skilled and unskilled manual workers	436	18.44	17.88
E: On state benefit, unemployed, lowest grade workers	461	19.5	18.38

Source: 2001 Census, ONS

ECONOMY AND LABOUR MARKET

Benefit Claimants	Llangydeyrn	Rate %	Carmarthenshire Working Population %
Unemployment Benefit (JSA): March 2012	59	3.2	3.4
Incapacity Benefits (ESA/IB/SDA) August 2011	265	14.3	10.6
Income Support: August 2011	115	6.2	4.8
Disability Living Allowance: August 2011	335	18.1	14.6
Pension Credit: August 2011	155	8.4	9.1
State Pension Claimants: August 2011	700	37.9	38.8

Source: Jobcentre Plus administrative system Dept. for Work & Pensions

Economic Status (people aged 16-74)	Llangydeyrn	Llangydeyrn %	Carmarthenshire %
Economically Active	1,156	54.13	58.6
Employees: Part-time	218	10.21	10.75
Employees: Full-time	620	29.03	32.67
Self-employed	216	10.11	10.02
Unemployed	61	2.86	3.37
Full-time Student	41	1.92	1.78
Economically Inactive	980	45.88	41.4
Retired	338	15.82	16.12
Student	95	4.45	4.51
Looking after home/family	161	7.54	6.23
Permanently sick/disabled	323	15.12	11.07
Other	63	2.95	3.47

Source: 2001 Census, ONS

WELSH INDEX OF MULTIPLE DEPRIVATION (WIMD)

WIMD 2011 based on fine-grained geography of lower Super Output Areas (LSOAs). The WIMD 2011 is compiled from eight domains, Income, Employment, Health, Education, Housing, Access to Services, Physical Environment and Community Safety and is published at Lower Super Output Area of which there are 112 in Carmarthenshire.

Under WIMD, where Rank 1 is the most deprived, **Llangydeyrn 1** ranks as the 18th most deprived area in Carmarthenshire from 112 LSOAs and is ranked 504 in Wales from 1896 LSOAs. **Llangydeyrn 2** ranks 49 in Carmarthenshire and is ranked 813 from 1896 LSOAs in Wales.

The highest level of deprivation attributed to **Llangydeyrn 1** is the Education domain, being ranked 17th in Carmarthenshire and 473 in Wales for this domain. In **Llangydeyrn 2** the Access to Services domain is the most prominent ranking 23rd in Carmarthenshire and 146th in Wales.

Llangydeyrn 1 – Carway, Pontiets Llangydeyrn 2 – Meinciau, Crwbin

LSOA	Overall Index		Domains: Income		Employment		Health		Education		Housing		Access to Services		Physical Environment		Community Safety	
	Rank	Wales	Rank	Wales	Rank	Wales	Rank	Wales	Rank	Wales	Rank	Wales	Rank	Wales	Rank	Wales	Rank	Wales
Llangydeyrn 1	18	504	20	560	24	456	31	548	17	473	33	798	34	289	94	1437	38	1141
Llangydeyrn 2	49	813	48	858	48	782	60	910	51	957	65	1104	23	146	89	1343	79	1612

Source: Welsh Index of Multiple Deprivation 2011 (released August 2011), Welsh Assembly Government.

Note: LSOAs ranked 1-112 (Carmarthenshire), 1-1896 (Wales).

CRIME

Llangydeyrn	Offence Group											Annual Total
	Violence against the Person	Sexual Offences	Robbery	Burglary	Auto crime	General Theft	Fraud and Forgery	Criminal Damage	Drug Offences	Other		
Fiscal Year (1st April to 31st March)												
2008/2009	24	1	0	6	8	12	2	23	11	3	90	
2009/2010	18	3	0	6	10	17	0	18	7	1	80	
2010/2011	9	1	1	8	7	20	0	14	2	2	64	

Source: Dyfed Powys Police, Headquarters, Llangunor.

For further information please contact:

Lesley Rees, Policy & Research Officer

01267 224462

llrees@carmarthenshire.gov.uk