

LANFIHANGEL-AR-ARTH WARD: ELECTORAL DIVISION PROFILE

Policy Research and Information Section, Carmarthenshire County Council, May 2012

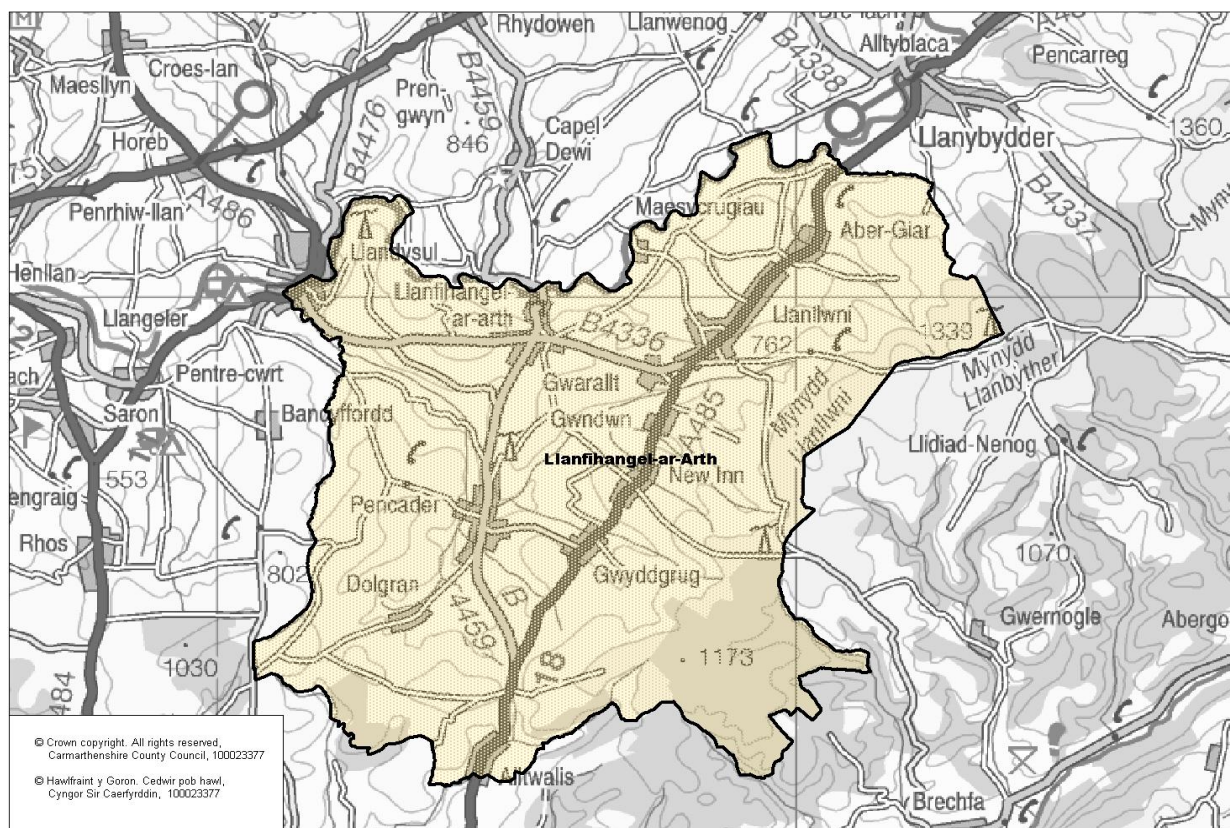
Councillors (Electoral Vote 2012): Linda Evans (Plaid Cymru). Turnout = 55.42%

Electorate (October 2011): 2225

Population: 2,820 (mid -2010 Estimate)

Welsh Assembly and UK Parliamentary Constituency: Carmarthenshire East & Dinefwr

Council owned Facilities: Alltwalis C.P. School, Ysgol Cae'r Felin, Llanllwni V.C.P. School, Llandysul Canoeing Centre, Mynydd Llanybydder Picnic Site.



Location: Approximately 22km from Carmarthen Town

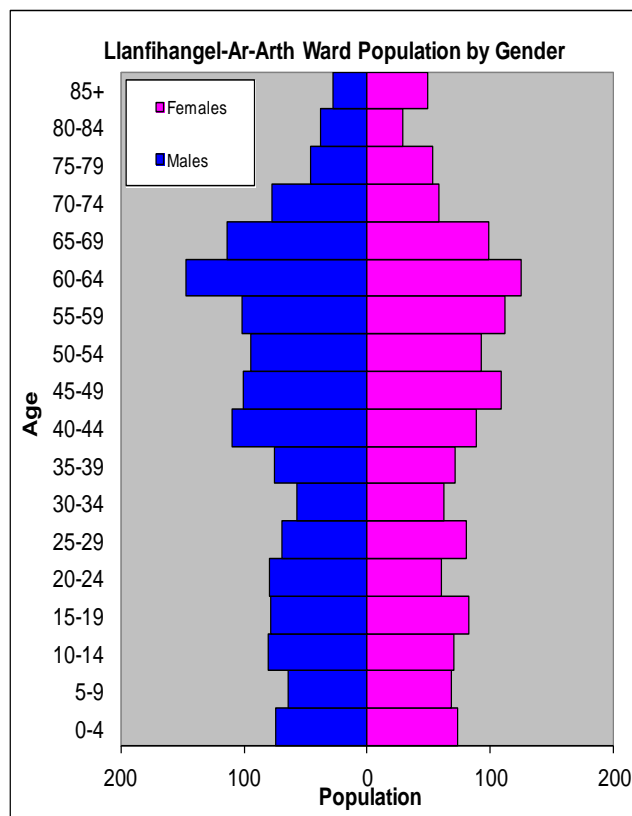
- ⇒ Regeneration Designations: Rural Development Plan 2007-2013 eligible ward
- ⇒ Area: 88.97km²
- ⇒ Population Density: 32 people per km²
- ⇒ Population Change: 2001-2010: +84 (+3%)
- ⇒ Major Employers: Carmarthenshire County Council (schools and leisure)

POPULATION STATISTICS 2010 Small Area Population Estimates

Age Structure	Llanfihangel Ar-Arth Population	Llanfihangel Ar-Arth %	Carmarthenshire %
Aged: 0-4	148	5.2	5.4
5-14	283	10.0	11.2
15-24	300	10.6	11.8
25-44	615	21.8	22.3
45-64	883	31.3	28.3
65-74	348	12.3	11.2
75+	243	8.6	11.5
Total	2,820	100	100

Births & Deaths	Llanfihangel Ar-Arth	Carmarthenshire
Birth (2010)	26	1,963
Births Rate	9.2	10.9
Deaths (2010)	36	2077
Death Rate	12.8	11.5

Source: Vital Statistics 2010, ONS.
Note: birth/death rates expressed per '000



Source: aggregated lower Super Output Area (LSOA) Small Area Population Estimates, 2010, Office for National Statistics (ONS)

- ⇒ 29th lowest ward population in Carmarthenshire, and 12th lowest population density.
- ⇒ Highest proportion of people aged over 45, proportion aged 65-74 relatively high compared to the Carmarthenshire Average.
- ⇒ Higher proportion of people with no qualifications
- ⇒ Higher proportion of Welsh Speakers than the Carmarthenshire average.

2001 Census Data

Population: Key Facts	Llanfihangel Ar-Arth	Llanfihangel Ar-Arth %	Carmarthenshire
People: born in Wales	1886	69.16	80.07
born outside UK	68	2.49	1.93
in non-white ethnic groups	22	0.81	0.94
with limiting long-term illness	605	22.18	26.27
with no qualifications (aged 16-74)	669	33.84	34.04
with higher level qualifications (aged 16-74)	304	15.38	17.24
able to speak Welsh	1750	66.44	50.07

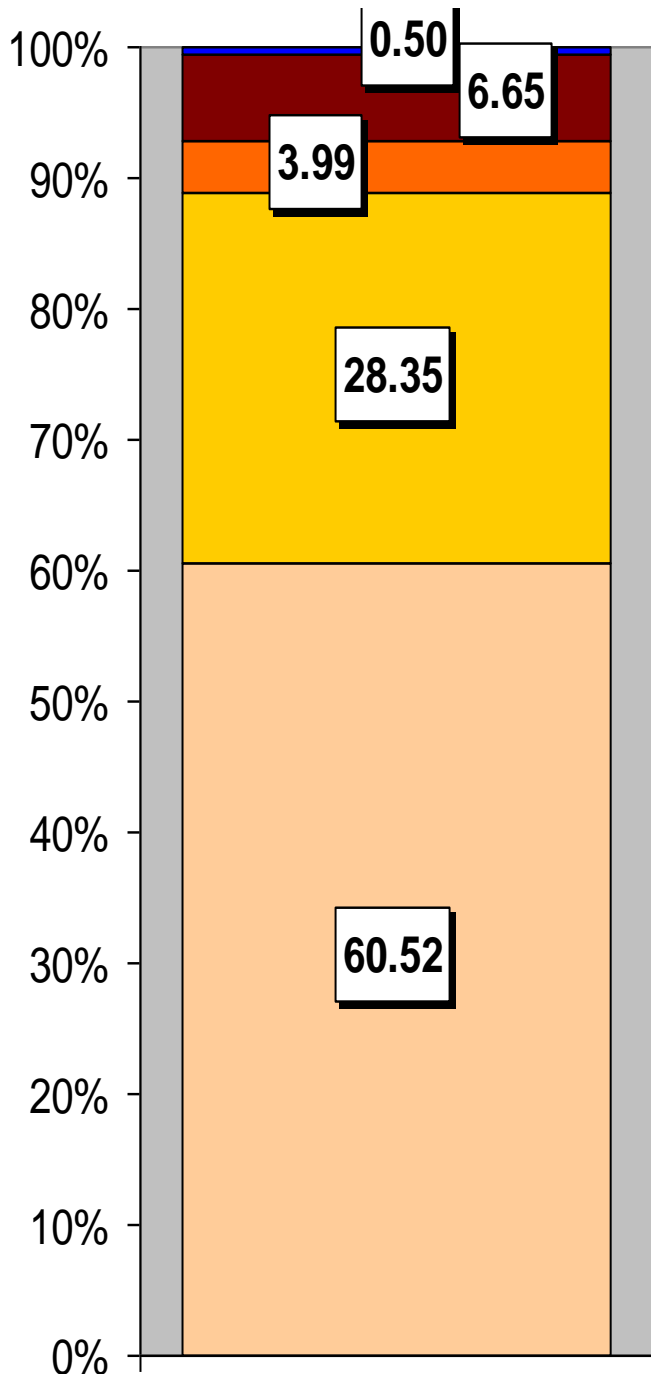
Household Composition	Llanfihangel Ar-Arth	Llanfihangel Ar-Arth %	Carmarthenshire
Total Households/ (Average Household Size)	1130	(2.4)	(2.33)
Household Type: one person: pensioner	174	15.4	17.15
one person: other	142	12.57	12.81
one family: all pensioners	110	9.73	10.38
one family: married couple	462	40.88	37.35
one family: cohabiting couple	73	6.47	6.26
one family: lone parent	100	8.85	10.29
one family: other	69	6.11	5.79

Source: 2001 Census, ONS

HOUSING

The area's housing consists mostly of detached houses, which make up around two thirds of the accommodation. There is a higher proportion of terraced accommodation than flat, maisonette and apartments. The ward consists of 212 local authority owned properties and 26 Housing Association properties.

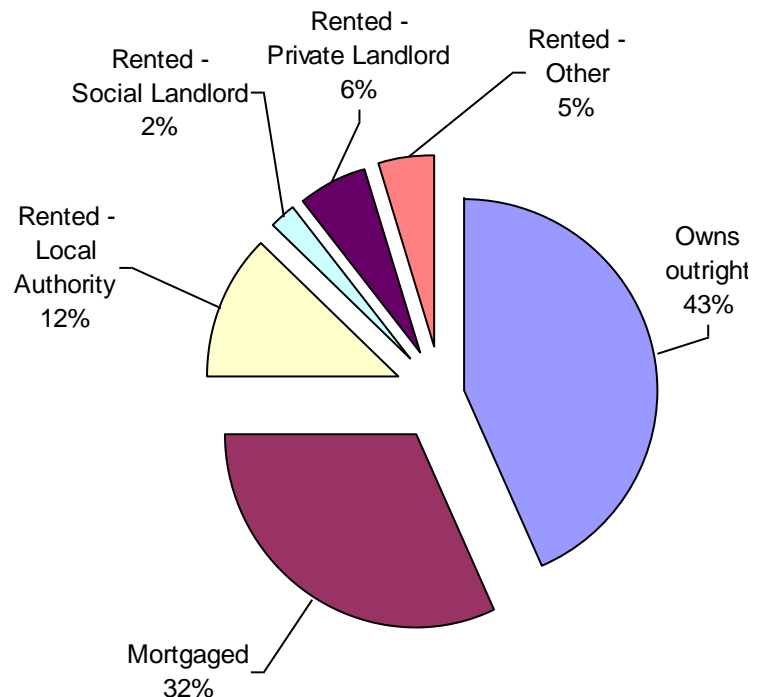
Household Accommodation Types



Household Tenure

Owns outright	43%
Mortgaged	32%
Shared Ownership	0%
Rented from Local Authority	12%
Rented from Registered Social Landlord	2%
Rented from Private Landlord	6%
Rented from other	5%

Household Tenure



Household Accommodation Types

Detached
Semi-detached
Flat, maisonette or apartment
Terraced
Caravan or other mobile temporary structure

SOCIO-ECONOMIC CHARACTERISTICS

- ⇒ The estimated median household income for Llanfihangel-Ar-Arth, based on CACI's 2011 'PayCheck' data, is £21,541 which is the 11th lowest (of 58 wards) in Carmarthenshire and 26.1% below the Carmarthenshire mean of £29,156.
- ⇒ The social profile information indicates a lower than average level of people on state benefit, unemployed or low grade workers (grade E) and a higher than average skilled manual workers (grade C2).

Social Profile	Llanfihangel		Carmarthenshire
	Ar-Arth	%	%
<i>All people aged 16-74 in households</i>	2181	100	100
AB: Higher and intermediate managerial/professional	335	15.36	16.42
C1: Supervisory, clerical, junior managerial/professional	614	28.15	28.5
C2: Skilled manual workers	528	24.21	18.81
D: Semi-skilled and unskilled manual workers	370	16.96	17.88
E: On state benefit, unemployed, lowest grade workers	334	15.31	18.38

Source: 2001 Census, ONS

ECONOMY AND LABOUR MARKET

Benefit Claimants	Llanfihangel		Carmarthenshire Working Population %
	Ar-Arth	Rate %	
Unemployment Benefit (JSA): March 2012	51	2.9	3.4
Incapacity Benefits (ESA/IB/SDA) August 2011	140	7.9	10.6
Income Support: August 2011	55	3.1	4.8
Disability Living Allowance: August 2011	200	11.3	14.6
Pension Credit: August 2011	120	6.8	9.1
State Pension Claimants: August 2011	690	39.1	38.8

Source: Jobcentre Plus administrative system Dept. for Work & Pensions

Economic Status (people aged 16-74)	Llanfihangel		Carmarthenshire
	Ar-Arth	Ar-Arth %	%
Economically Active	1,257	63.57	58.6
Employees: Part-time	174	8.8	10.75
Employees: Full-time	603	30.5	32.67
Self-employed	397	20.08	10.02
Unemployed	59	2.98	3.37
Full-time Student	24	1.21	1.78
Economically Inactive	720	36.42	41.4
Retired	284	14.37	16.12
Student	63	3.19	4.51
Looking after home/family	142	7.18	6.23
Permanently sick/disabled	174	8.8	11.07
Other	57	2.88	3.47

Source: 2001 Census, ONS

WELSH INDEX OF MULTIPLE DEPRIVATION (WIMD)

WIMD 2011 based on fine-grained geography of lower Super Output Areas (LSOAs). The WIMD 2011 is compiled from eight domains, Income, Employment, Health, Education, Housing, Access to Services, Physical Environment and Community Safety and is published at Lower Super Output Area of which there are 112 in Carmarthenshire.

Under WIMD, where Rank 1 is the most deprived, **Llanfihangel Ar Arth 1** ranks 48 out of 112 LSOAs in Carmarthenshire and is ranked 784 in Wales from 1896 LSOAs.

Llanfihangel Ar Arth 2 ranks 88 in Carmarthenshire and is ranked 1204 in Wales.

The highest level of deprivation attributed to **Llanfihangel Ar Arth 1** is the Education domain, being ranked 28th in Carmarthenshire and 632 in Wales for this domain. In **Llanfihangel Ar Arth 2** the Access to Services domain is the most prominent ranking 22nd in Carmarthenshire and 134 in Wales.

Llanfihangel Ar Arth 1 – Pencader Llanfihangel Ar Arth 2 – Llanllwni Gwyddgrug

LSOA	Overall Index		Domains: Income		Employment		Health		Education		Housing		Access to Services		Physical Environment		Community Safety	
	Rank	Wales	Rank	Wales	Rank	Wales	Rank	Wales	Rank	Wales	Rank	Wales	Rank	Wales	Rank	Wales	Rank	Wales
Llanfihangel-Ar-Arth 1	48	784	47	853	66	1022	84	1137	28	632	38	835	24	149	36	545	65	1505
Llanfihangel-Ar-Arth 2	88	1204	100	1505	92	1221	87	1162	58	1012	45	918	22	134	105	1587	102	1864

Source: Welsh Index of Multiple Deprivation 2011 (released August 2011), Welsh Assembly Government.

Note: LSOAs ranked 1-112 (Carmarthenshire), 1-1896 (Wales).

CRIME

Llanfihangel ar Arth	Offence Group										Annual Total	
	Violence against the Person	Sexual Offences	Robbery	Burglary	Auto crime	General Theft	Fraud and Forgery	Criminal Damage	Drug Offences	Other		
Fiscal Year (1st April to 31st March)												
2008/2009	10	0	0	4	5	10	2	9	19	0	59	
2009/2010	9	2	0	8	2	9	3	12	16	1	62	
2010/2011	8	1	0	9	6	8	2	19	4	0	57	

Source: Dyfed Powys Police, Headquarters, Llangunnor.

For further information please contact:

Lesley Rees, Policy & Research Officer

01267 224462

llrees@carmarthenshire.gov.uk