

## LLANDOVERY WARD: ELECTORAL DIVISION PROFILE

Policy Research and Information Section, Carmarthenshire County Council, May 2012

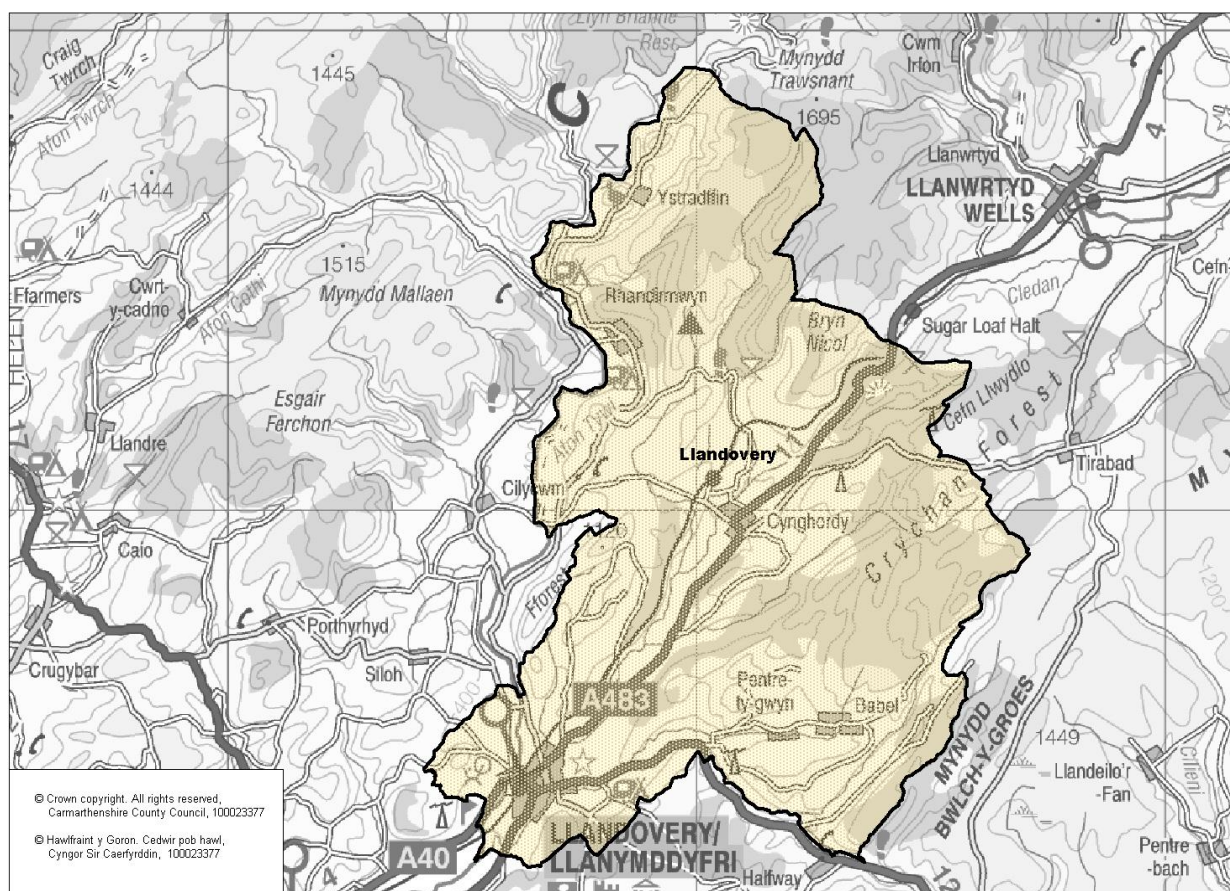
**Councillors (Electoral Vote 2012):** Ivor Jackson (Independent) – Turnout = 50.17%

**Electorate (October 2011):** 2140

**Population:** 2,801 (mid -2010 Estimate)

**Welsh Assembly and UK Parliamentary Constituency:** Carmarthenshire East & Dinefwr

**Council owned Facilities:** Llandovery Livestock Market, Llandovery Library, Ysgol Rhys Pritchard, Capel Cynfab V.C.P. School, Ysgol Gyfun Pantycelyn, Sugar Loaf Mountain Picnic Site, Castle Sports Ground, Llandovery Castle Grounds & Play Area, Green Lodge Recreation Area.



**Location: Approximately 43km from Carmarthen Town**

- ⇒ Regeneration Designations: Rural Development Plan 2007-2013 eligible ward
- ⇒ Area: 115.80km<sup>2</sup>
- ⇒ Population Density: 24 people per km<sup>2</sup>
- ⇒ Population Change: 2001-2010: -67 (-2.4%)
- ⇒ Major Employers: Carmarthenshire County Council (schools and leisure)

## POPULATION STATISTICS

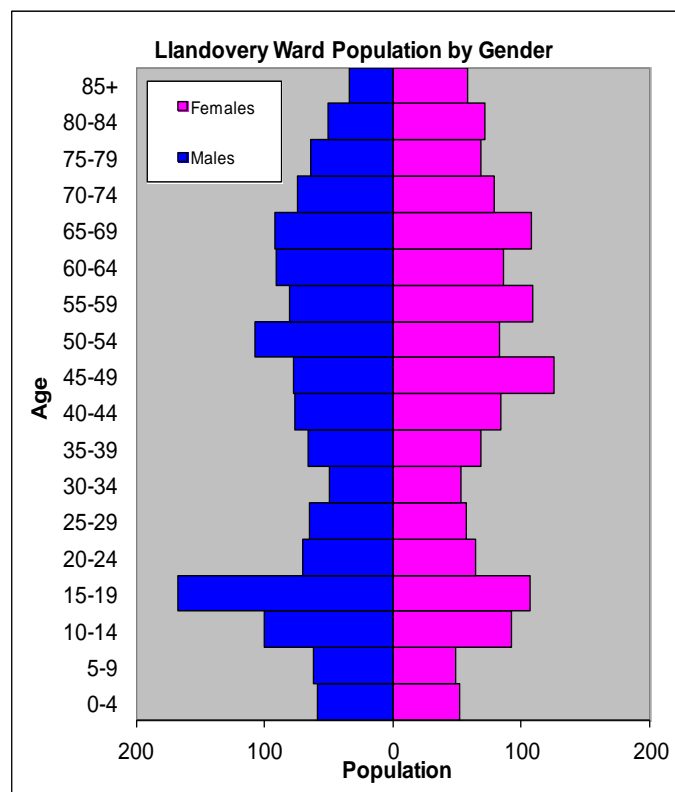
### 2010 Small Area Population Estimates

Age Structure	Llandoverly Population	Llandoverly %	Carmarthenshire %
Aged: 0-4	111	4.0	5.4
5-14	303	10.8	11.2
15-24	409	14.6	11.8
25-44	518	18.5	22.3
45-64	760	27.1	28.3
65-74	353	12.6	11.2
75+	347	12.4	11.5
<b>Total</b>	<b>2,801</b>	<b>100</b>	<b>100</b>

Births & Deaths	Llandoverly	Carmarthenshire
Birth (2010)	29	1,963
Births Rate	10.4	10.9
Deaths (2010)	37	2077
Death Rate	13.2	11.5

Source: Vital Statistics 2010, ONS.

Note: birth/death rates expressed per '000



Source: aggregated lower Super Output Area (LSOA) Small Area Population Estimates, 2010, Office for National Statistics (ONS)

- ⇒ 27<sup>th</sup> lowest ward population in Carmarthenshire, and 8<sup>th</sup> lowest population density.
- ⇒ Highest proportion of people aged over 45, proportion aged over 65 higher than the Carmarthenshire Average.
- ⇒ Higher proportion of people with no qualifications
- ⇒ High proportion of Welsh Speakers

## 2001 Census Data

Population: Key Facts	Llandoverly	Llandoverly %	Carmarthenshire
<b>People:</b> born in Wales	1954	68.08	80.07
born outside UK	109	3.8	1.93
in non-white ethnic groups	30	1.04	0.94
with limiting long-term illness	687	23.93	26.27
with no qualifications (aged 16-74)	743	37.08	34.04
with higher level qualifications (aged 16-74)	345	17.22	17.24
able to speak Welsh	1318	47.03	50.07

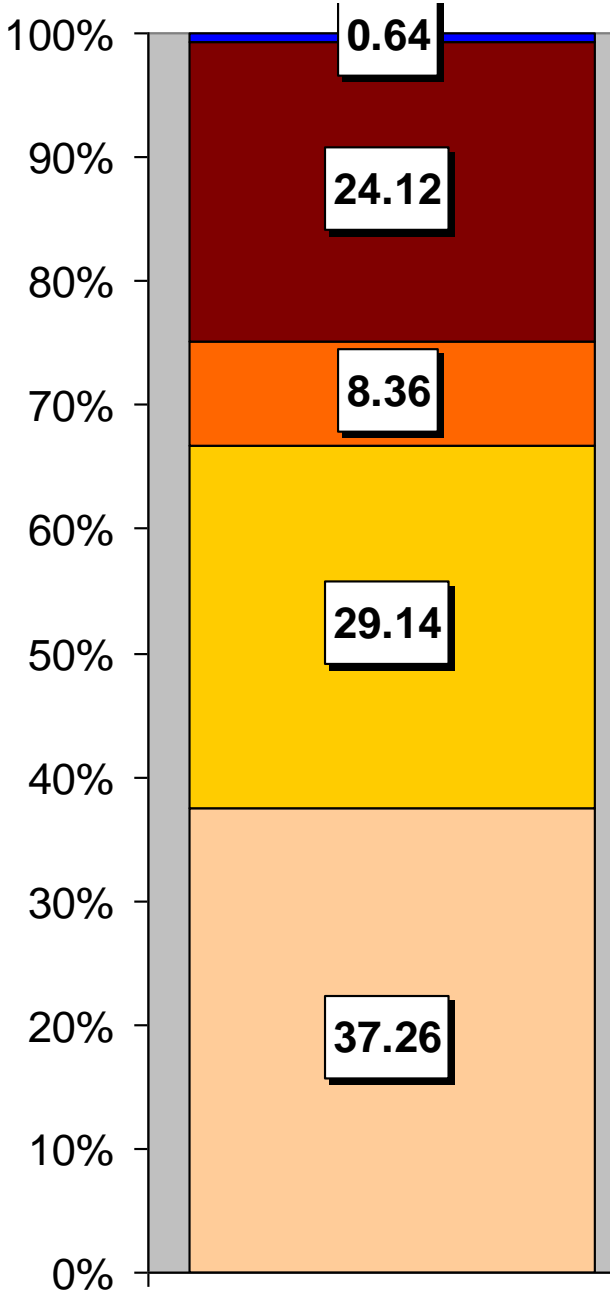
Household Composition	Llandoverly	Llandoverly %	Carmarthenshire
<b>Total Households/</b> (Average Household Size)	1173	(2.23)	(2.33)
Household Type: one person: pensioner	236	20.12	17.15
one person: other	154	13.13	12.81
one family: all pensioners	131	11.17	10.38
one family: married couple	416	35.46	37.35
one family: cohabiting couple	57	4.87	6.26
one family: lone parent	128	10.91	10.29
one family: other	51	4.35	5.79

Source: 2001 Census, ONS

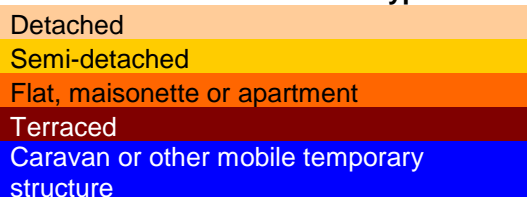
## HOUSING

The area's housing consists mostly of detached houses and a higher proportion of semi-detached accommodation in comparison to the proportion of terraced housing. The ward consists of 163 local authority owned properties and 67 Housing Association properties.

### Household Accommodation Types



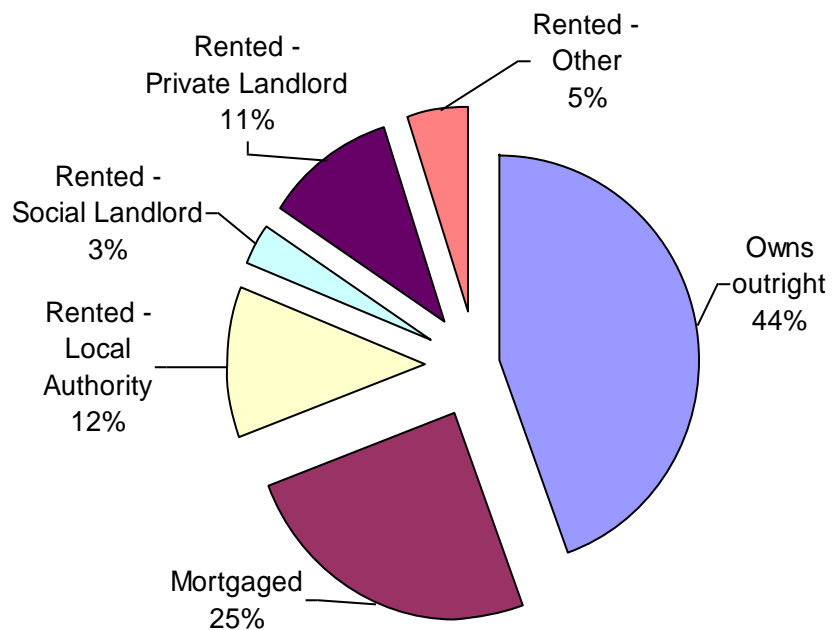
#### Household Accommodation Types



### Household Tenure

Owns outright	44%
Mortgaged	25%
Shared Ownership	0%
Rented from Local Authority	12%
Rented from Registered Social Landlord	3%
Rented from Private Landlord	11%
Rented from other	5%

### Household Tenure



## SOCIO-ECONOMIC CHARACTERISTICS

- ⇒ The estimated median household income for Llandoverly, based on CACI's 2011 'PayCheck' data, is £19,570 which is the 4<sup>th</sup> lowest (of 58 wards) in Carmarthenshire and 32.9% below the Carmarthenshire mean of £29,156.
- ⇒ The social profile information indicates a slightly higher than average level of people on state benefit, unemployed or low grade workers (grade E) and a lower than average semi-skilled and unskilled manual workers (grade D).

Social Profile	Llandoverly	%	Carmarthenshire %
<i>All people aged 16-74 in households</i>	2134	100	100
<b>AB:</b> Higher and intermediate managerial/professional	324	15.18	16.42
<b>C1:</b> Supervisory, clerical, junior managerial/professional	606	28.4	28.5
<b>C2:</b> Skilled manual workers	449	21.04	18.81
<b>D:</b> Semi-skilled and unskilled manual workers	341	15.98	17.88
<b>E:</b> On state benefit, unemployed, lowest grade workers	414	19.4	18.38

Source: 2001 Census, ONS

## ECONOMY AND LABOUR MARKET

Benefit Claimants	Llandoverly	Rate %	Carmarthenshire Working Population %
Unemployment Benefit (JSA): March 2012	32	2.0	3.4
Incapacity Benefits (ESA/IB/SDA) August 2011	120	7.3	10.6
Income Support: August 2011	55	3.4	4.8
Disability Living Allowance: August 2011	160	9.8	14.6
Pension Credit: August 2011	185	11.3	9.1
State Pension Claimants: August 2011	770	46.9	38.8

Source: Jobcentre Plus administrative system Dept. for Work & Pensions

Economic Status (people aged 16-74)	Llandoverly	Llandoverly %	Carmarthenshire %
<b>Economically Active</b>	1,172	58.48	58.6
Employees: Part-time	199	9.93	10.75
Employees: Full-time	567	28.29	32.67
Self-employed	303	15.12	10.02
Unemployed	66	3.29	3.37
Full-time Student	37	1.85	1.78
<b>Economically Inactive</b>	832	41.52	41.4
Retired	349	17.42	16.12
Student	174	8.68	4.51
Looking after home/family	112	5.59	6.23
Permanently sick/disabled	136	6.79	11.07
Other	61	3.04	3.47

## WELSH INDEX OF MULTIPLE DEPRIVATION (WIMD)

WIMD 2011 based on fine-grained geography of lower Super Output Areas (LSOAs). The WIMD 2011 is compiled from eight domains, Income, Employment, Health, Education, Housing, Access to Services, Physical Environment and Community Safety and is published at Lower Super Output Area of which there are 112 in Carmarthenshire.

Under WIMD, where Rank 1 is the most deprived, **Llandovery 1** ranks 52 out of 112 LSOAs in Carmarthenshire and is ranked 849 in Wales from 1896 LSOAs. **Llandovery 2** is ranked 99 in Carmarthenshire and 1391 from 1896 LSOAs in Wales.

The highest level of deprivation attributed to **Llandovery 1** is the Access to Services domain, being ranked 11<sup>th</sup> in Carmarthenshire and 77<sup>th</sup> in Wales for this domain. In **Llandovery 2** the Physical Environment domain is the most prominent ranking 22<sup>nd</sup> in Carmarthenshire and 332 in Wales.

**Llandovery 1 – Cyngordy.**

**Llandovery 2- Llandovery College**

LSOA	Overall Index		Domains: Income		Employment		Health		Education		Housing		Access to Services		Physical Environment		Community Safety	
	Rank	Wales Rank	Rank	Wales Rank	Rank	Wales Rank	Rank	Wales Rank	Rank	Wales Rank	Rank	Wales Rank	Rank	Wales Rank	Rank	Wales Rank	Rank	Wales Rank
Llandovery 1	52	849	54	961	78	1111	57	879	60	1047	64	1101	11	77	39	606	85	1698
Llandovery 2	99	1391	78	1192	103	1447	74	1019	70	1135	31	776	99	1521	22	332	58	1396

Source: Welsh Index of Multiple Deprivation 2011 (released August 2011), Welsh Assembly Government.

Note: LSOAs ranked 1-112 (Carmarthenshire), 1-1896 (Wales).

## CRIME

Llandovery	Offence Group										Annual Total	
	Violence against the Person	Sexual Offences	Robbery	Burglary	Auto crime	General Theft	Fraud and Forgery	Criminal Damage	Drug Offences	Other		
<b>Fiscal Year (1st April to 31st March)</b>												
<b>2008/2009</b>	16	2	0	15	6	15	3	39	13	1	110	
<b>2009/2010</b>	12	0	0	11	5	12	2	19	12	1	74	
<b>2010/2011</b>	24	1	0	21	5	16	0	10	9	3	89	

Source: Dyfed Powys Police, Headquarters, Llangunnor.

**For further information please contact:**

Lesley Rees, Policy & Research Officer

01267 224462

llrees@carmarthenshire.gov.uk