

## LLANBOIDY WARD: ELECTORAL DIVISION PROFILE

Policy Research and Information Section, Carmarthenshire County Council, May 2012

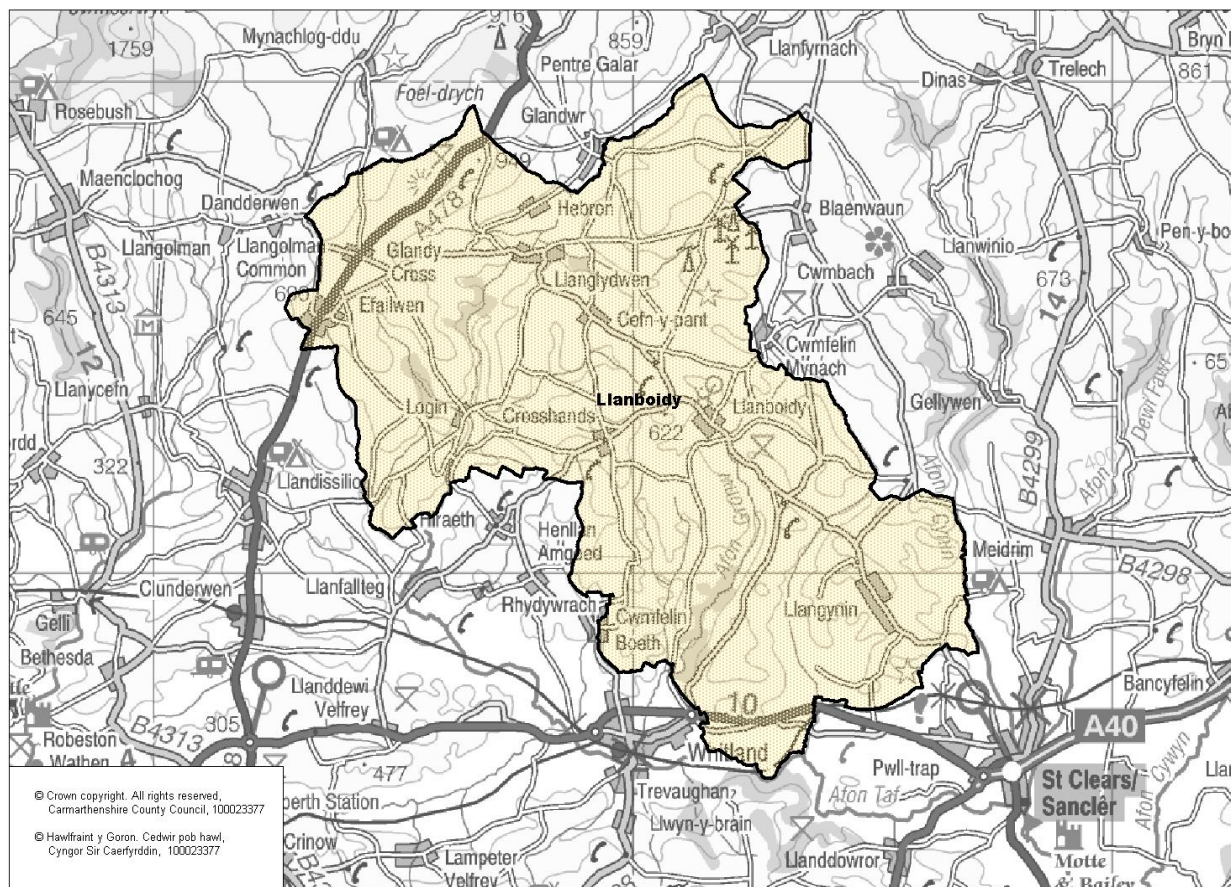
**Councillors (Electoral Vote 2012):** Roy Llewellyn (Plaid Cymru) - Turnout = 51.7%

**Electorate (October 2011):** 1738

**Population:** 2,120 (mid -2010 Estimate)

**Welsh Assembly and UK Parliamentary Constituency:** Carmarthenshire West & Pembrokeshire

**Council owned Facilities:** Ysgol Beca C.P. School, Ysgol Bro Brynach C.P. School, Ynys Fach Picnic Site, Llanboidy Radio Station, Whitland Abbey.



**Location: Approximately 28km from Carmarthen Town**

- ⇒ Regeneration Designations: Rural Development Plan 2007-2013 eligible ward
- ⇒ Area: 101.50km<sup>2</sup>
- ⇒ Population Density: 21 people per km<sup>2</sup>
- ⇒ Population Change: 2001-2010: +131 (+6.2%)
- ⇒ Major Employers: Carmarthenshire County Council (schools and leisure)

## POPULATION STATISTICS

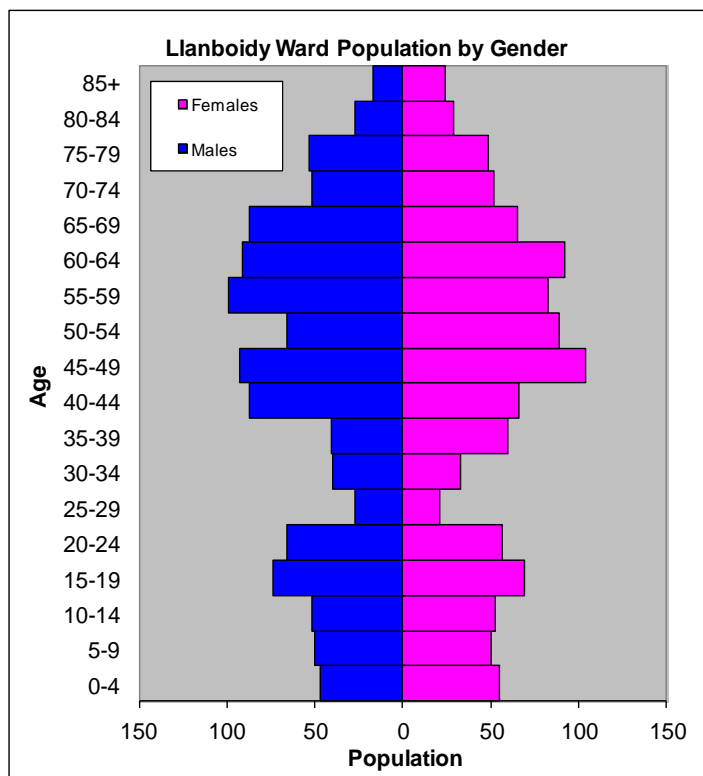
### 2010 Small Area Population Estimates

Age Structure	Llanboidy Population	Llanboidy %	Carmarthenshire %
Aged: 0-4	102	4.8	5.4
5-14	205	9.7	11.2
15-24	266	12.5	11.8
25-44	375	17.7	22.3
45-64	717	33.8	28.3
65-74	256	12.1	11.2
75+	199	9.4	11.5
<b>Total</b>	<b>2,120</b>	<b>100</b>	<b>100</b>

Births & Deaths	Llanboidy	Carmarthenshire
Birth (2010)	11	1,963
Births Rate	5.2	10.9
Deaths (2010)	14	2077
Death Rate	6.6	11.5

Source: Vital Statistics 2010, ONS.

Note: birth/death rates expressed per '000 population.



Source: aggregated lower Super Output Area (LSOA) Small Area Population Estimates, 2010, Office for National Statistics (ONS)

- ⇒ 12<sup>th</sup> lowest ward population in Carmarthenshire, and 6<sup>th</sup> lowest population density.
- ⇒ Highest proportion of people aged over 45, proportion aged 65-74 slightly higher than the Carmarthenshire average.
- ⇒ Higher proportion of people with no qualifications
- ⇒ High proportion of Welsh Speakers

## 2001 Census Data

Population: Key Facts	Llanboidy	Llanboidy %	Carmarthenshire
<b>People:</b> born in Wales	1268	63.98	80.07
born outside UK	29	1.46	1.93
in non-white ethnic groups	12	0.6	0.94
with limiting long-term illness	362	18.26	26.27
with no qualifications (aged 16-74)	461	31.55	34.04
with higher level qualifications (aged 16-74)	278	19.03	17.24
able to speak Welsh	1050	54.43	50.07

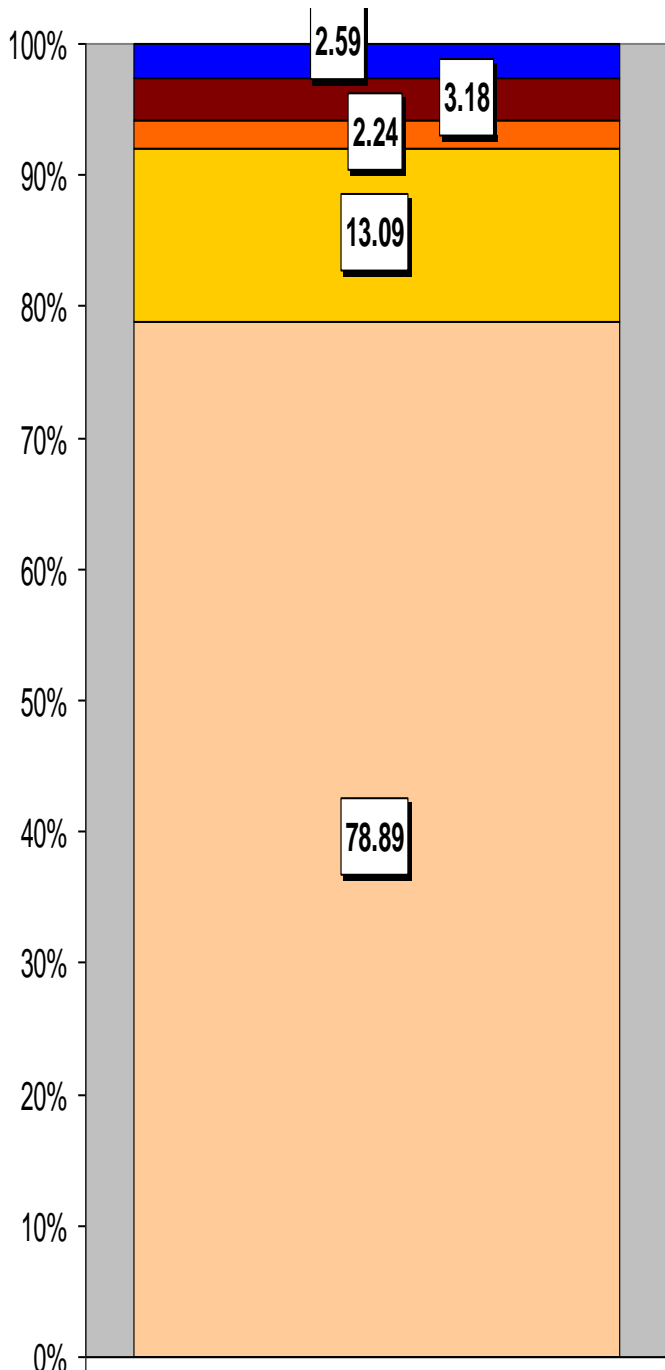
Household Composition	Llanboidy	Llanboidy %	Carmarthenshire
<b>Total Households/</b> (Average Household Size)	794	(2.48)	(2.33)
Household Type: one person: pensioner	95	11.96	17.15
one person: other	102	12.85	12.81
one family: all pensioners	73	9.19	10.38
one family: married couple	351	44.21	37.35
one family: cohabiting couple	45	5.67	6.26
one family: lone parent	67	8.44	10.29
one family: other	61	7.69	5.79

Source: 2001 Census, ONS

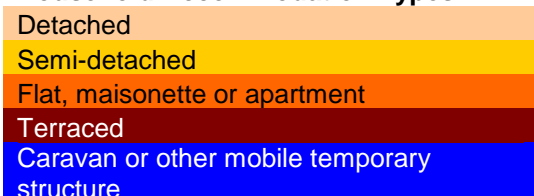
## HOUSING

The area's housing consists majority of detached houses, making up almost 79% of the housing in Llanboidy. There is a larger proportion of caravan or other mobile temporary structures than flats, maisonettes and apartments. The ward consists of 19 local authority owned properties and no Housing Association properties.

### Household Accommodation Types



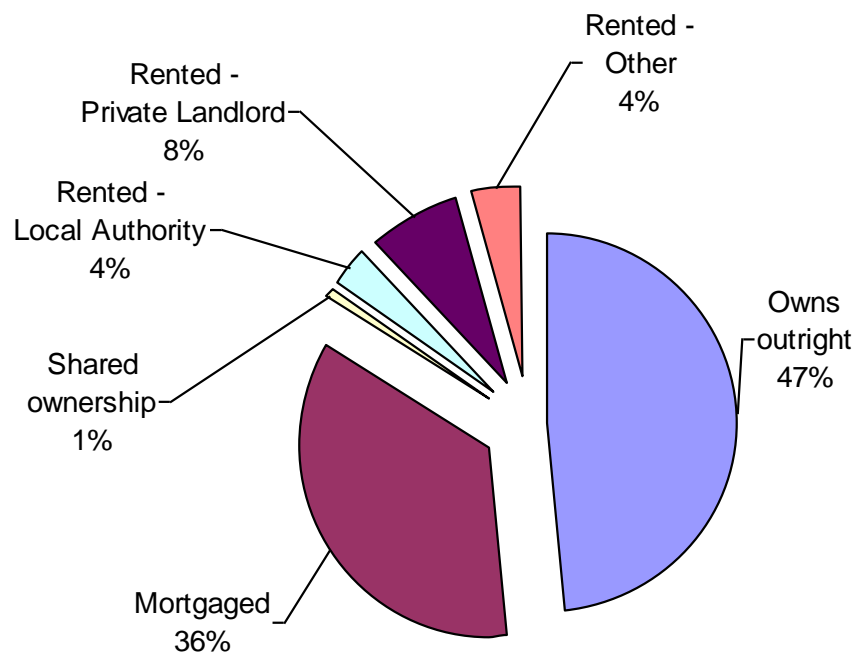
### Household Accommodation Types



### Household Tenure

Owns outright	47%
Mortgaged	36%
Shared Ownership	1%
Rented from Local Authority	4%
Rented from Registered Social Landlord	0%
Rented from Private Landlord	8%
Rented from other	4%

### Household Tenure



## SOCIO-ECONOMIC CHARACTERISTICS

- ⇒ The estimated median household income for Llanboidy, based on CACI's 2011 'PayCheck' data, is £25,460 which is the 18<sup>th</sup> highest (of 58 wards) in Carmarthenshire and 12.7% below the Carmarthenshire mean of £29,156.
- ⇒ The social profile information indicates a lower than average level of people on state benefit, unemployed or low grade workers (grade E) and semi-skilled and unskilled manual workers (grade D) but a higher than average proportion classed as skilled manual workers (grade C2).

Social Profile	Llanboidy	%	Carmarthenshire %
<i>All people aged 16-74 in households</i>	1584	100	100
<b>AB:</b> Higher and intermediate managerial/professional	267	16.86	16.42
<b>C1:</b> Supervisory, clerical, junior managerial/professional	434	27.4	28.5
<b>C2:</b> Skilled manual workers	495	31.25	18.81
<b>D:</b> Semi-skilled and unskilled manual workers	179	11.3	17.88
<b>E:</b> On state benefit, unemployed, lowest grade workers	209	13.19	18.38

Source: 2001 Census, ONS

## ECONOMY AND LABOUR MARKET

Benefit Claimants	Llanboidy	Rate %	Carmarthenshire Working Population %
Unemployment Benefit (JSA): March 2012	22	1.7	3.4
Incapacity Benefits (ESA/IB/SDA) August 2011	85	6.4	10.6
Income Support: August 2011	45	3.4	4.8
Disability Living Allowance: August 2011	125	9.4	14.6
Pension Credit: August 2011	90	6.8	9.1
State Pension Claimants: August 2011	540	40.8	38.8

Source: Jobcentre Plus administrative system Dept. for Work & Pensions

Economic Status (people aged 16-74)	Llanboidy	Llanboidy %	Carmarthenshire %
<b>Economically Active</b>	969	66.32	58.6
Employees: Part-time	147	10.06	10.75
Employees: Full-time	359	24.57	32.67
Self-employed	394	26.97	10.02
Unemployed	51	3.49	3.37
Full-time Student	18	1.23	1.78
<b>Economically Inactive</b>	492	33.67	41.4
Retired	200	13.69	16.12
Student	64	4.38	4.51
Looking after home/family	81	4.38	6.23
Permanently sick/disabled	114	5.54	11.07
Other	33	7.8	3.47

Source: 2001 Census, ONS

## WELSH INDEX OF MULTIPLE DEPRIVATION (WIMD)

WIMD 2011 based on fine-grained geography of lower Super Output Areas (LSOAs). The WIMD 2011 is compiled from eight domains, Income, Employment, Health, Education, Housing, Access to Services, Physical Environment and Community Safety and is published at Lower Super Output Area of which there are 112 in Carmarthenshire. Under WIMD, where Rank 1 is the most deprived, **Llanboidy** ranks 65 most deprived in Carmarthenshire from 112 LSOAs and is ranked 997 in Wales from 1896 LSOAs.

The highest level of deprivation attributed to **Llanboidy** is the Access to Services domain, being ranked 2<sup>th</sup> in Carmarthenshire and 6<sup>th</sup> in Wales for this domain.

LSOA	Overall Index		Domains: Income		Employment		Health		Education		Housing		Access to Services		Physical Environment		Community Safety	
	65	997	70	1120	98	1447	104	1543	95	1398	23	671	2	6	104	1581	104	1872
Llanboidy	65	997	70	1120	98	1447	104	1543	95	1398	23	671	2	6	104	1581	104	1872

Source: Welsh Index of Multiple Deprivation 2011 (released August 2011), Welsh Assembly Government.

Note: LSOAs ranked 1-112 (Carmarthenshire), 1-1896 (Wales).

## CRIME

Fiscal Year (1st April to 31st March)	Offence Group											Annual Total
	Violence against the Person	Sexual Offences	Robbery	Burglary	Auto crime	General Theft	Fraud and Forgery	Criminal Damage	Drug Offences	Other		
<b>2008/2009</b>	3	0	0	4	3	5	0	0	0	0	0	15
<b>2009/2010</b>	4	0	0	1	0	6	1	5	1	0	0	18
<b>2010/2011</b>	1	0	0	3	3	9	1	1	3	1	0	22

Source: Dyfed Powys Police, Headquarters, Llanguonnor.

**For further information please contact:**

Lesley Rees, Policy & Research Officer

01267 224462

llrees@carmarthenshire.gov.uk