

CYNWYL ELFED WARD: ELECTORAL DIVISION PROFILE

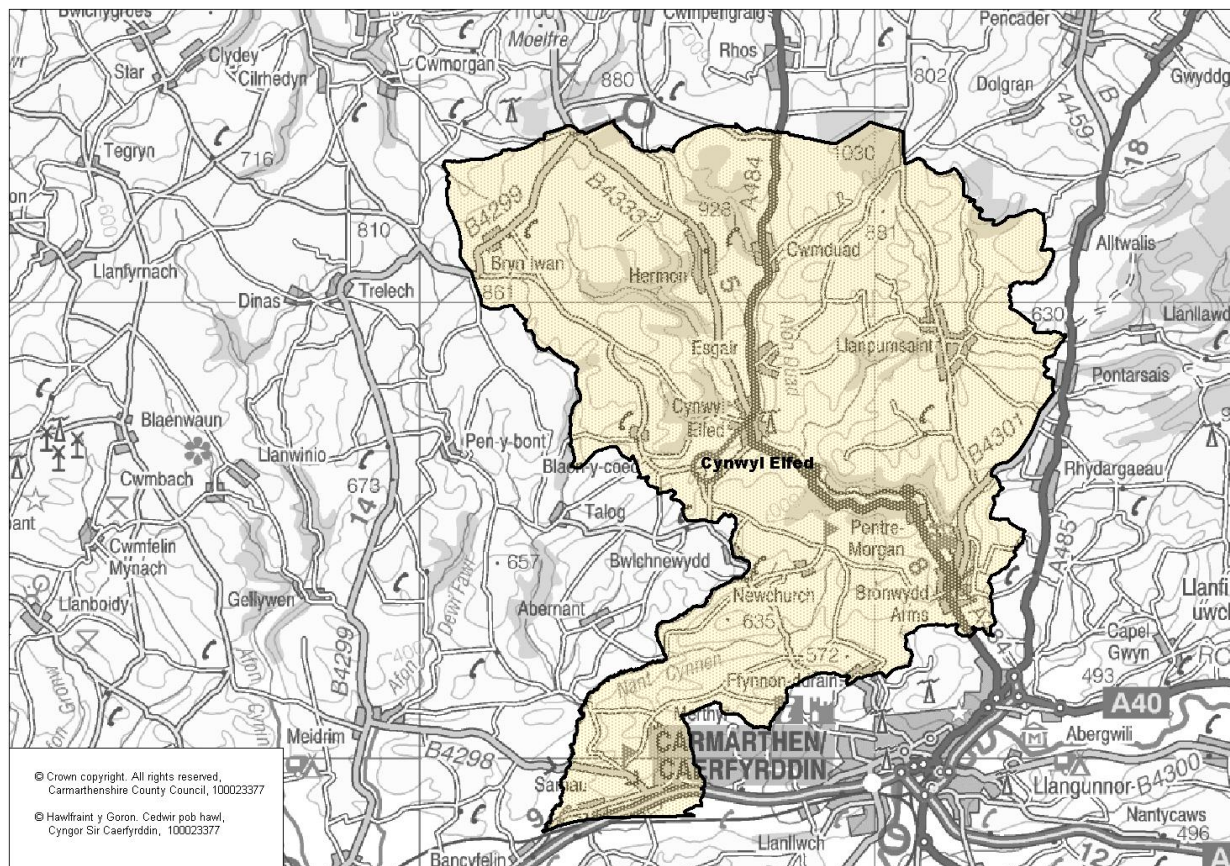
Policy Research and Information Section, Carmarthenshire County Council, May 2012

Councillors (Electoral Vote 2012): Henry Irfon Jones (Independent). Turnout = 58.98%,
Electorate (October 2011): 2494

Population: 2,816 (mid -2010 Estimate)

Welsh Assembly and UK Parliamentary Constituency: Carmarthenshire West & Pembrokeshire

Council owned Facilities: Llanpumsaint C.P. School and Cynwyl Elfed C.P. School



Location: Approximately 12km from Carmarthen Town

- ⇒ Regeneration Designations: Rural Development Plan 2007-2013 eligible ward
- ⇒ Area: 119.10km²
- ⇒ Population Density: 24 people per km²
- ⇒ Population Change: 2001-2010: +74 (+2.6%)
- ⇒ Major Employers: Carmarthenshire County Council (schools and leisure)

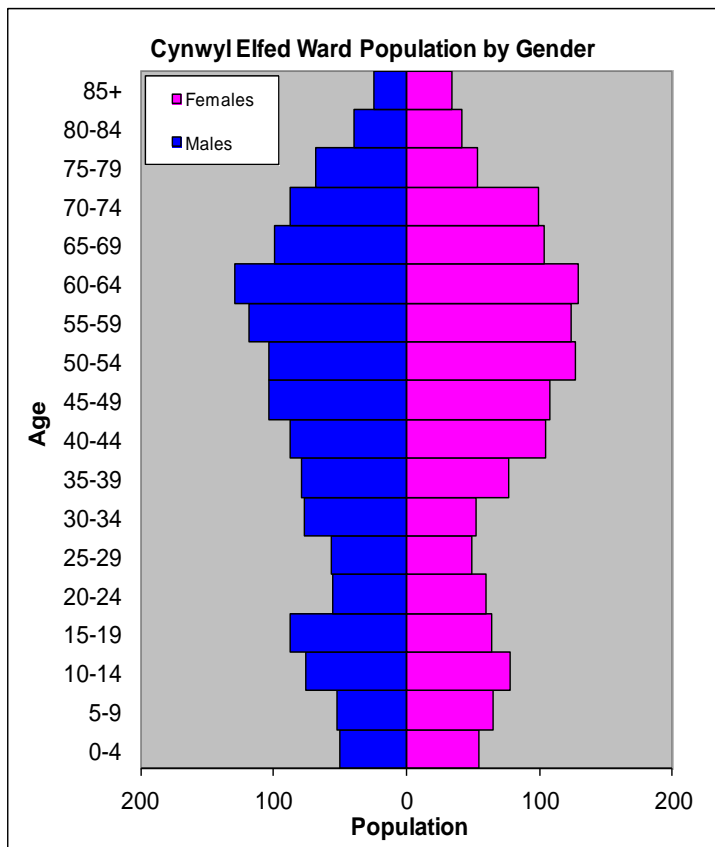
POPULATION STATISTICS 2010 Small Area Population Estimates

Age Structure	Cynwyl Elfed Population	Cynwyl Elfed %	Carmarthenshire %
Aged: 0-4	104	3.7	5.4
5-14	271	9.6	11.2
15-24	266	9.4	11.8
25-44	582	20.7	22.3
45-64	942	33.5	28.3
65-74	390	13.8	11.2
75+	261	9.3	11.5
Total	2,816	100	100

Births & Deaths	Cynwyl Elfed	Carmarthenshire
Birth (2010)	29	1,963
Births Rate	10.3	10.9
Deaths (2010)	33	2077
Death Rate	11.7	11.5

Source: Vital Statistics 2010, ONS.

Note: birth/death rates expressed per '000 population.



Source: aggregated lower Super Output Area (LSOA) Small Area Population Estimates, 2010, Office for National Statistics (ONS)

- ⇒ 28th lowest ward population in Carmarthenshire, and 7th lowest population density.
- ⇒ Highest proportion of people aged over 45, proportion aged 65-74 is 2.6% higher than the Carmarthenshire average.
- ⇒ Higher proportion of people with no qualifications
- ⇒ Higher proportion of Welsh Speakers than the Carmarthenshire average.

2001 Census Data

Population: Key Facts	Cynwyl Elfed	Cynwyl Elfed %	Carmarthenshire
People: born in Wales	1848	67.37	80.07
born outside UK	47	1.71	1.93
in non-white ethnic groups	14	0.52	0.94
with limiting long-term illness	551	20.08	26.27
with no qualifications (aged 16-74)	623	30.63	34.04
with higher level qualifications (aged 16-74)	443	21.78	17.24
able to speak Welsh	1549	57.91	50.07

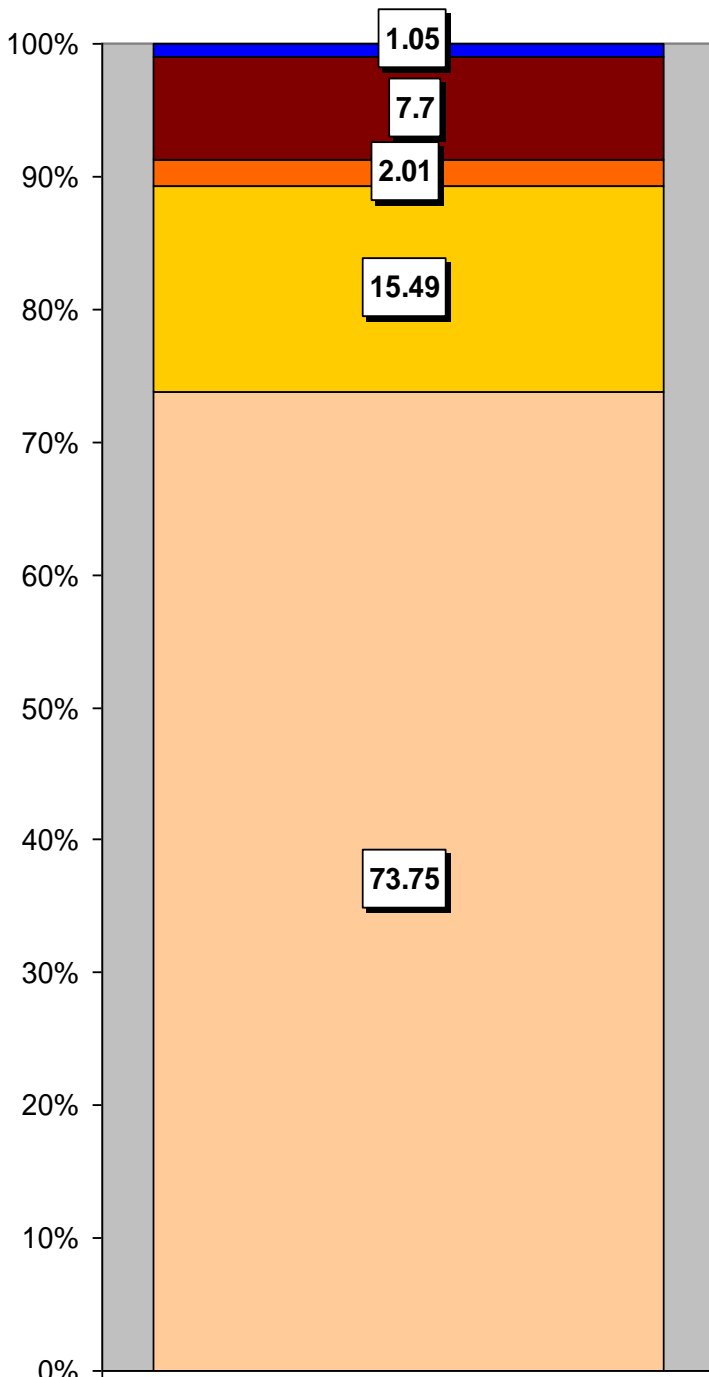
Household Composition	Cynwyl Elfed	Cynwyl Elfed %	Carmarthenshire
Total Households/ (Average Household Size)	1097	(2.48)	(2.33)
Household Type: one person: pensioner	145	13.22	17.15
one person: other	107	9.75	12.81
one family: all pensioners	126	11.49	10.38
one family: married couple	516	47.04	37.35
one family: cohabiting couple	48	4.38	6.26
one family: lone parent	72	6.56	10.29
one family: other	83	7.57	5.79

Source: 2001 Census, ONS

HOUSING

The area's housing consists majorly of detached housing, which makes up almost three quarters of the housing stock. The second largest proportion is the semi-detached accommodation which makes up 15% of the housing. The ward consists of 61 local authority owned properties and no Housing Association properties.

Household Accommodation Types



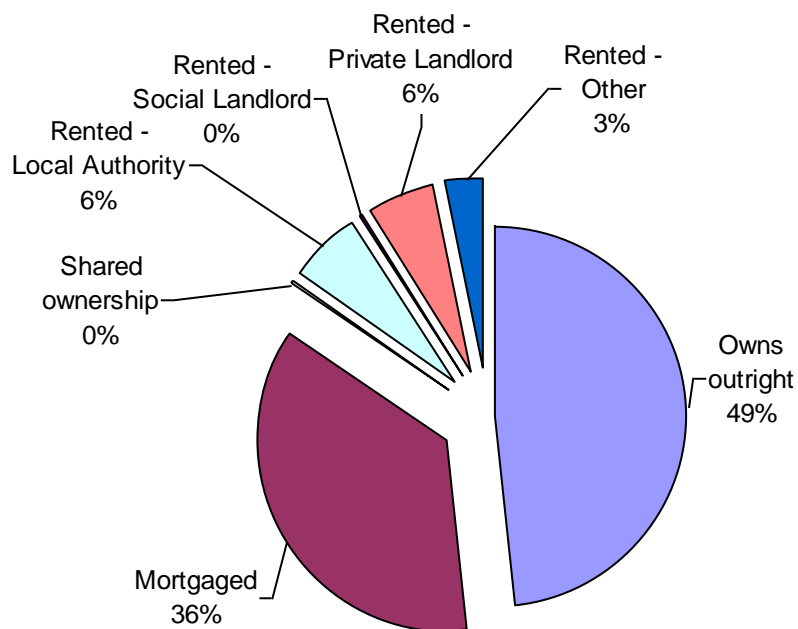
Household Accommodation Types



Household Tenure

Owns outright	49%
Mortgaged	36%
Shared Ownership	0%
Rented from Local Authority	6%
Rented from Registered Social Landlord	0%
Rented from Private Landlord	6%
Rented from other	3%

Household Tenure



SOCIO-ECONOMIC CHARACTERISTICS

- ⇒ The estimated median household income for Cynwyl Elfed, based on CACI's 2011 'PayCheck' data, is £29,219 which is the 5th highest (of 58 wards) in Carmarthenshire and 0.2% below the Carmarthenshire mean of £29,156.
- ⇒ The social profile information indicates a lower than average level of people on state benefit, unemployment or low grade workers (grade E) and a higher than average workers in higher and intermediate managerial/professional employment (grade AB).

Social Profile	Cynwyl Elfed	%	Carmarthenshire %
<i>All people aged 16-74 in households</i>	2253	100	100
AB: Higher and intermediate managerial/professional	469	20.82	16.42
C1: Supervisory, clerical, junior managerial/professional	658	29.21	28.5
C2: Skilled manual workers	546	24.23	18.81
D: Semi-skilled and unskilled manual workers	282	12.52	17.88
E: On state benefit, unemployed, lowest grade workers	298	13.23	18.38

Source: 2001 Census, ONS

ECONOMY AND LABOUR MARKET

Benefit Claimants	Cynwyl Elfed	Rate %	Carmarthenshire Working Population %
Unemployment Benefit (JSA): March 2012	23	1.3	3.4
Incapacity Benefits (ESA/IB/SDA) August 2011	115	6.6	10.6
Income Support: August 2011	30	1.7	4.8
Disability Living Allowance: August 2011	155	8.9	14.6
Pension Credit: August 2011	120	6.9	9.1
State Pension Claimants: August 2011	790	45.1	38.8

Source: Jobcentre Plus administrative system Dept. for Work & Pensions

Economic Status (people aged 16-74)	Cynwyl Elfed	Cynwyl Elfed %	Carmarthenshire %
Economically Active	1,337	65.72	58.6
Employees: Part-time	210	10.32	10.75
Employees: Full-time	655	32.2	32.67
Self-employed	402	19.76	10.02
Unemployed	35	1.72	3.37
Full-time Student	35	1.72	1.78
Economically Inactive	697	34.26	41.4
Retired	311	15.29	16.12
Student	81	3.95	4.51
Looking after home/family	104	5.11	6.23
Permanently sick/disabled	135	6.64	11.07
Other	66	3.24	3.47

Source: 2001 Census, ONS

WELSH INDEX OF MULTIPLE DEPRIVATION (WIMD)

WIMD 2011 based on fine-grained geography of lower Super Output Areas (LSOAs). The WIMD 2011 is compiled from eight domains, Income, Employment, Health, Education, Housing, Access to Services, Physical Environment and Community Safety and is published at Lower Super Output Area of which there are 112 in Carmarthenshire.

Under WIMD, where Rank 1 is the most deprived, **Cynwyl Elfed 1** ranks 73 out of 112 LSOAs in Carmarthenshire and is ranked 1039 in Wales from 1896 LSOAs. **Cynwyl Elfed 2** emerges ranks 108 in Carmarthenshire and 1491 from 1896 in Wales.

The highest level of deprivation attributed to **Cynwyl Elfed 1** is the Access to Services domain, being ranked 3rd in Carmarthenshire and 16th in Wales for this domain. In **Cynwyl Elfed 2** Access to Services is also the most prominent domain, ranking 16th in Carmarthenshire and 103rd in Wales.

Cynwyl Elfed 1 – Llanpumsaint Cynwyl Elfed 2 - Bronwydd

LSOA	Overall Index		Domains: Income		Employment		Health		Education		Housing		Access to Services		Physical Environment		Community Safety	
	Rank	Wales Rank	Rank	Wales Rank	Rank	Wales Rank	Rank	Wales Rank	Rank	Wales Rank	Rank	Wales Rank	Rank	Wales Rank	Rank	Wales Rank	Rank	Wales Rank
Cynwyl Elfed 1	73	1039	92	1380	100	1447	97	1380	84	1281	37	829	3	16	55	820	106	1878
Cynwyl Elfed 2	108	1491	110	1719	108	1447	107	1616	105	1663	87	1374	16	103	71	1122	93	1791

Source: Welsh Index of Multiple Deprivation 2011 (released August 2011), Welsh Assembly Government.

Note: LSOAs ranked 1-112 (Carmarthenshire), 1-1896 (Wales).

CRIME

Cynwyl Elfed	Offence Group											Annual Total
	Violence against the Person	Sexual Offences	Robbery	Burglary	Autocrime	General Theft	Fraud and Forgery	Criminal Damage	Drug Offences	Other		
Fiscal Year (1st April to 31st March)												
2008/2009	10	0	0	5	5	13	0	11	3	1	48	
2009/2010	0	0	0	7	5	12	2	6	3	3	38	
2010/2011	7	2	0	6	8	13	0	5	1	0	42	

Source: Dyfed Powys Police, Headquarters, Llangunnor.

For further information please contact:

Lesley Rees, Policy & Research Officer

01267 224462

llrees@carmarthenshire.gov.uk