

CILYCWM WARD: ELECTORAL DIVISION PROFILE

Policy Research and Information Section, Carmarthenshire County Council, May 2012

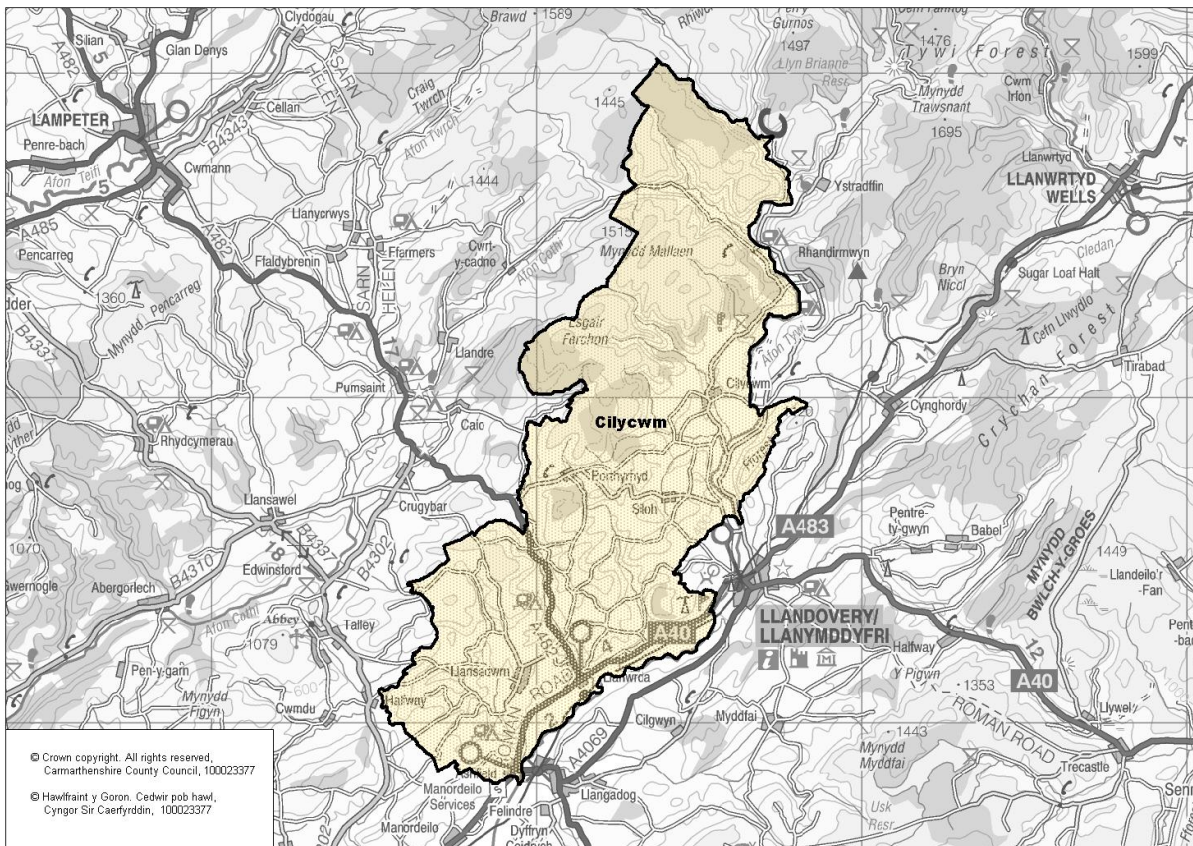
Councillors (Electoral Vote 2012): Tom Theophilus (Independent). Turnout = 59.76%

Electorate (October 2011): 1197

Population: 1,510 (mid -2010 Estimate)

Welsh Assembly and UK Parliamentary Constituency: Carmarthenshire East & Dinefwr

Council owned Facilities: Llanwrda C.P. School, Llansadwrn C.P. School, Cilycwm V.C.P. School, Llansadwrn Luncheon Club.



Location: Approximately 48km from Carmarthen Town

- ⇒ Regeneration Designations: Rural Development Plan 2007-2013 eligible ward
- ⇒ Area: 127.10km²
- ⇒ Population Density: 12 people per km²
- ⇒ Population Change: 2001-2010: +61 (+4%)
- ⇒ Major Employers: Carmarthenshire County Council (schools and leisure)

POPULATION STATISTICS

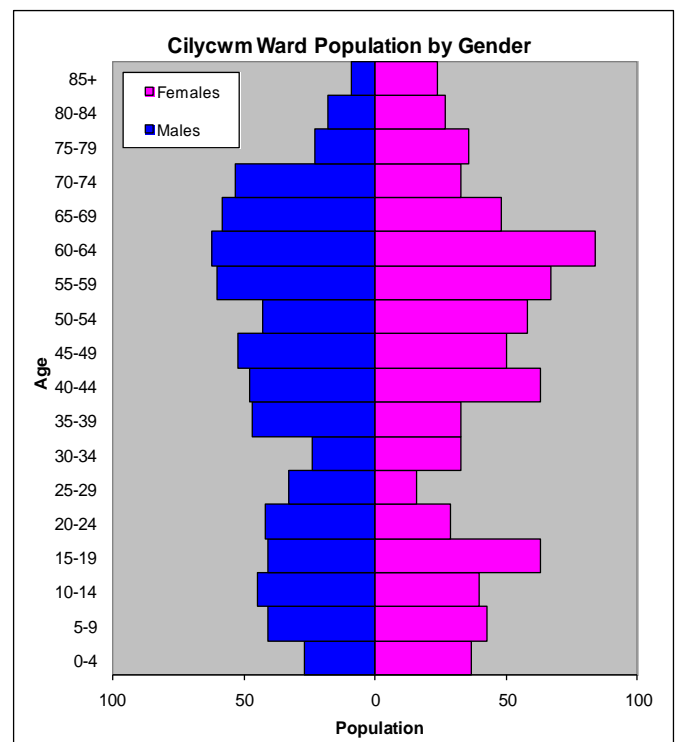
2010 Small Area Population Estimates

Age Structure	Cilycwm Population	Cilycwm %	Carmarthenshire %
Aged: 0-4	64	4.2	5.4
5-14	169	11.2	11.2
15-24	175	11.6	11.8
25-44	297	19.7	22.3
45-64	476	31.5	28.3
65-74	192	12.7	11.2
75+	137	9.1	11.5
Total	1,510	100	100

Births & Deaths	Cilycwm	Carmarthenshire
Birth (2010)	8	1,963
Births Rate	5.3	10.9
Deaths (2010)	10	2077
Death Rate	6.6	11.5

Source: Vital Statistics 2010, ONS.

Note: birth/death rates expressed per '000



Source: aggregated lower Super Output Area (LSOA) Small Area Population Estimates, 2010, Office for National Statistics (ONS)

- ⇒ The lowest ward population in Carmarthenshire, and the 3rd lowest population density
- ⇒ Highest proportion of people aged over 45, proportion aged 65-74 slightly higher than the Carmarthenshire average.
- ⇒ Higher proportion of people with no qualifications
- ⇒ Slightly lower proportion of Welsh Speakers than the Carmarthenshire average.

2001 Census Data

Population: Key Facts	Cilycwm	Cilycwm %	Carmarthenshire
People: born in Wales	875	60.51	80.07
born outside UK	42	2.91	1.93
in non-white ethnic groups	3	0.21	0.94
with limiting long-term illness	285	19.7	26.27
with no qualifications (aged 16-74)	334	31.36	34.04
with higher level qualifications (aged 16-74)	238	22.35	17.24
able to speak Welsh	694	49.25	50.07

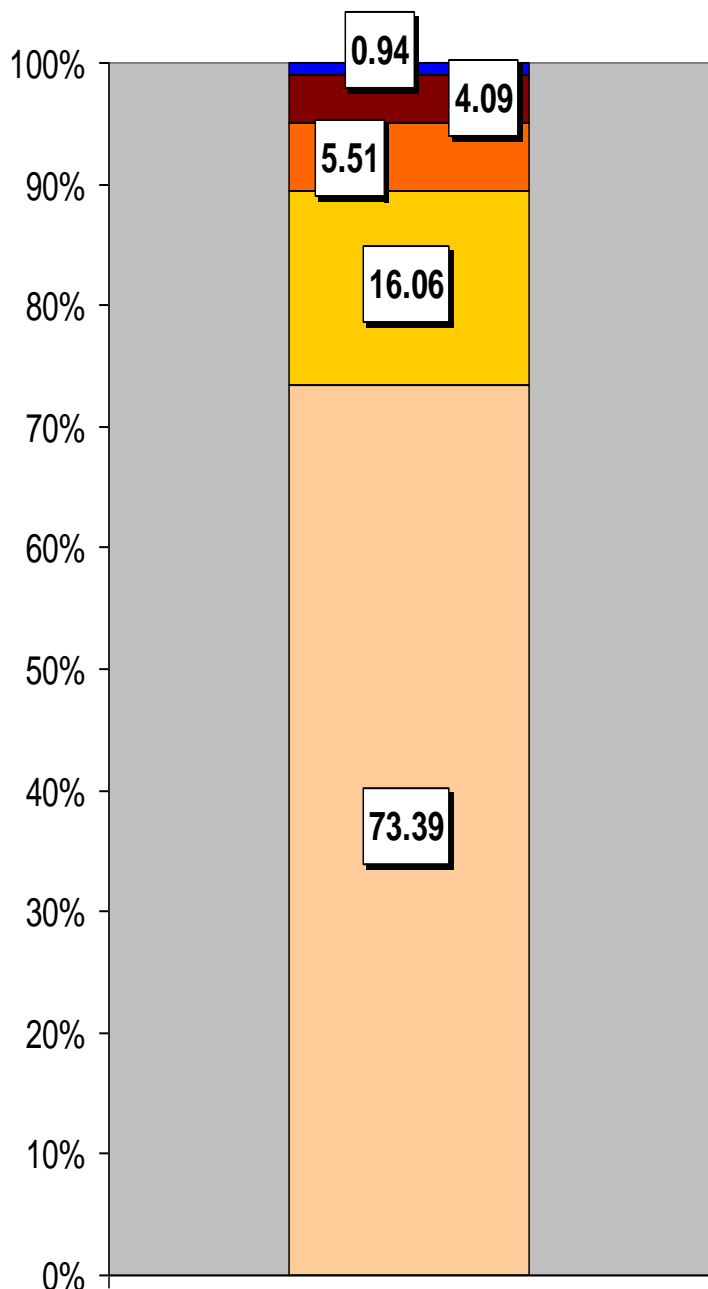
Household Composition	Cilycwm	Cilycwm %	Carmarthenshire
Total Households/ (Average Household Size)	597	(2.42)	(2.33)
Household Type: one person: pensioner	88	14.74	17.15
one person: other	66	11.06	12.81
one family: all pensioners	69	11.56	10.38
one family: married couple	257	43.05	37.35
one family: cohabiting couple	47	7.88	6.26
one family: lone parent	38	6.36	10.29
one family: other	32	5.36	5.79

Source: 2001 Census, ONS

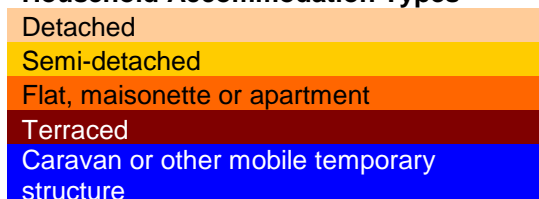
HOUSING

The area's housing consists majorly of detached houses, which is almost three quarters of the housing stock. Terraced and flat, maisonette and apartment, two of the smaller categories, have a very similar proportion. The ward consists of 38 local authority owned properties and 3 Housing Association properties.

Household Accommodation Types



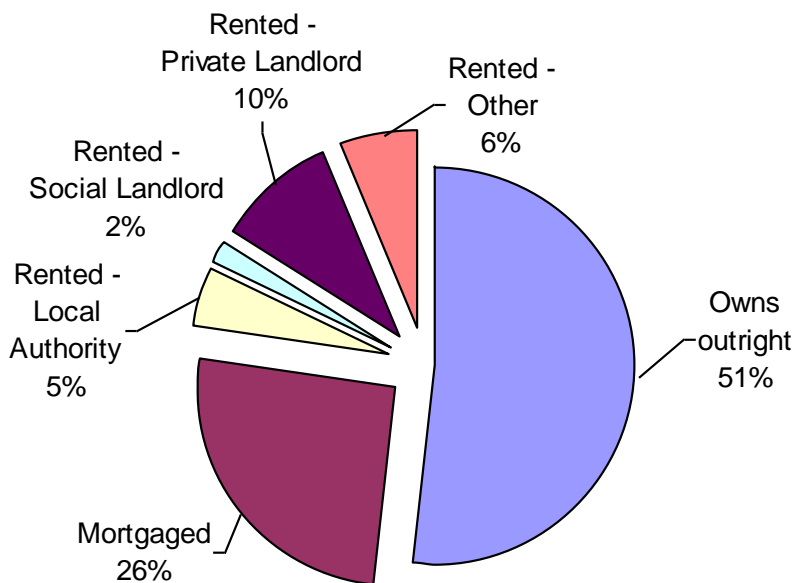
Household Accommodation Types



Household Tenure

Owns outright	51%
Mortgaged	26%
Shared Ownership	0%
Rented from Local Authority	5%
Rented from Registered Social Landlord	2%
Rented from Private Landlord	10%
Rented from other	6%

Household Tenure



SOCIO-ECONOMIC CHARACTERISTICS

- ⇒ The estimated median household income for Cilycwm, based on CACI's 2011 'PayCheck' data, is £23,963 which is the 26th lowest (of 58 wards) in Carmarthenshire and 17.8% below the Carmarthenshire mean of £29,156
- ⇒ The social profile information indicates a lower than average level of people on state benefit, unemployment or low grade workers (grade E) and a higher than average skilled manual workers (grade C2).

Social Profile	Cilycwm	%	Carmarthenshire %
<i>All people aged 16-74 in households</i>	1173	100	100
AB: Higher and intermediate managerial/professional	200	17.05	16.42
C1: Supervisory, clerical, junior managerial/professional	331	28.22	28.5
C2: Skilled manual workers	323	27.54	18.81
D: Semi-skilled and unskilled manual workers	150	12.79	17.88
E: On state benefit, unemployed, lowest grade workers	169	14.41	18.38

Source: 2001 Census, ONS

ECONOMY AND LABOUR MARKET

Benefit Claimants	Cilycwm	Rate %	Carmarthenshire Working Population %
Unemployment Benefit (JSA): March 2012	17		1.8
Incapacity Benefits (ESA/IB/SDA) August 2011	65	7.1	10.6
Income Support: August 2011	30	3.3	4.8
Disability Living Allowance: August 2011	75	8.2	14.6
Pension Credit: August 2011	40	4.3	9.1
State Pension Claimants: August 2011	400	43.5	38.8

Source: Jobcentre Plus administrative system Dept. for Work & Pensions

Economic Status (people aged 16-74)	Cilycwm	Cilycwm %	Carmarthenshire %
Economically Active	668	62.73	58.6
Employees: Part-time	104	9.77	10.75
Employees: Full-time	253	23.76	32.67
Self-employed	278	26.1	10.02
Unemployed	26	2.44	3.37
Full-time Student	7	0.66	1.78
Economically Inactive	397	37.27	41.4
Retired	183	17.18	16.12
Student	44	4.13	4.51
Looking after home/family	76	7.14	6.23
Permanently sick/disabled	62	5.82	11.07
Other	32	3	3.47

Source: 2001 Census, ONS

WELSH INDEX OF MULTIPLE DEPRIVATION (WIMD)

WIMD 2011 based on fine-grained geography of lower Super Output Areas (LSOAs). The WIMD 2011 is compiled from eight domains, Income, Employment, Health, Education, Housing, Access to Services, Physical Environment and Community Safety and is published at Lower Super Output Area of which there are 112 in Carmarthenshire.

Under WIMD, where Rank 1 is the most deprived, **Cilycwm** ranks 67 out of 112 in Carmarthenshire and is ranked 971 in Wales from 1896 LSOAs.

The highest level of deprivation attributed to **Cilycwm** is the Access to Services domain, being ranked 8th in Carmarthenshire and 29th in Wales for this domain.

LSOA	Overall Index		Domains: Income		Employment		Health		Education		Housing		Access to Services		Physical Environment		Community Safety	
	62	976	72	1152	69	1022	112	1794	96	1412	17	620	8	29	76	1154	109	1890
Cilycwm	62	976	72	1152	69	1022	112	1794	96	1412	17	620	8	29	76	1154	109	1890

Source: Welsh Index of Multiple Deprivation 2011 (released August 2011), Welsh Assembly Government.

Note: LSOAs ranked 1-112 (Carmarthenshire), 1-1896 (Wales).

CRIME

Cilycwm	Offence Group											Annual Total
	Violence against the Person	Sexual Offences	Robbery	Burglary	Auto crime	General Theft	Fraud and Forgery	Criminal Damage	Drug Offences	Other		
Fiscal Year (1st April to 31st March)												
2008/2009	2	0	0	0	0	5	0	1	5	1	14	
2009/2010	3	0	0	2	0	3	0	2	5	0	15	
2010/2011	2	0	0	3	2	6	0	3	0	0	16	

Source: Dyfed Powys Police, Headquarters, Llangunnon.

For further information please contact:

Lesley Rees, Policy & Research Officer

01267 224462

llrees@carmarthenshire.gov.uk