

BETWS WARD: ELECTORAL DIVISION PROFILE

Policy Research and Information Section, Carmarthenshire County Council, May 2012

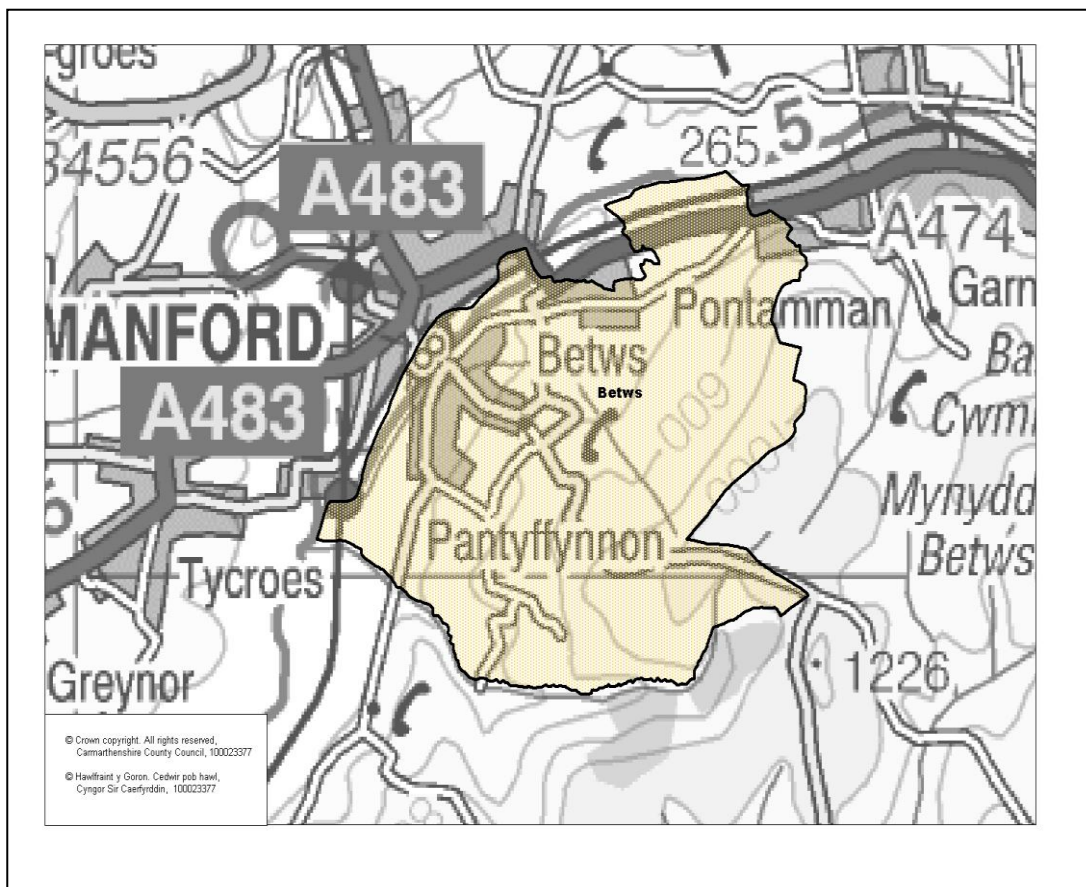
Councillors (Electoral Vote 2012): Ryan Bartlett (Labour). Turnout = 44.26%,

Electorate (October 2011): 1712

Population: 2,083 (mid -2010 Estimate)

Welsh Assembly and UK Parliamentary Constituency: Carmarthenshire East & Dinefwr

Council owned Facilities: Betws C.P. School, Maesquarre Road Play Area, Betws Park, Betws Mountain Picnic Site



- ⇒ Location: Approximately 34km from Carmarthen Town
- ⇒ Area: 11.12 km²
- ⇒ Population Density: 187 people per km²
- ⇒ Population Change: 2001-2010: +259 (+12.4%)
- ⇒ Major Employers: Carmarthenshire County Council (schools and leisure)

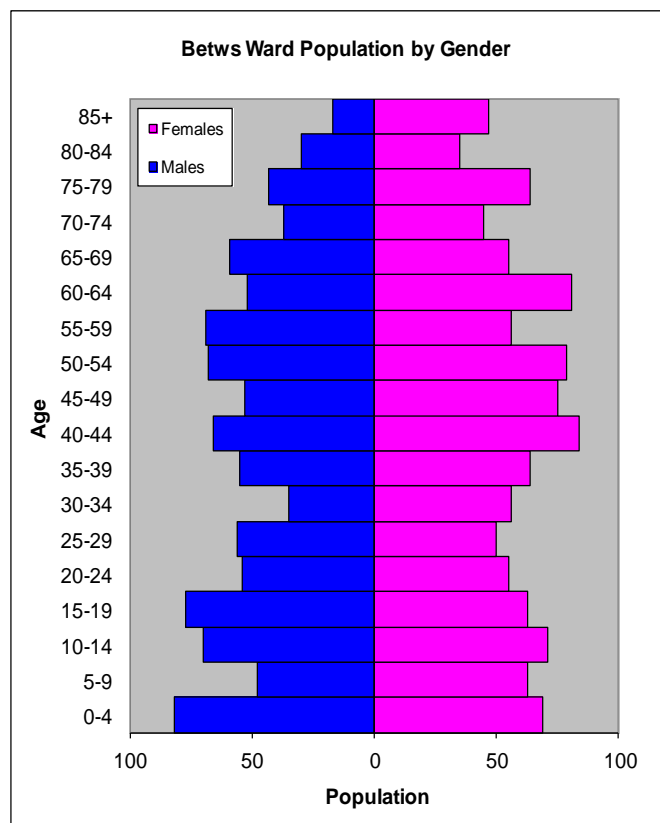
POPULATION STATISTICS 2010 Small Area Population Estimates

Age Structure	Betws Population	Betws %	Carmarthenshire %
Aged: 0-4	151	7.2	5.4
5-14	252	12.1	11.2
15-24	249	12.06	11.8
25-44	466	22.4	22.3
45-64	533	25.6	28.3
65-74	196	9.4	11.2
75+	236	11.3	11.5
Total	2,083	100	100

Births & Deaths	Betws	Carmarthenshire
Birth (2010)	31	1,963
Births Rate	14.9	10.9
Deaths (2010)	34	2077
Death Rate	16.31	11.5

Source: Vital Statistics 2010, ONS.

Note: birth/death rates expressed per '000



Source: aggregated lower Super Output Area (LSOA) Small Area Population Estimates, 2010, Office for National Statistics (ONS)

- ⇒ 10th lowest ward population in Carmarthenshire, and 27th highest population density.
- ⇒ Highest proportion of people aged over 45
- ⇒ Higher proportion of people with no qualifications
- ⇒ High proportion of Welsh Speakers

2001 Census Data

Population: Key Facts	Betws	Betws %	Carmarthenshire
People: born in Wales	1514	82.55	80.07
born outside UK	26	1.42	1.93
in non-white ethnic groups	12	0.64	0.94
with limiting long-term illness	544	29.66	26.27
with no qualifications (aged 16-74)	436	34.71	34.04
with higher level qualifications (aged 16-74)	235	18.71	17.24
able to speak Welsh	1118	62.78	50.07

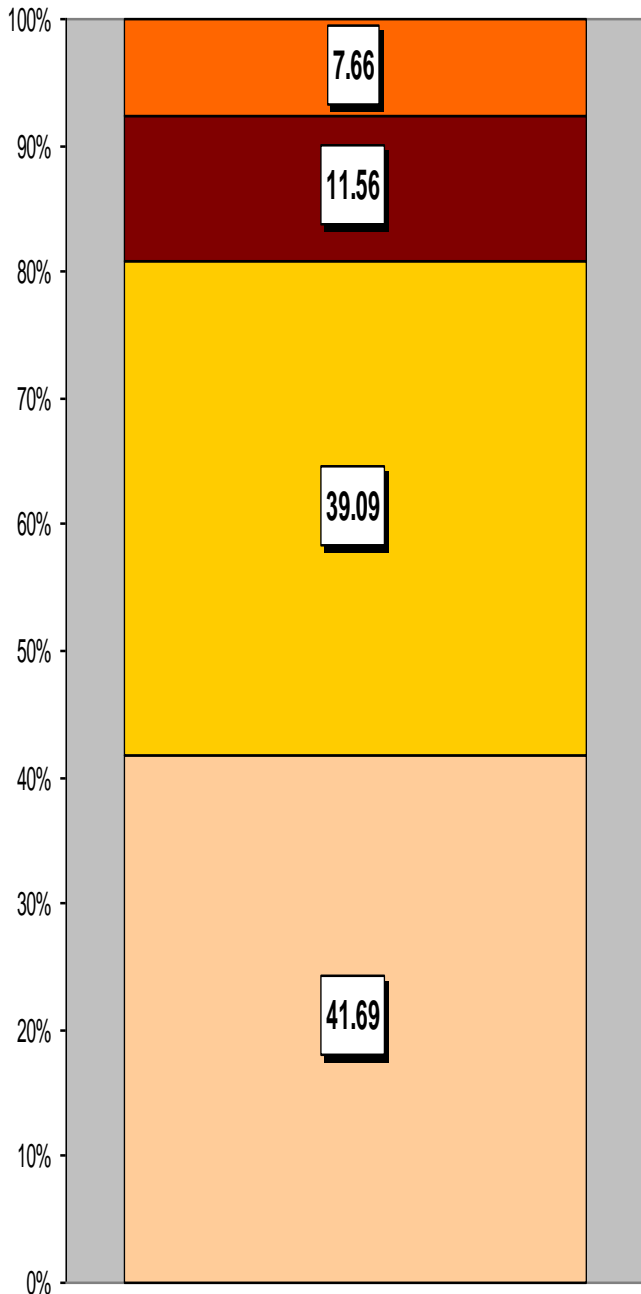
Household Composition	Betws	Betws %	Carmarthenshire
Total Households/ (Average Household Size)	739	(2.39)	(2.33)
Household Type: one person: pensioner	118	15.97	17.15
one person: other	74	10.01	12.81
one family: all pensioners	88	11.91	10.38
one family: married couple	278	37.61	37.35
one family: cohabiting couple	37	5.01	6.26
one family: lone parent	94	12.72	10.29
one family: other	50	6.77	5.79

Source: 2001 Census, ONS

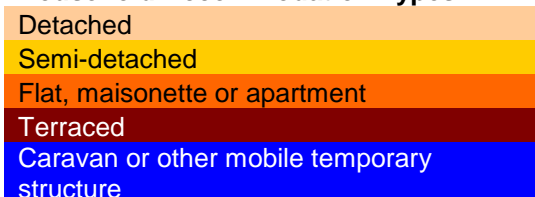
HOUSING

The area's housing consists majorly of detached houses but is almost equalled by semi-detached. There is a lower proportion of terraced housing, with the lowest proportion being flat, maisonette or apartment group. The ward consists of 73 local authority owned properties and 140 Housing Association properties.

Household Accommodation Types

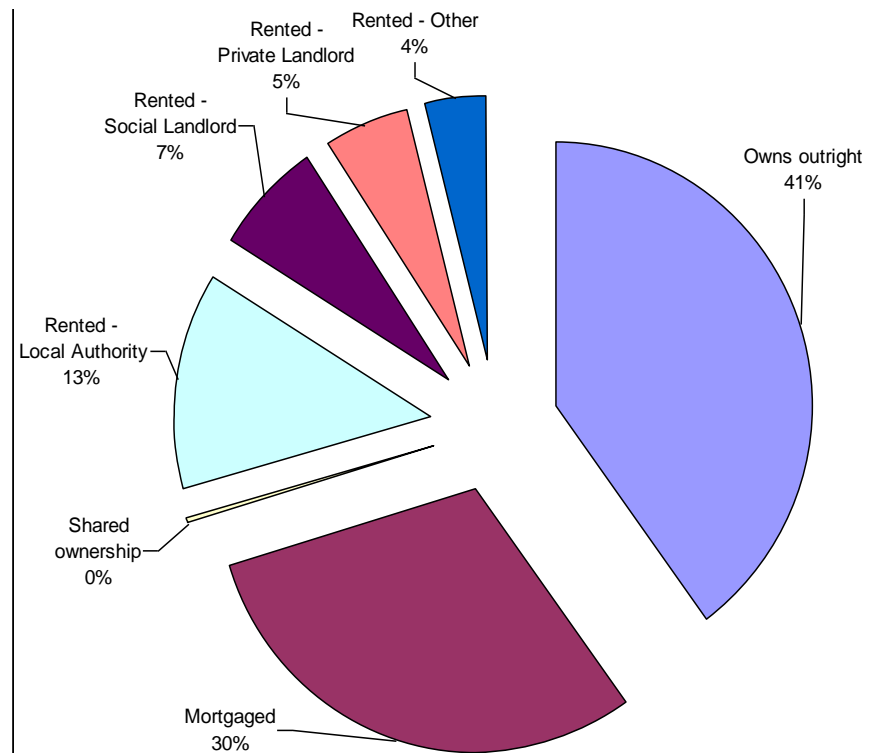


Household Accommodation Types



Household Tenure

Owns outright	41%
Mortgaged	30%
Shared Ownership	0%
Rented from Local Authority	13%
Rented from Registered Social Landlord	7%
Rented from Private Landlord	5%
Rented from other	4%



SOCIO-ECONOMIC CHARACTERISTICS

- ⇒ The estimated median household income for Betws, based on CACI's 2011 'PayCheck' data, is £26,975 which is the 11th highest (of 58 wards) in Carmarthenshire but 7.5% below the Carmarthenshire mean of £29,156.
- ⇒ The social profile information indicates a higher than average level of people on state benefit, unemployment or low grade workers (grade E) and a higher than average semi-skilled and unskilled manual workers (grade D).

Social Profile	Betws	%	Carmarthenshire %
<i>All people aged 16-74 in households</i>	1390	100	100
AB: Higher and intermediate managerial/professional	274	19.71	16.42
C1: Supervisory, clerical, junior managerial/professional	383	27.55	28.50
C2: Skilled manual workers	248	17.84	18.81
D: Semi-skilled and unskilled manual workers	231	16.62	17.88
E: On state benefit, unemployed, lowest grade workers	254	18.27	18.38

Source: 2001 Census, ONS

ECONOMY AND LABOUR MARKET

Benefit Claimants	Betws	Rate %	Carmarthenshire Working Population %
Unemployment Benefit (JSA): March 2012	31	2.5	3.4
Incapacity Benefits (ESA/IB/SDA) August 2011	120	9.8	10.6
Income Support: August 2011	55	4.5	4.8
Disability Living Allowance: August 2011	190	15.5	14.6
Pension Credit: August 2011	130	10.6	9.1
State Pension Claimants: August 2011	490	40.0	38.8

Source: Jobcentre Plus administrative system Dept. for Work & Pensions

Economic Status (people aged 16-74)	Betws	Betws %	Carmarthenshire %
Economically Active	674	53.66	58.6
Employees: Part-time	115	9.16	10.75
Employees: Full-time	416	33.12	32.67
Self-employed	95	7.56	10.02
Unemployed	31	2.47	3.37
Full-time Student	17	1.35	1.78
Economically Inactive	582	46.33	41.4
Retired	202	16.08	16.12
Student	73	5.81	4.51
Looking after home/family	104	8.28	6.23
Permanently sick/disabled	149	11.86	11.07
Other	54	4.3	3.47

Source: 2001 Census, ONS

WELSH INDEX OF MULTIPLE DEPRIVATION (WIMD)

WIMD 2011 based on fine-grained geography of lower Super Output Areas (LSOAs). The WIMD 2011 is compiled from eight domains, Income, Employment, Health, Education, Housing, Access to Services, Physical Environment and Community Safety and is published at Lower Super Output Area of which there are 112 in Carmarthenshire. Under WIMD, where Rank 1 is the most deprived, **Betws** ranks 49 out of the 112 LSOAs in Carmarthenshire and ranks 829 in Wales from 1896 LSOAs.

The highest level of deprivation attributed to **Betws** is the Access to services domain, being ranked 39th in Carmarthenshire and 304th in Wales for this domain.

LSOA	Overall Index		Income		Employment		Health		Education		Housing		Access to Services		Physical Environment		Community Safety	
	40	692	42	771	47	782	28	513	47	888	67	1138	39	304	28	473	43	1209
Betws	40	692	42	771	47	782	28	513	47	888	67	1138	39	304	28	473	43	1209

Source: Welsh Index of Multiple Deprivation 2011 (released August 2011), Welsh Assembly Government.

Note: LSOAs ranked 1-112 (Carmarthenshire), 1-1896 (Wales).

CRIME

Fiscal Year (1st April to 31st March)	Offence Group										Annual Total
	Violence against the Person	Sexual Offences	Robbery	Burglary	Auto crime	General Theft	Fraud and Forgery	Criminal Damage	Drug Offences	Other	
2008/2009	11	0	0	6	10	6	1	14	9	1	58
2009/2010	14	1	0	5	9	20	0	21	31	0	101
2010/2011	21	3	0	8	5	14	3	8	23	2	87

Source: Dyfed Powys Police, Headquarters, Llangunnor.

For further information please contact:

Lesley Rees, Policy & Research Officer

01267 224462

llrees@carmarthenshire.gov.uk