

AMMANFORD WARD: ELECTORAL DIVISION PROFILE

Policy Research and Information Section, Carmarthenshire County Council, May 2012

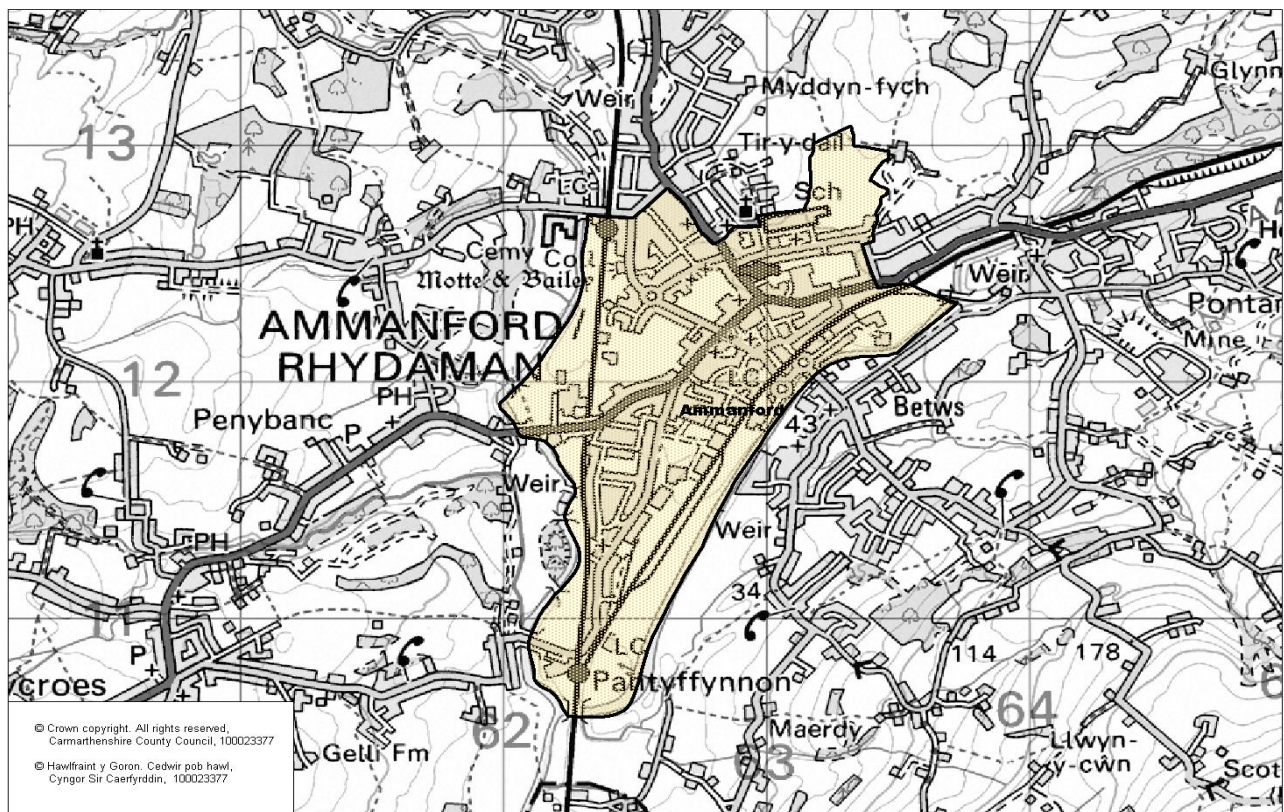
Councillors (Electoral Vote 2012): Deian Harries (Plaid Cymru). Turnout = 48.25%

Electorate (October 2011): 1965

Population: 2,660 (mid -2010 Estimate)

Welsh Assembly and UK Parliamentary Constituency: Carmarthenshire East & Dinefwr

Council owned Facilities: Ammanford Town Hall, Amman Centre, Ammanford Social Activity Centre, Ammanford Nursery School, Ysgol Bro Banw, Parcyrhun C.P. School, Ysgol Gymraeg Rhydaman, Amman Valley Comprehensive School/Leisure Centre, Ysgol Bro Banw Special Education Unit, Ammanford Library, Ammanford Indoor Bowls Centre, Ammanford Park, Pantyffynnon Road Playground, Ammanford Miners Welfare Hall.



Location: Approximately 33.3 km from Carmarthen Town

- ⇒ Area: 1.76km²
- ⇒ Population Density: 1511 people per km²
- ⇒ Population Change: 2001-2010: -7 (-0.3%)
- ⇒ Major Employers: Carmarthenshire County Council (schools and leisure)

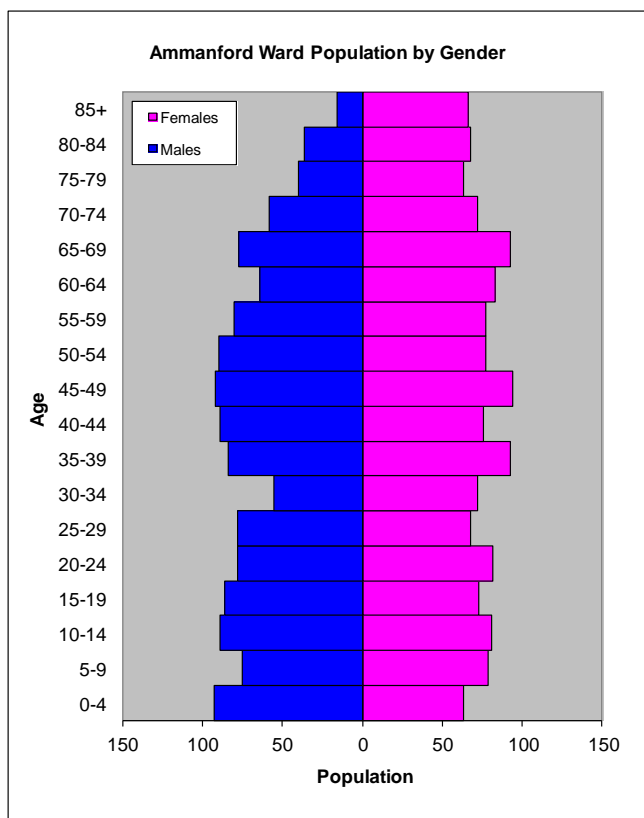
POPULATION STATISTICS

2010 Small Area Population Estimates

Age Structure	Ammanford Population	Ammanford %	Carmarthenshire %
Aged: 0-4	156	5.9	5.4
5-14	324	12.2	11.2
15-24	319	12.0	11.8
25-44	615	23.1	22.3
45-64	657	24.7	28.3
65-74	300	11.3	11.2
75+	289	10.9	11.5
Total	2,660	100	100

Births & Deaths	Ammanford	Carmarthenshire
Birth (2010)	22	1,963
Births Rate	8.3	10.9
Deaths (2010)	40	2077
Death Rate	15.0	11.5

Source: Vital Statistics 2010, ONS.
Note: birth/death rates expressed per '000



Source: aggregated lower Super Output Area (LSOA) Small Area Population Estimates, 2010, Office for National Statistics (ONS)

- ⇒ 23rd lowest ward population in Carmarthenshire, and 6th highest population density.
- ⇒ Highest proportion of people aged over 45.
- ⇒ Higher proportion of people with no qualifications
- High proportion of Welsh Speakers

2001 Census Data

Population: Key Facts	Ammanford	Ammanford %	Carmarthenshire
People: born in Wales	2347	88.1	80.07
born outside UK	42	1.58	1.93
in non-white ethnic groups	19	0.7	0.94
with limiting long-term illness	864	32.43	26.27
with no qualifications (aged 16-74)	737	39.9	34.04
with higher level qualifications (aged 16-74)	275	14.89	17.24
able to speak Welsh	1599	62.05	50.07

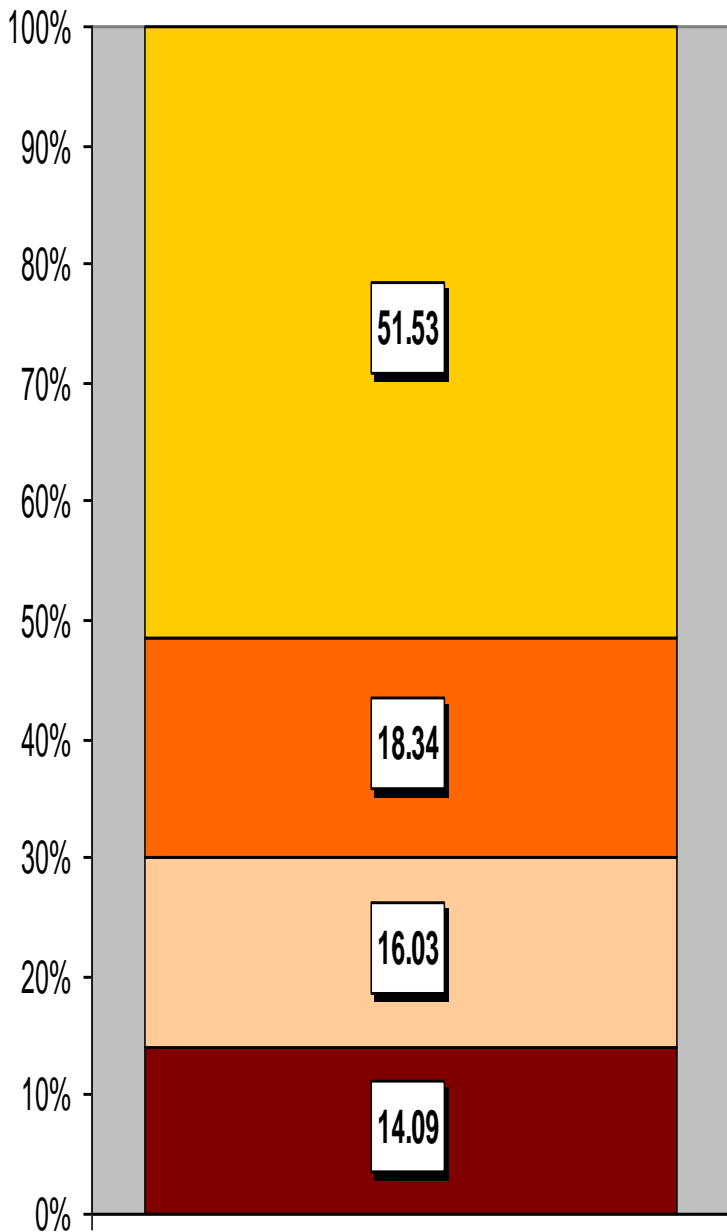
Household Composition	Ammanford	Ammanford %	Carmarthenshire
Total Households/ (Average Household Size)	1242	(2.14)	(2.33)
Household Type: one person: pensioner	272	21.9	17.15
one person: other	204	16.43	12.81
one family: all pensioners	132	10.63	10.38
one family: married couple	355	28.58	37.35
one family: cohabiting couple	67	5.4	6.26
one family: lone parent	132	10.63	10.29
one family: other	80	6.44	5.79

Source: 2001 Census, ONS

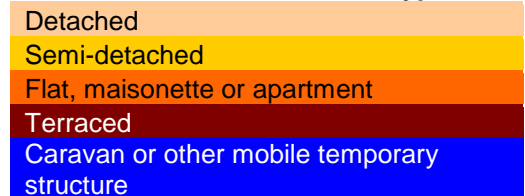
HOUSING

The area's housing consists mostly of semi-detached houses and a higher proportion of flat/maisonette or apartments in comparison to the proportion of detached and terraced housing. The ward consists of 206 local authority owned properties and 122 Housing Association properties.

Household Accommodation Types

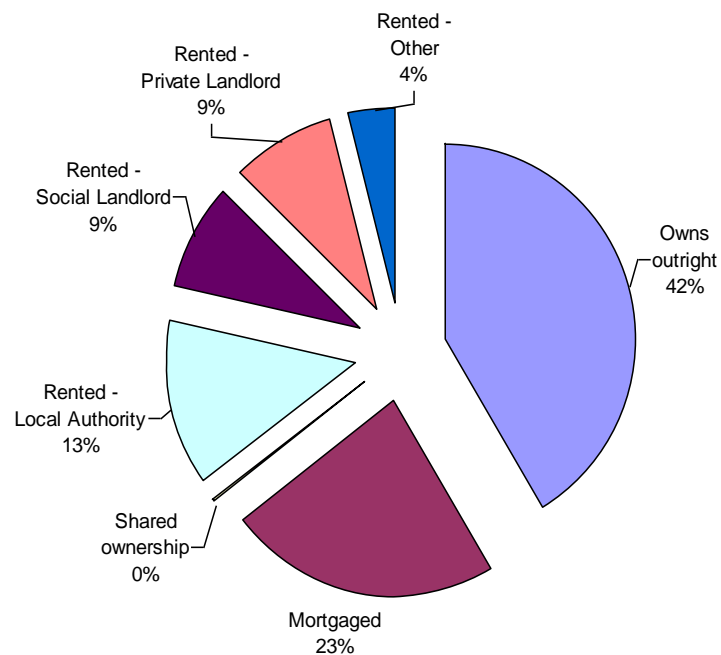


Household Accommodation Types



Household Tenure

Owns outright	42%
Mortgaged	23%
Shared Ownership	0%
Rented from Local Authority	13.5%
Rented from Registered Social Landlord	9%
Rented from Private Landlord	9%
Rented from other	1.5%



SOCIO-ECONOMIC CHARACTERISTICS

- ⇒ The estimated median household income for Ammanford, based on CACI's 2011 'PayCheck' data, is £21,324 which is the 10th lowest (of 58 wards) in Carmarthenshire and 26.9% below the Carmarthenshire mean of £29,156.
- ⇒ The social profile information indicates a higher than average level of people on state benefit, unemployment or low grade workers (grade E) and a higher than average semi-skilled and unskilled manual workers (grade D).

Social Profile	Ammanford	%	Carmarthenshire %
<i>All people aged 16-74 in households</i>	2168	100	100
AB: Higher and intermediate managerial/professional	275	12.68	16.42
C1: Supervisory, clerical, junior managerial/professional	625	28.83	28.50
C2: Skilled manual workers	321	14.81	18.81
D: Semi-skilled and unskilled manual workers	429	19.79	17.88
E: On state benefit, unemployed, lowest grade workers	518	23.89	18.38

Source: 2001 Census, ONS

ECONOMY AND LABOUR MARKET

Benefit Claimants	Ammanford	Rate %	Carmarthenshire Working Population %
Unemployment Benefit (JSA): March 2012	53	3.4	3.4
Incapacity Benefits (ESA/IB/SDA): August 2011	240	15.5	10.6
Income Support: August 2011	120	7.7	4.8
Disability Living Allowance: August 2011	335	21.6	14.6
Pension Credit: August 2011	190	12.3	9.1
State Pension Claimants: August 2011	645	41.6	38.8

Source: Jobcentre Plus administrative system Dept. for Work & Pensions

Economic Status (people aged 16-74)	Ammanford	Ammanford %	Carmarthenshire %
Economically Active	968	52.40	58.6
Employees: Part-time	187	10.12	10.75
Employees: Full-time	577	31.24	32.67
Self-employed	95	5.14	10.02
Unemployed	78	4.22	3.37
Full-time Student	31	1.68	1.78
Economically Inactive	879	47.60	41.4
Retired	332	17.98	16.12
Student	80	4.33	4.51
Looking after home/family	120	6.5	6.23
Permanently sick/disabled	285	15.43	11.07
Other	62	3.36	3.47

Source: 2001 Census, ONS

WELSH INDEX OF MULTIPLE DEPRIVATION (WIMD)

WIMD 2011 based on fine-grained geography of Lower Super Output Areas (LSOAs). The WIMD 2011 is compiled from eight domains, Income, Employment, Health, Education, Housing, Access to Services, Physical Environment and Community Safety and is published at Lower Super Output Area of which there are 112 in Carmarthenshire.

Under WIMD, where Rank 1 is the most deprived, **Ammanford 1** ranks 12 out of the 112 LSOAs in Carmarthenshire and ranks 374 in Wales from 1896 LSOAs whilst **Ammanford 2** ranks 36 out of the 112 LSOAs in Carmarthenshire and ranks 684 in Wales from 1896 LSOAs.

The highest level of deprivation attributed to **Ammanford 1** is the Health domain, being ranked 7th in Carmarthenshire and 177th in Wales for this domain, whilst in **Ammanford 2** the highest level of deprivation is the Community Safety domain, ranked 14th in Carmarthenshire and 497 in Wales for this domain.

LSOA	Overall Index		Income		Employment		Health		Education		Housing		Access to Services		Physical Environment		Community Safety	
	Rank	Score	Rank	Score	Rank	Score	Rank	Score	Rank	Score	Rank	Score	Rank	Score	Rank	Score	Rank	Score
Ammanford 1	12	373	19	480	14	480	7	177	16	465	80	1268	82	959	20	320	22	847
Ammanford 2	36	684	21	583	23	583	39	663	69	1120	54	1059	112	1833	32	524	14	497

Ammanford 1 – Pantyffynnon, Ammanford 2 – Ammanford Town Hall, Foundry Road.

Source: Welsh Index of Multiple Deprivation 2011 (released August 2011), Welsh Assembly Government.

Note: LSOAs ranked 1-112 (Carmarthenshire), (1-1896 (Wales)).

CRIME

Ammanford	Offence Group										Annual Total
	Violence against the Person	Sexual Offences	Robbery	Burglary	Auto crime	General Theft	Fraud and Forgery	Criminal Damage	Drug Offences	Other	
2008/2009	86	8	2	51	45	84	14	106	55	8	459
2009/2010	73	7	0	28	29	96	23	59	54	5	374
2010/2011	86	16	0	19	19	86	5	55	93	5	384

Source: Dyfed Powys Police, Headquarters, Llangunnor.

For further information please contact:

Lesley Rees, Policy & Research Officer

01267 224462

llrees@carmarthenshire.gov.uk