



TORONTO TRANSIT COMMISSION

# Pape Station Modernization

## Construction Status Update

# Welcome

# Please sign in

# October 27, 2012



# Project Scope

The Station Modernization Project will result in the following benefits for passengers using Pape Station:

- **Full station accessibility**  
New elevators, automatic sliding doors, barrier-free turnstile and way finding signage
- **Enhanced overall station appearance**  
Artwork, landscaping, station finishes, lighting, benches and signs
- **Improved passenger circulation and comfort**  
New weather protected waiting area and larger concourse area
- **Faster exiting from the station**  
New second exit
- **Improved passenger safety**  
Additional lighting and fire alarm systems
- **Improved bicycle parking**



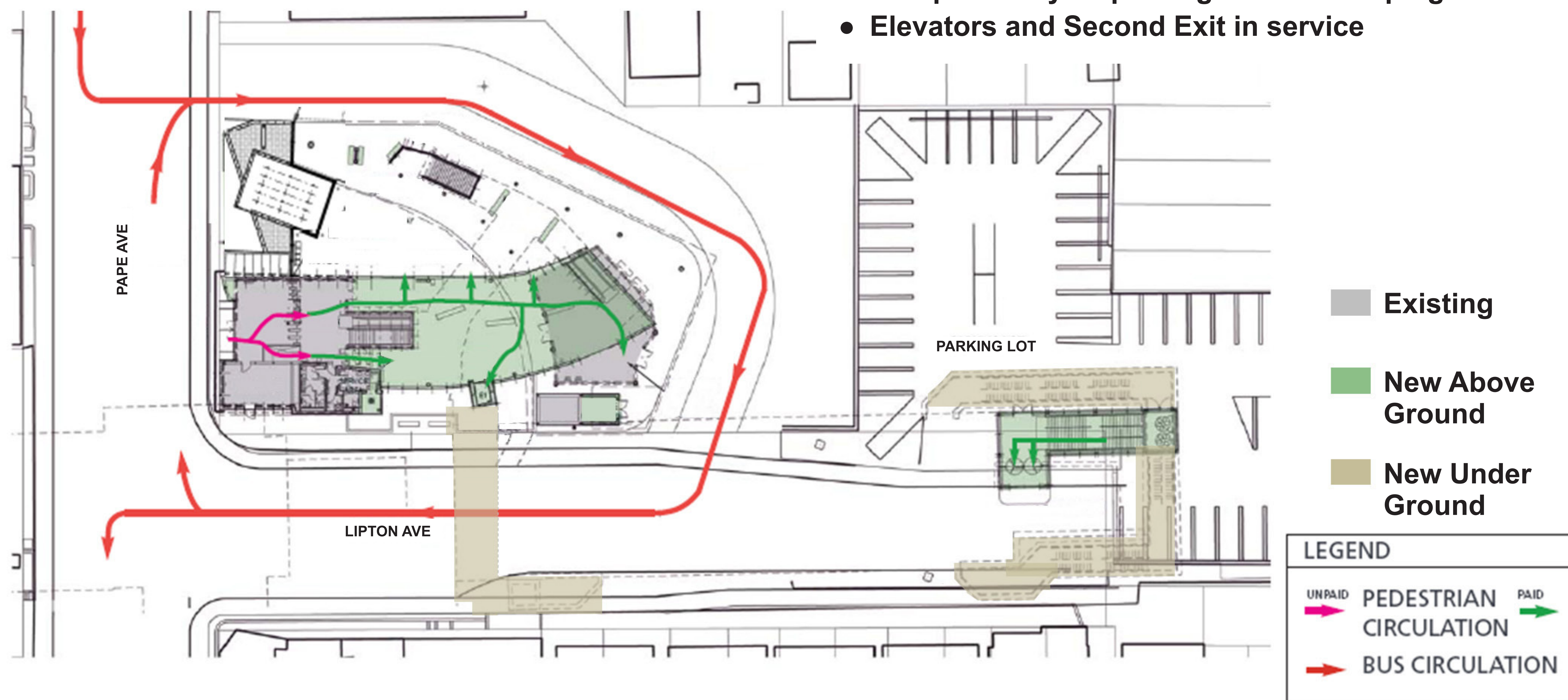
# Pape Station Site Plan

## By end of 2012:

- Reinstate Lipton Avenue and Tim Hortons
- Enclose station entrance and bus platform

## By Fall of 2013:

- Complete station building finishes and artwork installations
- Complete bicycle parking and landscaping
- Elevators and Second Exit in service





# Pape Station Site Plan



Before



After



# Pape Station Exterior

After



Before



Exterior Artwork



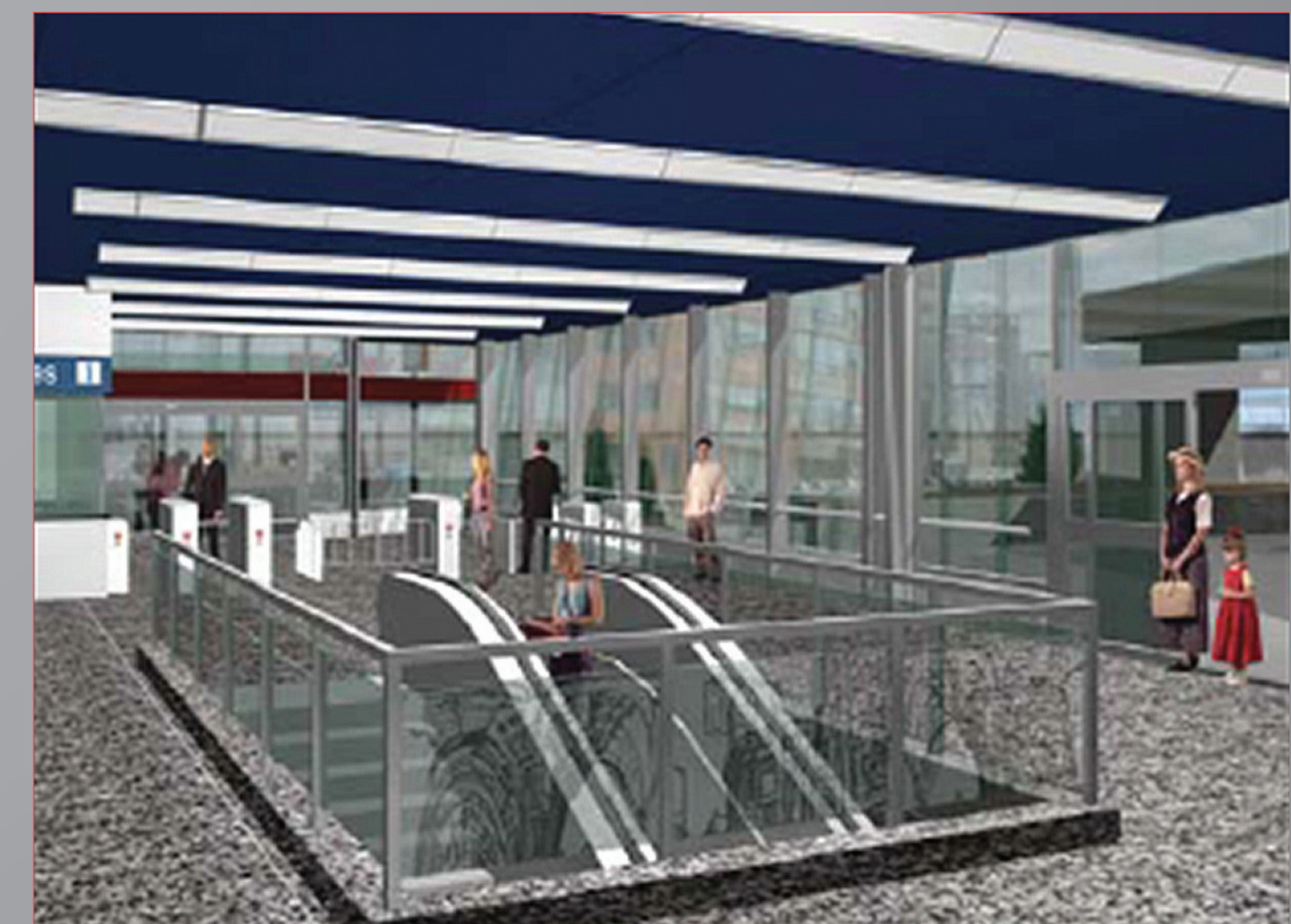
# Pape Station Street Level Interior and

## 2nd Exit Building



2nd Exit Building

Before



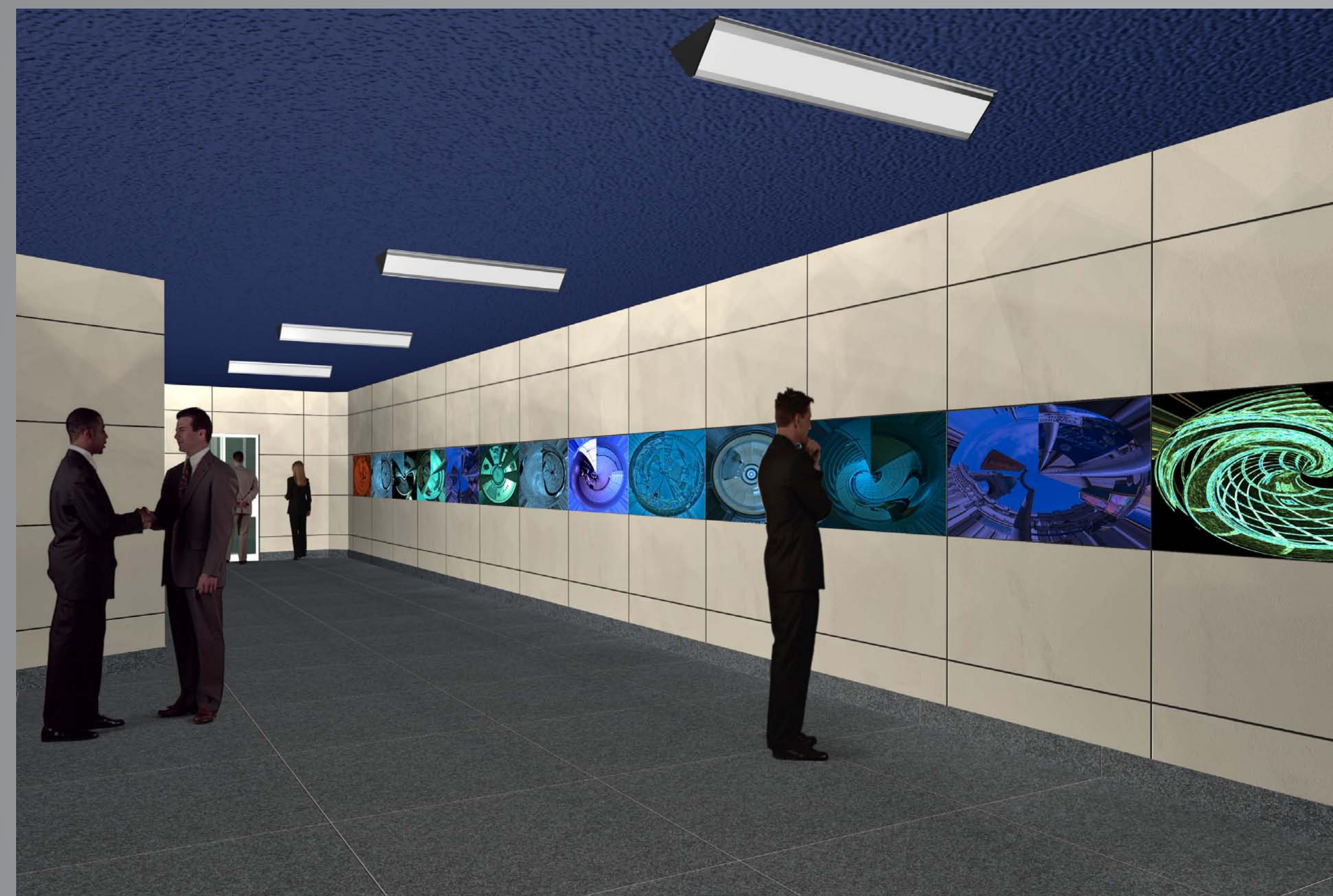
Street Level Interior – New weather protected waiting area



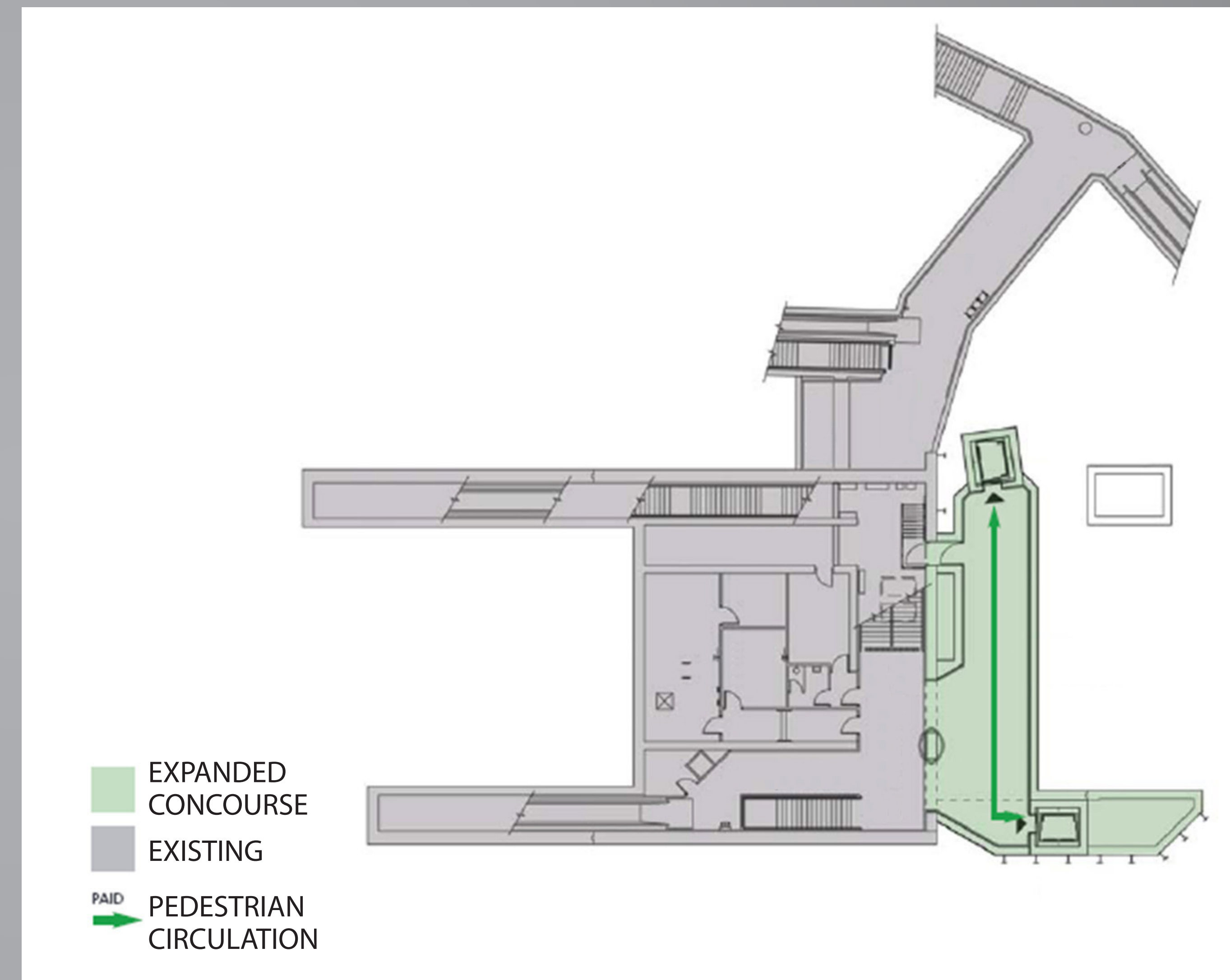
# Pape Station Concourse Level

By Fall of 2013:

- Complete finishes and artwork installations
- Elevators in service



Expanded concourse with new artwork

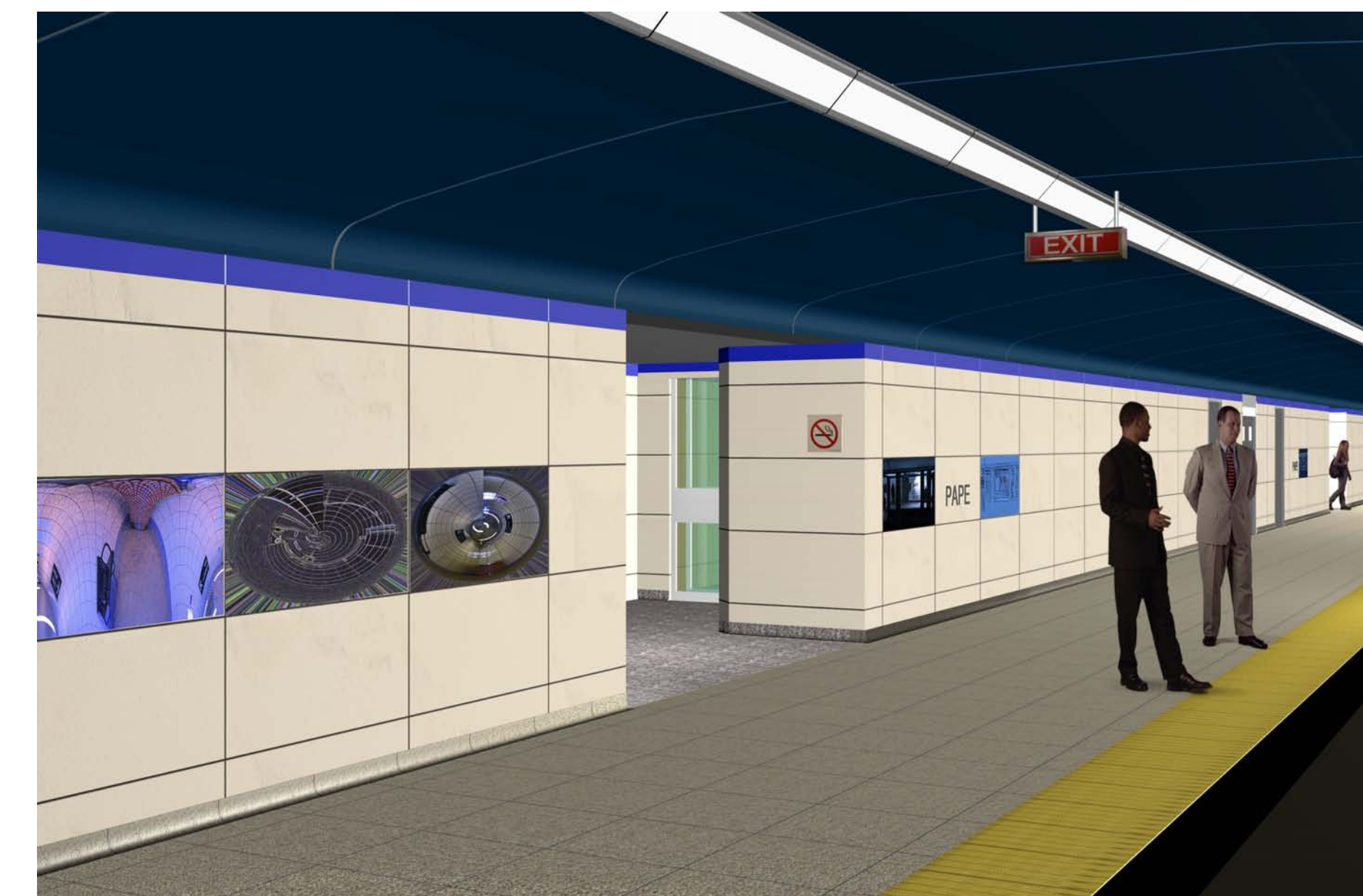
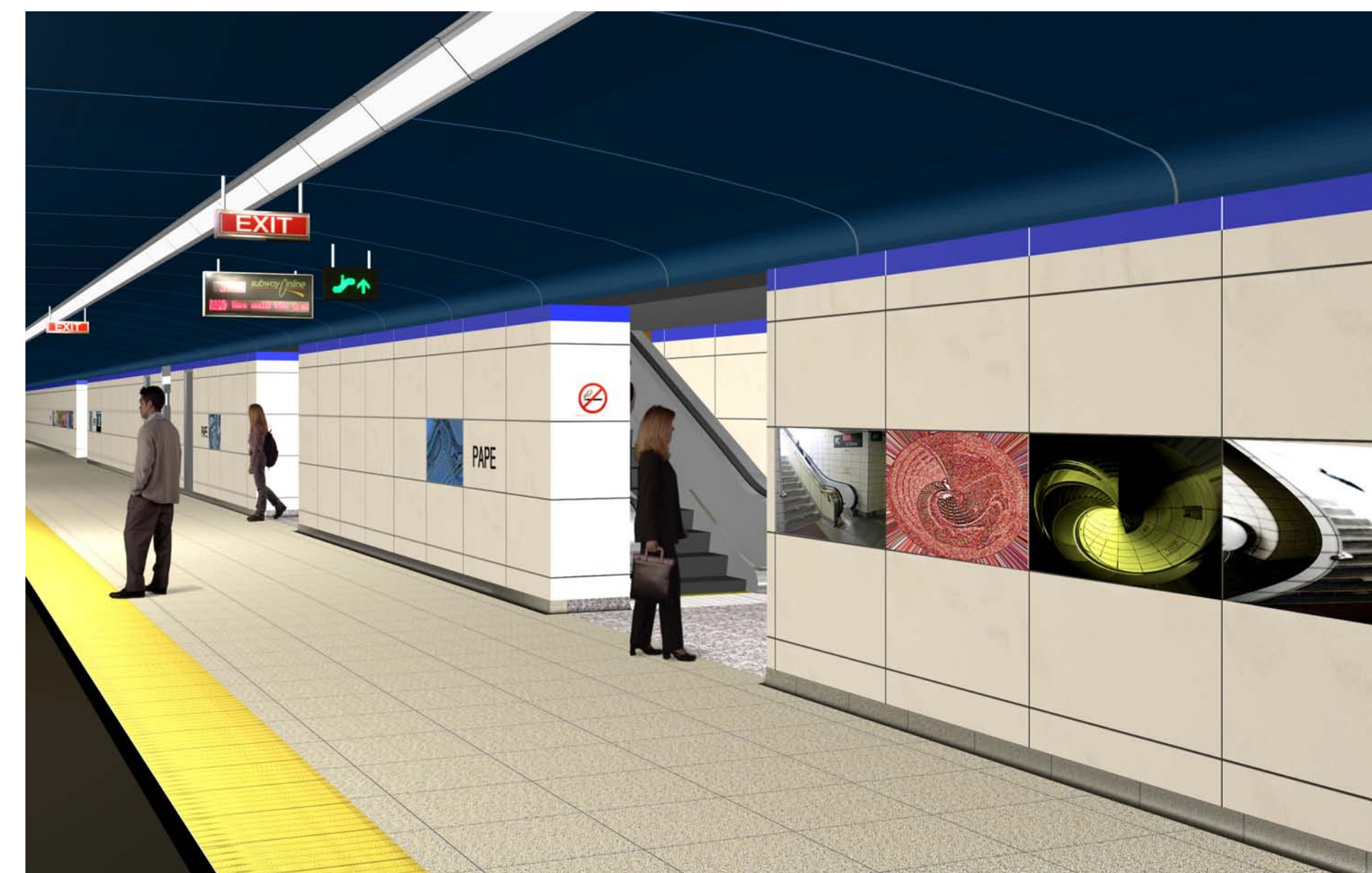
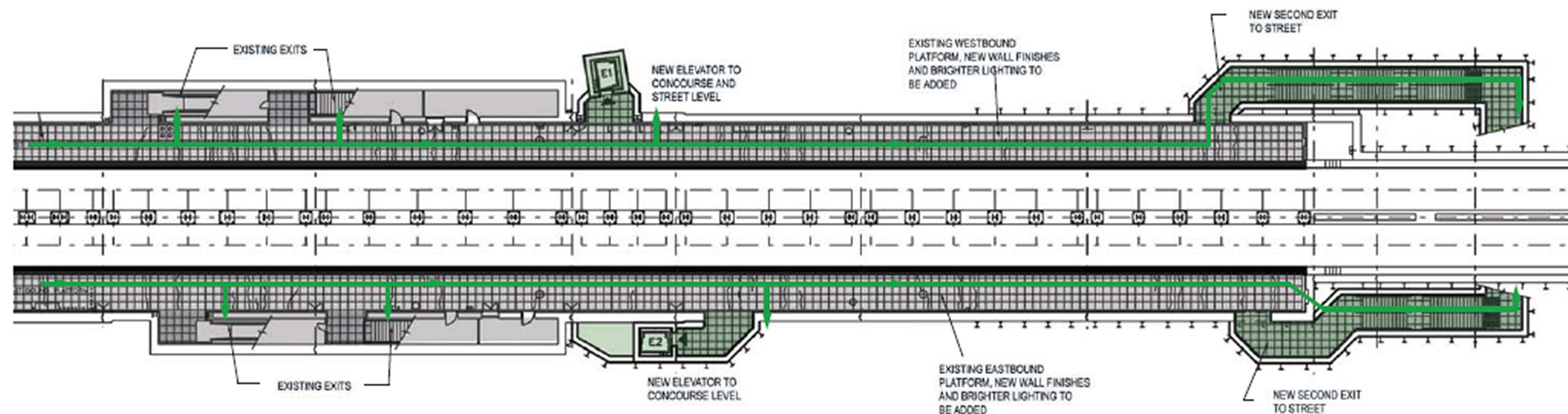




# Pape Station Platform Level

By Fall of 2013:

- Complete finishes and artwork installations
- Elevators in service



Platform Level





# Construction Mitigation Measures

- Staged construction to maintain station operations;
- Decked excavations;
- Travel width maintained for vehicle, bus and emergency services access;
- Temporary access platforms installed for access to residences with provision of maintenance including snow removal;
- Regular garbage and recycle bin pick up for Lipton Avenue residents; and
- Parking at TPA lots for Lipton Avenue residents whose street parking and driveway access are restricted.



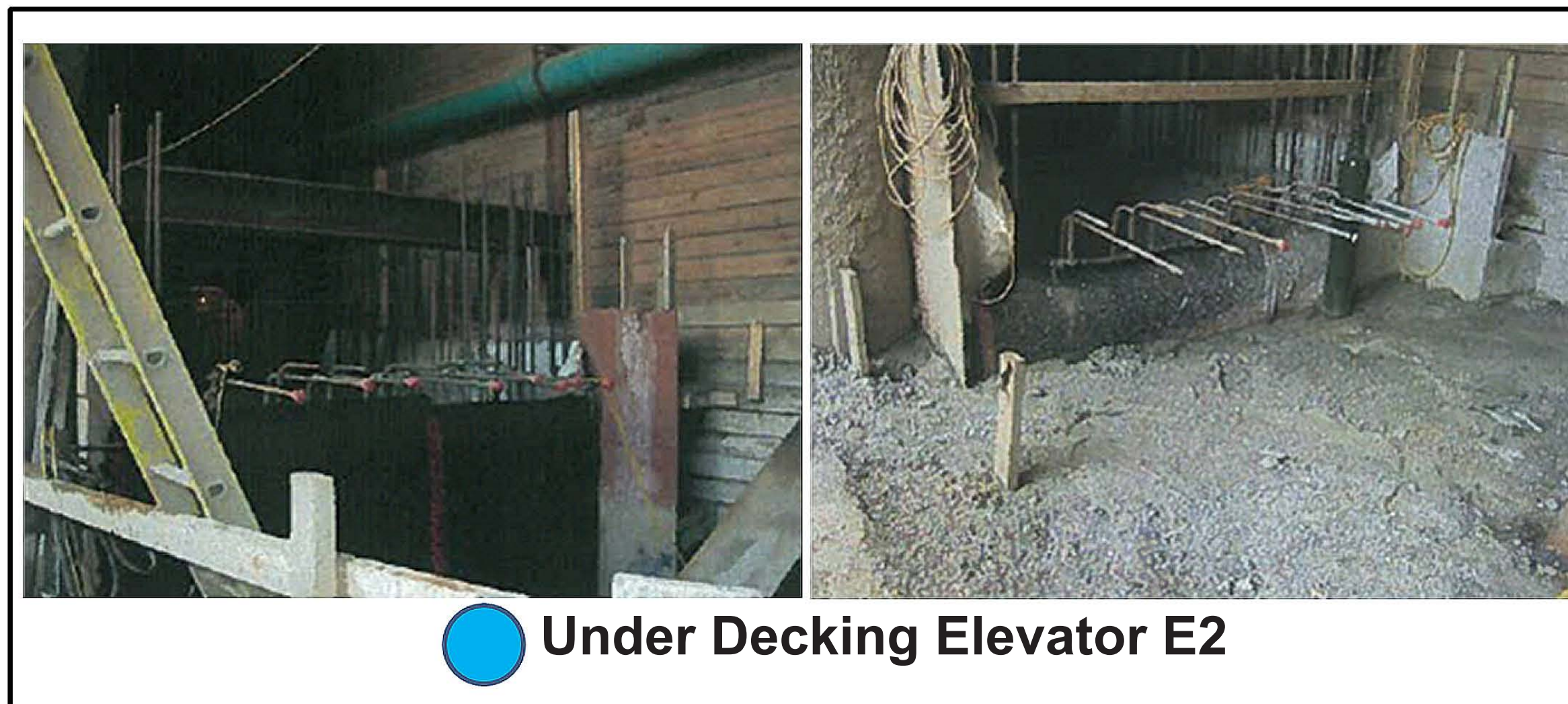
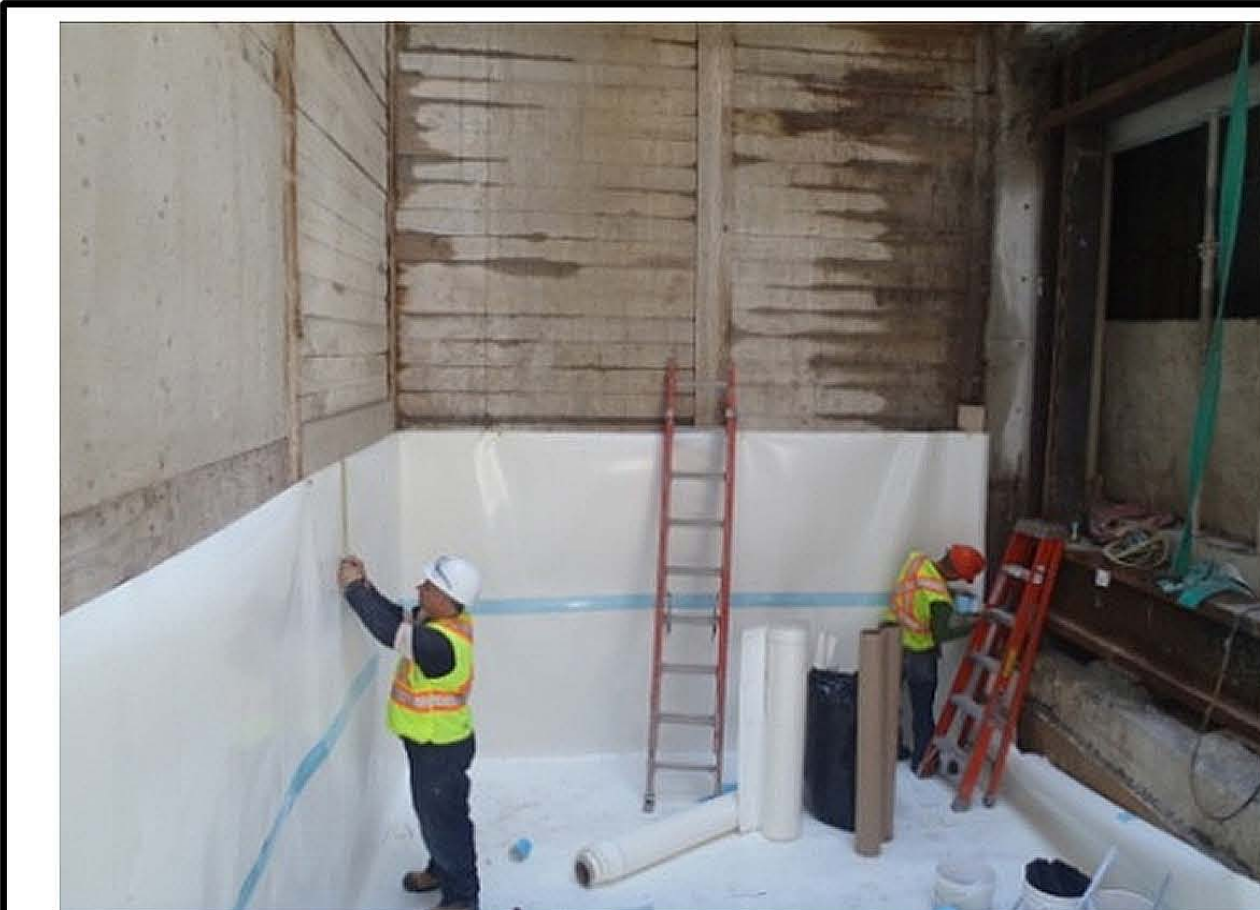
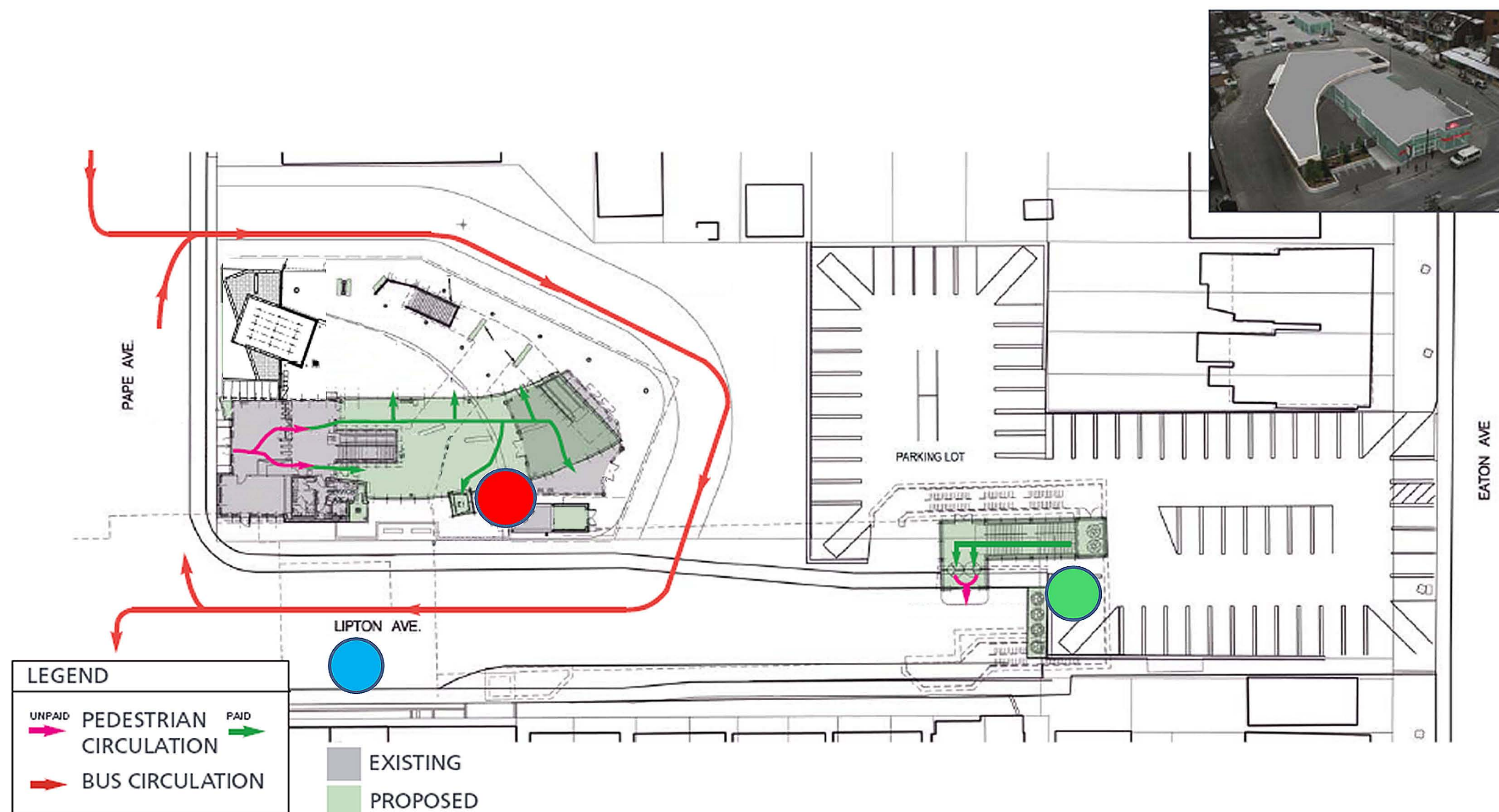
# Construction Challenges

## Found conditions:

- Oil and salt found in excavated soils necessitated separation and removal;
- Found previously unknown underground concrete and steel structures; and
- Existing water main condition – breaks, repairs and replacement.

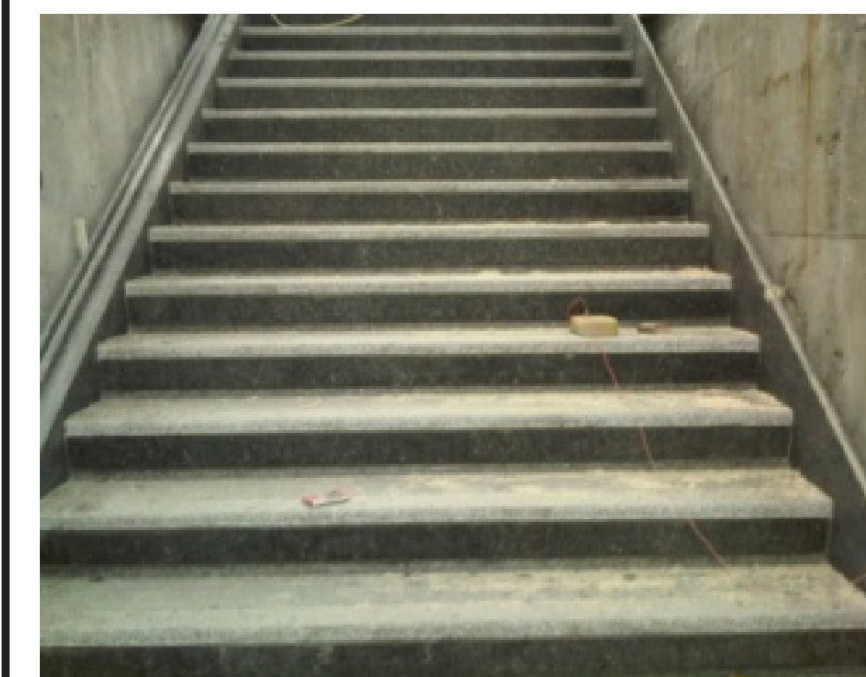


# Construction Areas

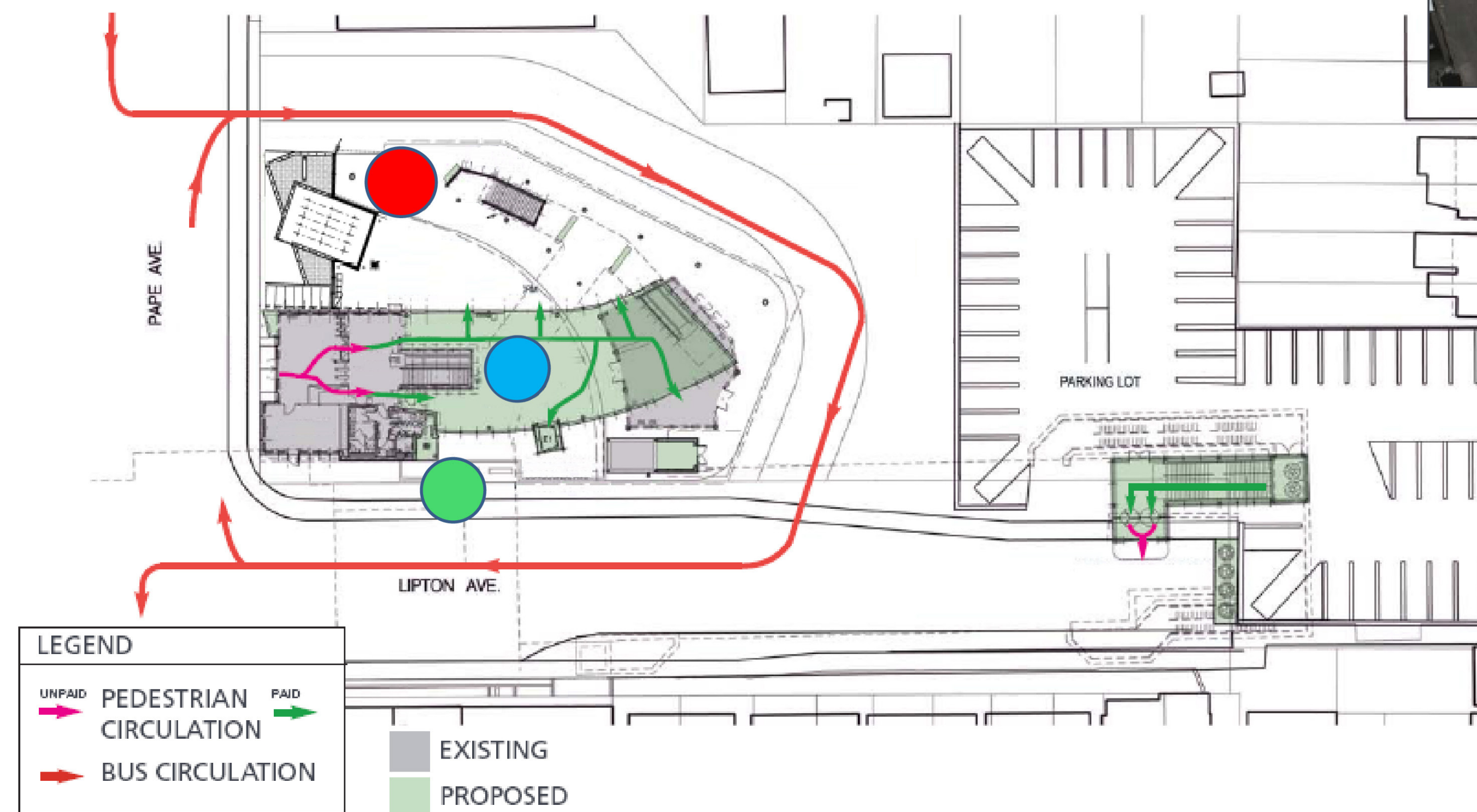




# Construction Areas



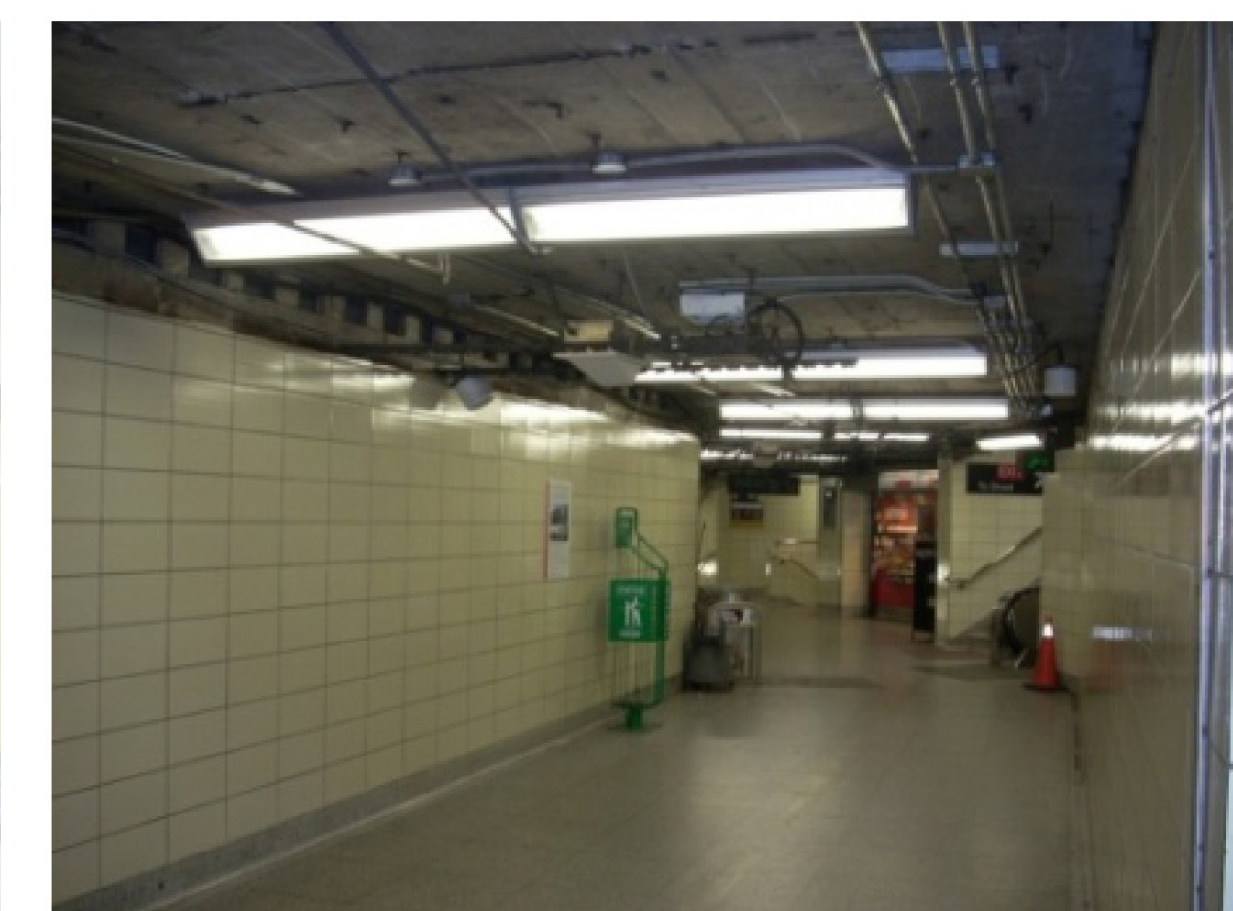
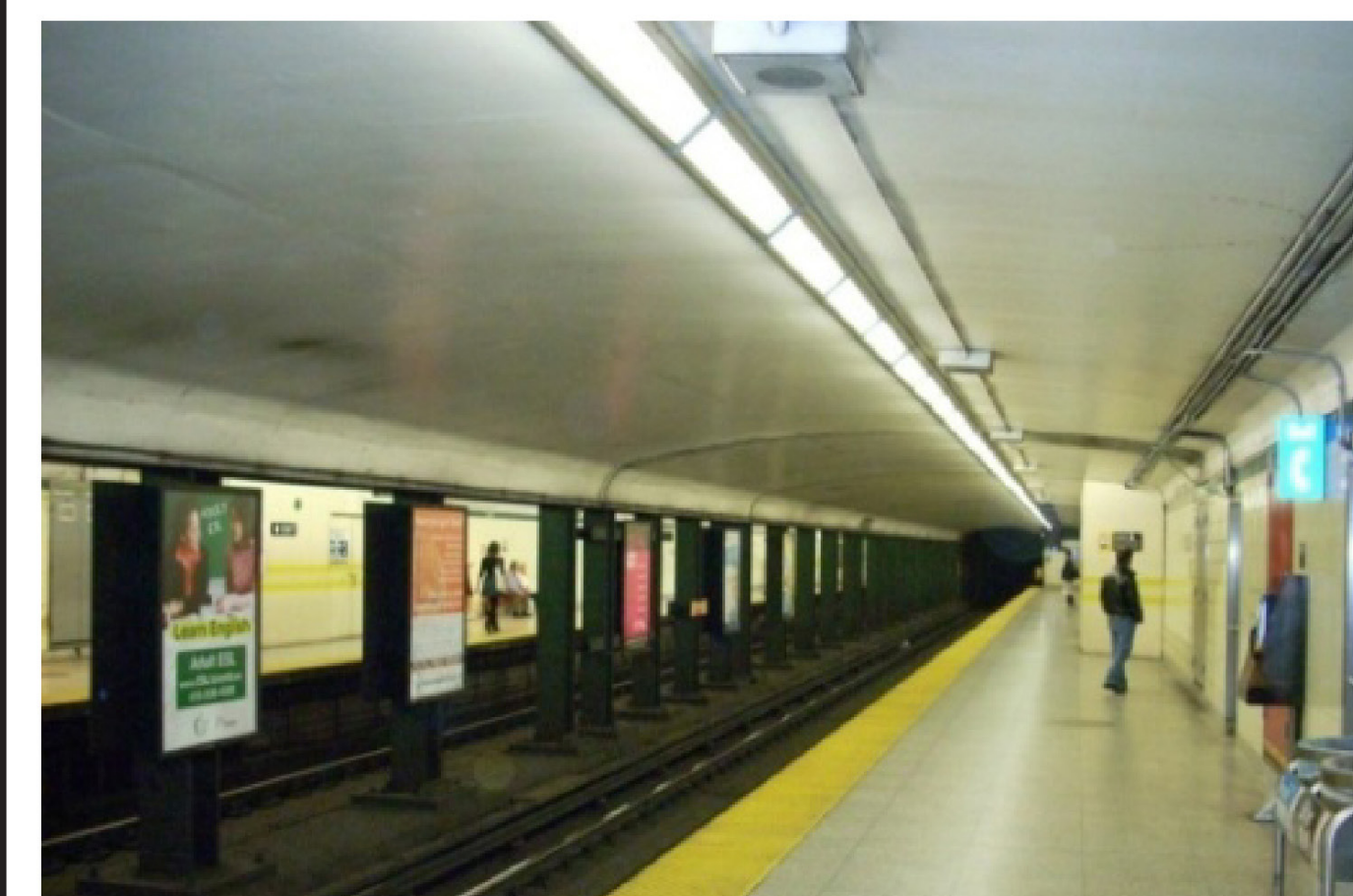
**●**  
**Stairs Enclosure and New Stairs Finishes**



**●**  
**Steel Framing for Extended Station Structure**



**●**  
**Service Installations, Walls and Slab for Extended Station Area**



**New Lighting at All Levels**



# Next Steps Lipton Ave Reinstatement

## By end of 2012:

- **South side of Lipton Avenue between 733 Pape and # 5 Lipton:**
  - Complete construction of new elevator structure (south side) under decking and reinstate Lipton Ave.
- **East end of Lipton Avenue between #15 and #21A Lipton:**
  - Complete construction of underground 2nd exit side structure (south side) under decking and reinstate Lipton Ave.
- **North side of Lipton Avenue adjacent to Station Building:**
  - Complete new underground concourse connection between E1 and E2 and reinstate Lipton Ave.



# Next Steps Station

## By end of 2012:

- Relocation of Tim Hortons from temporary trailer to station; and
- Installation of glass enclosure for extended station bus waiting area.

## By Fall 2013:

- Installation of new porcelain wall finishes and integrated artwork at all station levels;
- Installation of new floor finishes at street and concourse levels;
- Construct Second exit building and Elevator E1;
- Commission Elevators and Second exit facility;
- Installation of new cool roof;
- Installation of new easier access fare gate;
- Completion of station stair finishes;
- Construction and completion of bicycle parking; and
- Landscaping.



TORONTO TRANSIT COMMISSION

# Pape Station Modernization



**For more information, please contact:**  
**Devin Horne**  
**TTC Community Liaison Officer**  
**416-397-8696**  
**[devin.horne@ttc.ca](mailto:devin.horne@ttc.ca)**