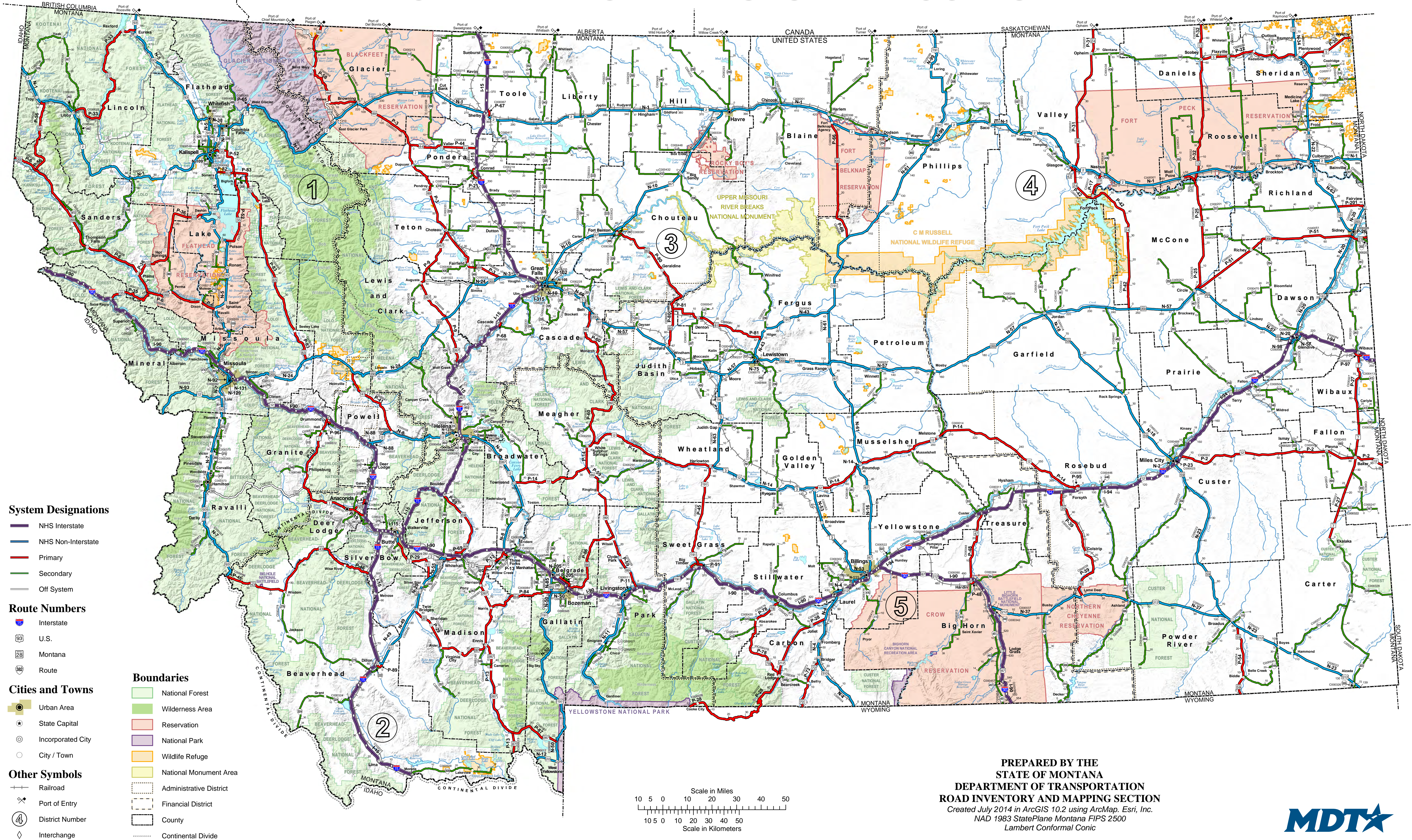


# MONTANA HIGHWAY SYSTEM ROUTES



### System Designations

- NHS Interstate
- NHS Non-Interstate
- Primary
- Secondary
- Off System

### Route Numbers

- Interstate
- U.S.
- Montana
- Route

### Cities and Towns

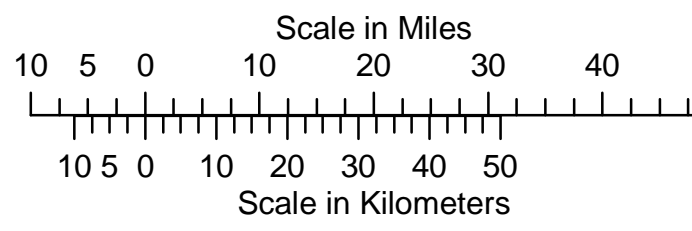
- Urban Area
- State Capital
- Incorporated City
- City / Town

### Other Symbols

- Railroad
- Port of Entry
- District Number
- Interchange

### Boundaries

- National Forest
- Wilderness Area
- Reservation
- National Park
- Wildlife Refuge
- National Monument Area
- Administrative District
- Financial District
- County
- Continental Divide



PREPARED BY THE  
 STATE OF MONTANA  
 DEPARTMENT OF TRANSPORTATION  
 ROAD INVENTORY AND MAPPING SECTION  
 Created July 2014 in ArcGIS 10.2 using ArcMap. Esri, Inc.  
 NAD 1983 StatePlane Montana FIPS 2500  
 Lambert Conformal Conic

