

Peterborough Facts and Figures

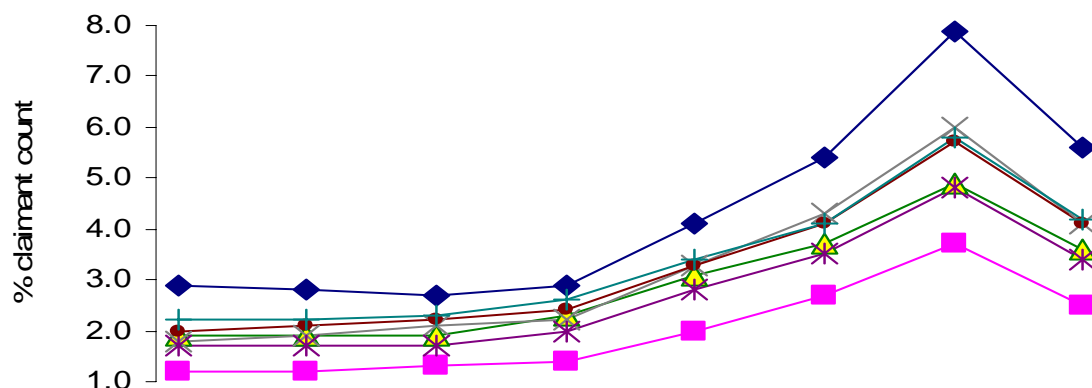


Theme: Economic – Unemployment (Claimant Count)

Title: District Level Unemployment

Sheet Number: U1.1

Unemployment Rate (claimant count)



	Jan-08	Apr-08	Jul-08	Oct-08	Jan-09	Apr-09	Jul-09	Oct-09
◆ Peterborough	2.9	2.8	2.7	2.9	4.1	5.4	7.9	5.6
■ Cambridgeshire*	1.2	1.2	1.3	1.4	2.0	2.7	3.7	2.5
▲ Lincolnshire*	1.9	1.9	1.9	2.3	3.1	3.7	4.9	3.6
× Northamptonshire	1.8	1.9	2.1	2.2	3.3	4.3	6.0	4.1
* East of England	1.7	1.7	1.7	2.0	2.8	3.5	4.8	3.4
● East Midlands	2.0	2.1	2.2	2.4	3.3	4.1	5.7	4.1
+ UK	2.2	2.2	2.3	2.6	3.4	4.1	5.8	4.2

Commentary

The unemployment rate in all areas rose steadily between Oct 08 and July 09 but has decreased sharply between July 09 and Oct 09.

The Oct 09 level for all areas is broadly the same as the April 09 level

During Jan-08 – Oct 09 the rate for Peterborough has been consistently higher than the UK rate.

The rate in Cambridgeshire* remains the lowest of all the areas and the rate for Peterborough has remained the highest of all the areas.

Notes

*excludes unitary authorities in former counties

Rate records - % of working age population Table 6.18 Economic and Labour Market Review

Peterborough Facts and Figures



Theme: Economic – Unemployment (Claimant Count)

Title: District Level Unemployment

Sheet Number: U1.1

Peterborough Facts and Figures

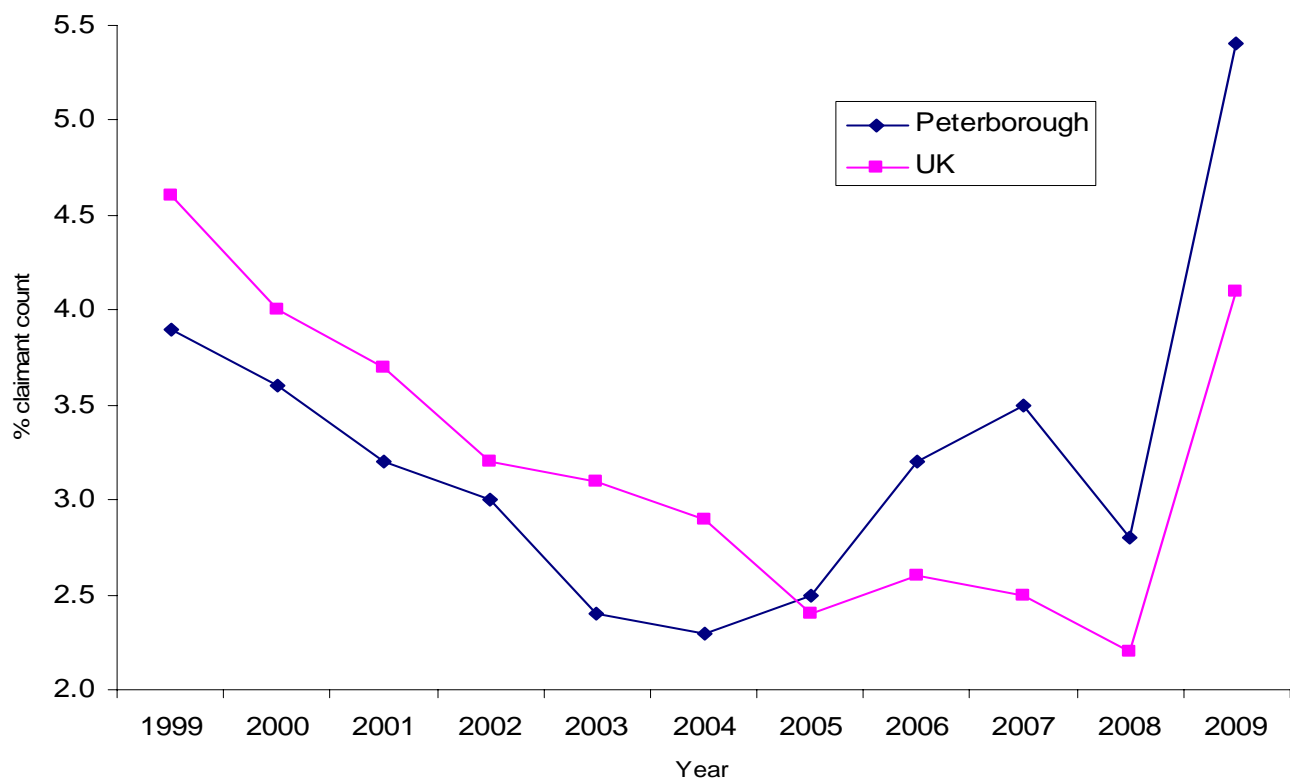


Theme: Economic – Unemployment (Claimant Count)

Title: District Level Unemployment

Sheet Number: U1.1

Unemployment Data at April



Commentary

Between 1999 and 2004 there was a steady decline in the rate of unemployment for both Peterborough and the UK – with the UK rate being the higher of the two. In April 2005 the rate for Peterborough at 2.5% was slightly higher than that for the UK at 2.4%. However since then the rate for Peterborough has been considerably higher than the rate for the UK. The 2008 rate for the UK is the lowest for the UK in the ten year period. In 2009 the unemployment rate for both Peterborough and the UK increased to over 4% - being 5.4% and 4.1% respectively.

Source

ONS Labour Market Trends Table F12 and Table 6.18 Economic and Labour Market Review