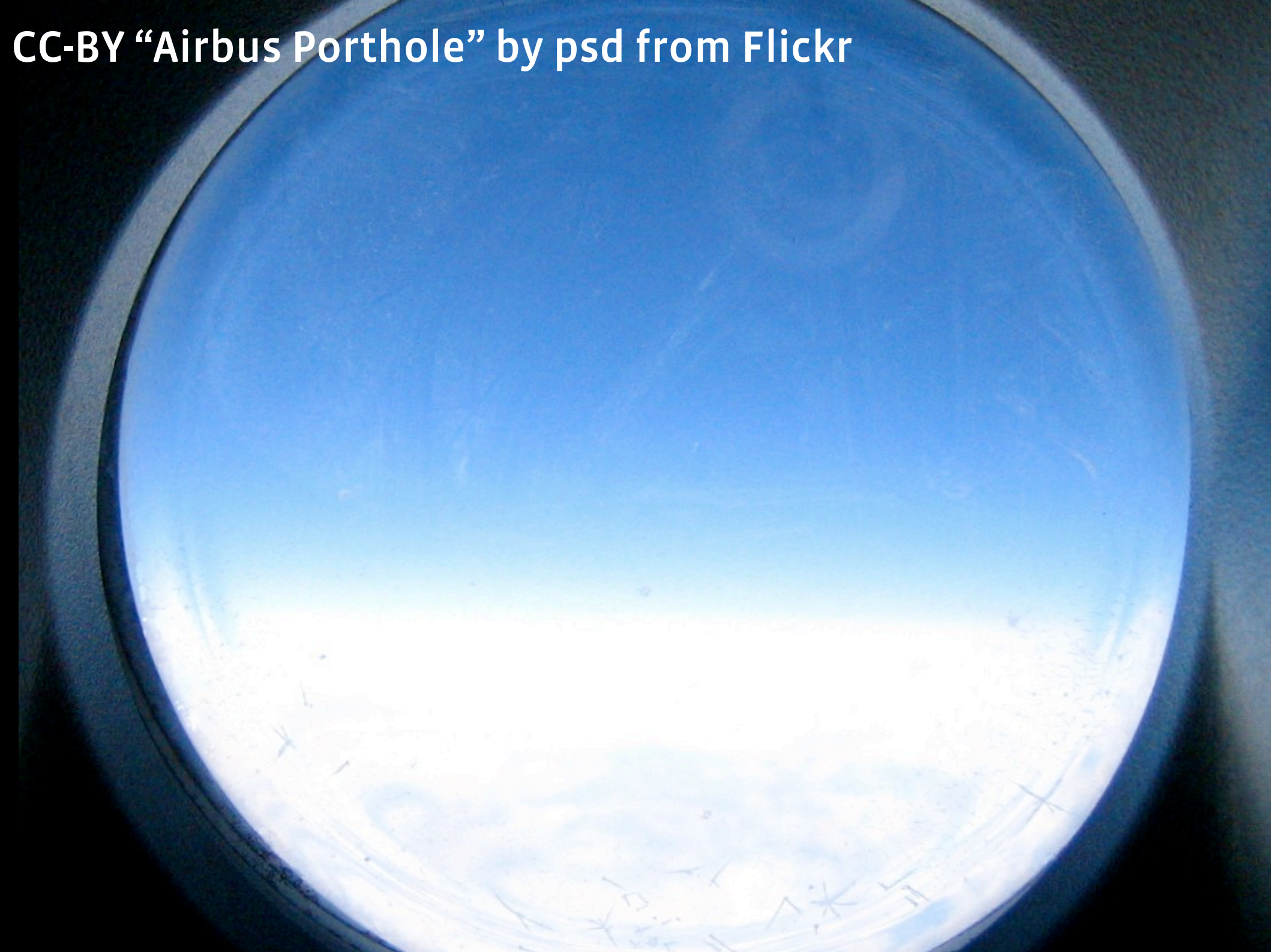


Porting to Moblin 2.0 and beyond



Rob Bradford

CC-BY "Airbus Porthole" by psd from Flickr



How to port to Moblin 2.0.

!

!

**How to plan for
portability.**

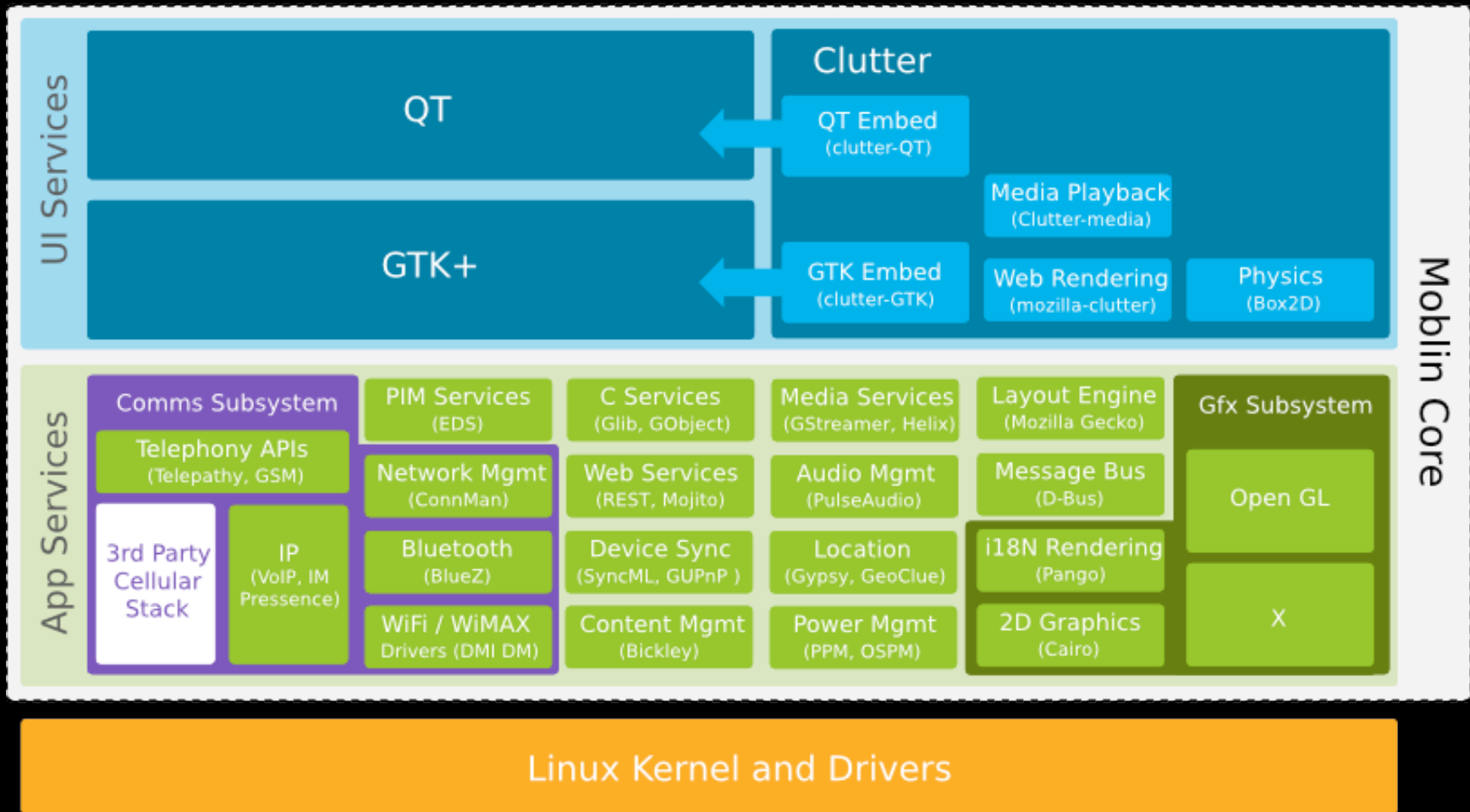
**And some specific
gotchas.**

!

!

**Moblin 2.0 Core is
(GNOME Mobile)++**

Platform Specific UI



**GNOME 2.26,
Clutter 1.0,
Xorg 7.5,
Kernel 2.6.29.**

Anticipate the tip.
(At least the next stable release.)



CC-BY-SA “ballpen macro” by nick kulas from Flickr

**Hildon → Core GNOME
technologies
Orbit → DBUS**

**Modern, standards
compliant desktop
apps are ...**

!

!

**...95% of the way to
being Moblin apps.**

Bonus technologies

- Bickley – media management,
- Mojito - “social” web services integration,
- GUPnP – Universal Plug 'n' Play
- GeoClue / Gypsy – location services

**So you want to
build an application
for ...**

!

!



CC-BY "Acer Aspire One Unboxing 11" by wstryder from Flickr



CC-BY “Ford Mustang on Felixstowe beach” by stevoarnold from Flickr



CC-BY "Get Me The Commisioner" by Joe Shlabotnik from Flickr



CC-BY "Frigidaire electric refrigerator" by Frankie Roberto from Flickr

**Try to be vertical
agnostic.**

!

!

**Code for portability:
use MVC, OOP and
other TLAs.**

**80% should be
generic, 20% should
be specific.**

!

!

UI design should be
per vertical.

Input

A black and white photograph of a hand pressing a key on a keyboard. The key is in sharp focus, while the surrounding keys and the hand are blurred. The word "Input" is overlaid in white text on the left side of the image.

CC-BY-SA "Descending Memories" by bogenfreud from Flickr

Touchscreen?

Touchpad/mouse?

Hardware buttons?

Voice?

!

!

**Compromise
between accuracy
and convenience.**

!

!

Easily portable?



Gotchas:





Output

CC-BY "Old Television" by Beige Alert from Flickr

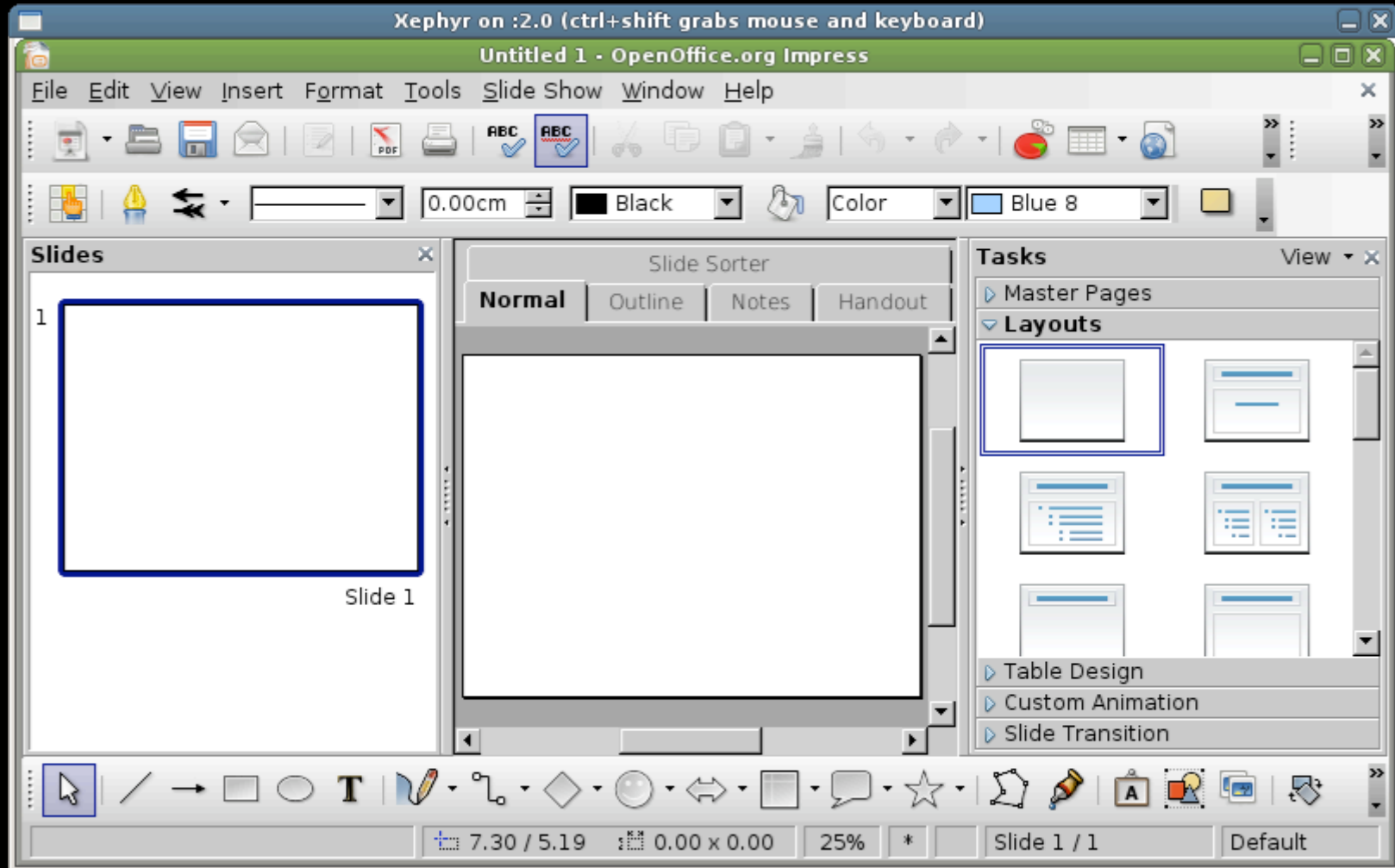
RGB Monitor/Receiver

Screen size?
Resolution?
Clarity?

!

!

Impress at 800x480



Dates at 1024x800

Xephyr on :2.0 (ctrl+shift grabs mouse and keyboard)

Thu, 2009-04-02 - Dates

Calendar View Help

	Monday	Tuesday	Wednesday	Thursday	Friday	Saturday	Sunday
01:00	30	31	1	2	3	4	5
02:00							
03:00							
04:00							
05:00							
06:00							
07:00							
08:00							
09:00							
10:00							
11:00							
12:00							
13:00							
14:00							
15:00							
16:00							
17:00							
18:00							
19:00		FW: OpenSource PDT					
20:00							
21:00							
22:00							
23:00							

New Edit Delete Today

**Desktop UIs
perform poorly at
MID sizes ...**

!

!

**... MID/phone Uis
perform badly at
netbook sizes...**

Fast boot

!

!

**Think hard about
whether you need
that...**

!

!

**init script?
autostarted service?
(DBUS activated
doodah?)**

!

!

... you probably
don't.

!

!

**Check with a
bootchart.**

!

!



CC-BY-SA "Light bulb" by akeg from Flickr

**Think carefully
about power usage.**

!

!

**Avoid excessive
wakeups.**

!

!

Powertop:

```
rob@poseidon: ~
PowerTOP version 1.11      (C) 2007 Intel Corporation

Cn          Avg residency          P-states (frequencies)
C0 (cpu running)      ( 2.7%)          1.67 Ghz      0.0%
polling             0.0ms ( 0.0%)          1333 Mhz      0.0%
C1 halt            0.0ms ( 0.0%)          1000 Mhz      100.0%
C2              3.6ms (65.4%)
C3                2.5ms (31.9%)

Wakeups-from-idle per second : 308.2      interval: 3.0s
no ACPI power usage estimate available

Top causes for wakeups:
 35.6% (110.0)      <interrupt> : uhci_hcd:usb2, yenta, i915@pci:00
 16.2% ( 50.0)      <interrupt> : extra timer interrupt
 12.4% ( 38.3)      epiphany-browse : futex_wait (hrtimer_wakeup)
 11.2% ( 34.7)      soffice.bin : schedule_hrtimer_timeout_range (hrtimer
_wakeup)

Q - Quit  R - Refresh
```

Questions?

