

## A1(M) Ferrybridge to Hook Moor Open to Traffic - January 2006

The Highways Agency is planning to open the southern section of the new A1 motorway between Darrington and Hook Moor in January 2006.

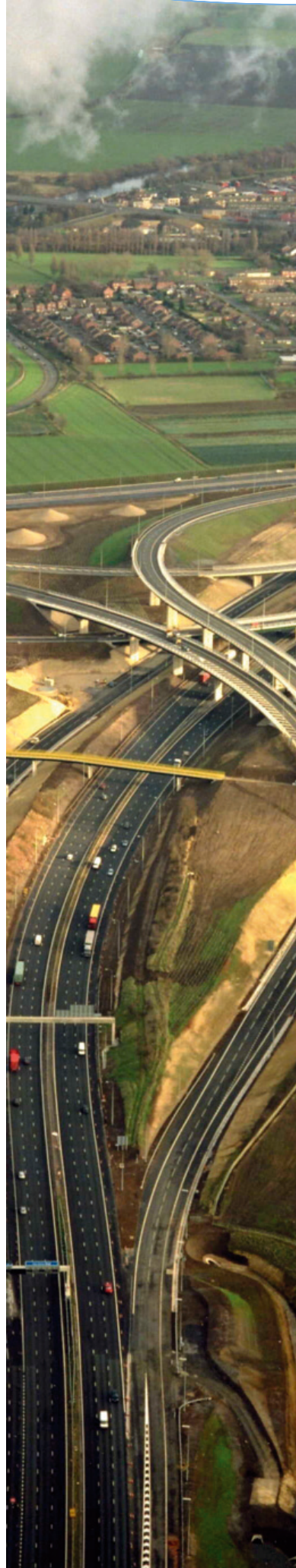
This will affect traffic as follows:-

- A1 northbound traffic will join the new motorway at Darrington to travel **north**
- A1(M) southbound traffic will continue **south** on the new motorway and the temporary connection from the new A1(M) motorway to the old A1 at Brotherton will be removed
- the new Holmfield Interchange will be open (M62 Junction 32A / A1(M) Junction 41) for the following movements
  - A1(M) southbound to M62 both east and west
  - M62 westbound to A1(M) northbound
  - A1(M) northbound to M62 westbound
  - M62 eastbound to A1(M) both north and south
- A1 northbound traffic heading to Hull will continue to use M62 Junction 33
- local traffic from the south to destinations such as Knottingley, Ferrybridge and Brotherton will use the A162.
- the old A1 will be closed north of the A162 for three months while changes are made to the existing carriageway and new roundabouts are constructed
- local traffic from the north to Brotherton and Byram will leave the A1(M) at Junction 42 and use the A63/A162.

Some lane restrictions and temporary speed limits will apply while finishing work continues. Drivers are asked to take extra care, follow the signs and observe the speed limits.

It is expected that the new road will be fully open in February 2006.

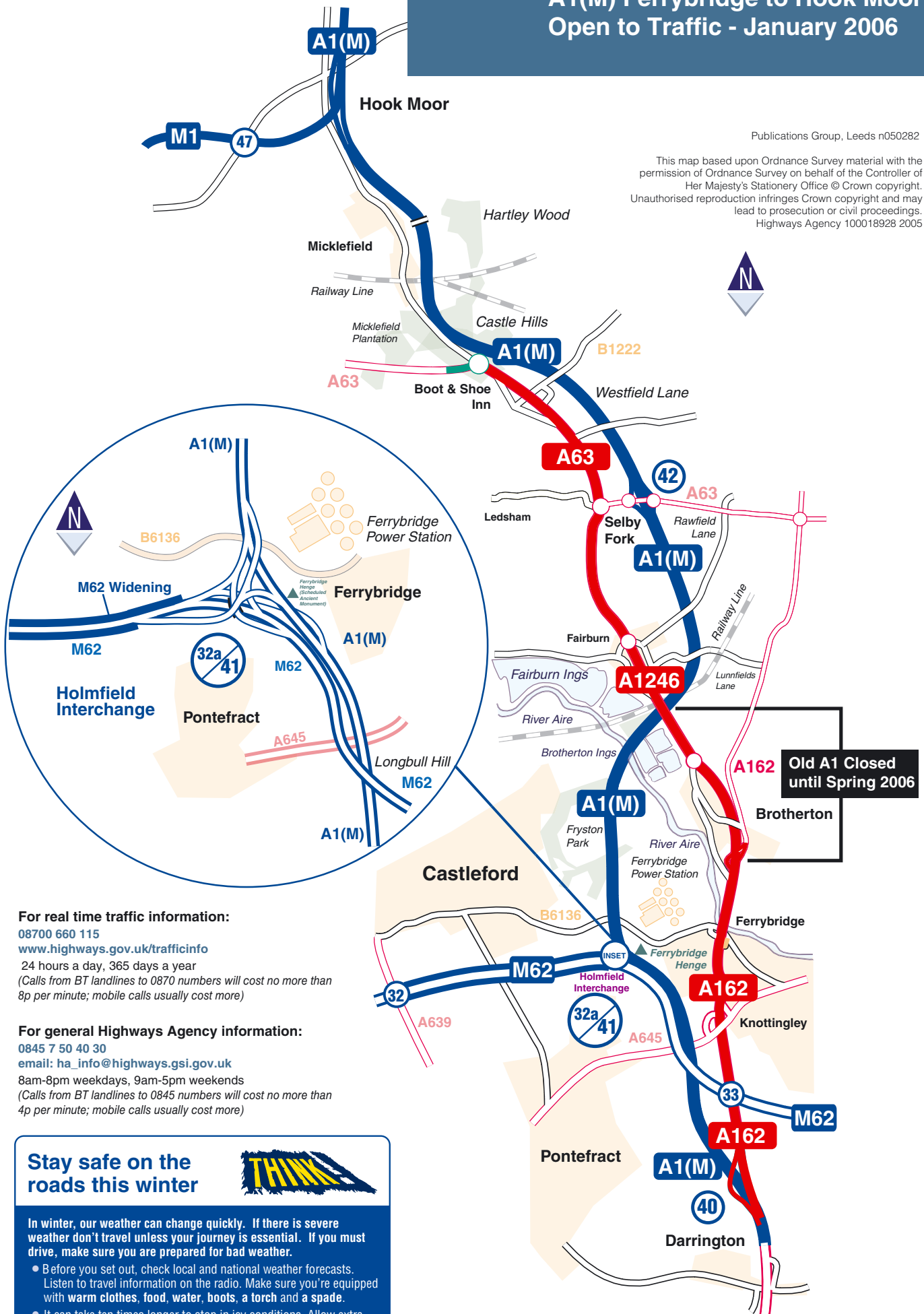
*Holmfield Interchange*



# A1(M) Ferrybridge to Hook Moor Open to Traffic - January 2006

Publications Group, Leeds n050282

This map based upon Ordnance Survey material with the permission of Ordnance Survey on behalf of the Controller of Her Majesty's Stationery Office © Crown copyright. Unauthorised reproduction infringes Crown copyright and may lead to prosecution or civil proceedings. Highways Agency 100018928 2005



### For real time traffic information:

08700 660 115  
[www.highways.gov.uk/trafficinfo](http://www.highways.gov.uk/trafficinfo)  
 24 hours a day, 365 days a year  
 (Calls from BT landlines to 0870 numbers will cost no more than 8p per minute; mobile calls usually cost more)

### For general Highways Agency information:

0845 7 50 40 30  
 email: [ha\\_info@highways.gsi.gov.uk](mailto:ha_info@highways.gsi.gov.uk)  
 8am-8pm weekdays, 9am-5pm weekends  
 (Calls from BT landlines to 0845 numbers will cost no more than 4p per minute; mobile calls usually cost more)

## Stay safe on the roads this winter



In winter, our weather can change quickly. If there is severe weather don't travel unless your journey is essential. If you must drive, make sure you are prepared for bad weather.

- Before you set out, check local and national weather forecasts. Listen to travel information on the radio. Make sure you're equipped with warm clothes, food, water, boots, a torch and a spade.
- It can take ten times longer to stop in icy conditions. Allow extra room to slow down and stop.

Remember that tiredness kills. Take regular breaks from driving.