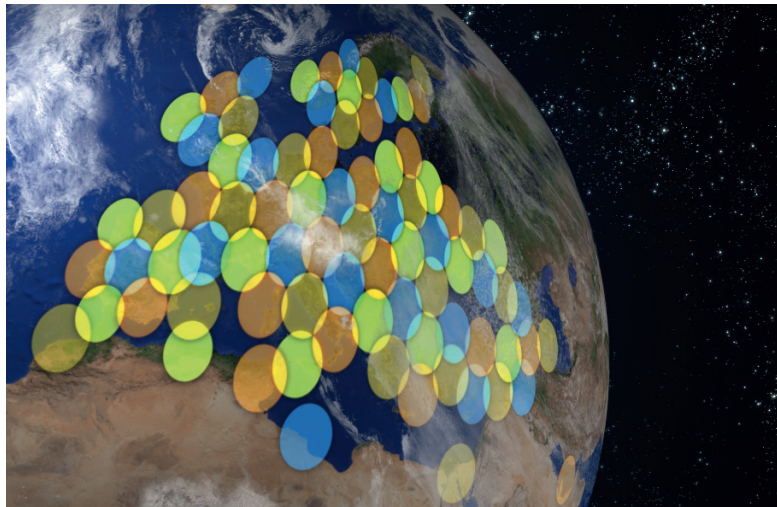


# REVOLUTIONARY KA-SAT TECHNOLOGY

ENABLES A NEW GENERATION OF IP SERVICES



82 spotbeam of KA-SAT

- The biggest High-Throughput Satellite in the sky today with 70Gbps capacity
- Launched December 2010, entry into service on May 2011
- Pan-European IP network: eight operational and two hot standby backup gateways linked by a fibre ring to major European PoP
- Covering all Europe and the main populated areas in the Mediterranean Basin

**KA-SAT opens an incredible new era for data and video solutions via satellite for B2B markets**

## ABOUT EUTELSAT

With capacity commercialised on 26 satellites that provide coverage over the entire European continent, as well as the Middle East, Africa, India and significant parts of Asia and the Americas, Eutelsat is one of the world's three leading satellite operators in terms of revenues. At 31 March 2011, Eutelsat's satellites were broadcasting more than 3,800 television channels to over 200 million cable and satellite homes in Europe, the Middle East and North Africa.

The Group's satellites also serve a wide range of fixed and mobile telecommunications services, TV contribution markets, corporate networks, and broadband markets for Internet Service Providers and for transport, maritime and in-flight markets.

Eutelsat's broadband subsidiary, Skylogic, markets and operates access to high speed internet services through teleports in France and Italy that serve enterprises, local communities, government agencies and aid organisations in Europe, Africa, Asia and the Americas.

Headquartered in Paris, Eutelsat and its subsidiaries employ nearly 661 commercial, technical and operational employees from 28 countries.

[www.eutelsat.com](http://www.eutelsat.com)

## ABOUT SKYLOGIC

Skylogic, fully owned subsidiary of Eutelsat based in Turin (Italy), provides value added services in the EMEA and the Americas. Skylogic sells KA-SAT professional services via distributors around Europe. Skylogic delivers a complete portfolio of digital satellite solutions, including custom solutions, through a network of excellent distributors and commercial partners. Highly qualified personnel and advanced technology enable Skylogic to offer even turnkey global network services.

### CONTACT

E-mail: [skylogic@skylogic.it](mailto:skylogic@skylogic.it)

Tel : +39 011 55 85 400

[www.skylogic.com](http://www.skylogic.com)

May 2011

Photos © Getty Images / art direction & illustrations - Pierre Berget (pierre@210x297.com)



# KA-SAT B2B SERVICES

A new generation of satellite IP services

# PROFESSIONAL DATA NETWORK

HIGH-THROUGHPUT CONNECTIVITY SOLUTION FOR ENTERPRISES AND INSTITUTIONS IN EUROPE AND THE MEDITERRANEAN BASIN

## FAST

Connections up to 50Mbps down, and 20 Mbps up

## EVERYWHERE

Over all Europe and the Mediterranean Basin

## COST EFFECTIVE

Competitive price of terminal and service

## FLEXIBLE

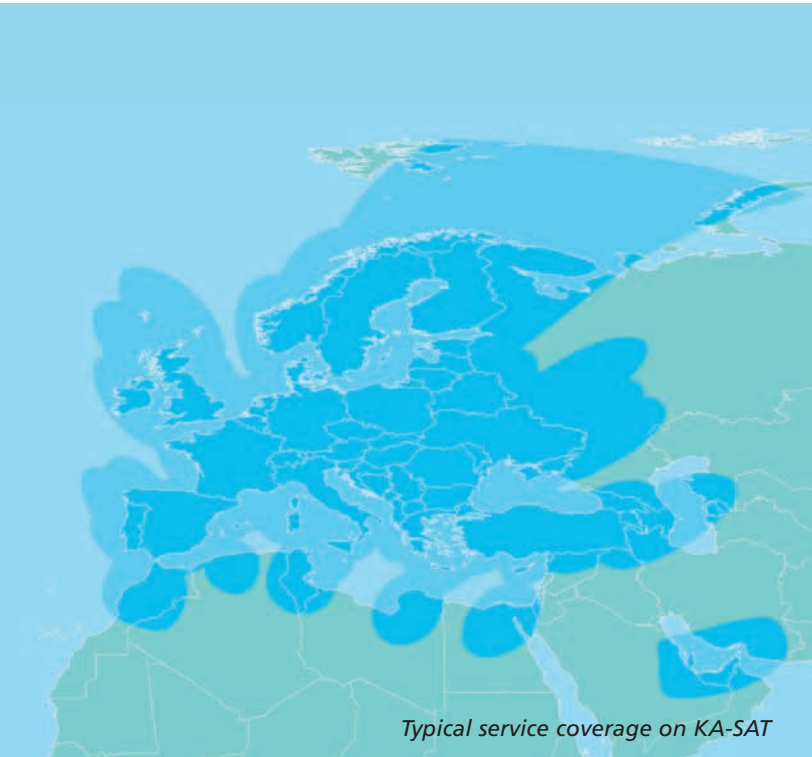
Dynamic allocation of bandwidth

## ADAPTABLE

Standard packages and customized services available

## RELIABLE

High redundancy and resiliency thanks to KA-SAT MPLS European backbone.



Typical service coverage on KA-SAT

## OUR SOLUTIONS: PACKAGES AND CUSTOMIZED SOLUTION

### TOOWAY PRO 10+

Download 10 Mbps  
Upload 4 Mbps  
Quality of service \*\*\*

Small-sized companies  
(1-10 employees)

### BUSINESS INTERNET

Download 4 Mbps  
Upload 1 Mbps  
Quality of service \*\*\*\*\*

Medium-sized companies  
(10 - 50 employees)  
working in different locations.

### BUSINESS DATA

Download 4 Mbps  
Upload 4 Mbps  
Quality of service \*\*\*\*\*

Large companies  
working with different branches

### IP-CONNECT

Ad hoc  
Dedicated capacity

Large companies  
with very specific requirements

## APPLICATIONS

- Professional Internet access
- Internet backhaul
- (LAN) Interconnection
- (LAN) Interconnect backup solutions
- M2M/SCADA
- BTS interconnection



### TERMINALS

Basic: 77 cm dish, 3W  
40 Mbps down/10 Mbps up

Advanced: 1.2m /1.0m dish, 4W,  
improved QoS, local routing  
50 Mbps down/20 Mbps up

(available. 2nd half 2011)

# PROFESSIONAL VIDEO SERVICES

INTEGRATED CONTRIBUTION SERVICES FOR SATELLITE NEWS GATHERING USING LIGHTWEIGHT KITS

## EASY

Easy to deploy and point

## SIMPLE

Automatic scheduling, internet-based booking and delivery of signal to your injection point

## TRANSPORTABLE

Lightweight kits with small antennas, simple and easy to transport everywhere

## COST EFFECTIVE

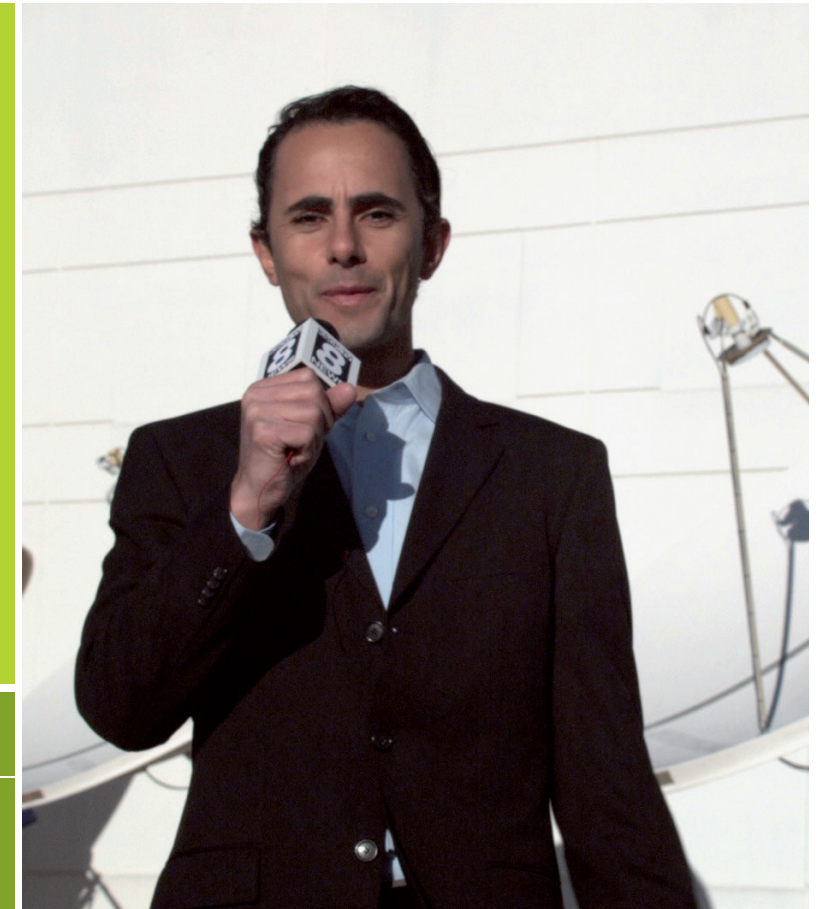
Very competitive price of equipment and service

## FAST

Very data rates for contribution in HD and 3D

## APPLICATIONS

- Satellite News Gathering using lightweight kits
- Data Gathering



# REGIONAL BROADCASTING

COST EFFECTIVE SOLUTION FOR REGIONAL/ NATIONAL BROADCASTERS AND CLOSED CORPORATE TV DISTRIBUTION FOCUSED ON SMALL REGIONS/COUNTRIES

## COST EFFECTIVE

competitive pricing for areas covered by few spots

## TURNKEY

a full service of capacity and uplink services

## TARGETED COVERAGE

only few Ka-band spots exactly to the regions you need, and a simpler management of television rights

## APPLICATIONS

- DTH solution for regional broadcaster
- Corporate TV network
- Closed TV network
- Complementing terrestrial DTT network in small countries/regions
- Distribution of digital contents (e.g. HD, 3D)