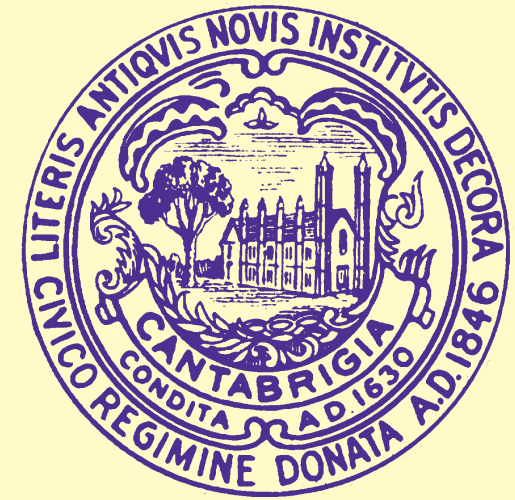


FRESH POND PARKWAY

Before & After



City of Cambridge

Community Development Department
Environmental & Transportation Planning



Before

A larger center island, splitter islands, curbs, pavement markings and sidewalks organize the space around the rotary.



After

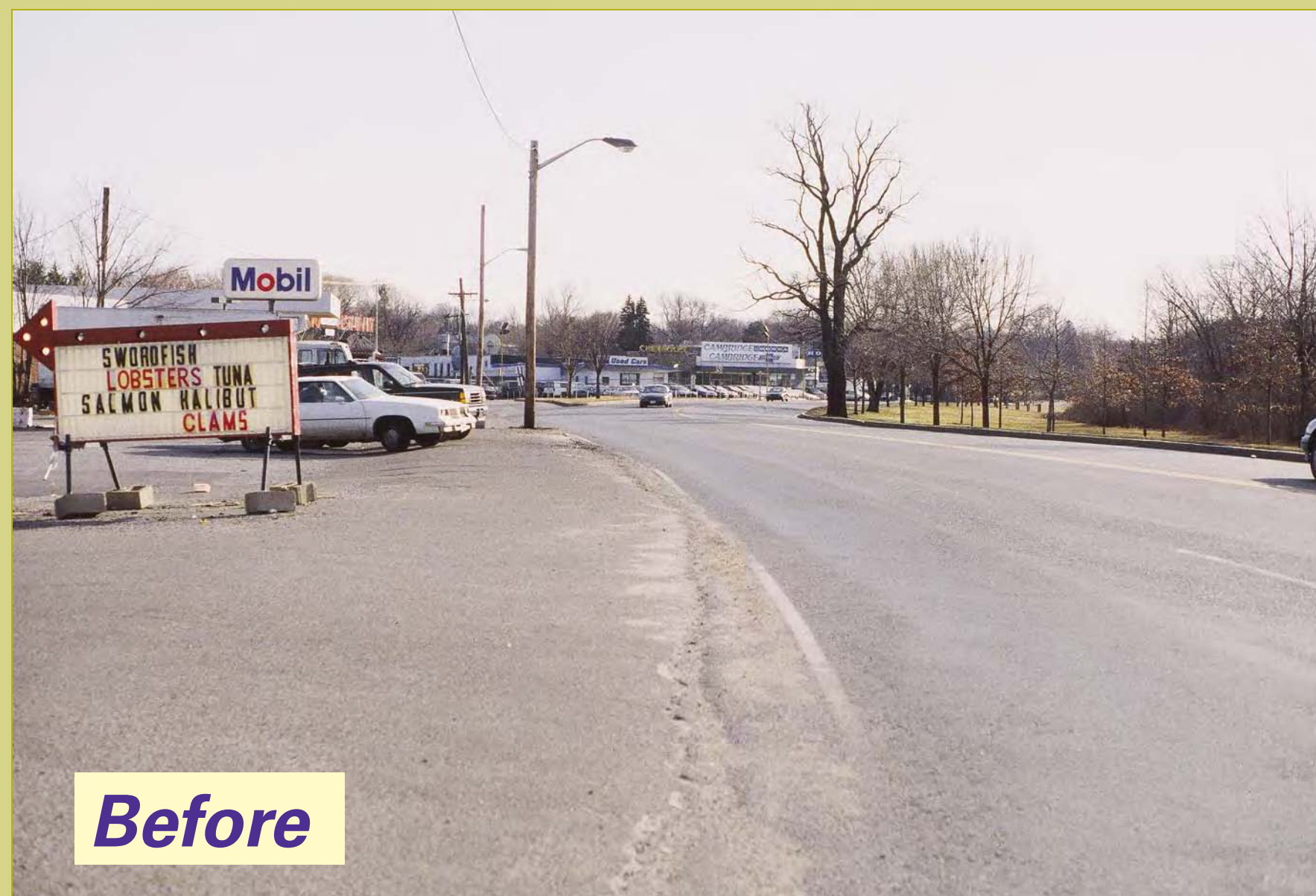


Before

By removing the slip lane from Lakeview Ave., a new pedestrian plaza was created with sidewalks, landscaping and a push-button pedestrian signal for crossing Fresh Pond Parkway.



After



Before



After

Curbing installed to define public right of way along with a generous sidewalk, lighting and landscaping.

Excess roadway space used to create a planting strip, sidewalk and two-way bicycle facility.



Before



After

Landscaped islands, signs and pavement markings encourages vehicles to yield when entering into the rotary. Bicycle path with lighting installed on the "pond" side of the roadway.



Before



After