

Get involved and have your say

The department will be consulting with property owners, businesses and the broader community to ensure their current issues and concerns are understood and to discuss potential impacts of the preferred upgrade option.

Community consultation will be open from 7 November - 2 December 2011. Public displays will be held from 10 - 27 November where the community can discuss the preferred upgrade option with the project team, ask questions and provide feedback.

Staffed displays

Venue	Date	Times
Centro Monier Village Cnr Monier Rd and Bellwood St Darra (display will be located outside Woolworths)	Thursday 10 November	3pm – 7pm
	Saturday 12 November	10am – 2pm
Brisbane Marketplace 250 Sherwood Road Rocklea	Saturday 26 November	6am – 12 noon
	Sunday 27 November	6am – 12 noon

Other displays

Information will also be on display at:

Venue	Location	Dates
Inala Library	Inala Town Centre 1 Corsair Avenue, Inala	Monday 7 October to Friday 2 December during office hours
Corinda Library	641 Oxley Road Corinda	Monday 7 October to Friday 2 December during office hours
Local State and Federal Members' offices	<ul style="list-style-type: none"> Annastacia Palaszczuk, MP for Inala Simon Finn, MP for Yeerongpilly Julie Attwood, MP for Mt Ommaney Karen Struthers, MP for Algester Bernie Ripoll, MP for Oxley 	Monday 7 October to Friday 2 December during office hours



Project timeline

2003 Key stakeholders and community engaged in the Ipswich Motorway Upgrade Planning Study (entire 19kms).	May 2009 Federal Government committed \$10 million towards project planning.	Late 2009 Project team reviewed October 2003 concept plan to develop planning option.	June 2010 Consultation with the community on the proposed planning option.	November 2011 [WE ARE HERE] Consultation with key stakeholders and community on preferred upgrade option.	Late 2011 Finalise the business case and funding submission.
----------------------------------------------------------------------------------------------------------------------	----------------------------------------------------------------------------------------	-------------------------------------------------------------------------------------------------	--------------------------------------------------------------------------------------	---------------------------------------------------------------------------------------------------------------------	------------------------------------------------------------------------

In 2003, a concept design was developed for the entire length of the Ipswich Motorway corridor from Dinmore to Rocklea.

A planning option was released in June 2010 for the upgrade of Darra to Rocklea and the community was invited to provide their feedback.

The project team reviewed feedback received as part of the consultation on the 2010 planning option and has now developed a preferred upgrade option for this section of motorway.

Where to from here?

As part of the study's ongoing consultation program, the preferred upgrade option will be available for viewing by the community at a series of public displays commencing in November 2011.

Any feedback received as part of this consultation process will be used to finalise the business case submitted to the Australian Government.

Transforming the Western Corridor

The Western Corridor has been highlighted as a high growth area for future industrial, commercial and residential development.

To meet this demand the department is currently planning a number of transport projects in the area.

In 2003 the department started planning the upgrade of the entire 19km length of the Ipswich Motorway. Since then, the motorway has undergone significant staged improvements as federal government funding became available.

The seven kilometre section from Darra to Rocklea is the final part of the Ipswich Motorway to be upgraded.

The Ipswich Motorway (Darra to Rocklea) Planning Study is funded by the Australian Government and delivered by the Department of Transport and Main Roads.

Contact us

For more information about the project, call us on our freecall number 1800 204 990*, which is staffed Monday to Friday from 8.30 am – 5.00 pm. Alternatively you can:

Visit www.tmr.qld.gov.au/darra2rocklea
Email darra2rocklea@tmr.qld.gov.au
Write to Ipswich Motorway Upgrade Project
 Darra to Rocklea
 Reply Paid 70
 Spring Hill Qld 4004

**Free call from anywhere in Australia, call charges apply for calls from mobile phones and payphones.*

TTY services: 13 36 77

Interpreter and translation services: if you require the assistance of an interpreter, please call TIS National on 13 14 50 and ask to speak to the Darra to Rocklea Upgrade project team on 1800 204 990.

Dịch vụ thông phiên dịch: nếu quý vị cần sự giúp đỡ của một thông ngôn viên, yêu cầu gọi cơ quan TIS National qua số 13 14 50 và xin được nói chuyện với tổ dự án Nâng Cấp Darra đến Rocklea (Darra to Rocklea Upgrade) ở số 1800 204 990.



Ipswich Motorway (Darra to Rocklea)

Preferred upgrade option released



The Queensland Government has released a preferred option for the upgrade of the Ipswich Motorway from the Centenary Motorway at Darra to the Granard Road interchange at Rocklea.

The preferred upgrade option balances the local community's needs with the expected future growth of the motorway by improving safety, reducing congestion and enhancing facilities for cyclists and pedestrians.

In 2010 the Department of Transport and Main Roads consulted with the community on a proposed planning option for the upgrade. As a result of community feedback received during the consultation phase and further technical and environmental investigation, a preferred upgrade option has now been developed and is enclosed for your information.

This preferred upgrade option is now available for comment and will be on display from 7 November - 2 December 2011. Your feedback will be included in the business case submitted to the Australian Government.

Get involved and have your say

The Department of Transport and Main Roads is seeking your feedback on the preferred upgrade option.

Your involvement will help shape the next stage of the project.

How?

- Visit the Darra to Rocklea project website at www.tmr.qld.gov.au/darra2rocklea.
- Complete the enclosed feedback form and mail it to the project team (a reply paid envelope can be made by folding and sealing the feedback form).
- Visit the project team at one of the staffed displays (see the 'Get involved and have your say' section for locations, dates and times).
- Email your feedback to darra2rocklea@tmr.qld.gov.au.
- Call the project information line on 1800 204 990*.



Example of dedicated cycleway



Example of completed motorway upgrade with variable speed limit signs

Benefits of the preferred upgrade option

The preferred upgrade option will:

- increase road safety
- reduce traffic congestion
- improve travel times for motorway users
- improve travel reliability
- encourage more walking and cycling.

These benefits will be achieved by:

- safer access to and from the motorway
- upgrading the motorway to six lanes
- providing better local road connectivity
- using intelligent traffic management systems
- providing improved pedestrian paths and cycleways.

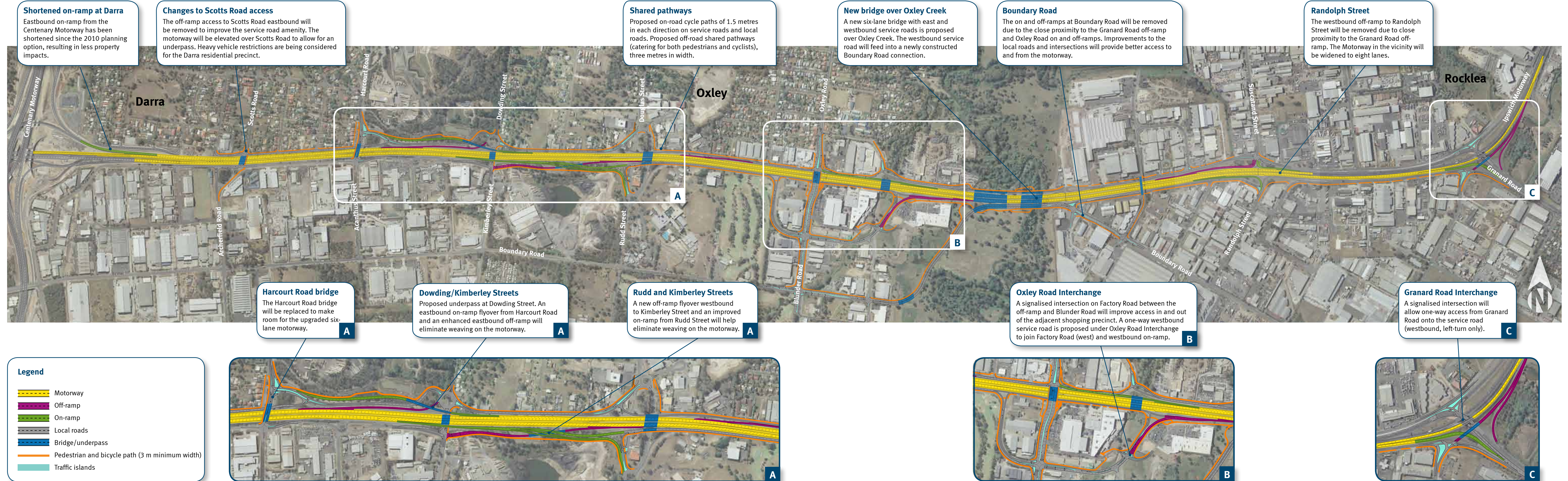
Community feedback

The department has reviewed feedback provided as part of the 2010 consultation period on the planning option for the Darra to Rocklea upgrade. This feedback has allowed the department to understand areas of concern and key issues for the local community and businesses which has informed the preferred upgrade option.

Key issue	Solution
Local traffic impacts	<ul style="list-style-type: none"> Design promotes long distance trips on the motorway. Shorter trips will be made easier on the local road network. Heavy vehicles will be discouraged from using local residential streets.
Impact on operations	<ul style="list-style-type: none"> Provide more efficient and safe access to and from the motorway. Minimise impact on local businesses. Enhance some local roads to support business operations.
Property resumptions	<ul style="list-style-type: none"> Fewer property resumptions e.g. eastbound on-ramp from Centenary Motorway. Minimise impact on potentially directly affected properties.
Safety	<ul style="list-style-type: none"> The motorway will be upgraded to comply with current safety standards. Improve sight distance to reduce congestion related incidents.
Access and ramp closures	<ul style="list-style-type: none"> Consistent with motorway standards to provide more efficient and safe access to and along the motorway. Will cater for projected increase in traffic demand in the road network.

Ipswich Motorway (Darra to Rocklea)

Preferred upgrade option



Note: Map used is from aerial photo 2009