



ROPER RIVER

River Basin Summary



Population (2006):¹ 3,364

Major Towns:¹ None

Major Rivers:² Roper River, Hodgson River, Wilton River

Surface Water Storages:^{2, 3, 4}

Largest known storages: None

No. of storages: 0

Storage capacity (ML): 0

Licensed Irrigation:

Largest areas:³ None

Number of licenses:⁵ n/a

Average annual allocation (ML):

 Since 1996-97: n/a

 Minimum: n/a

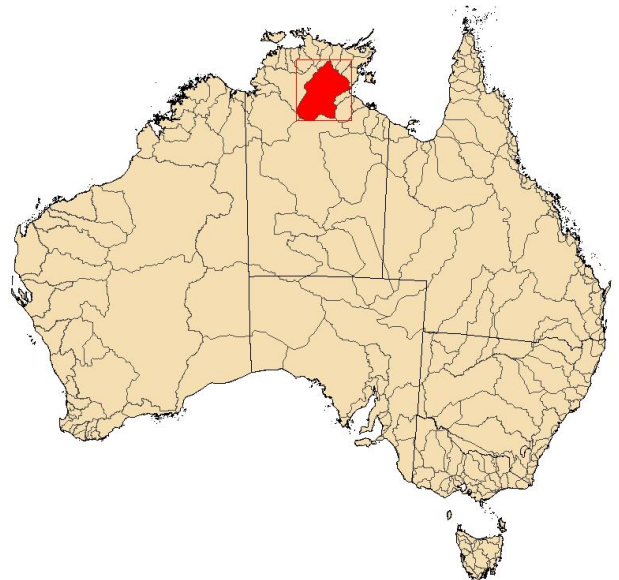
 Maximum: n/a

Average annual diversion (ML):

 Since 1996-97: n/a

 Minimum: n/a

 Maximum: n/a



Groundwater:

Number of production bores:⁷ Data being compiled

Recharge rate (mm/year):⁸ Data being compiled

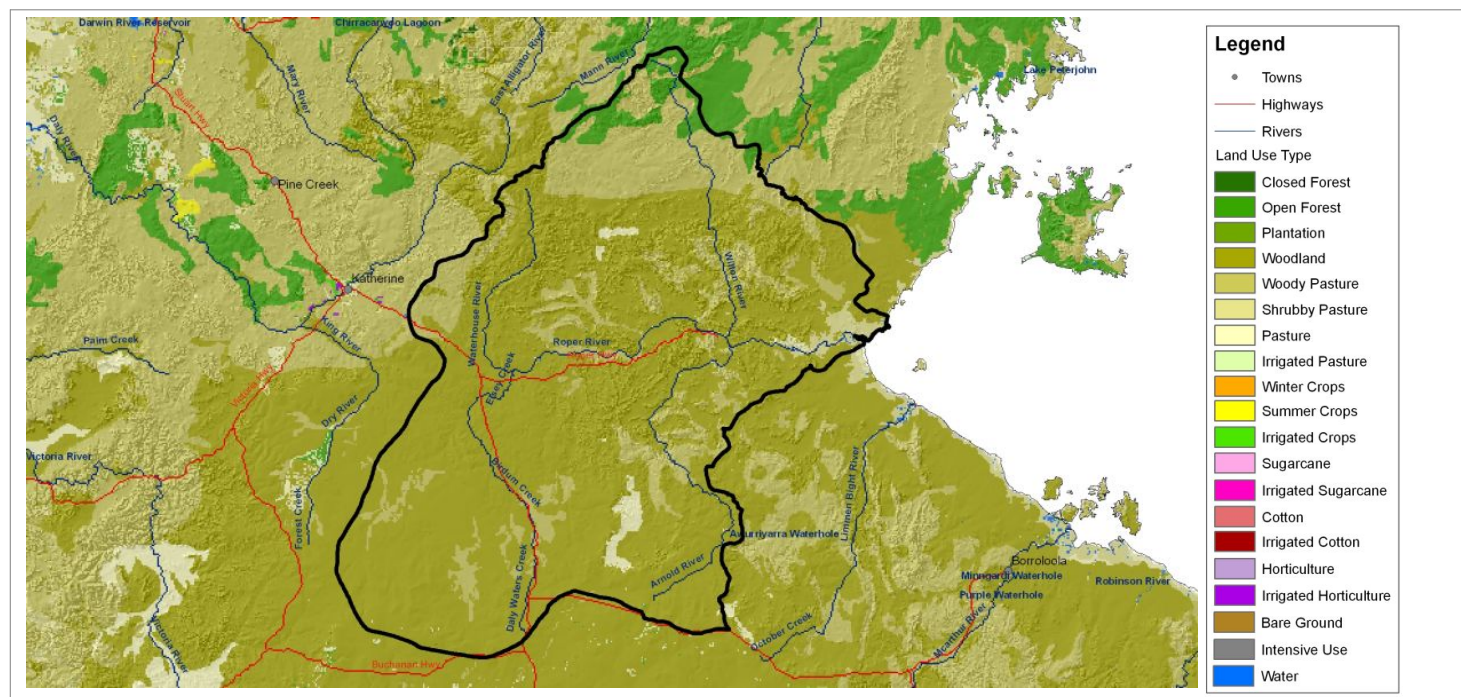
Yield (ML/year):⁸ Data being compiled

Extraction (ML/year):⁷ Data being compiled

Rainfall Reliability:

Chance of receiving average seasonal rainfall:⁸ Medium (4.5 to 5 yrs in 10)

¹ Australian Bureau of Statistics (2006); ² Geosciences Australia (1999); ³ National Land and Water Resources Audit (2000); ⁴ Australian National Committee on Large Dams (2004); ⁵ Australian National Committee - International Commission on Irrigation and Drainage (2005); ⁶ Murray Darling Basin Commission (2005); ⁷ State Agencies (2006); ⁸ Bureau of Rural Sciences (2007); ^x Incomplete



ROPER RIVER

Modelled Annual Water Balance

Land Use Type	Area (sqkm)	Precipitation (ML)	Runoff (ML)	ET (ML)	Deep drainage (ML)	Irrigation (ML)	Return flow (ML)
Closed Forest	2	1,579	46	1,512	21	0	0
Open Forest	1,894	2,276,138	248,427	1,986,694	41,018	0	0
Plantation	0	0	0	0	0	0	0
Woodland	60,183	50,267,499	4,763,596	44,661,108	842,795	0	0
Woody Pasture	15,739	15,364,437	3,111,158	11,986,047	267,231	0	0
Shrubby Pasture	749	601,390	98,593	494,241	8,556	0	0
Pasture	1,004	802,157	163,239	625,816	13,102	0	0
Irrigated Pasture	0	0	0	0	0	0	0
Winter Crops	0	0	0	0	0	0	0
Summer / Fodder Crops	0	0	0	0	0	0	0
Irrigated Crops	0	0	0	0	0	0	0
Sugarcane	0	0	0	0	0	0	0
Irrigated Sugarcane	0	0	0	0	0	0	0
Cotton	0	0	0	0	0	0	0
Irrigated Cotton	0	0	0	0	0	0	0
Horticulture	0	0	0	0	0	0	0
Irrigated Horticulture	0	0	0	0	0	0	0
Bare Ground	6	4,707	1,571	3,065	71	0	0
Intensive Use	6	4,743	1,233	3,439	72	0	0
Water	20	15,865	4,670	10,940	254	0	0
Entire Basin	79,631	69,361,078	8,392,533	59,795,425	1,173,119	0	0
NLWRA¹	79,130	n/a	5,540,000	n/a	n/a	3,351	n/a
AWRC²	81,300	n/a	5,000,000	n/a	n/a	n/a	n/a

Data Sources: Land use data sourced from the Bureau of Rural Sciences. Precipitation data sourced from the Australian Bureau of Meteorology. All other data derived from the Bureau of Rural Sciences' steady-state annual water balance model.

¹National Land and Water Resources Audit (2000); ²Australian Water Resource Council (1987); n/a = Not available

ROPER RIVER

Average Annual Water Resource Summary (GL)

Water Supply

Runoff: ¹	8,393
Transfers: ^{1, 2}	0
Groundwater Sustainable Yield: ³	569
Total:	8,961

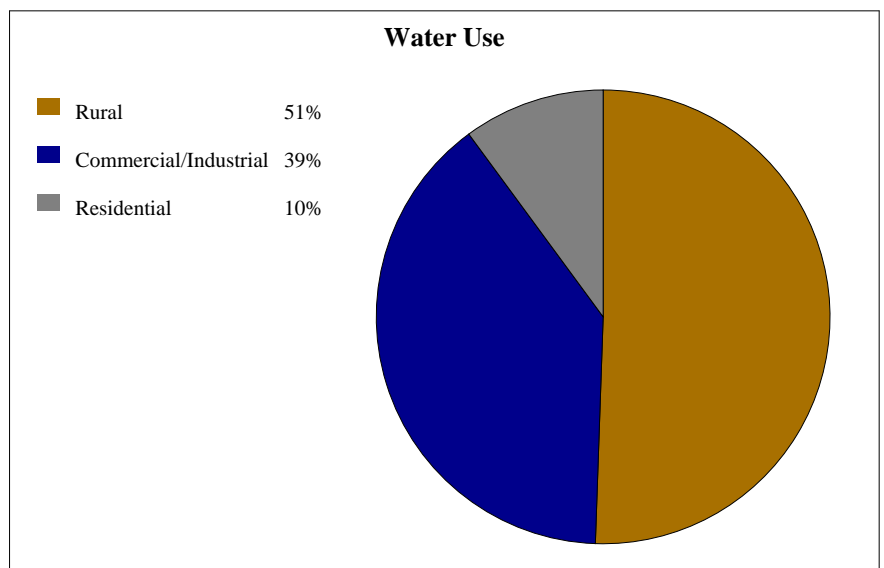
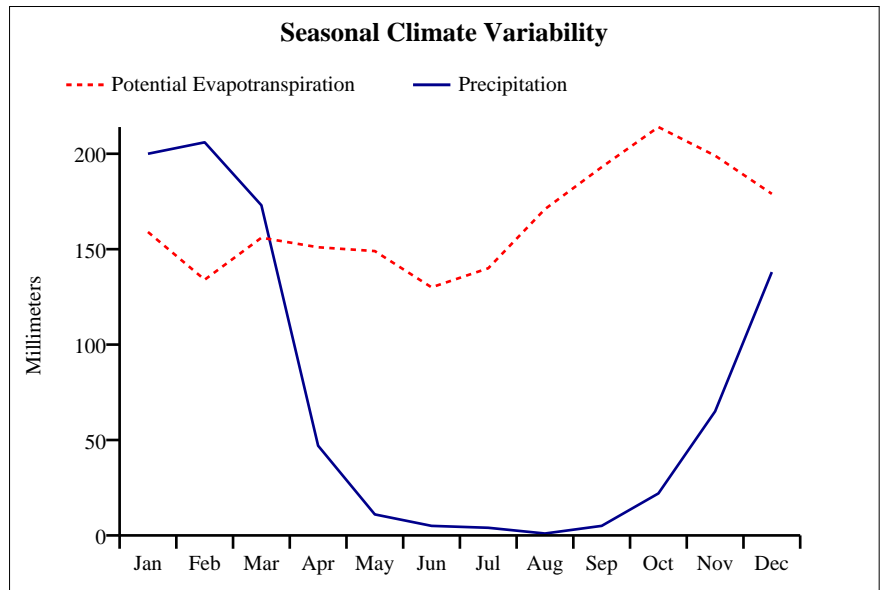
Water Use

Irrigation: ¹	0
Residential: ¹	<1
Commercial/Industrial: ^{#, 3}	2
Rural (Stock/Domestic): ³	3
Transfers: ^{1, 2}	0
Total:	5

Total Use (% of Supply): <1%

River Flows

Retained in Storage: [~]	0
Environmental Flows:	Data being compiled
Transmission Losses: [^]	2,098
Return Flows: ¹	<1
Outflow:[@]	6,293



¹Bureau of Rural Sciences (2007); ²Australian Water Resource Council (1987); ³National Land and Water Resources Audit (2000)

[#]Groundwater only; ^{*}Surface water only; [~]5% of total storage; [^]25% of runoff; ^xincomplete

[@]Surface water (supply - use - retention in storage - transmission losses + environmental flows + return flows)

n/a = Not available