



MARY RIVER (NT)

River Basin Summary



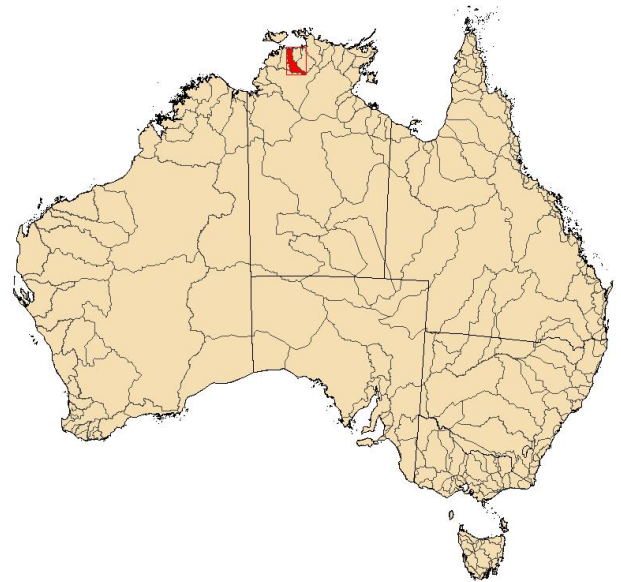
Population (2006):¹ 210
Major Towns:¹ None
Major Rivers:² Mary River, Mckinlay River, Cullen River

Surface Water Storages:^{2, 3, 4}

Largest known storages: None
 No. of storages: 0
 Storage capacity (ML): 0

Licensed Irrigation:

Largest areas:³ None
 Number of licenses:⁵ n/a
 Average annual allocation (ML):
 Since 1996-97: n/a
 Minimum: n/a
 Maximum: n/a
 Average annual diversion (ML):
 Since 1996-97: n/a
 Minimum: n/a
 Maximum: n/a



Groundwater:

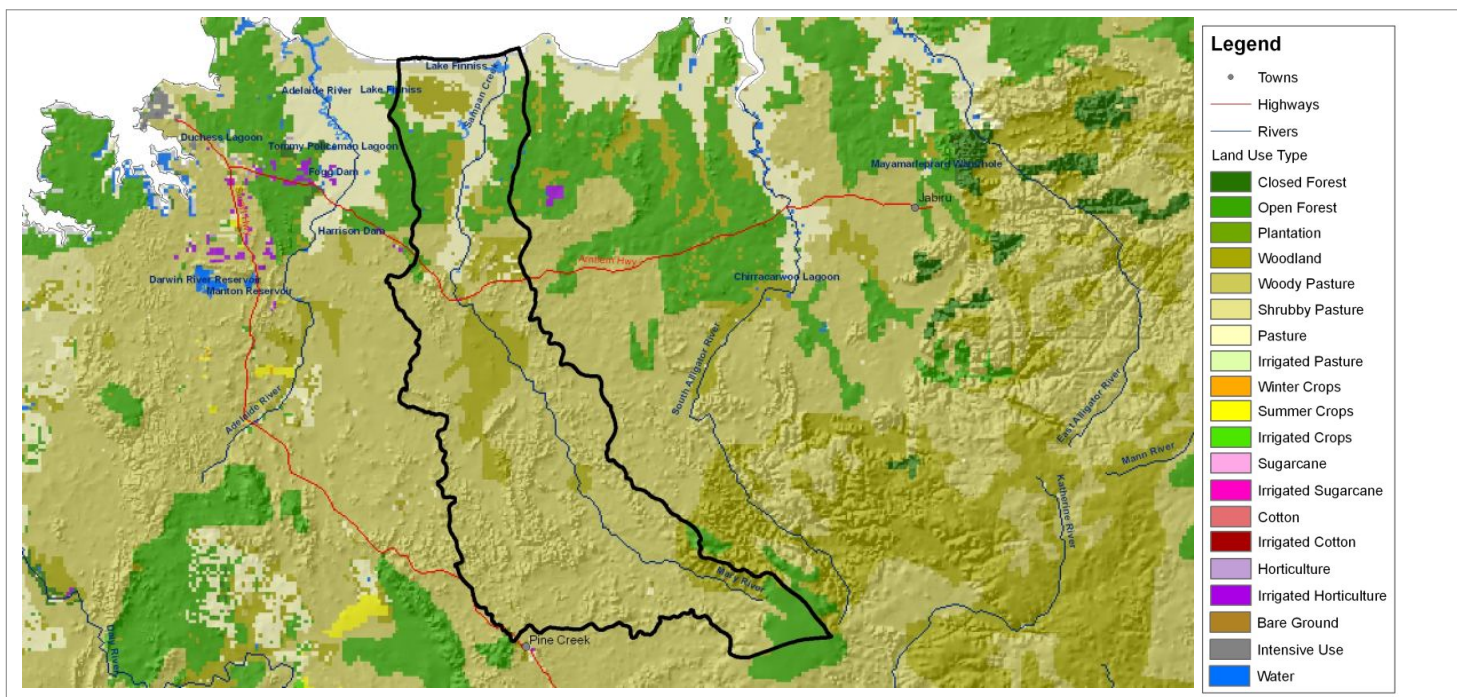
Number of production bores:⁷ Data being compiled
 Recharge rate (mm/year):⁸ Data being compiled
 Yield (ML/year):⁸ Data being compiled
 Extraction (ML/year):⁷ Data being compiled

Rainfall Reliability:

Chance of receiving average seasonal rainfall:⁸ High (>5 yrs in 10)

¹ Australian Bureau of Statistics (2006); ² Geosciences Australia (1999); ³ National Land and Water Resources Audit (2000); ⁴ Australian National Committee on Large Dams (2004); ⁵ Australian National Committee - International Commission on Irrigation and Drainage (2005); ⁶ Murray Darling Basin Commission (2005); ⁷ State Agencies (2006); ⁸ Bureau of Rural Sciences (2007); ^x Incomplete

n/a = Not available



MARY RIVER (NT)

Modelled Annual Water Balance

Land Use Type	Area (sqkm)	Precipitation (ML)	Runoff (ML)	ET (ML)	Deep drainage (ML)	Irrigation (ML)	Return flow (ML)
Closed Forest	0	0	0	0	0	0	0
Open Forest	850	1,208,285	123,848	1,064,924	19,513	0	0
Plantation	0	0	0	0	0	0	0
Woodland	1,284	1,766,030	254,601	1,484,294	27,135	0	0
Woody Pasture	5,152	6,807,780	1,350,717	5,342,517	114,546	0	0
Shrubby Pasture	112	166,011	39,221	124,631	2,158	0	0
Pasture	602	877,143	233,883	631,364	11,896	0	0
Irrigated Pasture	0	0	0	0	0	0	0
Winter Crops	0	0	0	0	0	0	0
Summer / Fodder Crops	0	0	0	0	0	0	0
Irrigated Crops	0	0	0	0	0	0	0
Sugarcane	0	0	0	0	0	0	0
Irrigated Sugarcane	0	0	0	0	0	0	0
Cotton	0	0	0	0	0	0	0
Irrigated Cotton	0	0	0	0	0	0	0
Horticulture	0	0	0	0	0	0	0
Irrigated Horticulture	1	1,394	176	1,197	21	608	18
Bare Ground	1	1,408	504	882	23	0	0
Intensive Use	0	0	0	0	0	0	0
Water	6	8,778	2,989	5,672	117	0	0
Entire Basin	8,074	10,935,013	2,005,939	8,753,665	175,409	608	18
NLWRA¹	8,060	n/a	2,180,000	n/a	n/a	3,843	n/a
AWRC²	7,770	n/a	2,400,000	n/a	n/a	n/a	n/a

Data Sources: Land use data sourced from the Bureau of Rural Sciences. Precipitation data sourced from the Australian Bureau of Meteorology. All other data derived from the Bureau of Rural Sciences' steady-state annual water balance model.

¹National Land and Water Resources Audit (2000); ²Australian Water Resource Council (1987); n/a = Not available

MARY RIVER (NT)

Average Annual Water Resource Summary (GL)

Water Supply

Runoff: ¹	2,006
Transfers: ^{1, 2}	0
Groundwater Sustainable Yield: ³	271
Total:	2,277

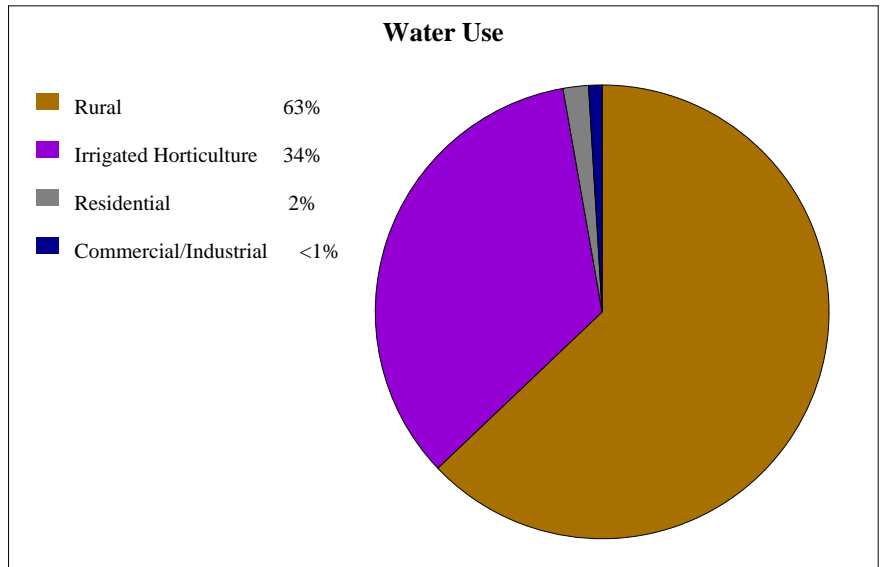
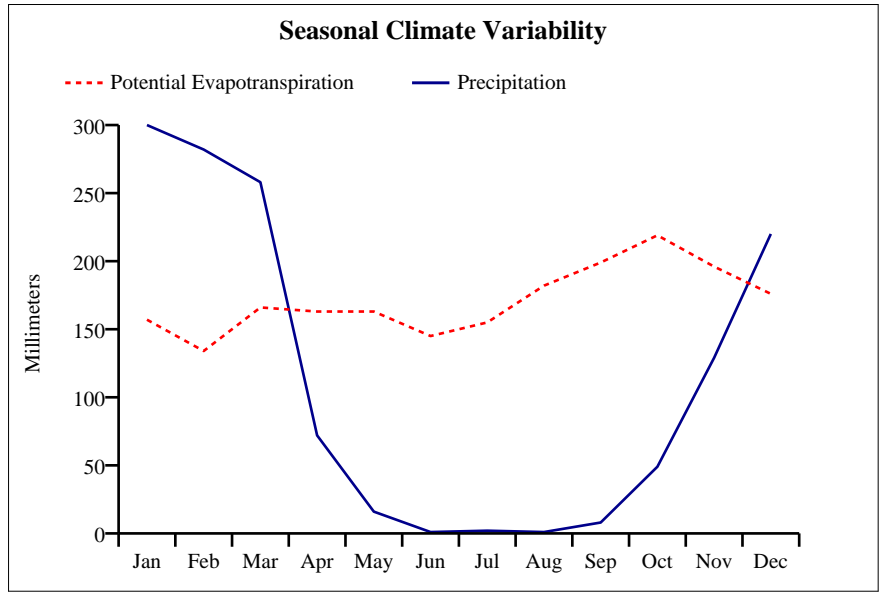
Water Use

Irrigation: ¹	<1
Residential: ¹	<1
Commercial/Industrial: ³	<1
Rural (Stock/Domestic): ³	1
Transfers: ^{1, 2}	0
Total:	2

Total Use (% of Supply): <1%

River Flows

Retained in Storage: [~]	0
Environmental Flows:	Data being compiled
Transmission Losses: [^]	501
Return Flows: ¹	<1
Outflow:[@]	1,504



¹Bureau of Rural Sciences (2007); ²Australian Water Resource Council (1987); ³National Land and Water Resources Audit (2000)

[#]Groundwater only; ^{*}Surface water only; [~]5% of total storage; [^]25% of runoff; ^xincomplete

[@]Surface water (supply - use - retention in storage - transmission losses + environmental flows + return flows)

n/a = Not available