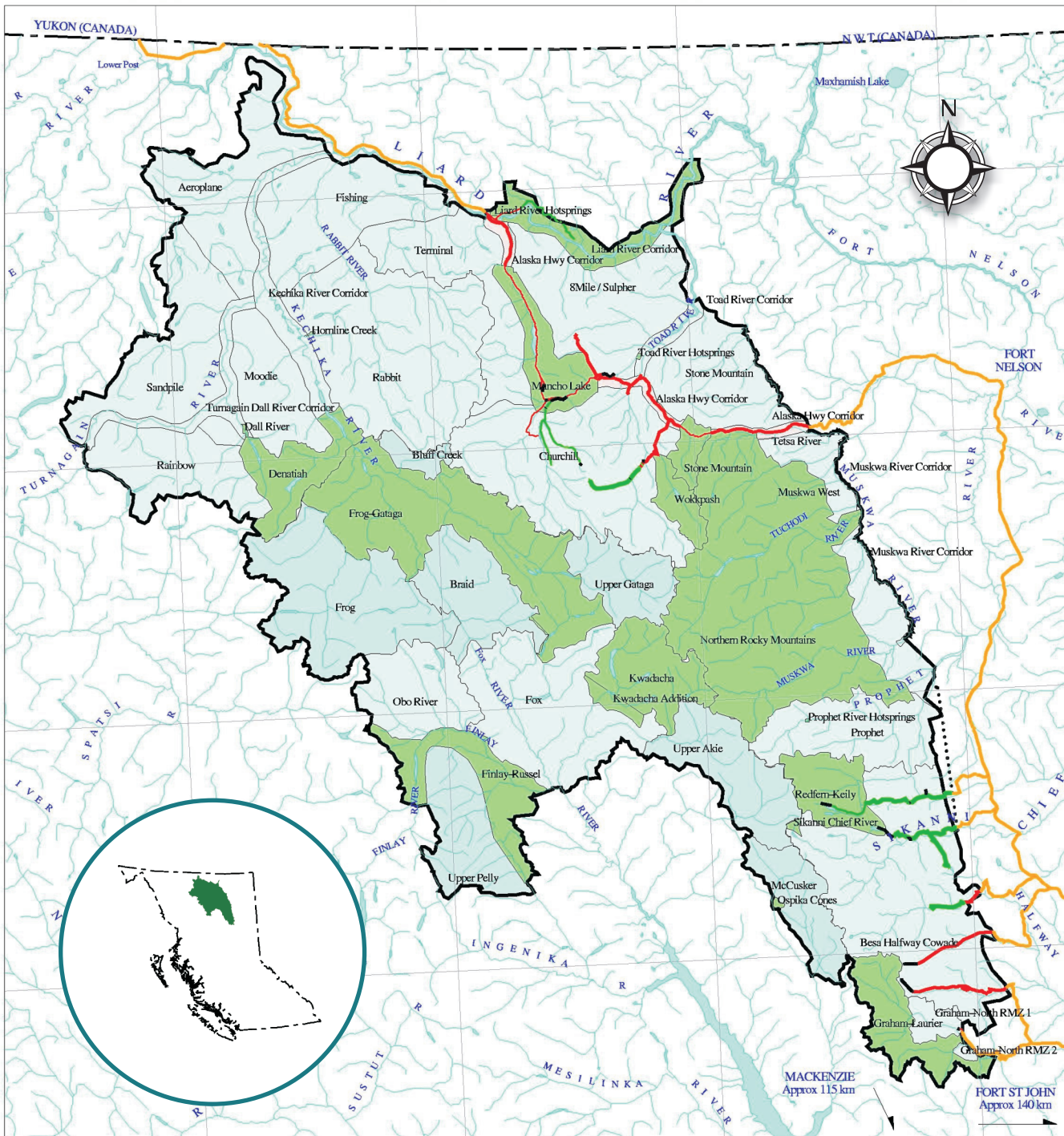




MUSKWA-KECHIKA  
MANAGEMENT AREA  
www.muskwa-kechika.com

# One of North America's true wilderness areas south of the 60th parallel.

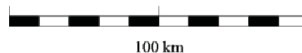


*A vast mosaic of protected areas and special management zones.*

Total area: 6.4 million hectares  
Protected Areas: 1.64 million hectares  
Special Management Zones: 3.63 million hectares  
Special Wildland Zones: 0.92 million hectares



Produced by Geoff Haines  
Muskwa-Kechika  
Peace Region GIS Section  
August 28, 2001



- Protected Area/Proposed Protected Area/Ecological Reserve
- Enhanced Resource Development
- Special Management
- Special Wildland
- Travel is restricted to within 400m of route (Restricted to Alaska Highway right-of-way through Muncho Lake, Stone Mountain, Northern Rocky Mountains Provincial Parks/Protected areas)
- Travel is restricted to within 10m of route
- Travel is restricted to within 400m of route (vehicles under 500kg only)
- Travel is restricted to within 10m of route (vehicles under 500kg only)
- Closed to all motor vehicle travel (snowmobiles exempt)
- Roads and trails not within Muskwa-Kechika Management area