



NEWS RELEASE



**Transmission of material in this release is embargoed until
8:30 a.m. (EDT) Friday, July 15, 2011**

USDL-11-1035

Technical information: (202) 691-7000 • Reed.Steve@bls.gov • www.bls.gov/cpi
Media Contact: (202) 691-5902 • PressOffice@bls.gov

CONSUMER PRICE INDEX – JUNE 2011

The Consumer Price Index for All Urban Consumers (CPI-U) decreased 0.2 percent in June on a seasonally adjusted basis, the U.S. Bureau of Labor Statistics reported today. Over the last 12 months, the all items index increased 3.6 percent before seasonal adjustment.

The gasoline index declined sharply in June, falling 6.8 percent. While this decrease was the major factor in the seasonally adjusted decline in the all items index, the index for household energy declined as well. In contrast, the index for all items less food and energy increased 0.3 percent for the second consecutive month. The indexes for shelter, apparel, new vehicles, used cars and trucks, and medical care all continued to rise in June.

The food index increased as well, although the 0.2 percent rise was the smallest of the year. The index for food at home increased 0.2 percent, with major grocery store food groups mixed. The indexes for fruits and vegetables and for meats, poultry, fish, and eggs both declined, and while the other major grocery store food group indexes all increased, none rose more than 0.6 percent.

The 12 month change in the all items index remained at 3.6 percent. The change in the index for all items less food and energy edged up to 1.6 percent, its highest level since January 2010. The food index has increased 3.7 percent over the last 12 months while the energy index rose 20.1 percent.

Chart 1. One-month percent change in CPI for All Urban Consumers (CPI-U), seasonally adjusted, June 2010 - June 2011
Percent change

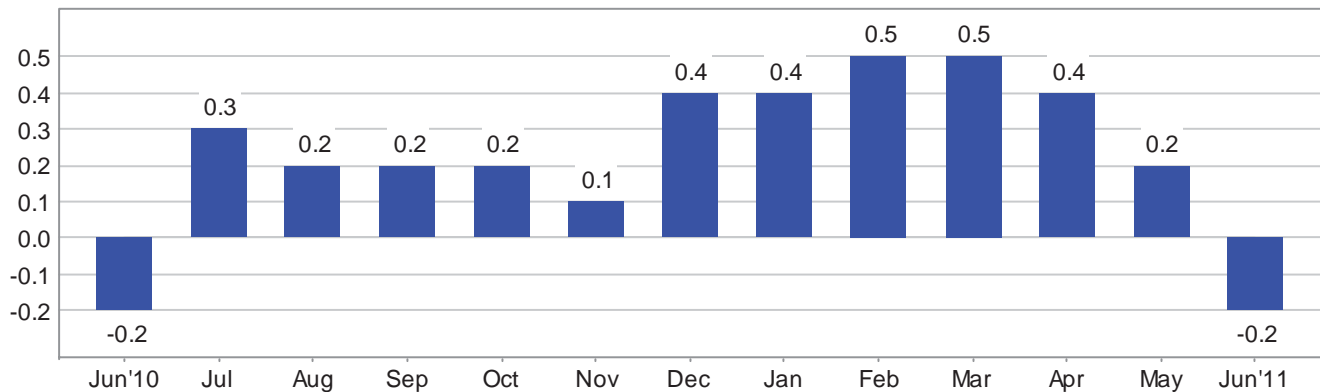


Chart 2. 12-month percent change in CPI for All Urban Consumers (CPI-U), not seasonally adjusted, June 2010 - June 2011

Percent change

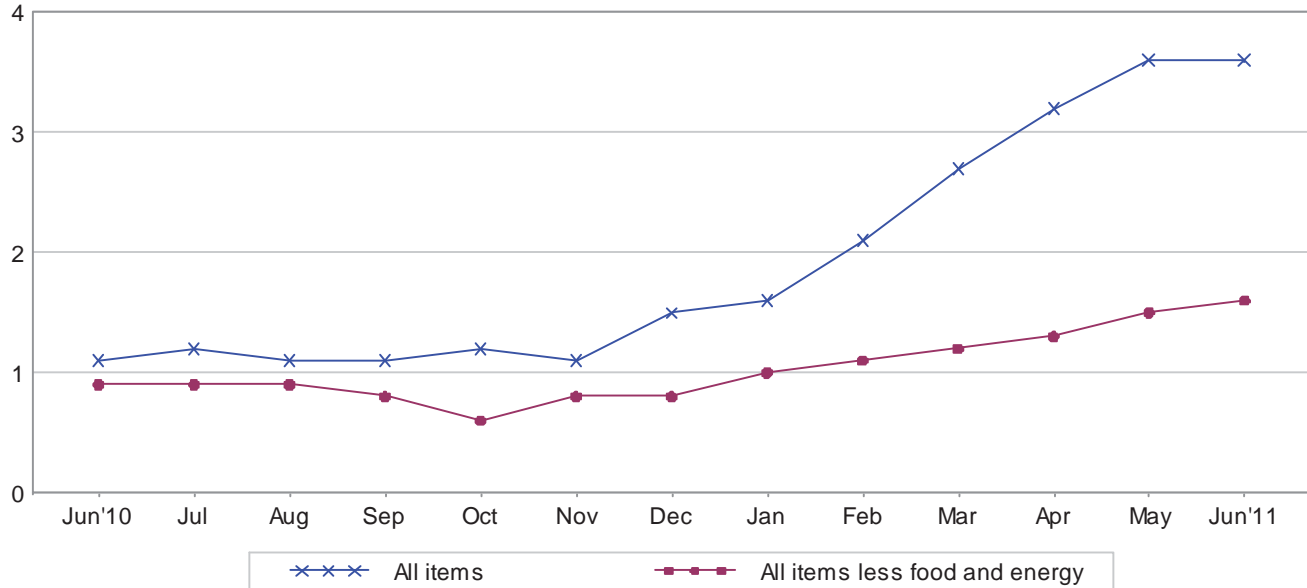


Table A. Percent changes in CPI for All Urban Consumers (CPI-U): U.S. city average

	Seasonally adjusted changes from preceding month							Un-adjusted 12-mos. ended June 2011
	Dec. 2010	Jan. 2011	Feb. 2011	Mar. 2011	Apr. 2011	May 2011	June 2011	
All items4	.4	.5	.5	.4	.2	-.2	3.6
Food1	.5	.6	.8	.4	.4	.2	3.7
Food at home2	.7	.8	1.1	.5	.5	.2	4.7
Food away from home ¹1	.2	.2	.3	.3	.2	.3	2.3
Energy	4.0	2.1	3.4	3.5	2.2	-1.0	-4.4	20.1
Energy commodities	6.4	4.0	4.8	5.5	3.1	-1.9	-6.3	35.1
Gasoline (all types)	6.7	3.5	4.7	5.6	3.3	-2.0	-6.8	35.6
Fuel oil ¹	4.9	6.8	5.8	6.2	3.2	-.8	-2.2	37.3
Energy services6	-.6	1.1	.2	.6	.6	-1.1	1.0
Electricity3	-.5	.4	.7	.2	.8	-1.6	1.5
Utility (piped) gas service	1.7	-1.2	3.4	-1.4	1.9	-.3	.4	-.8
All items less food and energy1	.2	.2	.1	.2	.3	.3	1.6
Commodities less food and energy								
commodities	-.1	.2	.2	.1	.4	.5	.5	1.6
New vehicles	-.1	-.1	1.0	.7	.7	1.1	.6	4.0
Used cars and trucks	-.1	-.3	.1	.8	1.2	1.1	1.6	5.1
Apparel1	1.0	-.9	-.5	.2	1.2	1.4	1.9
Medical care commodities ¹1	.5	.7	.5	.5	.0	-.1	2.9
Services less energy services1	.1	.2	.2	.1	.2	.1	1.6
Shelter1	.1	.1	.1	.1	.2	.2	1.2
Transportation services2	.6	.5	.5	.2	.1	-.3	3.1
Medical care services3	-.1	.4	.1	.3	.3	.3	2.9

¹ Not seasonally adjusted.

Consumer Price Index Data for June 2011

Food

The food index rose 0.2 percent in June after rising 0.4 percent in each of the prior two months. The index for meats, poultry, fish, and eggs turned down in June, falling 0.4 percent after increasing more than one percent in each of the previous four months. The fruits and vegetables index declined for the third month in a row in June, falling 0.3 percent as the fresh vegetables index continued to decline. In contrast, other major grocery store food groups increased. The index for cereals and bakery products rose 0.6 percent in June, and the dairy and related products advanced 0.5 percent, as did the index for other food at home. The index for nonalcoholic beverages increased 0.3 percent as the coffee index continued to rise. The index for food at home has risen 4.7 percent over the last 12 months, with all the major groups increasing 3.2 percent or more. The index for food away from home rose 0.3 percent in June after rising 0.2 percent in May.

Energy

The energy index, which fell 1.0 percent in May, declined 4.4 percent in June, the largest decline since December 2008. The gasoline index, which fell 2.0 percent in May, declined 6.8 percent in June. (Before seasonal adjustment, gasoline prices fell 5.8 percent in June.) Despite the recent declines, the gasoline index has increased 35.6 percent over the past 12 months. The index for household energy also decreased in June, falling 1.2 percent after rising 0.5 percent in May. The index for natural gas rose 0.4 percent, but the electricity index declined 1.6 percent and the index for fuel oil fell 2.2 percent. The household energy index has risen 2.8 percent over the last 12 months, with the fuel oil index up 37.3 percent and the electricity index up 1.5 percent but the index for natural gas down 0.8 percent.

All items less food and energy

The index for all items less food and energy rose 0.3 percent in June, the same increase as in May. The shelter index also repeated its May increase of 0.2 percent, with the index for lodging away from home again rising significantly. The rent index rose 0.1 percent and the index for owners' equivalent rent increased 0.2 percent. The apparel index continued to rise sharply, increasing 1.4 percent in June after a 1.2 percent increase in May. Vehicle indexes also continued to rise; the new vehicles index rose 0.6 percent in June, while the index for used cars and trucks increased 1.6 percent. The medical care index rose 0.2 percent, the same increase as in May, with medical care services rising 0.3 percent but medical care commodities declining 0.1 percent. The tobacco index rose 0.4 percent in June after declining in April and May. In contrast, the index for airline fares declined 3.0 percent in June, and the recreation index turned down, declining 0.1 percent after rising in May.

The index for all items less food and energy increased 1.6 percent over the last 12 months. This figure has been steadily rising and most of the increase has come within the past six months. The shelter index has risen 1.2 percent over the last 12 months, the medical care index has risen 2.9 percent, and the index for new vehicles has increased 4.0 percent.

Not seasonally adjusted CPI measures

The Consumer Price Index for All Urban Consumers (CPI-U) increased 3.6 percent over the last 12 months to an index level of 225.722 (1982-84=100). For the month, the index declined 0.1 percent prior to seasonal adjustment.

The Consumer Price Index for Urban Wage Earners and Clerical Workers (CPI-W) increased 4.1 percent over the last 12 months to an index level of 222.522 (1982-84=100). For the month, the index declined 0.2 percent prior to seasonal adjustment.

The Chained Consumer Price Index for All Urban Consumers (C-CPI-U) increased 3.4 percent over the last 12 months. For the month, the index decreased 0.1 percent on a not seasonally adjusted basis. Please note that the indexes for the post-2009 period are subject to revision.

The Consumer Price Index for July 2011 is scheduled to be released on Thursday, August 18, 2011, at 8:30 a.m. (EDT).

Facilities for Sensory Impaired

Information from this release will be made available to sensory impaired individuals upon request. Voice phone: 202-691-5200, Federal Relay Services: 1-800-877-8339.

Brief Explanation of the CPI

The Consumer Price Index (CPI) is a measure of the average change in prices over time of goods and services purchased by households. The Bureau of Labor Statistics publishes CPIs for two population groups: (1) the CPI for Urban Wage Earners and Clerical Workers (CPI-W), which covers households of wage earners and clerical workers that comprise approximately 32 percent of the total population and (2) the CPI for All Urban Consumers (CPI-U) and the Chained CPI for All Urban Consumers (C-CPI-U), which cover approximately 87 percent of the total population and include in addition to wage earners and clerical worker households, groups such as professional, managerial, and technical workers, the self-employed, short-term workers, the unemployed, and retirees and others not in the labor force.

The CPIs are based on prices of food, clothing, shelter, and fuels, transportation fares, charges for doctors' and dentists' services, drugs, and other goods and services that people buy for day-to-day living. Prices are collected each month in 87 urban areas across the country from about 4,000 housing units and approximately 26,000 retail establishments-department stores, supermarkets, hospitals, filling stations, and other types of stores and service establishments. All taxes directly associated with the purchase and use of items are included in the index. Prices of fuels and a few other items are obtained every month in all 87 locations. Prices of most other commodities and services are collected every month in the three largest geographic areas and every other month in other areas. Prices of most goods and services are obtained by personal visits or telephone calls of the Bureau's trained representatives.

In calculating the index, price changes for the various items in each location are averaged together with weights, which represent their importance in the spending of the appropriate population group. Local data are then combined to obtain a U.S. city average. For the CPI-U and CPI-W separate indexes are also published by size of city, by region of the country, for cross-classifications of regions and population-size classes, and for 27 local areas. Area indexes do not measure differences in the level of prices among cities; they only measure the average change in prices for each area since the base period. For the C-CPI-U data are issued only at the national level. It is important to note that the CPI-U and CPI-W are considered final when released, but the C-CPI-U is issued in preliminary form and subject to two annual revisions.

The index measures price change from a designed reference date. For the CPI-U and the CPI-W the reference base is 1982-84 equals 100. The reference base for the C-CPI-U is December 1999 equals 100. An increase of 16.5 percent from the reference base, for example, is shown as 116.500. This change can also be expressed in dollars as follows: the price of a base period market basket of goods and services in the CPI has risen from \$10 in 1982-84 to \$11.65.

For further details visit the CPI home page on the Internet at <http://www.bls.gov/cpi/> or contact our CPI Information and Analysis Section on (202) 691-7000.

Note on Sampling Error in the Consumer Price Index

The CPI is a statistical estimate that is subject to sampling error because it is based upon a sample of retail prices and not the complete universe of all prices. BLS calculates and publishes estimates of the 1-month, 2-month, 6-month and 12-month percent change standard errors annually, for the CPI-U. These standard error estimates can be used to construct confidence intervals for hypothesis testing. For example, the estimated standard error of the 1 month percent change is 0.03 percent for the U.S. All Items Consumer Price Index. This means that if we repeatedly sample from the universe of all retail prices using the same methodology, and estimate a percentage change for each sample, then 95% of these estimates would be within 0.06 percent of the 1 month percentage change based on all retail prices. For example, for a 1-month change of 0.2 percent in the All Items CPI for All Urban Consumers, we are 95 percent confident that the actual percent change based on all retail prices would fall between 0.14 and 0.26 percent. For the latest data, including information on how to use the estimates of standard error, see “Variance Estimates for Price Changes in the Consumer Price Index, January-December 2010”. These data are available on the CPI home page (<http://www.bls.gov/cpi>), or by using the following link <http://www.bls.gov/cpi/cpivar2010.pdf>

Calculating Index Changes

Movements of the indexes from one month to another are usually expressed as percent changes rather than changes in index points, because index point changes are affected by the level of the index in relation to its base period while percent changes are not. The example below illustrates the computation of index point and percent changes.

Percent changes for 3-month and 6-month periods are expressed as annual rates and are computed according to the standard formula for compound growth rates. These data indicate what the percent change would be if the current rate were maintained for a 12-month period.

Index Point Change

CPI	202.416
Less previous index	201.800
Equals index point change	.616

Percent Change

Index point difference	.616
Divided by the previous index	201.800
Equals	0.003
Results multiplied by one hundred	0.003x100
Equals percent change	0.3

Regions Defined

The states in the four regions shown in Tables 3 and 6 are listed below.

The Northeast--Connecticut, Maine, Massachusetts, New Hampshire, New York, New Jersey, Pennsylvania, Rhode Island, and Vermont.

The Midwest--Illinois, Indiana, Iowa, Kansas, Michigan, Minnesota, Missouri, Nebraska, North Dakota, Ohio, South Dakota, and Wisconsin.

The South--Alabama, Arkansas, Delaware, Florida, Georgia, Kentucky, Louisiana, Maryland, Mississippi, North Carolina, Oklahoma, South Carolina, Tennessee, Texas, Virginia, West Virginia, and the District of Columbia.

The West--Alaska, Arizona, California, Colorado, Hawaii, Idaho, Montana, Nevada, New Mexico, Oregon, Utah, Washington, and Wyoming.

A Note on Seasonally Adjusted and Unadjusted Data

Because price data are used for different purposes by different groups, the Bureau of Labor Statistics publishes seasonally adjusted as well as unadjusted changes each month.

For analyzing general price trends in the economy, seasonally adjusted changes are usually preferred since they eliminate the effect of changes that normally occur at the same time and in about the same magnitude every year--such as price movements resulting from changing climatic conditions, production cycles, model changeovers, holidays, and sales.

The unadjusted data are of primary interest to consumers concerned about the prices they actually pay. Unadjusted data also are used extensively for escalation purposes. Many collective bargaining contract agreements and pension plans, for example, tie compensation changes to the Consumer Price Index before adjustment for seasonal variation.

Seasonal factors used in computing the seasonally adjusted indexes are derived by the X-12-ARIMA Seasonal Adjustment Method. Seasonally adjusted indexes and seasonal factors are computed annually. Each year, the last 5 years of seasonally adjusted data are revised. Data from January 2006 through December 2010 were replaced in January 2011. Exceptions to the usual revision schedule were: the updated seasonal data at the end of 1977 replaced data from 1967 through 1977; and, in January 2002, dependently seasonally adjusted series were revised for January 1987-December 2001 as a result of a change in the aggregation weights for dependently adjusted series. For further information, please see "Aggregation of Dependently Adjusted Seasonally Adjusted Series," in the October 2001 issue of the CPI Detailed Report.

Effective with the publication of data from January 2006 through December 2010 in January 2011, the Video and audio series and the Information technology, hardware and services series were changed from independently adjusted to dependently adjusted. This resulted in an increase in the number of seasonal components used in deriving seasonal movement of the All items and 54 other lower level aggregations, from 73 for the publication of January 1998 through December 2005 data to 82 for the publication of seasonally adjusted data for January 2006 and later. Each year the seasonal status of every series is reevaluated based upon certain statistical criteria. If any of the 82 components change their seasonal adjustment status from seasonally adjusted to not seasonally adjusted, not seasonally adjusted data will be used in the aggregation of the dependent series for the last 5 years, but the seasonally adjusted

indexes before that period will not be changed. Note: 37 of the 82 components are not seasonally adjusted for 2011.

Seasonally adjusted data, including the all items index levels, are subject to revision for up to five years after their original release. For this reason, BLS advises against the use of these data in escalation agreements.

Effective with the calculation of the seasonal factors for 1990, the Bureau of Labor Statistics has used an enhanced seasonal adjustment procedure called Intervention Analysis Seasonal Adjustment for some CPI series. Intervention Analysis Seasonal Adjustment allows for better estimates of seasonally adjusted data. Extreme values and/or sharp movements which might distort the seasonal pattern are estimated and removed from the data prior to calculation of seasonal factors. Beginning with the calculation of seasonal factors for 1996, X-12-ARIMA software was used for Intervention Analysis Seasonal Adjustment.

For the seasonal factors introduced in January 2011, BLS adjusted 29 series using Intervention Analysis Seasonal Adjustment, including selected food and beverage items, motor fuels, electricity and vehicles. For example, this procedure was used for the Motor fuel series to offset the effects of events such as damage to oil refineries from Hurricane Katrina.

For a complete list of Intervention Analysis Seasonal Adjustment series and explanations, please refer to the article "Intervention Analysis Seasonal Adjustment", located on our website at <http://www.bls.gov/cpi/cpisapage.htm>.

For additional information on seasonal adjustment in the CPI, please write to the Bureau of Labor Statistics, Division of Consumer Prices and Price Indexes, Washington, DC 20212 or contact David Levin at (202) 691-6968, or by e-mail at Levin.David@bls.gov. If you have general questions about the CPI, please call our information staff at (202) 691-7000.

Table 1. Consumer Price Index for All Urban Consumers (CPI-U): U.S. city average, by expenditure category and commodity and service group

(1982-84=100, unless otherwise noted)

Expenditure category	CPI-U	Relative importance, December 2010	Unadjusted indexes		Unadjusted percent change to June 2011 from—		Seasonally adjusted percent change from—		
			May 2011	June 2011	June 2010	May 2011	Mar. to Apr.	Apr. to May	May to June
All items	100.000	225.964	225.722	3.6	-0.1	0.4	0.2	-0.2	
All items (1967=100)	-	676.887	676.162	-	-	-	-	-	
Food and beverages	14.792	227.082	227.451	3.6	.2	.4	.4	.2	
Food	13.742	226.976	227.360	3.7	.2	.4	.4	.2	
Food at home	7.816	225.356	225.588	4.7	.1	.5	.5	.2	
Cereals and bakery products	1.090	259.140	260.563	4.1	.5	.1	1.0	.6	
Meats, poultry, fish, and eggs	1.813	223.227	223.105	7.2	-.1	1.1	1.5	-.4	
Dairy and related products ¹839	211.327	212.286	7.2	.5	1.7	.8	.5	
Fruits and vegetables	1.152	284.174	280.721	3.2	-1.2	-1.1	-1.3	-.3	
Nonalcoholic beverages and beverage materials926	165.862	166.197	3.6	.2	1.2	.0	.3	
Other food at home	1.996	196.161	197.270	3.3	.6	.3	.4	.5	
Sugar and sweets ¹297	205.285	207.672	4.0	1.2	-.8	.7	1.2	
Fats and oils232	216.370	218.771	9.7	1.1	.8	.4	1.0	
Other foods	1.466	208.518	209.259	2.1	.4	.5	.4	.3	
Other miscellaneous foods ^{1 2}432	123.343	123.692	1.8	.3	.9	-.3	.3	
Food away from home ¹	5.926	230.501	231.097	2.3	.3	.3	.2	.3	
Other food away from home ^{1 2}329	162.483	162.494	2.0	.0	.2	.2	.0	
Alcoholic beverages	1.051	226.989	227.154	2.0	.1	.3	.4	.1	
Housing	41.460	218.484	219.553	1.3	.5	.2	.2	.1	
Shelter	31.955	250.745	251.422	1.2	.3	.1	.2	.2	
Rent of primary residence ³	5.925	252.393	252.592	1.4	.1	.1	.1	.1	
Lodging away from home ²776	139.094	145.608	3.7	4.7	.0	2.9	3.0	
Owners' equivalent rent of residences ^{3 4}	24.905	258.587	259.010	1.0	.2	.1	.1	.2	
Owners' equivalent rent of primary residence ^{3 4}	23.310	258.574	258.996	1.0	.2	.1	.1	.2	
Tenants' and household insurance ^{1 2}349	126.780	127.155	1.5	.3	.6	.2	.3	
Fuels and utilities	5.096	219.956	225.022	3.3	2.3	.6	.4	-.8	
Household energy	4.000	193.498	199.122	2.8	2.9	.7	.5	-1.2	
Fuel oil and other fuels ¹309	347.002	340.775	28.3	-1.8	2.0	-.5	-1.8	
Energy services ³	3.691	193.698	200.191	1.0	3.4	.6	.6	-1.1	
Water and sewer and trash collection services ²	1.095	178.521	178.640	5.2	.1	.4	.3	.4	
Household furnishings and operations	4.409	125.141	125.048	-.4	-.1	.2	.2	.0	
Household operations ^{1 2}772	151.730	151.730	.8	.0	.5	.3	.0	
Apparel	3.601	122.271	120.578	1.9	-1.4	.2	1.2	1.4	
Men's and boys' apparel882	114.976	114.279	1.6	-.6	.0	1.5	2.6	
Women's and girls' apparel	1.520	109.237	106.746	1.9	-2.3	.3	1.3	1.4	
Infants' and toddlers' apparel192	111.199	110.011	-2.6	-1.1	.3	.6	.6	
Footwear700	129.618	128.054	.7	-1.2	-.6	1.5	.4	
Transportation	17.308	220.270	216.880	12.6	-1.5	1.4	-.3	-1.9	
Private transportation	16.082	215.829	212.216	13.1	-1.7	1.5	-.2	-1.9	
New and used motor vehicles ²	6.333	99.915	101.004	3.9	1.1	.8	1.0	1.0	
New vehicles	3.513	142.494	143.054	4.0	.4	.7	1.1	.6	
Used cars and trucks	2.055	148.361	151.776	5.1	2.3	1.2	1.1	1.6	
Motor fuel	5.079	337.359	318.242	35.5	-5.7	3.2	-2.0	-6.6	
Gasoline (all types)	4.865	336.999	317.543	35.6	-5.8	3.3	-2.0	-6.8	
Motor vehicle parts and equipment ¹408	143.328	144.618	5.8	.9	.6	1.2	.9	
Motor vehicle maintenance and repair ¹	1.172	252.376	252.529	2.0	.1	.3	.4	.1	
Public transportation	1.227	271.417	272.297	5.6	.3	.2	-.5	-2.2	
Medical care	6.627	399.375	399.552	2.9	.0	.4	.2	.2	
Medical care commodities ¹	1.633	324.399	324.102	2.9	-.1	.5	.0	-.1	
Medical care services	4.994	422.438	422.813	2.9	.1	.3	.3	.3	
Professional services	2.830	335.132	335.494	2.3	.1	.1	.0	.2	

See footnotes at end of table.

Table 1. Consumer Price Index for All Urban Consumers (CPI-U): U.S. city average, by expenditure category and commodity and service group-Continued

(1982-84=100, unless otherwise noted)

CPI-U	Relative importance, December 2010	Unadjusted indexes		Unadjusted percent change to June 2011 from—		Seasonally adjusted percent change from—		
		May 2011	June 2011	June 2010	May 2011	Mar. to Apr.	Apr. to May	May to June
Expenditure category								
Hospital and related services	1.703	639.456	639.728	5.5	0.0	0.6	0.7	0.5
Recreation ²	6.293	113.659	113.654	-.1	.0	.0	.3	-.1
Video and audio ²	1.816	98.707	98.373	-1.4	-.3	.0	.0	-.5
Education and communication ²	6.421	130.600	130.568	1.0	.0	.1	.1	.1
Education ²	3.107	204.668	204.821	3.8	.1	.3	.4	.3
Educational books and supplies204	523.640	524.307	3.8	.1	.3	.5	.2
Tuition, other school fees, and childcare	2.903	588.138	588.556	3.8	.1	.3	.4	.3
Communication ²	3.313	83.466	83.367	-1.5	-.1	-.1	-.2	-.1
Information and information processing ²	3.138	80.081	79.980	-1.8	-.1	-.1	-.2	-.1
Telephone services ^{1 2}	2.334	101.159	101.204	-1.1	.0	-.1	.0	.0
Information technology, hardware and services ⁵804	9.096	9.038	-4.1	-.6	-.3	-.6	-.4
Personal computers and peripheral equipment ⁶228	70.898	69.125	-8.7	-2.5	-.2	-.6	-1.6
Other goods and services	3.497	385.476	386.171	1.4	.2	.1	-.2	.3
Tobacco and smoking products ¹906	825.690	828.860	2.8	.4	-.4	-.2	.4
Personal care	2.591	208.080	208.307	.9	.1	.3	-.2	.3
Personal care products ¹671	159.478	160.163	.1	.4	.3	-1.2	.4
Personal care services ¹638	230.505	230.614	.2	.0	.2	.1	.0
Miscellaneous personal services	1.055	361.786	362.435	2.4	.2	.4	.1	.2
Commodity and service group								
Commodities	40.012	186.804	185.266	6.5	-.8	.8	.1	-.6
Food and beverages	14.792	227.082	227.451	3.6	.2	.4	.4	.2
Commodities less food and beverages	25.219	164.286	162.032	8.3	-1.4	1.0	-.1	-1.1
Nondurables less food and beverages	15.474	217.037	211.621	12.4	-2.5	1.1	.1	-1.9
Apparel	3.601	122.271	120.578	1.9	-1.4	.2	1.2	1.4
Nondurables less food, beverages, and apparel	11.873	281.064	273.195	15.7	-2.8	1.5	-.5	-2.9
Durables	9.745	112.941	113.598	1.9	.6	.6	.6	.6
Services	59.988	264.883	265.928	1.6	.4	.2	.2	.1
Rent of shelter ⁴	31.607	261.272	261.977	1.2	.3	.1	.2	.1
Tenants' and household insurance ^{1 2}349	126.780	127.155	1.5	.3	.6	.2	.3
Energy services ³	3.691	193.698	200.191	1.0	3.4	.6	.6	-1.1
Water and sewer and trash collection services ²	1.095	178.521	178.640	5.2	.1	.4	.3	.4
Household operations ^{1 2}772	151.730	151.730	.8	.0	.5	.3	.0
Transportation services	6.140	267.832	268.488	3.1	.2	.2	.1	-.3
Medical care services	4.994	422.438	422.813	2.9	.1	.3	.3	.3
Other services	11.340	313.205	313.332	1.3	.0	.1	.3	.1
Special indexes								
All items less food	86.258	225.826	225.485	3.5	-.2	.4	.1	-.3
All items less shelter	68.045	218.847	218.239	4.7	-.3	.6	.2	-.4
All items less medical care	93.373	217.414	217.158	3.6	-.1	.4	.2	-.3
Commodities less food	26.270	166.657	164.461	8.0	-1.3	1.0	-.1	-1.1
Nondurables less food	16.525	217.771	212.660	11.7	-2.3	1.1	-.1	-1.9
Nondurables less food and apparel	12.923	274.948	267.823	14.6	-2.6	1.5	-.4	-2.7
Nondurables	30.266	223.413	220.611	8.1	-1.3	.9	.2	-1.1
Services less rent of shelter ⁴	28.382	289.676	291.219	2.0	.5	.3	.3	-.1
Services less medical care services	54.994	252.713	253.781	1.5	.4	.2	.2	.0
Energy	9.079	260.376	254.170	20.1	-2.4	2.2	-1.0	-4.4
All items less energy	90.921	224.275	224.635	2.0	.2	.2	.3	.2
All items less food and energy	77.179	224.534	224.891	1.6	.2	.2	.3	.3
Commodities less food and energy commodities	20.882	145.657	145.741	1.6	.1	.4	.5	.5
Energy commodities	5.388	340.183	321.578	35.1	-5.5	3.1	-1.9	-6.3
Services less energy services	56.297	272.158	272.695	1.6	.2	.1	.2	.1
Purchasing power of the consumer dollar (1982-84=\$1.00)	-	\$.443	\$.443	-	-	-	-	-
Purchasing power of the consumer dollar (1967=\$1.00)	-	\$.148	\$.148	-	-	-	-	-

¹ Not seasonally adjusted.

² Indexes on a December 1997=100 base.

³ This index series was calculated using a Laspeyres estimator. All other item stratum index series were calculated using a geometric means estimator.

⁴ Indexes on a December 1982=100 base.

⁵ Indexes on a December 1988=100 base.

⁶ Indexes on a December 2007=100 base.

- Data not available.

NOTE: Index applies to a month as a whole, not to any specific date.

Table 2. Consumer Price Index for All Urban Consumers (CPI-U): Seasonally adjusted U.S. city average, by expenditure category and commodity and service group

(1982-84=100, unless otherwise noted)

CPI-U	Seasonally adjusted indexes				Seasonally adjusted annual rate percent change for					
					3 months ended—			6 months ended—		
	Mar. 2011	Apr. 2011	May 2011	June 2011	Sep. 2010	Dec. 2010	Mar. 2011	June 2011	Dec. 2010	June 2011
Expenditure category										
All items	223.490	224.433	224.804	224.304	2.9	3.3	6.1	1.5	3.1	3.8
Food and beverages	225.345	226.330	227.137	227.585	1.8	1.5	7.1	4.0	1.7	5.5
Food	225.228	226.231	227.024	227.493	1.8	1.6	7.5	4.1	1.7	5.8
Food at home	223.219	224.373	225.440	225.818	1.4	2.0	11.2	4.7	1.7	7.9
Cereals and bakery products	255.395	255.751	258.365	259.833	1.8	1.9	5.7	7.1	1.9	6.4
Meats, poultry, fish, and eggs	218.803	221.181	224.390	223.561	3.7	2.9	13.5	9.0	3.3	11.2
Dairy and related products ¹	206.161	209.707	211.327	212.286	2.2	6.2	8.4	12.4	4.2	10.4
Fruits and vegetables	289.890	286.716	283.011	282.217	-2.7	5.4	23.3	-10.2	1.3	5.3
Nonalcoholic beverages and beverage materials	164.340	166.375	166.304	166.866	1.4	-3.1	10.4	6.3	-9.9	8.3
Other food at home	194.602	195.207	196.037	197.027	1.2	-1	7.1	5.1	.6	6.1
Sugar and sweets ¹	205.505	203.783	205.285	207.672	5.6	1.2	4.8	4.3	3.4	4.6
Fats and oils	214.596	216.297	217.141	219.368	2.0	3.4	25.8	9.2	2.7	17.2
Other foods	206.493	207.448	208.214	208.810	.3	-9	4.8	4.6	-3	4.7
Other miscellaneous foods ^{1 2}	122.665	123.769	123.343	123.692	1.8	1.0	.8	3.4	1.4	2.1
Food away from home ¹	229.282	230.082	230.501	231.097	2.3	1.1	2.8	3.2	1.7	3.0
Other food away from home ^{1 2}	161.886	162.218	162.483	162.494	2.0	1.5	3.0	1.5	1.8	2.3
Alcoholic beverages	225.409	226.141	227.134	227.306	2.2	.8	1.6	3.4	1.5	2.5
Housing	217.852	218.192	218.637	218.770	.4	1.1	1.9	1.7	.8	1.8
Shelter	250.102	250.278	250.707	251.267	.4	1.2	1.3	1.9	.8	1.6
Rent of primary residence ³	251.930	252.102	252.403	252.683	.8	2.0	1.7	1.2	1.4	1.5
Lodging away from home ²	133.920	133.885	137.705	141.840	-4.7	-2.8	-1.0	25.8	-3.7	11.6
Owners' equivalent rent of residences ^{3 4}	258.204	258.377	258.623	259.023	.5	1.1	1.3	1.3	.8	1.3
Owners' equivalent rent of primary residence ^{3 4}	258.196	258.364	258.610	259.009	.5	1.1	1.3	1.3	.8	1.3
Tenants' and household insurance ^{1 2}	125.863	126.574	126.780	127.155	4.3	-1.4	-1.0	4.2	1.4	1.5
Fuels and utilities	219.480	220.834	221.800	219.939	2.3	3.2	7.1	.8	2.8	3.9
Household energy	193.211	194.539	195.475	193.171	1.6	2.7	7.2	-1	2.2	3.5
Fuel oil and other fuels ¹	341.884	348.657	347.002	340.775	.4	58.0	73.2	-1.3	26.0	30.7
Energy services ³	193.654	194.751	195.864	193.669	1.7	-6	2.8	.0	.5	1.4
Water and sewer and trash collection services ²	177.684	178.316	178.806	179.574	4.8	5.1	6.7	4.3	5.0	5.5
Household furnishings and operations	124.375	124.661	124.859	124.813	-1.8	-1.5	.2	1.4	-1.7	.8
Household operations ^{1 2}	150.541	151.338	151.730	151.730	-6	.8	-3	3.2	.1	1.4
Apparel	118.770	118.951	120.342	122.037	-1.4	-4	-1.5	11.5	-9	4.8
Men's and boys' apparel	110.648	110.613	112.243	115.111	-3.6	-3.3	-2.3	17.1	-3.4	7.0
Women's and girls' apparel	105.708	105.993	107.363	108.838	-2.1	.4	-2.3	12.4	-9	4.8
Infants' and toddlers' apparel	109.796	110.154	110.858	111.560	-1.6	-1.6	-12.7	6.6	-1.6	-3.5
Footwear	127.476	126.702	128.540	129.051	.1	-3.3	1.0	5.0	-1.6	3.0
Transportation	212.001	215.016	214.457	210.317	14.0	15.1	23.9	-3.1	14.6	9.5
Private transportation	207.045	210.173	209.664	205.663	15.3	15.1	24.1	-2.6	15.2	9.9
New and used motor vehicles ²	98.249	99.051	99.997	100.992	1.8	-1.8	4.5	11.6	.0	8.0
New vehicles	140.078	141.092	142.637	143.501	1.7	-1.7	6.4	10.1	.0	8.3
Used cars and trucks	144.958	146.704	148.264	150.707	4.3	-2.3	2.5	16.8	.9	9.4
Motor fuel	307.358	317.215	310.990	290.494	54.0	57.0	74.8	-20.2	55.5	18.1
Gasoline (all types)	306.128	316.333	310.161	289.077	55.6	59.5	71.2	-20.5	57.6	16.7
Motor vehicle parts and equipment ¹	140.686	141.590	143.328	144.618	3.3	4.2	4.3	11.7	3.7	7.9
Motor vehicle maintenance and repair ¹	250.820	251.458	252.376	252.529	2.6	1.5	1.1	2.8	2.0	1.9
Public transportation	273.100	273.781	272.417	266.349	-1.7	15.2	21.4	-9.5	6.4	4.8
Medical care	396.364	397.793	398.739	399.500	3.2	2.3	2.9	3.2	2.8	3.1
Medical care commodities ¹	322.691	324.241	324.399	324.102	1.2	1.8	7.1	1.8	1.5	4.4
Medical care services	418.937	420.282	421.544	422.741	3.9	2.5	1.6	3.7	3.2	2.6
Professional services	333.993	334.196	334.323	335.125	3.7	1.9	2.3	1.4	2.8	1.8

See footnotes at end of table.

Table 2. Consumer Price Index for All Urban Consumers (CPI-U): Seasonally adjusted U.S. city average, by expenditure category and commodity and service group-Continued

(1982-84=100, unless otherwise noted)

CPI-U Expenditure category	Seasonally adjusted indexes				Seasonally adjusted annual rate percent change for					
					3 months ended—			6 months ended—		
	Mar. 2011	Apr. 2011	May 2011	June 2011	Sep. 2010	Dec. 2010	Mar. 2011	June 2011	Dec. 2010	June 2011
Hospital and related services	629.315	633.287	637.925	641.042	6.5	5.7	2.3	7.7	6.1	4.9
Recreation ²	113.228	113.183	113.512	113.448	-1.9	-1.2	1.8	.8	-1.5	1.3
Video and audio ²	98.466	98.437	98.424	97.922	-3.1	-2.8	2.5	-2.2	-3.0	.1
Education and communication ²	130.898	131.012	131.168	131.300	1.1	.0	1.8	1.2	.6	1.5
Education ²	205.133	205.707	206.559	207.115	2.2	4.0	5.2	3.9	3.1	4.6
Educational books and supplies	522.344	523.912	526.573	527.674	-1.6	6.5	6.6	4.1	2.4	5.4
Tuition, other school fees, and childcare	589.674	591.314	593.725	595.349	2.5	3.8	5.1	3.9	3.1	4.5
Communication ²	83.656	83.576	83.441	83.391	.2	-3.6	-1.4	-1.3	-1.7	-1.3
Information and information processing ²	80.290	80.201	80.056	80.004	.2	-3.8	-2.3	-1.4	-1.8	-1.9
Telephone services ^{1 2}	101.258	101.191	101.159	101.204	1.3	-3.4	-1.9	-.2	-1.1	-1.0
Information technology, hardware and services ⁵	9.163	9.140	9.084	9.049	-2.9	-4.9	-3.5	-4.9	-3.9	-4.2
Personal computers and peripheral equipment ⁶	71.142	71.002	70.586	69.430	.9	-11.6	-14.3	-9.3	-5.6	-11.8
Other goods and services	385.215	385.600	384.959	386.068	3.3	.8	.6	.9	2.0	.7
Tobacco and smoking products ¹	830.693	827.287	825.690	828.860	9.0	1.9	1.5	-.9	5.4	.3
Personal care	207.451	208.030	207.704	208.232	1.3	.4	.2	1.5	.9	.9
Personal care products ¹	160.981	161.418	159.478	160.163	2.3	-.8	.8	-2.0	.7	-.6
Personal care services ¹	230.034	230.380	230.505	230.614	.2	-.3	-.2	1.0	-.1	.4
Miscellaneous personal services	359.233	360.622	361.046	361.765	2.4	2.6	1.7	2.8	2.5	2.3
Commodity and service group										
Commodities	182.627	184.090	184.226	183.042	5.7	6.0	12.6	.9	5.9	6.6
Food and beverages	225.345	226.330	227.137	227.585	1.8	1.5	7.1	4.0	1.7	5.5
Commodities less food and beverages	159.267	160.874	160.735	158.934	8.1	8.8	15.9	-.8	8.4	7.2
Nondurables less food and beverages	207.789	210.177	210.446	206.462	14.1	16.5	23.3	-2.5	15.3	9.6
Apparel	118.770	118.951	120.342	122.037	-1.4	-.4	-1.5	11.5	-.9	4.8
Nondurables less food, beverages, and apparel	268.329	272.442	271.195	263.361	19.8	22.3	32.0	-7.2	21.1	10.7
Durables	111.490	112.128	112.843	113.560	.3	-3.0	3.1	7.6	-1.4	5.4
Services	264.161	264.561	265.147	265.318	1.1	1.4	2.1	1.8	1.2	1.9
Rent of shelter ⁴	260.389	260.645	261.102	261.396	.9	2.6	-.3	1.6	1.8	.6
Tenants' and household insurance ^{1 2}	125.863	126.574	126.780	127.155	4.3	-1.4	-1.0	4.2	1.4	1.5
Energy services ³	193.654	194.751	195.864	193.669	1.7	-.6	2.8	.0	.5	1.4
Water and sewer and trash collection services ²	177.684	178.316	178.806	179.574	4.8	5.1	6.7	4.3	5.0	5.5
Household operations ^{1 2}	150.541	151.338	151.730	151.730	-.6	.8	-.3	3.2	.1	1.4
Transportation services	267.523	268.096	268.408	267.700	1.4	4.2	6.4	.3	2.8	3.3
Medical care services	418.937	420.282	421.544	422.741	3.9	2.5	1.6	3.7	3.2	2.6
Other services	312.626	312.898	313.707	313.917	.9	.7	2.0	1.7	.8	1.8
Special indexes										
All items less food	223.237	224.171	224.475	223.822	3.1	3.5	5.9	1.1	3.3	3.5
All items less shelter	215.619	216.878	217.230	216.303	4.1	4.3	8.5	1.3	4.2	4.8
All items less medical care	214.982	215.899	216.244	215.700	2.9	3.3	6.4	1.3	3.1	3.8
Commodities less food	161.713	163.303	163.195	161.441	7.9	8.4	15.3	-.7	8.1	7.0
Nondurables less food	208.940	211.335	211.633	207.713	13.2	16.6	21.0	-2.3	14.9	8.7
Nondurables less food and apparel	263.245	267.120	266.147	259.034	18.1	20.4	29.3	-6.2	19.3	10.1
Nondurables	217.689	219.744	220.165	217.801	7.6	9.6	15.4	.2	8.6	7.5
Services less rent of shelter ⁴	288.851	289.660	290.391	290.050	1.4	2.2	2.9	1.7	1.8	2.3
Services less medical care services	252.011	252.413	253.004	252.972	1.0	2.4	1.0	1.5	1.7	1.3
Energy	245.941	251.319	248.837	237.889	26.5	29.8	42.4	-12.5	28.2	11.6
All items less energy	222.992	223.494	224.157	224.711	.9	.9	2.8	3.1	.9	3.0
All items less food and energy	223.331	223.745	224.387	224.958	.8	.8	2.0	2.9	.8	2.5
Commodities less food and energy commodities	143.917	144.423	145.183	145.979	.2	-1.2	1.9	5.9	-.5	3.9
Energy commodities	311.218	320.989	314.950	295.025	50.2	57.0	74.7	-19.2	53.6	18.8
Services less energy services	271.371	271.707	272.244	272.638	1.0	1.6	2.1	1.9	1.3	2.0

¹ Not seasonally adjusted.

² Indexes on a December 1997=100 base.

³ This index series was calculated using a Laspeyres estimator. All other item stratum index series were calculated using a geometric means estimator.

⁴ Indexes on a December 1982=100 base.

⁵ Indexes on a December 1988=100 base.

⁶ Indexes on a December 2007=100 base.

NOTE: Index applies to a month as a whole, not to any specific date.

Table 3. Consumer Price Index for All Urban Consumers (CPI-U): Selected areas, all items index

(1982-84=100, unless otherwise noted)

CPI-U	Pricing schedule 1	All items									
		Indexes				Percent change to June 2011 from—			Percent change to May 2011 from—		
		Mar. 2011	Apr. 2011	May 2011	June 2011	June 2010	Apr. 2011	May 2011	May 2010	Mar. 2011	Apr. 2011
U.S. city average	M	223.467	224.906	225.964	225.722	3.6	0.4	-0.1	3.6	1.1	0.5
Region and area size²											
Northeast urban	M	239.074	240.267	241.566	241.690	3.4	.6	.1	3.2	1.0	.5
Size A - More than 1,500,000	M	240.599	241.626	242.976	243.257	3.2	.7	.1	2.9	1.0	.6
Size B/C - 50,000 to 1,500,000 ³	M	143.001	143.987	144.697	144.525	3.9	.4	-1	3.8	1.2	.5
Midwest urban	M	212.954	214.535	215.899	215.954	3.9	.7	.0	3.8	1.4	.6
Size A - More than 1,500,000	M	213.449	214.878	216.376	216.290	3.8	.7	.0	3.8	1.4	.7
Size B/C - 50,000 to 1,500,000 ³	M	136.834	138.005	138.827	139.115	3.9	.8	.2	3.8	1.5	.6
Size D - Nonmetropolitan (less than 50,000)	M	209.713	211.314	212.210	211.717	3.9	.2	-2	4.0	1.2	.4
South urban	M	217.214	218.820	219.820	219.318	3.8	.2	-2	4.0	1.2	.5
Size A - More than 1,500,000	M	218.391	219.944	220.982	220.481	3.5	.2	-2	3.7	1.2	.5
Size B/C - 50,000 to 1,500,000 ³	M	138.211	139.177	139.833	139.639	4.1	.3	-1	4.0	1.2	.5
Size D - Nonmetropolitan (less than 50,000)	M	222.275	224.716	225.416	223.675	3.9	-5	-8	5.2	1.4	.3
West urban	M	226.558	227.837	228.516	228.075	3.1	.1	-2	3.2	.9	.3
Size A - More than 1,500,000	M	230.707	231.808	232.393	232.010	3.0	.1	-2	3.0	.7	.3
Size B/C - 50,000 to 1,500,000 ³	M	137.200	138.174	138.598	138.269	3.5	.1	-2	3.5	1.0	.3
Size classes											
A ⁴	M	203.833	204.963	205.944	205.792	3.3	.4	-1	3.3	1.0	.5
B/C ³	M	138.404	139.413	140.062	139.935	3.9	.4	-1	3.8	1.2	.5
D	M	216.988	218.920	219.873	218.862	3.7	.0	-5	4.3	1.3	.4
Selected local areas⁵											
Chicago-Gary-Kenosha, IL-IN-WI	M	217.880	218.762	220.094	220.182	3.8	.6	.0	3.3	1.0	.6
Los Angeles-Riverside-Orange County, CA ...	M	232.241	233.319	233.367	232.328	2.9	-4	-4	3.1	.5	.0
New York-Northern N.J.-Long Island, NY-NJ-CT-PA	M	245.617	246.489	248.073	248.505	3.2	.8	.2	2.9	1.0	.6
Boston-Brockton-Nashua, MA-NH-ME-CT	1	242.787	-	244.574	-	-	-	-	2.7	.7	-
Cleveland-Akron, OH	1	209.372	-	212.175	-	-	-	-	4.0	1.3	-
Dallas-Fort Worth, TX	1	206.967	-	208.794	-	-	-	-	3.3	.9	-
Washington-Baltimore, DC-MD-VA-WV ⁶	1	146.044	-	147.554	-	-	-	-	3.9	1.0	-
Atlanta, GA	2	-	209.215	-	211.074	3.1	.9	-	-	-	-
Detroit-Ann Arbor-Flint, MI	2	-	211.673	-	213.506	4.2	.9	-	-	-	-
Houston-Galveston-Brazoria, TX	2	-	201.624	-	201.309	3.4	-2	-	-	-	-
Miami-Fort Lauderdale, FL	2	-	231.503	-	231.197	4.0	-1	-	-	-	-
Philadelphia-Wilmington-Atlantic City, PA-NJ-DE-MD	2	-	233.143	-	234.463	2.8	.6	-	-	-	-
San Francisco-Oakland-San Jose, CA	2	-	234.121	-	233.646	2.4	-2	-	-	-	-
Seattle-Tacoma-Bremerton, WA	2	-	231.314	-	233.250	3.2	.8	-	-	-	-

¹ Foods, fuels, and several other items priced every month in all areas; most other goods and services priced as indicated:

M - Every month.

1 - January, March, May, July, September, and November.

2 - February, April, June, August, October, and December.

² Regions defined as the four Census regions. See technical notes.

³ Indexes on a December 1996=100 base.

⁴ Indexes on a December 1986=100 base.

⁵ In addition, the following metropolitan areas are published semiannually and appear in Tables 34 and 39 of the January and July issues of the CPI Detailed Report: Anchorage, AK; Cincinnati-Hamilton, OH-KY-IN; Denver-Boulder-Greeley, CO; Honolulu, HI; Kansas City, MO-KS; Milwaukee-Racine, WI; Minneapolis-St. Paul, MN-WI; Phoenix-Mesa, AZ; Pittsburgh, PA; Portland-Salem, OR-WA; St. Louis, MO-IL; San Diego, CA;

Tampa-St. Petersburg-Clearwater, FL.

⁶ Indexes on a November 1996=100 base.

- Data not available.

NOTE: Local area indexes are byproducts of the national CPI program. Each local index has a smaller sample size than the national index and is, therefore, subject to substantially more sampling and other measurement error. As a result, local area indexes show greater volatility than the national index, although their long-term trends are similar. Therefore, the Bureau of Labor Statistics strongly urges users to consider adopting the national average CPI for use in their escalator clauses.

NOTE: Index applies to a month as a whole, not to any specific date.

Table 4. Consumer Price Index for Urban Wage Earners and Clerical Workers (CPI-W): U.S. city average, by expenditure category and commodity and service group

(1982-84=100, unless otherwise noted)

CPI-W Expenditure category	Relative importance, December 2010	Unadjusted indexes		Unadjusted percent change to June 2011 from—		Seasonally adjusted percent change from—		
		May 2011	June 2011	June 2010	May 2011	Mar. to Apr.	Apr. to May	May to June
All items	100.000	222.954	222.522	4.1	-0.2	0.5	0.1	-0.3
All items (1967=100)	-	664.113	662.826	-	-	-	-	-
Food and beverages	16.401	226.473	226.813	3.7	.2	.5	.4	.2
Food	15.315	226.257	226.610	3.8	.2	.5	.4	.2
Food at home	8.906	224.386	224.580	4.9	.1	.5	.5	.1
Cereals and bakery products	1.236	259.862	261.297	4.2	.6	.2	.9	.6
Meats, poultry, fish, and eggs	2.227	223.356	223.250	7.4	.0	1.1	1.5	-4
Dairy and related products ¹917	210.488	211.374	7.5	.4	1.8	.7	.4
Fruits and vegetables	1.219	281.424	277.853	3.3	-1.3	-1.3	-1.4	-5
Nonalcoholic beverages and beverage materials	1.091	165.160	165.380	3.4	.1	1.2	-.1	.3
Other food at home	2.217	195.396	196.454	3.3	.5	.3	.6	.5
Sugar and sweets ¹324	204.161	206.402	3.9	1.1	-9	.8	1.1
Fats and oils258	216.820	219.304	9.8	1.1	.7	.3	1.3
Other foods	1.635	208.632	209.328	2.2	.3	.4	.6	.2
Other miscellaneous foods ^{1 2}463	123.673	123.911	1.7	.2	.8	-.1	.2
Food away from home ¹	6.409	230.521	231.112	2.3	.3	.4	.2	.3
Other food away from home ^{1 2}326	163.498	163.524	2.5	.0	.3	.1	.0
Alcoholic beverages	1.086	228.197	228.331	2.1	.1	.4	.4	.1
Housing	39.228	215.135	216.263	1.3	.5	.2	.2	.0
Shelter	29.811	244.618	245.112	1.2	.2	.1	.1	.2
Rent of primary residence ³	8.396	250.704	250.843	1.4	.1	.1	.1	.1
Lodging away from home ²436	140.814	147.508	3.5	4.8	.4	2.7	2.6
Owners' equivalent rent of residences ^{3 4}	20.672	234.272	234.634	1.0	.2	.1	.1	.1
Owners' equivalent rent of primary residence ^{3 4}	19.942	234.266	234.630	1.0	.2	.1	.1	.1
Tenants' and household insurance ^{1 2}306	127.859	128.242	1.5	.3	.6	.2	.3
Fuels and utilities	5.633	218.216	223.834	3.1	2.6	.6	.5	-8
Household energy	4.476	191.103	197.253	2.7	3.2	.7	.5	-1.1
Fuel oil and other fuels ¹301	345.830	339.095	26.7	-1.9	1.7	-4	-1.9
Energy services ³	4.175	192.646	199.650	1.2	3.6	.6	.6	-1.0
Water and sewer and trash collection services ²	1.157	178.896	178.981	5.1	.0	.4	.3	.4
Household furnishings and operations	3.784	121.238	121.152	-.5	-.1	.2	.3	-.1
Household operations ^{1 2}364	154.378	154.581	.9	.1	.6	.3	.1
Apparel	3.668	121.312	119.720	1.8	-1.3	.3	1.2	1.4
Men's and boys' apparel921	115.079	114.172	1.6	-.8	.2	1.6	2.3
Women's and girls' apparel	1.502	108.704	106.263	2.2	-2.2	.8	1.1	1.4
Infants' and toddlers' apparel280	114.150	113.203	-2.8	-.8	.3	.8	.6
Footwear750	129.810	128.533	1.2	-1.0	-.4	1.6	.5
Transportation	19.418	222.153	218.155	13.9	-1.8	1.6	-.3	-2.2
Private transportation	18.631	218.946	214.837	14.2	-1.9	1.6	-.3	-2.2
New and used motor vehicles ²	6.914	99.236	100.485	4.2	1.3	.9	1.0	1.1
New vehicles	3.320	143.476	143.995	3.9	.4	.7	1.1	.5
Used cars and trucks	3.003	149.304	152.759	5.2	2.3	1.2	1.1	1.7
Motor fuel	6.470	338.832	319.323	35.5	-5.8	3.2	-2.0	-6.7
Gasoline (all types)	6.193	338.656	318.779	35.6	-5.9	3.3	-2.0	-6.9
Motor vehicle parts and equipment ¹479	143.257	144.458	5.7	.8	.6	1.2	.8
Motor vehicle maintenance and repair ¹	1.184	255.042	255.133	2.0	.0	.2	.4	.0
Public transportation787	268.226	268.615	5.7	.1	.3	-.3	-2.1
Medical care	5.355	401.316	401.398	3.1	.0	.4	.3	.2
Medical care commodities ¹	1.318	316.099	315.710	3.0	-.1	.5	.1	-.1
Medical care services	4.038	426.210	426.498	3.1	.1	.3	.3	.3
Professional services	2.220	338.828	339.198	2.4	.1	.1	.0	.2

See footnotes at end of table.

Table 4. Consumer Price Index for Urban Wage Earners and Clerical Workers (CPI-W): U.S. city average, by expenditure category and commodity and service group-Continued

(1982-84=100, unless otherwise noted)

CPI-W Expenditure category	Relative importance, December 2010	Unadjusted indexes		Unadjusted percent change to June 2011 from—		Seasonally adjusted percent change from—		
		May 2011	June 2011	June 2010	May 2011	Mar. to Apr.	Apr. to May	May to June
Hospital and related services	1.414	642.422	642.513	5.9	0.0	0.5	0.8	0.5
Recreation ²	5.862	110.219	110.216	-1	.0	.0	.3	-1
Video and audio ²	1.959	99.331	99.005	-1.2	-3	-1	.0	-5
Education and communication ²	6.118	124.934	124.906	.4	.0	.0	.1	.1
Education ²	2.380	202.023	202.119	3.8	.0	.3	.5	.2
Educational books and supplies199	528.326	529.103	4.3	.1	.3	.5	.2
Tuition, other school fees, and childcare	2.181	567.600	567.816	3.7	.0	.3	.5	.2
Communication ²	3.738	85.877	85.819	-1.7	-1	-1	-2	.0
Information and information processing ²	3.605	83.534	83.474	-1.9	-1	-1	-2	.0
Telephone services ^{1 2}	2.823	100.610	100.657	-1.3	.0	-1	.0	.0
Information technology, hardware and services ⁵782	9.623	9.575	-4.0	-5	-3	-6	-3
Personal computers and peripheral equipment ⁶208	70.071	68.426	-9.5	-2.3	-5	-6	-1.5
Other goods and services	3.950	414.594	415.514	1.7	.2	.0	-.2	.3
Tobacco and smoking products ¹	1.450	830.137	833.452	2.7	.4	-.4	-.2	.4
Personal care	2.500	205.919	206.165	1.1	.1	.2	-.2	.3
Personal care products ¹717	160.083	160.780	.6	.4	.3	-1.2	.4
Personal care services ¹572	230.709	230.814	.1	.0	.1	.0	.0
Miscellaneous personal services	1.027	363.466	364.113	2.5	.2	.4	.2	.1
Commodity and service group								
Commodities	43.898	191.543	189.779	7.3	-.9	.9	.0	-.8
Food and beverages	16.401	226.473	226.813	3.7	.2	.5	.4	.2
Commodities less food and beverages	27.497	171.531	168.922	9.5	-1.5	1.1	-.2	-1.4
Nondurables less food and beverages	17.244	230.306	223.944	13.9	-2.8	1.3	.0	-2.1
Apparel	3.668	121.312	119.720	1.8	-1.3	.3	1.2	1.4
Nondurables less food, beverages, and apparel	13.576	302.815	293.390	17.3	-3.1	1.5	-.5	-3.2
Durables	10.253	114.560	115.461	2.4	.8	.6	.8	.7
Services	56.102	260.062	261.122	1.5	.4	.2	.2	.0
Rent of shelter ⁴	29.504	235.734	236.207	1.2	.2	.1	.1	.1
Tenants' and household insurance ^{1 2}306	127.859	128.242	1.5	.3	.6	.2	.3
Energy services ³	4.175	192.646	199.650	1.2	3.6	.6	.6	-1.0
Water and sewer and trash collection services ²	1.157	178.896	178.981	5.1	.0	.4	.3	.4
Household operations ^{1 2}364	154.378	154.581	.9	.1	.6	.3	.1
Transportation services	5.994	267.729	268.122	3.1	.1	.3	.2	-.1
Medical care services	4.038	426.210	426.498	3.1	.1	.3	.3	.3
Other services	10.563	298.779	298.819	.9	.0	.1	.2	.0
Special indexes								
All items less food	84.685	222.174	221.604	4.1	-.3	.5	.1	-.4
All items less shelter	70.189	217.445	216.673	5.3	-.4	.7	.1	-.6
All items less medical care	94.645	215.660	215.216	4.1	-.2	.5	.1	-.4
Commodities less food	28.583	173.603	171.059	9.2	-1.5	1.1	-.1	-1.3
Nondurables less food	18.329	230.472	224.451	13.2	-2.6	1.3	.0	-2.0
Nondurables less food and apparel	14.662	295.146	286.570	16.2	-2.9	1.4	-.4	-3.0
Nondurables	33.644	229.820	226.570	8.9	-1.4	1.0	.2	-1.3
Services less rent of shelter ⁴	26.598	255.643	257.266	2.0	.6	.3	.3	-.1
Services less medical care services	52.065	248.528	249.607	1.4	.4	.2	.2	.0
Energy	10.946	263.494	256.663	21.0	-2.6	2.3	-1.1	-4.6
All items less energy	89.054	219.041	219.383	2.0	.2	.3	.3	.2
All items less food and energy	73.739	217.966	218.306	1.7	.2	.2	.3	.3
Commodities less food and energy commodities	21.812	148.045	148.321	1.9	.2	.4	.6	.6
Energy commodities	6.771	340.895	321.775	35.1	-5.6	3.1	-1.9	-6.5
Services less energy services	51.927	267.410	267.791	1.6	.1	.1	.2	.1
Purchasing power of the consumer dollar (1982-84=\$1.00)	-	\$.449	\$.449	-	-	-	-	-
Purchasing power of the consumer dollar (1967=\$1.00)	-	\$.151	\$.151	-	-	-	-	-

¹ Not seasonally adjusted.

² Indexes on a December 1997=100 base.

³ This index series was calculated using a Laspeyres estimator. All other item stratum index series were calculated using a geometric means estimator.

⁴ Indexes on a December 1984=100 base

⁵ Indexes on a December 1988=100 base.

⁶ Indexes on a December 2007=100 base.

- Data not available.

NOTE: Index applies to a month as a whole, not to any specific date.

Table 5. Consumer Price Index for Urban Wage Earners and Clerical Workers (CPI-W): Seasonally adjusted U.S. city average, by expenditure category and commodity and service group

(1982-84=100, unless otherwise noted)

CPI-W	Seasonally adjusted indexes				Seasonally adjusted annual rate percent change for					
					3 months ended—			6 months ended—		
	Mar. 2011	Apr. 2011	May 2011	June 2011	Sep. 2010	Dec. 2010	Mar. 2011	June 2011	Dec. 2010	June 2011
Expenditure category										
All items	220.122	221.212	221.529	220.768	3.6	3.8	7.1	1.2	3.7	4.1
Food and beverages	224.691	225.708	226.540	226.929	2.0	1.6	7.3	4.0	1.8	5.6
Food	224.464	225.485	226.319	226.723	1.9	1.7	7.7	4.1	1.8	5.9
Food at home	222.200	223.322	224.492	224.769	1.6	2.0	11.5	4.7	1.8	8.0
Cereals and bakery products	256.158	256.620	259.020	260.567	2.1	2.2	5.6	7.1	2.1	6.3
Meats, poultry, fish, and eggs	218.838	221.143	224.521	223.720	3.9	2.9	13.9	9.2	3.4	11.5
Dairy and related products ¹	205.163	208.951	210.488	211.374	2.4	6.5	8.6	12.7	4.4	10.6
Fruits and vegetables	288.166	284.305	280.367	278.965	-2.2	6.0	25.0	-12.2	1.8	4.8
Nonalcoholic beverages and beverage materials	163.753	165.778	165.582	166.036	1.2	-3.1	10.3	5.7	-1.0	8.0
Other food at home	193.640	194.133	195.230	196.198	1.0	-3	7.3	5.4	.4	6.3
Sugar and sweets ¹	204.408	202.613	204.161	206.402	4.9	2.5	4.4	4.0	3.7	4.2
Fats and oils	214.678	216.271	216.992	219.872	2.1	3.3	25.4	10.0	2.7	17.5
Other foods	206.374	207.193	208.363	208.866	.1	-1.3	5.2	4.9	-6	5.1
Other miscellaneous foods ^{1 2}	122.850	123.797	123.673	123.911	1.1	.3	1.9	3.5	.7	2.7
Food away from home ¹	229.293	230.174	230.521	231.112	2.4	1.2	2.5	3.2	1.8	2.9
Other food away from home ^{1 2}	162.850	163.275	163.498	163.524	2.9	2.3	3.0	1.7	2.6	2.3
Alcoholic beverages	226.591	227.525	228.327	228.503	2.7	.5	1.7	3.4	1.6	2.5
Housing	214.579	214.943	215.372	215.369	.5	1.3	2.0	1.5	.9	1.7
Shelter	244.098	244.287	244.622	245.029	.5	1.4	1.3	1.5	.9	1.4
Rent of primary residence ³	250.220	250.444	250.687	250.938	.6	2.1	1.8	1.2	1.3	1.5
Lodging away from home ²	135.526	136.073	139.738	143.333	-6.3	-1.0	-1.1	25.1	-3.7	11.2
Owners' equivalent rent of residences ^{3 4}	233.967	234.102	234.326	234.643	.5	1.2	1.3	1.2	.9	1.2
Owners' equivalent rent of primary residence ^{3 4}	233.963	234.097	234.320	234.639	.5	1.2	1.3	1.2	.9	1.2
Tenants' and household insurance ^{1 2}	126.914	127.654	127.859	128.242	4.4	-1	-2.4	4.3	2.1	.9
Fuels and utilities	217.690	219.052	220.111	218.367	2.3	2.7	6.5	1.2	2.5	3.9
Household energy	190.781	192.083	193.096	190.982	1.8	2.2	6.6	.4	2.0	3.5
Fuel oil and other fuels ¹	341.440	347.371	345.830	339.095	-6	57.8	68.8	-2.7	25.2	28.1
Energy services ³	192.493	193.645	194.818	192.818	1.9	-8	3.0	.7	.6	1.8
Water and sewer and trash collection services ²	177.954	178.669	179.223	179.953	4.5	5.0	6.3	4.6	4.7	5.4
Household furnishings and operations	120.458	120.697	121.006	120.881	-2.2	-1.3	.2	1.4	-1.7	.8
Household operations ^{1 2}	152.965	153.923	154.378	154.581	-1.0	.7	-.4	4.3	-2	1.9
Apparel	117.667	118.059	119.528	121.203	-2.3	-9	-1.5	12.6	-1.6	5.3
Men's and boys' apparel	110.496	110.770	112.512	115.078	-4.4	-2.4	-2.9	17.6	-3.4	6.9
Women's and girls' apparel	104.954	105.750	106.951	108.462	-1.8	-6	-1.9	14.1	-1.2	5.8
Infants' and toddlers' apparel	112.693	112.979	113.863	114.525	-4.9	1.7	-13.7	6.7	-1.6	-4.0
Footwear	127.212	126.695	128.720	129.412	-1.3	-3.6	2.9	7.1	-2.5	5.0
Transportation	212.833	216.214	215.500	210.835	16.2	16.7	26.0	-3.7	16.5	10.2
Private transportation	209.373	212.808	212.103	207.502	17.0	16.8	26.3	-3.5	16.9	10.4
New and used motor vehicles ²	97.462	98.310	99.292	100.337	2.1	-1.6	4.3	12.3	.2	8.3
New vehicles	141.132	142.121	143.630	144.411	1.2	-1.4	6.4	9.6	-1	8.0
Used cars and trucks	145.911	147.635	149.198	151.670	4.4	-2.1	2.5	16.7	1.1	9.4
Motor fuel	308.827	318.736	312.340	291.497	54.2	57.0	75.4	-20.6	55.6	18.0
Gasoline (all types)	307.739	318.025	311.697	290.345	55.6	60.0	71.3	-20.8	57.8	16.5
Motor vehicle parts and equipment ¹	140.693	141.505	143.257	144.458	3.0	4.2	4.5	11.1	3.6	7.8
Motor vehicle maintenance and repair ¹	253.391	253.990	255.042	255.133	2.9	1.3	1.0	2.8	2.1	1.9
Public transportation	268.996	269.886	269.065	263.506	-7	13.8	20.2	-7.9	6.3	5.2
Medical care	398.099	399.544	400.682	401.374	3.3	2.6	2.9	3.3	3.0	3.1
Medical care commodities ¹	314.190	315.798	316.099	315.710	1.2	2.0	7.1	1.9	1.6	4.5
Medical care services	422.517	423.843	425.316	426.464	4.0	2.8	1.6	3.8	3.4	2.7
Professional services	337.449	337.866	337.966	338.809	3.6	1.9	2.4	1.6	2.8	2.0

See footnotes at end of table.

Table 5. Consumer Price Index for Urban Wage Earners and Clerical Workers (CPI-W): Seasonally adjusted U.S. city average, by expenditure category and commodity and service group-Continued

(1982-84=100, unless otherwise noted)

CPI-W	Seasonally adjusted indexes				Seasonally adjusted annual rate percent change for					
					3 months ended—			6 months ended—		
	Mar. 2011	Apr. 2011	May 2011	June 2011	Sep. 2010	Dec. 2010	Mar. 2011	June 2011	Dec. 2010	June 2011
Expenditure category										
Hospital and related services	632.454	635.892	641.005	644.001	6.9	6.5	2.7	7.5	6.7	5.1
Recreation ²	109.798	109.747	110.076	110.001	-2.0	-2.2	3.2	.7	-2.1	2.0
Video and audio ²	99.167	99.080	99.080	98.575	-2.8	-2.7	3.0	-2.4	-2.7	.3
Education and communication ²	125.167	125.225	125.340	125.440	1.0	-9	.7	.9	.0	.8
Education ²	202.290	202.814	203.768	204.259	2.1	4.1	5.0	4.0	3.1	4.5
Educational books and supplies	526.817	528.629	531.355	532.591	-1.0	5.7	8.4	4.5	2.3	6.4
Tuition, other school fees, and childcare	568.569	569.997	572.656	574.039	2.4	4.0	4.7	3.9	3.2	4.3
Communication ²	86.067	85.989	85.857	85.836	.3	-4.0	-2.0	-1.1	-1.9	-1.5
Information and information processing ²	83.735	83.651	83.513	83.492	.3	-4.2	-2.6	-1.2	-1.9	-1.9
Telephone services ^{1 2}	100.701	100.643	100.610	100.657	1.2	-3.8	-2.4	-.2	-1.4	-1.3
Information technology, hardware and services ⁵	9.699	9.674	9.612	9.584	-2.8	-5.3	-3.4	-4.7	-4.0	-4.0
Personal computers and peripheral equipment ⁶	70.542	70.196	69.761	68.685	.5	-12.6	-15.1	-10.1	-6.3	-12.7
Other goods and services	414.916	414.900	414.012	415.446	4.4	1.2	.6	.5	2.8	.6
Tobacco and smoking products ¹	835.368	832.003	830.137	833.452	8.9	1.9	1.3	-.9	5.3	.2
Personal care	205.424	205.891	205.463	206.112	2.0	.8	.3	1.3	1.4	.8
Personal care products ¹	161.667	162.088	160.083	160.780	3.1	.2	1.1	-2.2	1.7	-.5
Personal care services ¹	230.252	230.597	230.709	230.814	.3	-.5	-.1	1.0	-.1	.4
Miscellaneous personal services	360.899	362.235	363.012	363.440	2.8	3.0	1.5	2.8	2.9	2.2
Commodity and service group										
Commodities	186.856	188.512	188.580	187.064	6.8	7.0	14.1	.4	6.9	7.0
Food and beverages	224.691	225.708	226.540	226.929	2.0	1.6	7.3	4.0	1.8	5.6
Commodities less food and beverages	165.737	167.620	167.363	165.079	9.9	10.3	18.2	-1.6	10.1	7.9
Nondurables less food and beverages	219.564	222.388	222.447	217.845	15.3	20.3	25.1	-3.1	17.8	10.1
Apparel	117.667	118.059	119.528	121.203	-2.3	-.9	-1.5	12.6	-1.6	5.3
Nondurables less food, beverages, and apparel	287.991	292.312	290.849	281.604	22.8	25.2	34.8	-8.6	24.0	11.0
Durables	112.981	113.705	114.560	115.400	.3	-3.2	4.0	8.8	-1.5	6.4
Services	259.346	259.786	260.366	260.433	1.1	1.3	2.0	1.7	1.2	1.9
Rent of shelter ⁴	235.189	235.375	235.649	235.908	.8	1.9	.8	1.2	1.3	1.0
Tenants' and household insurance ^{1 2}	126.914	127.654	127.859	128.242	4.4	-.1	-2.4	4.3	2.1	.9
Energy services ³	192.493	193.645	194.818	192.818	1.9	-.8	3.0	.7	.6	1.8
Water and sewer and trash collection services ²	177.954	178.669	179.223	179.953	4.5	5.0	6.3	4.6	4.7	5.4
Household operations ^{1 2}	152.965	153.923	154.378	154.581	-1.0	.7	-.4	4.3	-.2	1.9
Transportation services	266.766	267.612	268.275	267.896	2.2	3.3	5.2	1.7	2.8	3.4
Medical care services	422.517	423.843	425.316	426.464	4.0	2.8	1.6	3.8	3.4	2.7
Other services	298.163	298.388	299.096	299.140	.7	.0	1.7	1.3	.3	1.5
Special indexes										
All items less food	219.161	220.262	220.488	219.523	3.9	4.2	7.0	.7	4.0	3.8
All items less shelter	213.745	215.173	215.486	214.295	4.9	4.8	9.6	1.0	4.9	5.2
All items less medical care	212.864	213.934	214.223	213.426	3.6	3.9	7.4	1.1	3.7	4.2
Commodities less food	167.903	169.766	169.536	167.311	9.6	9.9	17.5	-1.4	9.8	7.7
Nondurables less food	220.224	223.009	223.118	218.640	14.7	19.1	23.7	-2.8	16.9	9.6
Nondurables less food and apparel	281.517	285.598	284.399	275.970	21.1	23.2	32.2	-7.7	22.1	10.5
Nondurables	223.418	225.644	226.125	223.294	8.5	10.9	17.0	-.2	9.7	8.0
Services less rent of shelter ⁴	254.803	255.550	256.332	255.986	1.5	1.8	2.7	1.9	1.6	2.3
Services less medical care services	247.897	248.319	248.874	248.840	.9	1.7	1.6	1.5	1.3	1.5
Energy	248.232	253.853	251.126	239.606	28.3	31.3	44.5	-13.2	29.8	12.0
All items less energy	217.702	218.248	218.935	219.475	1.1	.8	3.0	3.3	.9	3.1
All items less food and energy	216.717	217.167	217.826	218.395	.9	.7	2.0	3.1	.8	2.6
Commodities less food and energy commodities	146.215	146.774	147.607	148.509	.4	-1.3	2.1	6.4	-.4	4.2
Energy commodities	311.719	321.527	315.284	294.876	51.2	57.0	75.1	-19.9	54.1	18.4
Services less energy services	266.630	266.988	267.500	267.802	1.1	1.5	2.0	1.8	1.3	1.9

¹ Not seasonally adjusted.

² Indexes on a December 1997=100 base.

³ This index series was calculated using a Laspeyres estimator. All other item stratum index series were calculated using a geometric means estimator.

⁴ Indexes on a December 1984=100 base

⁵ Indexes on a December 1988=100 base.

⁶ Indexes on a December 2007=100 base.

NOTE: Index applies to a month as a whole, not to any specific date.

Table 6. Consumer Price Index for Urban Wage Earners and Clerical Workers (CPI-W): Selected areas, all items index

(1982-84=100, unless otherwise noted)

CPI-W	Pricing schedule 1	All items									
		Indexes				Percent change to June2011 from—			Percent change to May2011 from—		
		Mar. 2011	Apr. 2011	May 2011	June 2011	June 2010	Apr. 2011	May 2011	May 2010	Mar. 2011	Apr. 2011
U.S. city average	M	220.024	221.743	222.954	222.522	4.1	0.4	-0.2	4.1	1.3	0.5
Region and area size²											
Northeast urban	M	237.377	238.756	240.209	240.158	3.8	.6	.0	3.7	1.2	.6
Size A - More than 1,500,000	M	237.239	238.390	239.852	239.972	3.6	.7	.1	3.5	1.1	.6
Size B/C - 50,000 to 1,500,000 ³	M	144.395	145.520	146.390	146.144	4.2	.4	-2	4.2	1.4	.6
Midwest urban	M	209.094	210.991	212.572	212.556	4.4	.7	.0	4.4	1.7	.7
Size A - More than 1,500,000	M	208.740	210.508	212.272	212.147	4.5	.8	-.1	4.4	1.7	.8
Size B/C - 50,000 to 1,500,000 ³	M	137.189	138.552	139.532	139.738	4.4	.9	.1	4.3	1.7	.7
Size D - Nonmetropolitan (less than 50,000)	M	208.108	209.987	211.052	210.516	4.4	.3	-.3	4.5	1.4	.5
South urban	M	215.272	217.234	218.437	217.722	4.4	.2	-.3	4.6	1.5	.6
Size A - More than 1,500,000	M	216.680	218.615	219.971	219.263	3.9	.3	-.3	4.2	1.5	.6
Size B/C - 50,000 to 1,500,000 ³	M	137.789	138.962	139.744	139.407	4.6	.3	-.2	4.6	1.4	.6
Size D - Nonmetropolitan (less than 50,000)	M	223.059	225.869	226.539	224.807	4.4	-.5	-.8	5.5	1.6	.3
West urban	M	221.830	223.268	223.944	223.237	3.5	.0	-.3	3.7	1.0	.3
Size A - More than 1,500,000	M	224.576	225.833	226.399	225.670	3.4	-.1	-.3	3.6	.8	.3
Size B/C - 50,000 to 1,500,000 ³	M	137.331	138.362	138.816	138.392	3.7	.0	-.3	3.8	1.1	.3
Size classes											
A ⁴	M	203.220	204.607	205.758	205.415	3.8	.4	-.2	3.9	1.2	.6
B/C ³	M	138.471	139.645	140.412	140.179	4.3	.4	-.2	4.3	1.4	.5
D	M	215.928	218.220	219.159	218.067	4.2	-.1	-.5	4.8	1.5	.4
Selected local areas⁵											
Chicago-Gary-Kenosha, IL-IN-WI	M	212.256	213.633	215.358	215.325	4.6	.8	.0	4.2	1.5	.8
Los Angeles-Riverside-Orange County, CA ...	M	225.770	227.051	226.842	225.461	3.3	-.7	-.6	3.7	.5	-.1
New York-Northern N.J.-Long Island, NY-NJ-CT-PA	M	241.667	242.697	244.316	244.601	3.7	.8	.1	3.5	1.1	.7
Boston-Brockton-Nashua, MA-NH-ME-CT	1	244.324	-	246.825	-	-	-	-	3.3	1.0	-
Cleveland-Akron, OH	1	201.146	-	204.105	-	-	-	-	4.4	1.5	-
Dallas-Fort Worth, TX	1	211.227	-	214.038	-	-	-	-	4.3	1.3	-
Washington-Baltimore, DC-MD-VA-WV ⁶	1	146.572	-	148.638	-	-	-	-	4.6	1.4	-
Atlanta, GA	2	-	208.356	-	210.598	3.2	1.1	-	-	-	-
Detroit-Ann Arbor-Flint, MI	2	-	208.217	-	210.354	4.8	1.0	-	-	-	-
Houston-Galveston-Brazoria, TX	2	-	200.997	-	200.444	4.0	-.3	-	-	-	-
Miami-Fort Lauderdale, FL	2	-	229.675	-	229.353	4.1	-.1	-	-	-	-
Philadelphia-Wilmington-Atlantic City, PA-NJ-DE-MD	2	-	233.441	-	234.965	3.0	.7	-	-	-	-
San Francisco-Oakland-San Jose, CA	2	-	231.600	-	230.605	2.9	-.4	-	-	-	-
Seattle-Tacoma-Bremerton, WA	2	-	228.313	-	230.072	3.7	.8	-	-	-	-

¹ Foods, fuels, and several other items priced every month in all areas; most other goods and services priced as indicated:

M - Every month.

1 - January, March, May, July, September, and November.

2 - February, April, June, August, October, and December.

² Regions defined as the four Census regions. See technical notes.

³ Indexes on a December 1996=100 base.

⁴ Indexes on a December 1986=100 base.

⁵ In addition, the following metropolitan areas are published semiannually and appear in Tables 34 and 39 of the January and July issues of the CPI Detailed Report: Anchorage, AK; Cincinnati-Hamilton, OH-KY-IN; Denver-Boulder-Greeley, CO; Honolulu, HI; Kansas City, MO-KS; Milwaukee-Racine, WI; Minneapolis-St. Paul, MN-WI; Phoenix-Mesa, AZ; Pittsburgh, PA; Portland-Salem, OR-WA; St. Louis, MO-IL; San Diego, CA;

Tampa-St. Petersburg-Clearwater, FL.

⁶ Indexes on a November 1996=100 base.

- Data not available.

NOTE: Local area indexes are byproducts of the national CPI program. Each local index has a smaller sample size than the national index and is, therefore, subject to substantially more sampling and other measurement error. As a result, local area indexes show greater volatility than the national index, although their long-term trends are similar. Therefore, the Bureau of Labor Statistics strongly urges users to consider adopting the national average CPI for use in their escalator clauses.

NOTE: Index applies to a month as a whole, not to any specific date.

Table 7. Chained Consumer Price Index for All Urban Consumers (C-CPI-U): U.S. city average, by expenditure category and commodity and service group

(December 1999=100, unless otherwise noted)

C-CPI-U	Relative importance, 2007-2008	Unadjusted indexes		Unadjusted percent change to June 2011 from—	
		May 2011	June 2011	June 2010	May 2011
Expenditure category					
All items	100.000	129.947	129.845	3.4	-0.1
Food and beverages	14.519	132.139	132.333	3.5	.1
Food	13.493	132.312	132.514	3.7	.2
Food at home	7.780	128.239	128.341	4.6	.1
Food away from home	5.712	137.864	138.213	2.3	.3
Alcoholic beverages	1.027	130.585	130.679	1.8	.1
Housing	42.074	129.414	129.998	1.2	.5
Shelter	32.119	132.401	132.740	1.2	.3
Fuels and utilities	5.231	161.220	164.679	3.0	2.1
Household furnishings and operations	4.724	92.735	92.656	-8	-1
Apparel	3.772	91.536	90.190	1.4	-1.5
Transportation	17.199	147.954	145.972	12.7	-1.3
Private transportation	16.013	149.155	146.973	13.2	-1.5
Public transportation	1.186	132.800	133.254	5.6	.3
Medical care	6.294	154.437	154.508	2.7	.0
Medical care commodities	1.570	136.610	136.490	2.8	-1
Medical care services	4.723	160.971	161.116	2.7	.1
Recreation	6.625	102.724	102.654	-1.0	-1
Education and communication	6.288	112.573	112.491	.5	-1
Education	2.804	188.805	188.948	3.7	.1
Communication	3.484	71.485	71.347	-2.0	-2
Other goods and services	3.229	142.007	142.216	2.4	.1
Commodity and service group					
Services	59.383	137.342	137.855	1.5	.4
Commodities	40.617	121.173	120.282	6.1	-7
Durables	10.376	81.572	81.957	1.1	.5
Nondurables	30.241	141.964	140.337	7.9	-1.1
All items less food and energy	76.901	121.566	121.726	1.4	.1
Energy	9.606	219.734	215.197	19.7	-2.1

Indexes for 2011 are initial estimates. Indexes for 2010 are interim adjustments.
NOTE: Index applies to a month as a whole, not to any specific date.