

SEASONAL AREA CLOSURE**OCHOCO NATIONAL FOREST
HENDERSON FLAT OFF HIGHWAY VEHICLE TRAIL SYSTEM**

Pursuant to 16 USC 551, 36 CFR§261.50 (a) and (b), the following special restrictions and prohibitions are established on Forest Trails within the Henderson Flat OHV Trail System area on the Ochoco National Forest, Crooked River National Grassland, in the State of Oregon, from the annual dates of **December 1 to March 31**. The Henderson Flat OHV Trail System is located at Township 13 south Range 13 east Sections 14, 15, 22, and 23. The Henderson Flat OHV Trail System is contained within the boundary lines depicted on the attached map, hereby incorporated in this Order as Page 2 of 2.

PROHIBITIONS

It is prohibited to possess or operate any motor vehicle on Forest Development Trails 36 CFR § 261.55(b)

This restriction is in addition to those prohibitions enumerated in Subpart A of 36CFR§261 and any other special restrictions pertaining to the described lands.

EXEMPTIONS

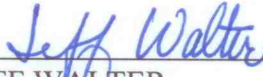
Pursuant to 36 CFR§261.50(e), the following persons are exempt from this order:

1. Personnel with written authorization by a Forest Officer, which specifically authorizes the otherwise prohibited act or omission. The issuing Officer may include such conditions as are considered necessary for the protection of the area, or for the promotion of the health, safety, or welfare of its users.
2. Any Federal, State, or local Officer or volunteer in the performance of an official duty.
3. Persons or their invitees who live or own property within the closure area, and permittees who have a legitimate need to access their permitted allotment.

This closure is enacted and necessary for the protection and proper function of soils, wildlife and hydrology in the area as specified in the Henderson Flat OHV NEPA Decision Notice.

This Order becomes effective at 12AM, December 15, 2009, and will remain in force until rescinded.

Done at Prineville, Oregon, this 14th day of December, 2009



JEFF WALTER
Forest Supervisor
Ochoco National Forest

VIOLATION OF THESE PROHIBITIONS IS PUNISHABLE AS A CLASS B MISDEMEANOR, BY A FINE OF NOT MORE THAN \$5,000 FOR AN INDIVIDUAL OR \$10,000 FOR A LEGAL ENTITY OTHER THAN AN INDIVIDUAL, OR IMPRISONMENT FOR NOT MORE THAN SIX (6) MONTHS, OR BOTH. TITLE 16 USC, SECTION 551; TITLE 18 USC, SECTION 3551.

HENDERSON FLAT OHV TRAIL SYSTEM

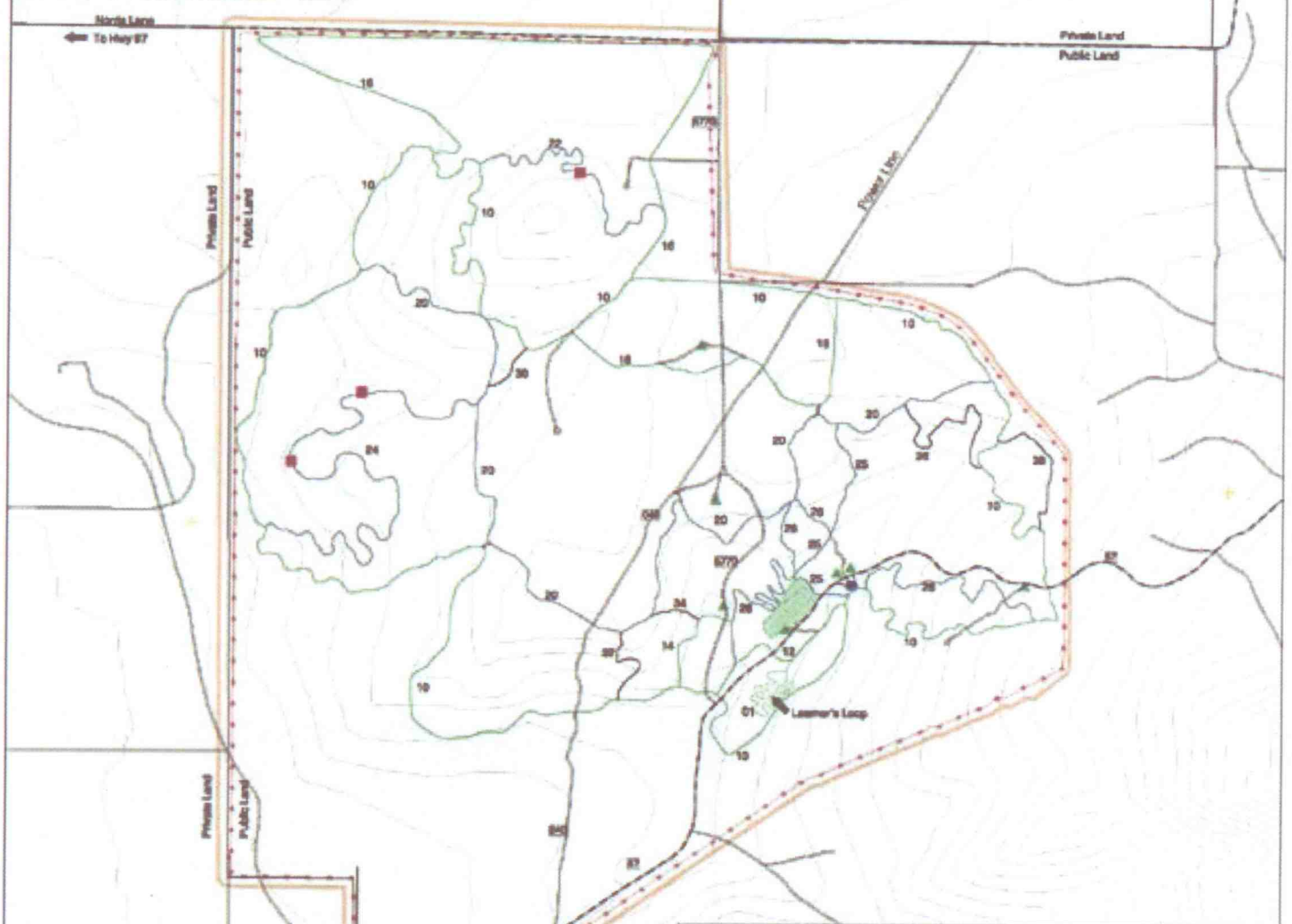


Season of Use

Open: April 1 - November 30
 Closed: December 1 - March 31 to protect soils.
 Any trail closures or changes in use restrictions will be posted on the map boards at the trailheads and staging areas.

Location

Township: 18 N
 Range: 13 E
 Section: 14, 15, 22, 23
 The future of this trail system depends on you! Respect the land, the wildlife, and the rights of others. "Tread Lightly!"



How To Get There

From Madras:
 Drive south on Highway 97 for 13.0 miles. Turn left on North Lane and travel east for 2.3 miles.
OR
 Drive south on Highway 97 for 14.0 miles. Turn left on Park Lane and travel east for 2.3 miles.

Legend

- OHV Trail System Boundary
- Easier Trails
- More Difficult Trails
- Most Difficult Trails
- Fence
- Campsite
- Staging Area
- Viewpoint
- Play Area
- Main Road Numbers
- OH Trail Numbers

