

*E
N
V
I
R
O
N
M
E
N
T
A
L*

2006

CLARK COUNTY

*H
A
N
D
B
O
O
K*



*'CARING FOR CLARK COUNTY'S
ENVIRONMENT'*



**Clark County Solid Waste
Management District
256-7942**

While overseeing the county recycling programs, the District may have answers to some of your special problem waste and disposal questions.

9208 Highway 62

Charlestown, Indiana 47111-8409


(812) 256-7942 • Toll Free: 1-800-357-2040

Cubside Billing: (812) 256-7943

Fax: (812) 256-4079 • Email: recycle@talkamerica.net

Open Monday through Friday 8:00am - 5:00pm

*This brochure is funded through a grant from the Indiana Department of Environmental Management.

A green-tinted line drawing of a house. It has a gabled roof, a chimney on the left side with two windows, and a front door with a small window. There are bushes in front of the house.

***Clark County
Household
Hazardous Waste
Collection Center***

***Protect Your Home & Family
Call for appointment: 256-7942***

Table of Contents

Your Community

Curbside Recycling	4-5
Dropoff Recycling	6
Borden	7
Charlestown	8
Clarksville	9
Jeffersonville	10
Sellersburg	11
Utica	12
Unincorporated Area	12

Help Our Land

Composting	13
Yard Waste	13
Construction, Demolition & Recycling Dumpsters	13
Household Hazardous Waste	14
Latex Paint	15
Items Containing Mercury	16
Oil Based Paint	16
Stains & Solvents	16
Computers, Cell Phones	17
Ink Jet Cartridge	17
Motor Oil, Oil Filter & Antifreeze	18-19
Batteries	20-21
Propane Tanks and Sharps	21

Help Our Water

Non Point Sourced Pollution	22
Urban Runoff	23
Drinking Water	23
Fertilizer	24
Soil Erosion	25
Septic System	26
Water Conservation	27

Local Companies	28-31
------------------------	--------------

CURBSIDE RECYCLING

Good Job Clark County! with all our residents working together on this program we have diverted over 27% of our waste from our landfill. This mandatory program began after voluntary recycling efforts failed. It is easy and more convenient than the old voluntary program and items are collected from your residence every other week.

Purchasing Bins

If you need a new or additional bin, they are available at the District Office. Bins are sold at cost, which is presently \$5.50. Other items such as lids, carts, and wheel and handle sets are available, at cost, at the District office.



Yearly Fee

Each household in the curbside area incurs a yearly fee. If you are a property owner in Clark County, you should receive an invoice in January each year. If you do not receive the statement, call 256-7942 after February 15th.

If you happen to sell your home during the year, call the District office before closing to receive the prorated amount that you may collect from your buyers at closing. If you move to another address in Clark County, your outstanding fee will transfer with you to your new address. For questions, call 256-7942.

Holiday Schedule

Bins are collected on all holidays except:
Thanksgiving, Christmas, and New Year's Day.



Bins set out after 7:00am will not be collected.

What Items Are To Be Recycled?

The only items which are to be placed in the orange recycle bin are:

- ♻️ Newspapers (Slicks and ads are OK)
- ♻️ Aluminum cans
- ♻️ Glass bottles and jars (all colors, NO plate glass, mirrors or dishes)
- ♻️ Tin cans such as soup or vegetable cans
- ♻️ Milk jugs
- ♻️ Soda bottles
- ♻️ #1 & #2 plastic bottles, except oil, antifreeze bottles or bottles that had chemicals in them. Bottles only, look for the recycle emblem with #1 or #2 in it.
- ♻️ Flattened corrugated cardboard
- ♻️ Flattened paperboard boxes such as cereal, shoe or cracker boxes
- ♻️ Junk Mail, Phonebooks, Magazines



*Curbside trucks start picking up at 7:00 am,
Have your bin out early.*

How Are Recyclables to be Prepared?

It is important to properly prepare all items prior to placing them in the recycling bin.

Rinse all cans, jars, and bottles

Remove all caps, rings, lids, plastic bags

Recyclables are to be placed loose in the bin, no plastic bags. Flatten all cardboard & paperboard boxes.

Flatten soda bottles and milk jugs to save space in your bin.



The recycle emblem on products means that the item was produced using recycled goods. It does not mean that the item is recyclable in this program or in all parts of the country.

If you are unsure if the item you have is recyclable, call the District at 256-7942.

CLARK COUNTY DROP OFF RECYCLING PROGRAM

Where Are The Bins Located?

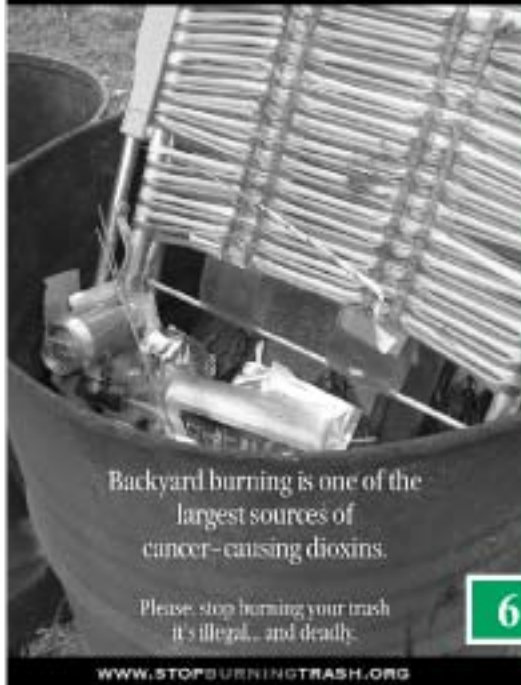
- ⊕ INDOT Substation, 5701 Hwy. 31, Clarksville
- ⊕ Clark County Solid Waste District Office

What Items Are Accepted?

- ⊕ Aluminum Cans
- ⊕ Newspapers
- ⊕ Phonebooks
- ⊕ Flattened Cardboard
- ⊕ Glass Bottles & Jars
- ⊕ Steel "Tin" Cans
- ⊕ Magazines
- ⊕ Junk Mail
- ⊕ Flattened Paperboard
- ⊕ Plastic Milk Jugs, Water and Soda Bottles
- ⊕ #1 & #2 Plastic Bottles, *except oil, bleach, and antifreeze bottles or bottles that contained chemicals. Bottles only, with the recycling emblem with the #1 or #2 inside.*

Indiana State Law
Prohibits the burning of trash.

Are you still burning your trash?



Backyard burning is one of the largest sources of cancer-causing dioxins.

Please, stop burning your trash
it's illegal... and deadly.

WWW.STOPBURNINGTRASH.ORG

TOWN OF BORDEN

Pat Kelly - Town Manager
967-2234

email: townofborden@insightbb.com

Garbage Collection:

Residents who live in the town limits of Borden receive curbside trash collection at no charge, on Friday. Cans should be out by 7:00 am.



Recycling Bins:

All Residents are included in the Clark County Curbside Recycling Program. For more information call toll free: 1-800-357-2040.



**Ask us how to Recycle
your Christmas Tree**

Call 256-7942



CITY OF CHARLESTOWN

Charlestown Street & Sanitation Department
256-3422

Garbage Collection:

is provided on a weekly basis.
City cans are to be out by 5:30 am.

Rubbish Pick-up:

Contact City Hall for collection.



Refrigerators/Air Conditioners:

Federal law requires that the Freon in these items must be certified out and tagged by an individual who is licensed to do this type of service. The City of Charlestown provides pick-up service for its residents, and realizes no profit from the fee that is charged by the Landfill to have these items certified and disposed of properly.

BEFORE a refrigerator or air conditioner will be picked up, residents must pay a \$40.00 fee (subject to change), at the Mayor's Office, 304 Main Cross, Charlestown, for this certification and disposal.

Tires:

BEFORE, a tire will be picked-up, residents must pay a fee (subject to change) for each tire, at the Mayor's Office, 304 Main Cross, Charlestown, for this disposal.

\$6.00 car tires

\$10.00 truck tires

TOWN OF CLARKSVILLE

Clarksville Street Department
283-8233




Garbage Collection:

is provided by the Clarksville Street Department on a weekly basis. Contact the Street Department.

Yard Waste:

Accepted from the first week of April through the last week of December.

 **PICK UP SERVICE:** Collected on Monday and Tuesday.

Residents must place yard waste in a 90-gallon container marked "YARD WASTE." The container is available for pick up at Smith Equipment Company, 401 East 11th St., Jeffersonville, 283-0001.

The cost of the container is presently \$73.00 (price subject to change). Once you have purchased your container call the Street Department to be placed on the yard waste collection route.

DROP OFF SERVICE AVAILABLE: If you do not wish to purchase a container, you may bring your yard waste to the Clarksville Street Department, 107 Roy Cole Drive (off Harrison Avenue). This is limited to Clarksville residents only, no contractors allowed. Bins are available inside the gate at the following times: Monday-Wednesday, 7am-6pm, Tuesday, Thursday, Friday, 7am -3pm and Saturday, 12pm - 2pm.

LIMBS: Will be picked up on a weekly basis by the chipper truck. Place them beside your trash can. The chipper truck route runs the same day as your garbage pick-up.

LEAVES: Beginning the last week of October and continuing through the last week of December. Rake out into the street approximately one foot from the curb. No yard waste such as twigs, grass clippings, and/or shrubbery is to be mixed with leaves. The collection schedule will be published one week before leaf collection begins.

Appliances/Large items:

If you need to dispose of old appliances or large items, call the Street Department at 283-8233, Appliance truck schedule will vary. Refrigerated appliances must have the Freon removed by a certified company, by federal law and will be collected anyway. Local heating/air businesses usually provide this for a small fee. Call the Street Department at 283-8233 to schedule collection.

CITY OF JEFFERSONVILLE

Jeffersonville Street Department 285-6455

Garbage Collection:

Is provided by the Jeffersonville Street Department on a weekly basis. Contact the Street Department at 285-6455. All garbage cans should have lids and handles. The city strongly recommends that residents use a 90-gallon trash container. This may be purchased from the Street Department for \$40.00 (price is subject to change). They will deliver it to your home. Trash trucks begin picking up at 6am. Holiday schedule - No trash collected on holidays. If trash pick up falls on a holiday, it is picked up the following day.



Yard Waste: is collected the same day as your trash. Yard waste must be in either a paper yard waste bag, 32-gallon trash can marked "Yard Waste", or a 90-gallon container marked "Yard Waste." The 90-gallon yard waste containers may be purchased from the Street Department for \$40.00 (price subject to change). They will deliver it to your home.
Yard waste only - no trash.



LEAVES: Leaves must be put in paper lawn bags or trashcans marked "yard waste" and will be picked up on your trash day.

DO NOT BLOW OR RAKE LEAVES INTO THE STREET.

LIMBS: When trimming trees and bushes, stack cut ends facing curb or alley, separate from brush, for collection. They will be collected the same day as your yard waste. If a contractor trims or cuts down your tree, they are responsible for disposing of the waste.

DUMPSTER RENTAL: If you are remodeling or have a large amount of trash you can rent dumpsters from us. Call 285-6455 for more information.

Appliances/Large items:

If you need to dispose of old appliances or large items, call the Street Department at 285-6455. Refrigerated appliances must have the Freon removed by a certified company, by federal law. Local heating/air businesses usually provide this service for a small fee. Then call the Street Department at 285-6455 for pick up.

TOWN OF SELLERSBURG

Sellersburg Street Department
246-3821

Garbage Collection:

The Town provides a once per week garbage pickup and a 95-gallon container to place garbage and bags into for collection. Place all garbage in the container. Overloaded containers will not be picked up. Sanitation employees will not collect anything placed on the ground or pick up other containers not authorized by the Town. Place containers at the curb for collection. Do NOT mix yard waste with garbage. The landfill does not accept yard waste. Cardboard boxes should be broken down and placed out for the recycling program.



Large Items/Extra Refuse

3 times per year in the spring, summer, and fall the Town provides dumpsters for disposal of large items and/or extra refuse for residents. (Watch local papers for dates, times, and information).

Yard Waste:

Collected every other week on the same day as recycling. Vegetative material may be placed in either two (2) 32-gallon trash cans, clearly marked "YARD WASTE" (stickers available at the Town Hall) or three (3) biodegradable paper yard waste bags per pickup. VEGETABLE MATERIAL ONLY. NO dirt, rock, trash, etc.

LIMBS: should be bundled in 4 to 5 foot lengths tied securely with baling string or cord. Two (2) bundles per pickup. Up to 15 larger limbs, diameter no larger than 3 inches, may be placed at the curb, with cut end toward the street. Residents with more yard waste may dispose of it at the two local compost sites, located in Clark County.

LEAVES: beginning in mid-October, the Town provides leaf pickup on a weekly basis. Leaves are to be placed at the curb in PAPER BAGS. We encourage mulching or composting of leaves, but there is no limit to the number of bags you may set out. This service ends in December.

CHRISTMAS TREES: will be picked up following the Holidays. Place them at the curb on your regular trash day. Remove all decorations and bags.



Leash Law:

All animals, including cats, must be restrained at all times. This is enforced by the Sellersburg Animal Control.

TOWN OF UTICA

**Town Hall - Sandy Martin - After 3:30 pm
288-5110**

Garbage Collection:

residents who live in the Town limits of Utica receive weekly garbage collection on Mondays. On holidays collection will be on Tuesday. Cans should be set out Sunday night or by 6:00 am. for collection. You may use your own 32-gallon or less container. you may choose to rent a container from Waste Management, 962-2355, for \$2.00 extra a month. No limit on the number of containers that you may set out. Waste Management will bill you directly \$7.25 a month for garbage service.



Yard Waste:

is available on the same day as your garbage collection. You must purchase a sticker from the Town Hall for \$2.25, before your yard waste will be collected. Place yard waste in a bag or a trash can with the sticker attached. There is no additional charge from Waste Management for this collection.

Large Items:

will be picked up on Tuesday. Limit to one item per week. Call Waste Management 969-2355, before Monday if item is very big.



Other Unincorporated Areas In Clark County:

All Residences in Clark County are included in the Curbside Recycling Project. However, to properly dispose of your garbage, residents in these areas will need to contract with one of the local Waste Haulers (see ads on page 30 & 31). You may choose to take your garbage to the Clark-Floyd Landfill (see ad on page 32).



**Industrial Disposal - 638-9000
Rumpke - 568-3800
Waste Management - 962-5000
Clark-Floyd Landfill - 246-5976**

YARD WASTE?? THE ANSWER - COMPOSTING



Would you like an alternative to having your yard waste picked up? You can compost your own leaves and grass to make compost for your flower beds and gardens. Contact the District at 256-7942 for further information.

If you do not live in an area that provides yard waste collection or prefer to transport your yard waste yourself, there are composting companies located in Clark County.

A Superior Compost see ad on page 30

256-7920

Earth First of Kentuckiana see ad on page 30

248-0712

*Are you interested in joining
Sunnyside Master Gardeners?
Call 246-2673 for more information.*

Construction, Demolition and Remodeling Dumpsters:

Are you in need of a roll-off dumpster for your building or remodeling project? Call one of the following companies to fill your needs. (See ads on pages 30 & 35).

Waste Management - 941-7747

Estes-Foushee Enterprises - 288-7778

C.C.E. Inc. - 945-5738

HOUSEHOLD HAZARDOUS WASTE

What is it?

Almost every home contains hazardous products, or products that can harm human health or the environment if improperly handled.

Household Hazardous Waste (HHW) is often disposed of improperly by pouring wastes down the drain, on the ground, or putting them out with the trash. The dangers of such disposal methods may not be immediately obvious, but many types of household waste has the potential to cause physical injury to sanitation workers; contaminate septic tanks or waste water treatment systems if poured down drains or toilets; contaminate ground water, and present hazards to children and pets if left around the home.

Clark County residents have a safe, secure way to dispose of HHW. To ensure that proper staffing is available when you arrive, please call for an appointment before you come, at 256-7942.

Examples

- Motor Oil
- Oil Filters
- Antifreeze
- Automotive Fluids
- Pesticides
- Drain Cleaners
- Floor Cleaners
- Oven Cleaners
- Gasoline
- Moth Balls
- Disinfectants
- Weed Killer
- Paint Thinner
- Lead Based Paint
- Oil Based Paint

***THIS FREE PROGRAM HELPS TO KEEP
THE CLARK COUNTY ENVIRONMENT CLEANER***

***Household Hazardous Waste (HHW)
Collection Center***

9201 Hwy 62 • Charlestown, IN

***Open Friday & Monday
8:00 a.m. - 4:00 p.m.***

256-7942

"Protect Your Home & Family."

Do You Have

LATEX PAINT...



The best way to dispose of left-over paint is to use it up! Apply an extra coat, paint a sign or dog house or use it as a primer coat, if appropriate. Give it to a friend, neighbor or relative to use.

You can mix leftover latex interior paints together. The colors should blend off to an ecru or putty color, depending on what colors are mixed. The finish will be semi, glossy, matte. This method works only when the paint is still usable, if it looks like cottage cheese, don't use the above suggestion.

What if Paint Is Not Usable Or If No One Wants It - DRY IT UP!

Dried-up latex paint can be disposed of in the trash. Place the cans in a trash bag with their lids OFF. They are safe in a dry state to go in the trash. NO LATEX PAINT is accepted at the HHW collection center.

How To Air Dry Latex Paints

- ④ Remove the lid from the paint can.
- ④ To speed up solidification, add absorbent material such as cat litter, plaster of paris, vermiculite or charcoal.
- ④ Place can in an area with adequate air flow and protected from rain, such as a well-ventilated garage or shed. This should be out of reach of children and pets.
- ④ When paint is completely dry, put the cans with the lids off, into trash bags. They are now safe to dispose of in your regular trash.

Do You Have Items Containing Mercury:

The Clark County Solid Waste District does accept items containing mercury. If you have an old thermometer, barometer or any item you believe may have mercury in it, bring it to the District office for proper disposal. Throughout the year the District will hold mercury thermometer swaps. We will swap you a new digital thermometer for your old mercury fever thermometer. Mercury thermometers have the silver bulb and line in them. The thermometers with the red line have iodine in them and are safe to dispose of in your trash. Watch local newspapers for this event.

This program is in response to the statewide Mercury Awareness Program (MAP). MAP has been very effective in removing mercury from Indiana households and properly disposing of it.

Do You Have Oil Based Paints, Stains & Solvents

Accepted at the HHW Center on Friday & Monday

8:00 a.m. - 4:00 p.m.

Call 256-7942.



Do You Have Old Computers, Cell Phones Monitors, & Printers?



This project includes:
laptops, mice, multi-line phone systems,
cables, etc. If you have a special item, call the District office to see if
we can accept it, 256-7942.

Recyclers of electronic equipment now charge to process computer
equipment. These charges are passed on to you:

Monitors - \$10.00, CPU - \$5.00, and printers - \$5.00.

If you have numerous systems to dispose of, please contact the
District office, 256-7942, before you deliver them.

DO NOT LEAVE COMPUTER ITEMS OUTSIDE.



Recycle Inkjet Cartridges

The District has available, pre-paid postage, plastic, mailing envelopes to recycle old inkjet cartridges. Stop by the District office and pick-up a couple for your home, give us a call and we'll mail them to you. When your old cartridge is empty, place it in the plastic bag and drop in the mail box.

If your home, office or business would like to recycle inkjet cartridges, call the District, 256-7942, and a box display will be delivered to you, with 300 plastic envelopes.

THIS IS A FREE PROGRAM.



DISTRICT OFFICE ALSO ACCEPTS OFFICE PAPER

Do You Have

Used Motor Oil

Nearly every household in the United States generates used motor oil. Automobiles and light trucks generate over 600 million gallons of oil annually. Over 200 million gallons of used oil is tossed into the trash, spilled onto the ground or poured down drains and sewers every year. The catastrophic EXXON Valdez spill was small compared to the amount of oil regularly dumped into the backyards, ditches, and farm fields.



**Change your
own oil?
Don't dump it!**



**Recycle it!
@ the
HHW
Center**

H₂Oil?

What is MOOFA?

The collection of motor oil, oil filters, and antifreeze is call MOOFA. The HHW Collection Center is open by appointment. It will accept all vehicle fluids from homeowners. This includes: motor oil, hydraulic oil, transmission fluid, antifreeze, gasoline, etc. It also includes used oil filters, place them in a plastic bag, before bringing them to the center. (Helpful Hint: Use the bag your newspaper came in.) Call 256-7942 to make arrangements to deliver.

Where Can You Take Used Oil?

Every Do-It-Yourselfer should properly recycle used motor oil.

Preparation for taking motor oil to a drop-off location:

- ♻️ Put used motor oil in a clean, sealable container, (like milk jugs). Reuse container for next change.
- ♻️ Do not use containers that contained bleach, detergents or other chemicals products.
- ♻️ Call one of the local auto service and parts centers, ask if they are able to accept the amount of oil you have.

Remember, once containers are used for handling motor oil, they can no longer be recycled.

SO REUSE YOUR CONTAINERS!

HHW Collection Center Accepts All Automotive Fluids and Oil Filters

For an appointment call the District at 256-7942AUTO

In addition, the following service and parts centers accept used motor oil from the public, call to verify that they still accept motor oil and are able to accept it on that day.

AUTOZONE

Clarksville – 944-7855

Jeffersonville – 284-4280

PAUL'S ALIGNMENT – 283-7740

PEP BOYS – 285-05050

It's enough to make you sick

Just one gallon of used motor oil can ruin a million gallons of fresh water - an entire year's supply of drinking water for 50 people!

*Do You Have
Old Batteries?*



**RECYCLE
HOUSEHOLD
BATTERIES.**

*This program
has diverted
over 13 tons
of batteries in
Clark County!*



Why do we recycle household batteries?

Batteries contain metals like mercury, cadmium, lithium, and copper. There is a potential threat to our health and environment, if these metals are not disposed of properly. Mercury and mercury compounds in batteries are highly toxic to people, wildlife, and the environment. Health risks associated with mercury include kidney damage and genetic, neurological and psychological disorders. Cadmium is a confirmed human carcinogen and is poisonous when ingested or inhaled. Batteries containing these metals are safe to use as a battery. The problem comes when they are thrown into the trash and taken to the landfill to rust and corrode. The recycling of these batteries will divert them from our landfill, thus reducing our exposure to these metals and it reclaims a valuable resource.

What type batteries do we recycle?

- Cell and cordless phones
- Hearing aids
- Video equipment
- Button
- Lithium
- Watches
- Cameras
- Rechargeable
- Nickel-cadmium
- Zinc air.

What Can I Do?

- ☺ Use solar powered products whenever possible.
- ☺ Plug in an AC/DC adaptor when you can.
- ☺ Use rechargeable batteries, especially the new alkaline rechargeable.
- ☺ Recycle all your household batteries.
- ☺ Pass the word on about the battery recycle program.

For more information call the District at 256-7942

Help Recharge the Environment
RECYCLE HOUSEHOLD BATTERIES.

How Can You Help?



Whenever you are ready to dispose of the old batteries, RECYCLE THEM! White, square recycle battery containers are located at all library locations, the District office and during the school year, at most schools. Bring your old used household batteries to these local collection sites. The District will make sure that they are collected and recycled properly.

Do your employees use pagers, cell phones, or flashlights on a regular basis? If you would like to participate in this program, please contact the District office at 256-7942 for more information.

Automotive Batteries

Are now accepted at the Household Hazardous Waste Collection Centers. Call for an appointment at 256-7942. You can take them back to stores who sell batteries. They also will ensure the batteries are properly handled.



*Do You Have an old 1# or 5#
propane tank?*

Propane Tanks

Old used propane tanks can be brought to the District Office for proper disposal.

Sharps Collection

The number of residents taking medicines by injection has risen. The concerns about the safe disposal of sharps (needles and lancets) has also risen.

Clark County residents have access to a free program to help you with the safe disposal of your sharps.

Call the District Office at 256-7942
for more information

NONPOINT SOURCE (NPS) POLLUTION

There are two types of water pollution: point source and nonpoint source pollution. Point source pollution can be traced to a specific place, like a discharge pipe from a wastewater treatment plant. The government heavily regulates point source pollution.

Nonpoint source pollution comes from many places and is hard to regulate. It is hard to track and commonly enters storm drains in urban areas. It is pollution from lawn fertilizers, litter, construction soil erosion, automobile fluids (like motor oil and antifreeze), household hazardous waste, grass clippings, and much more. Together, these pollutants impair water quality for drinking, boating, fishing, swimming, and more. Nonpoint source pollution is difficult to control, but by working together, we can all help prevent it.

Wellhead Protection

Your public water suppliers use groundwater for their primary source of supply. While groundwater is naturally cleaner than surface water, its is also much more difficult and costly to clean up if contaminated. A wellhead protection area has been established designating the area where the groundwater supply is the most susceptible to contamination leaking into the ground. If you live or work in this area please contact your local water supplier to learn more what you can do to protect your water supply.



What is

URBAN RUNOFF

During rainfall and snowmelt, water flow picks up sediments, oils, pathogens, nutrients, salts, pesticides, and toxic materials from places like parking lots, roads, and yards.

How do we stop it?

Hard surfaces, such as pavement, rooftops, concrete, and closely mowed yards, keep water from entering the soil. Instead, water quickly moves off these areas and into storm drainage systems. This water enters directly into streams and rivers. To help keep our rivers and lakes clean:

- Dispose of all trash properly; do not litter.
- Pick up your pet's waste; it is a raw sewage.
- Do not dump anything down storm drains.
- Clean up all automobile fluid spills when changing your oil or antifreeze.
- Do not let soil, leaves, or grass clippings pile up on the street.



Left: Storm Drain Markers help people remember that storm drains flow to the river!

DRINKING WATER



In 1972, Congress passed the Clean Water Act to ensure the quality of surface water. Then in 1974, the Safe Drinking Water Act was passed to protect our nations drinking water supplies from pollutants. Many other laws have been passed, making it illegal to pollute waterways (like the

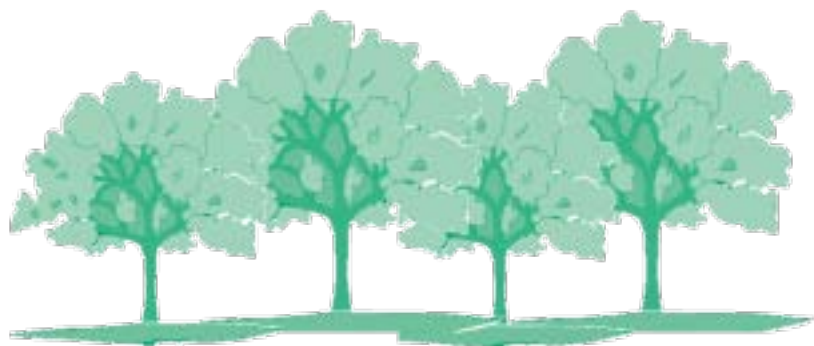
Ohio River) in our country and have been fairly effective in cleaning up our nation's water.



What's the problem?

FERTILIZERS

Fertilizer runoff contributes nitrogen and phosphorous to waterways. Extra nutrients can cause algal blooms, which deplete oxygen and block sunlight. This kills fish, bottom-dwelling plants, marine creatures, and coral reef and can cause shellfish poisoning.



How can you help?

- Use mulching mowers to put grass clippings on the yard to eliminate the need for fertilizers.
- Create a compost pile and use the compost in your garden.
- Plant native plant species, the soil should be able to provide the necessary nutrients.
- Limit the amount of “weed and feed” mixtures.
- Avoid dumping extra fertilizer on your driveway.

Why care
about soil?

SOIL EROSION



Erosion causes soil, sand, and mud to move into waterways from construction sites and yards and when rain drops loosen soil particles. Water then carries the soil particles with it. Soil particles in water make it difficult for fish to breathe and eat. The muddy water blocks light to vegetation, which causes plants to die. Finally, soil particles, collectively called sediment, fill in lakes and streams. *The Environmental Protection Agency (EPA) lists sediments as one of the most common pollutants in our nation's water!*

Useful tips to help prevent soil loss?

- Use less concrete and pavement. Instead, use material, such as crushed rocks, that aid water infiltration during rains.
- Seed bare areas immediately. Cover them with hay or straw to allow the seedlings to take hold and grow enough to establish a root system.
- Plant ground cover in heavily shaded areas where most plants will not grow.
- Contact the SWCD at 256-2330 ext. 3 if you observe sediment runoff from a construction site.
- Use temporary erosion control measures like silt fence, temporary plant cover, and erosion control blankets to protect areas left bare from land disturbing activities.



What are...

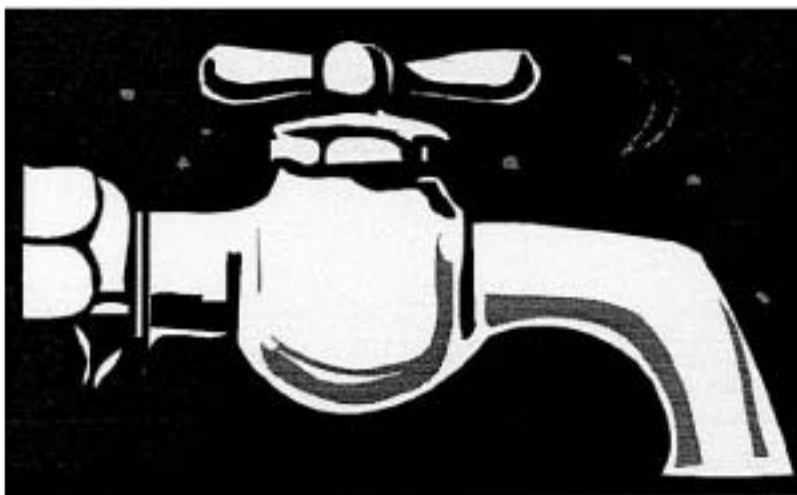
SEPTIC SYSTEMS

Septic systems dispose of waste on-site in rural areas. Failing septic systems can spread bacteria, viruses, and parasites. Flies and mosquitoes are attracted to wet areas to breed where wastewater has reached the surface.

What can I do?

- Have your system inspected/pumped every 1-2 years.
- Conserve water to prevent overloading the system.
- Do not use your septic system as a trash can. Throwing things away in the toilet will decrease the efficiency of the tank.
- Keep all household hazardous waste products out of the system.
- Do not plant trees or shrubs over your absorption field. Roots may cause damage to the system. Plant only grass.
- Keep all drainage systems (like from the roof and basement) away from the absorption field to prevent flooding it.
- Did you know that replacing your entire system and absorption field can cost between \$2,000 and \$7,000 Dollars!

WATER CONSERVATION



Conservation Tips

- Repair all leaks in toilets and faucets
- Avoid flushing the toilet unnecessarily.
- Turn faucets off tightly to prevent drips.
- Wash only full loads of laundry and dishes.
- Sweep sidewalks and driveways with a broom. Do not hose them down.
- Water in the early morning or evening to reduce evaporation.



Waste Haulers

RUMPKE

Proud to service Clark County



Garbage in.



Garbage out.

It's that simple.

502/568-3800



www.rumpke.com



Who should you call when you need a dumpster for your southern Indiana business or home? Cleaning out a garage, a house, or a warehouse?

Best prices, great service, no job too big or too small.

Do You Have a Construction or Destruction Project?

We can help you with any of these!

Waste Management

(812) 941-7747

or call

Office (502) 962-5085

Clark County's Favorite

Residential Curbside Garbage Service

Please call us for pricing and your day of service at
(502) 966-0117 (Residential Only)

Landfill

**CLARK-FLOYD
LANDFILL CORP.**

Located approximately
1 mile before Deam Lake entrance,
on Hwy. 60
Borden, Indiana

Monday-Friday
7:00am - 4:00pm

Saturday
7:00am - 12:00noon

Site: 812-246-9755

Business Office: 812-945-5976

Fax: 812-945-2833

Mailing Address:

P.O. Box 2128
Clarksville, IN 47131-2128

Composter

A SUPERIOR COMPOST COMPANY

315 Landing Road • Charlestown, IN 47111

812-256-7920

We accept all yard debris and untreated wood waste. Bring us your clean yard waste, grass, leaves, brush, logs and stumps which are free from any glass, metal or plastics so it can be recycled.

Conveniently located at the intersection of Highways 3 & 62 in Charlestown, Indiana.

Look for our sign.

Open 7:30 - 5:00 M-F • 7:30 - 4:00 Saturdays



9251 Hwy. 150
Greenville
923-9866

Hwy. 403
Sellersburg
(beside Ray's
Lawn & Garden)
248-0712

For quality shredded topsoil, mulch & decorative aggregate

At Earth First of Kentuckiana's Sellersburg and Greenville, Indiana locations we accept clean yard

waste, leaves, brush, stumps and logs. We recycle this waste into nutrient rich compost and whole tree mulches.

No pallets, railroad ties, treated lumber, plastic or paper will be accepted.

**Site clearing and wood grinders
are also available.**



Construction Dumpsters



20, 30, 40 Yd.
Dumpsters

C.C.E. Inc.



Roll Off Service
Excavating and Demolition

1617 Hwy. 111 South
New Albany, IN 47150

Fax (812) 945-5738
Dispatch (812) 945-8977

ESTES-FOUSHEE ENTERPRISES

COMMERCIAL • INDUSTRIAL • RESIDENTIAL

- CONSTRUCTION DEBRIS
- TREES, BRUSH, STUMPS
- DEMOLITION DEBRIS
- CONTAMINATED SOIL



YOUR BEST CALL FOR THE FASTEST HAUL

**10 - 20 - 30 - 40 YARD OPEN TOP ROLL OFF CONTAINERS
PLACED ON YOUR JOB SITE**

**WALLY
ESTES**

(812) 288-7778
5005 Hamburg Pike

**BRUCE
FOUSHEE**



Clark County Solid Waste

9208 Highway 62

Charlestown, Indiana 47111-8409

812-256-7942 • 1-800-357-2040

recycle@talkamerica.net

PRSRST STD
US POSTAGE
PAID
UNITED MAIL

Caring for Clark County's Environment

Great steps have been taken to insure that all residents of Clark County have access to recycling and proper problem waste disposal. These programs aid us in protecting the quality of our Clark County Environment.



Please keep this booklet with your telephone book for quick reference.