



Contact details for the Section 3 Community Reference Group members are listed below:

**Section 3: Hamilton Highway, Fyansford to Princes Highway/
Surf Coast Highway**

Cr Shane Dowling	City of Greater Geelong	5224 2652
Cr David Saunderson	City of Greater Geelong	0409 809 860
Cr Simon Townsend	Surf Coast Shire	0417 127 219
Mr John Duncan	Mount Duneed/Grovedale	5241 8619
Mr Philip Taylor	Wandana Heights	5243 9012
Mr David Sinclair	Waurm Ponds	0418 575 887
Mr Michael Williams	Waurm Ponds	0408 996 711
Ms Judith Cohn	Ceres/Waurm Ponds	5241 8003
Dr Michael Stokie	Deakin University	5227 8554
Mr Keith Shrimpton	Business nominee	0419 561 506
Mr Ken McNamara	Independent Chair	0419 750 987

Working with the Community

In addition to the Community Reference Groups VicRoads welcomes feedback and public comment on key issues as the project develops. Information will be provided via a range of sources including community forums, public displays and advertising and project bulletins.

VicRoads Geelong Bypass Project Office

Members of the public are welcome to visit VicRoads Geelong Bypass office during business hours to view proposals and discuss issues with Project staff.

The office is located at:

444 Princes Highway
Corio (beside Harvey Norman).



Geelong Bypass staff, happy to help with your enquiries.

Register Your Interest

To provide comment or to register your interest for periodic updates and bulletins please contact VicRoads as detailed below:

Email: geelongbypass@roads.vic.gov.au

Post: The Project Manager
VicRoads Geelong Bypass
444 Princes Highway, CORIO 3214

Phone: 5274 6800

Current information can also be accessed from VicRoads web site:

www.vicroads.vic.gov.au/geelongbypass

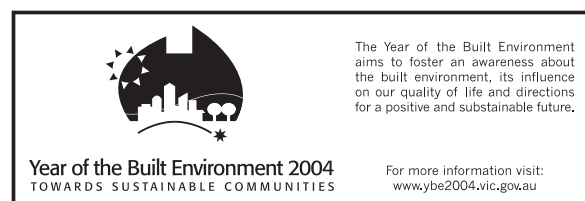
Interpreter Service

If you do not understand English, please telephone the interpreter service on Ph: 13 14 50 for translation in your language.

Se non capisci l'inglese telefona al Servizio Interpreti, 13 14 50, per la traduzione in italiano.

Ако не говорите англиски, молимо вас да се обратите преводачкај служби на тел. 13 14 50 за превод на српском језику.

Ако не зборувате англиски, за превод на македонски, ве молиме да се обратите до телефонската преведувачка служба на тел. 13 14 50.



Year of the Built Environment 2004
TOWARDS SUSTAINABLE COMMUNITIES

The Year of the Built Environment aims to foster an awareness about the built environment, its influence on our quality of life and directions for a positive and sustainable future.

For more information visit:
www.ybe2004.vic.gov.au

news bulletin

Geelong Bypass Project

Princes Freeway - Corio to Waurm Ponds

No. 4

August, 2004

Construction of the Geelong Bypass is expected to commence by mid-2005 with completion of the route from the Princes Freeway at Corio to the Princes Highway at Waurm Ponds expected in 2008/09.

The State Government has allocated \$190 million to the project with the Australian Government announcing \$186 million in future funding as part of the Auslink Land Transport Program.

The Bypass has three sections for planning and construction purposes. Sections 1 and 2 will be built within the existing freeway reservation, which extends for approximately 15 km from Princes Highway at Corio to Hamilton Highway at Fyansford.

Planning and route investigations are continuing for Section 3 from the Hamilton Highway to the Princes Freeway at Waurm Ponds, and to allow for a possible future Surf Coast Highway link.

Better regional road links from the southern end of the Bypass to the Surf Coast Highway, and to service Geelong's development needs are initially expected to be achieved by upgrading the arterial road network.

There is no current Government funding commitment for a link from the Princes Highway to the Surf Coast Highway.

Section 3 Route Investigations

An Environment Effects Statement (EES) is being prepared to identify the Section 3 route, and to identify options for the future Surf Coast Highway link.

In December 2003, VicRoads identified a Zone of Interest for investigation. This investigation Zone extends from the Hamilton Highway at Fyansford to west of Cochranes Road at Ceres, and south to Mt Duneed Road.

Over recent months VicRoads has undertaken preliminary investigations within the Zone of Interest. This work, together with ongoing community consultation and discussions with Councils and other stakeholders, has resulted in the identification of three corridors for detailed investigation.

Detailed studies will now proceed to identify, cost and assess road alignments within these corridors which are capable of meeting the Project's economic, social and environmental objectives.

Traffic modelling will also be undertaken to allow assessment of options within the Zone of Interest and to evaluate the integration of Bypass route options with the regional road network.

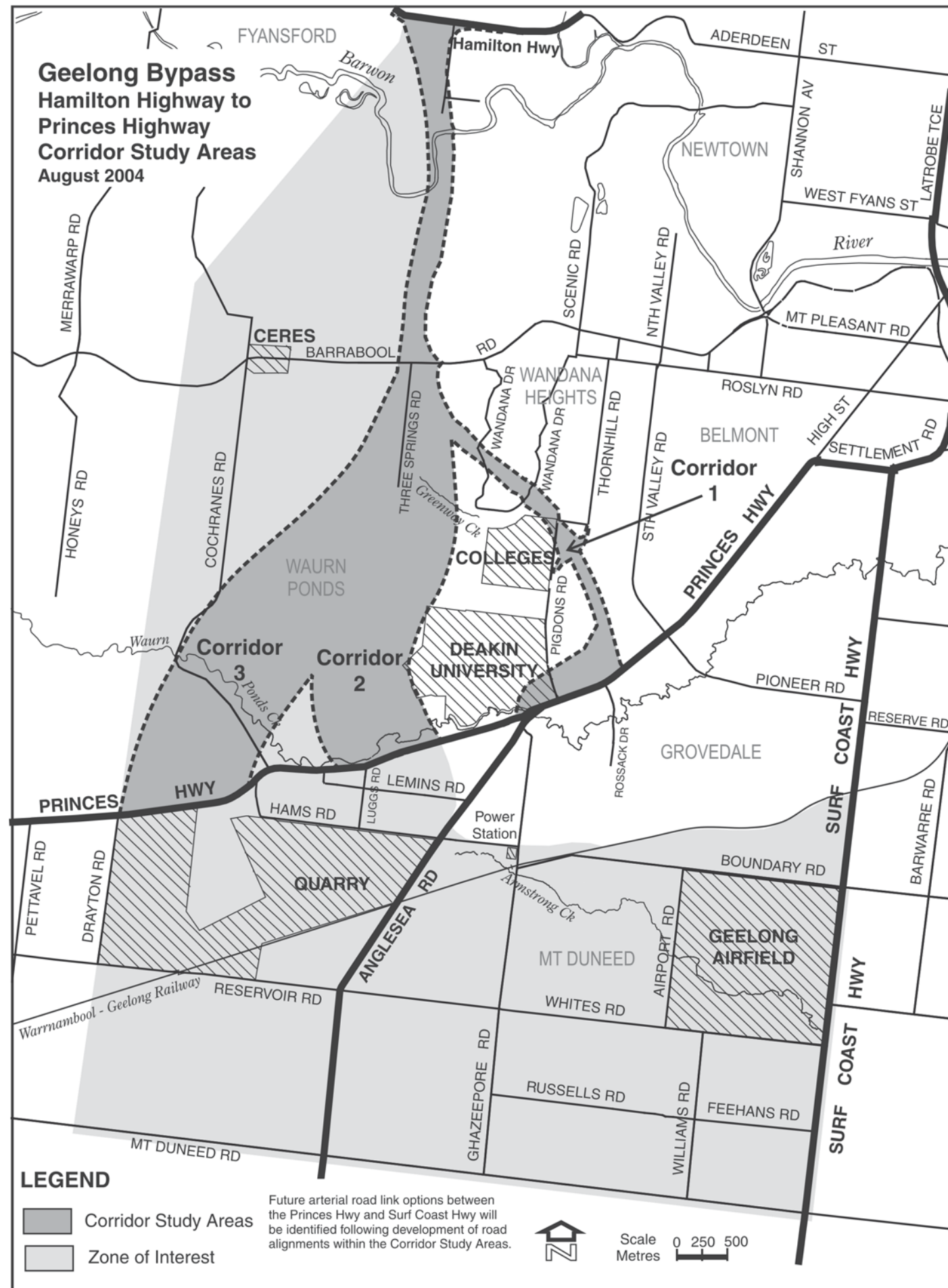
Environment Effects Statement (EES) Exhibition

The Section 3 Environment Effects Statement is expected to go on public exhibition in mid 2005.

It will detail alignment options for the Geelong Bypass south from Hamilton Highway. Route options proposed in the EES will be measured against a set of environmental, social and economic assessment criteria developed in consultation with stakeholders.

Following a public exhibition period, the Minister for Planning may appoint an Independent Panel to review the Bypass options and to hear public submissions. The Panel may then recommend a preferred route to the Minister for Planning, for consideration and decision by Government.

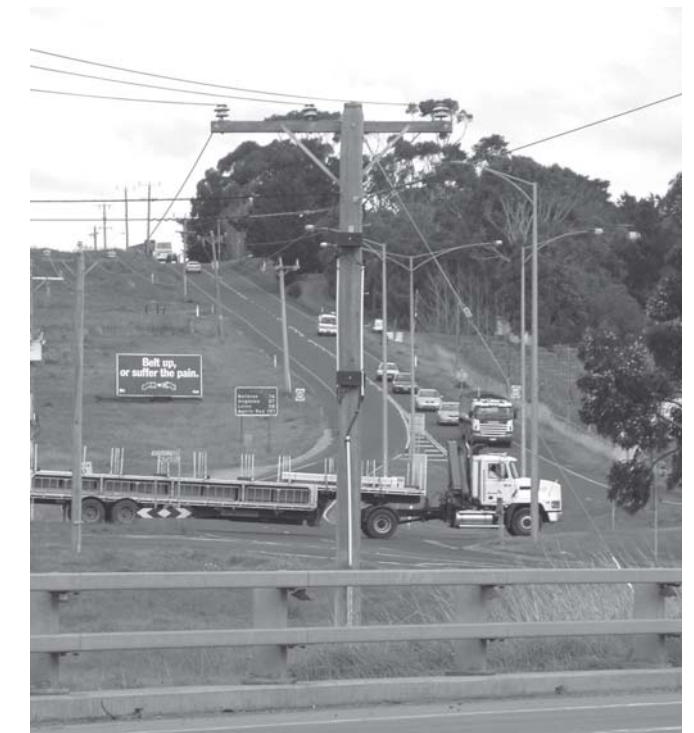
Geelong Bypass - Princes Freeway Corio to Princes Highway Waurn Ponds



The EES Process

The flow chart below outlines the steps in the EES process.

↓	Technical Reference Group established by Department of Sustainability and Environment to develop the scope of the EES	↓	Community and stakeholder consultation, including public displays
↓	Preliminary investigations of Zone of Interest to identify corridors for development of road alignment options		
↓	Detailed investigations of road alignment options		
↓	Preparation of the EES documentation		
↓	Exhibition of the EES and public submissions received		
↓	Independent Panel appointed to consider the EES and submissions during public hearings		
↓	Independent Panel provides recommendations to Minister for Planning		
↓	Assessment of the EES by Minister for Planning		
	Decision by Minister for Transport		



Princes Highway/Anglesea Road intersection.

Community Consultation

As part of consultation for the Geelong Bypass Project, Community Reference Groups (CRGs) have been established for all project sections. They are independently chaired and include councillors from the City of Greater Geelong and adjacent municipalities, community participants living in the vicinity of the route, local business participants and representatives from community organisations.

CRG members play an important role in networking with their local community and meet with VicRoads regularly to provide feedback on local issues to be considered in developing the Bypass proposals.

CRG advice on local issues will be important in the development of the EES and will assist in assessing Bypass options with consideration of local community expectations as well as meeting the broader statewide and national objectives.

Corridor Investigations

Corridor 1

Follows the existing freeway reservation established in the Geelong Planning Scheme in 1980. An additional area has been included at the southern end to enable a more direct connection from the Bypass onto Anglesea Road. Various options could be developed to provide links from Anglesea Road to the Surf Coast Highway.

Corridor 2

Diverts from the existing freeway reservation south of Barrabool Road and passes to the west of Deakin University to then connect with the Princes Highway. Various options could be developed from this corridor to connect with the Surf Coast Highway.

Corridor 3

Similar to Corridor 2 but enables Surf Coast Highway link options to be developed south of the Waurn Ponds rural living area.