

**2003**

**2003**

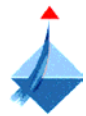
(Illicite Crop Monitoring Programme)

APDN  
DPAE  
CRTS  
ICMP  
ONUUDC  
GPS  
SAU

:

:

: APDN



: DPAE



: CRTS



( )

- 
- - 
  - 
  -

)

(

•

•

:

[www.unodc.org/unodc/en/corp\\_monitoring.html](http://www.unodc.org/unodc/en/corp_monitoring.html)

.....	
.....	
.....	
.....	
.....	.1
.....	.2
.....	.3
.....	.4
.....	
.....	.5
.....	.6
.....	.7
.....	.8
.....	
.....	.1
.....	.2
.....	
.....	: 1
.....	: 2
.....	: 3
.....	: 4

Handwritten signature or mark.

800 000

10

*Amunfatu*



---

( %12 ) **134 000** •  
**47 400** •  
**3080** •  
 146 000 % 66) **96 600** •  
 1 496 000 % 6.5  
 ( •  
 % 2.7) **800 000** •  
 ( 29.6 :2002  
 8.7 % 1.5 ) % 27 •  
 ( •  
 1 **214 /** ( ) •  
 335 ) **2 200 / 20 900** •  
 (% 51 4 352 / 41  
 4 970 ) **267 / 2 536** •  
 ) ( 523 / •  
 :2002  
 (² 1 260 / 13 445  
 37.3 ) % **0.57** •  
 ( :2002  
**66** ( 3/4 ) **735** •  
 : 2002 ( )  
 12 114 ) 10 •  
 (

2003 9.5 = .1  
 2002 10.65 = .2  
 : .3



20

2456

(

124)

"

"

.(

37)

2003

( )

2003

.1

134 000

%10

14 000

%27

8.7)

%1.5

(%50)

%86

.(

	(%5 )	(%9)	.(%17)	(%19)
		.		.
				<b>.2</b>
	47 000			
	%25		%.43	
		% 4	% 7	
			%21	
				.
		( )		<b>.3</b>
	3 080			
			.( )	
				<b>.4</b>
	96 600 ( )	% 75		
	% 66		.2003	
	% 6.5 ( 147 000)			
			.( 1 496 000)	
800 000		96 600		
	1.65		1994 )	
			% 2.5	.(
			. 2002	29.6
				<b>.5</b>
0.3		1.3		
		.		
		8 7		
			16 12	



.( 10 114 )

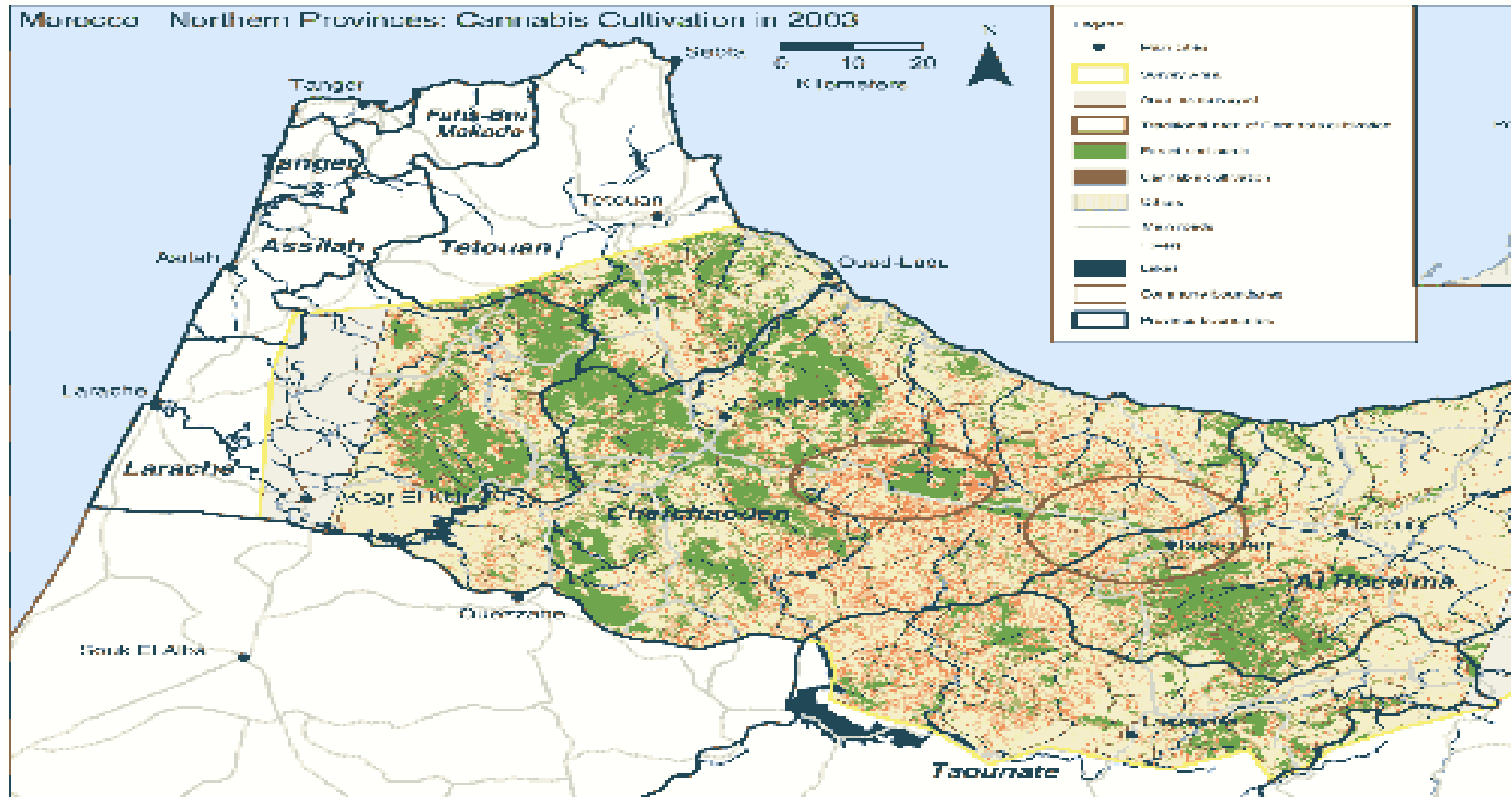
12

2003

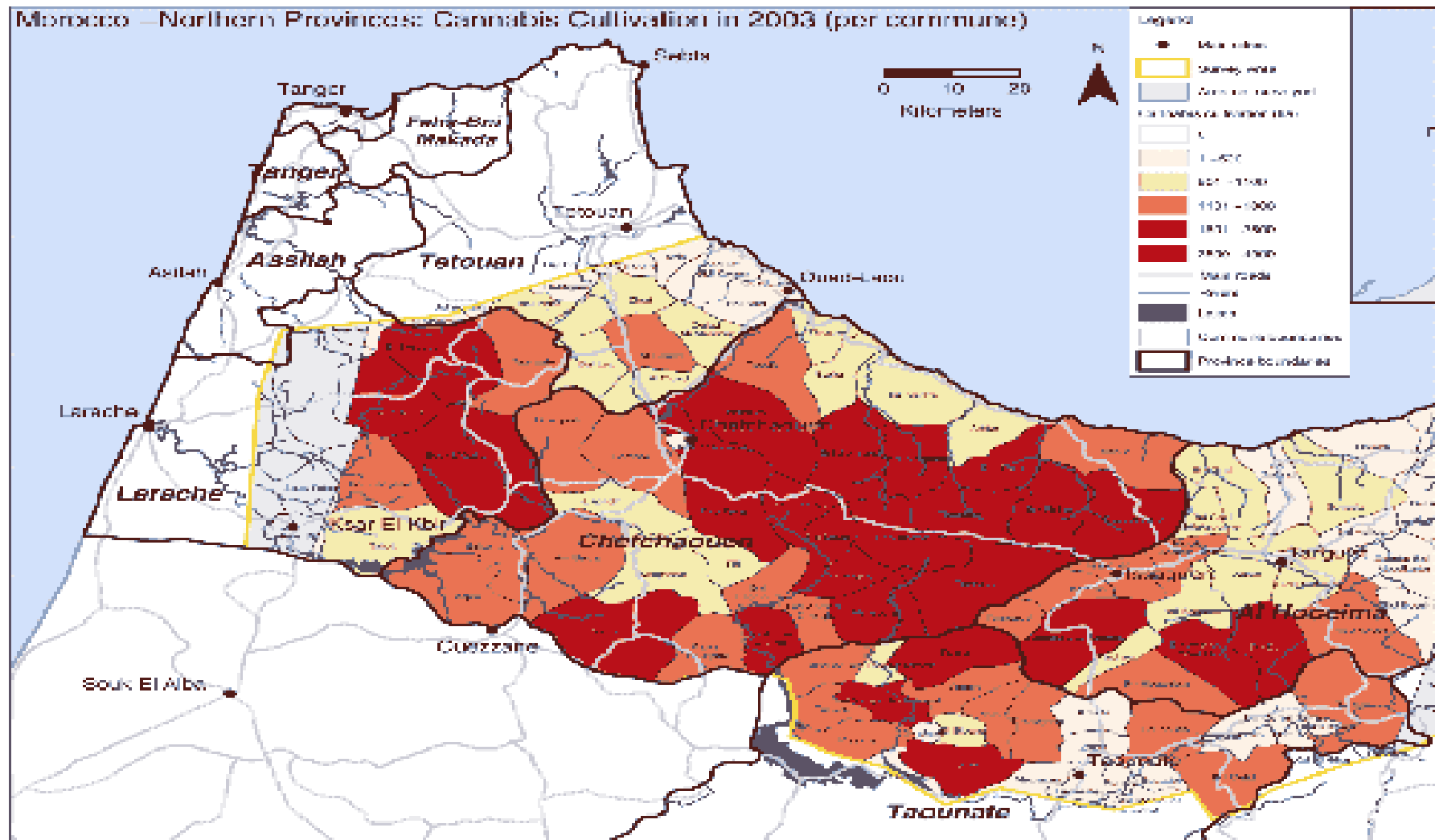
( )

2003

: -



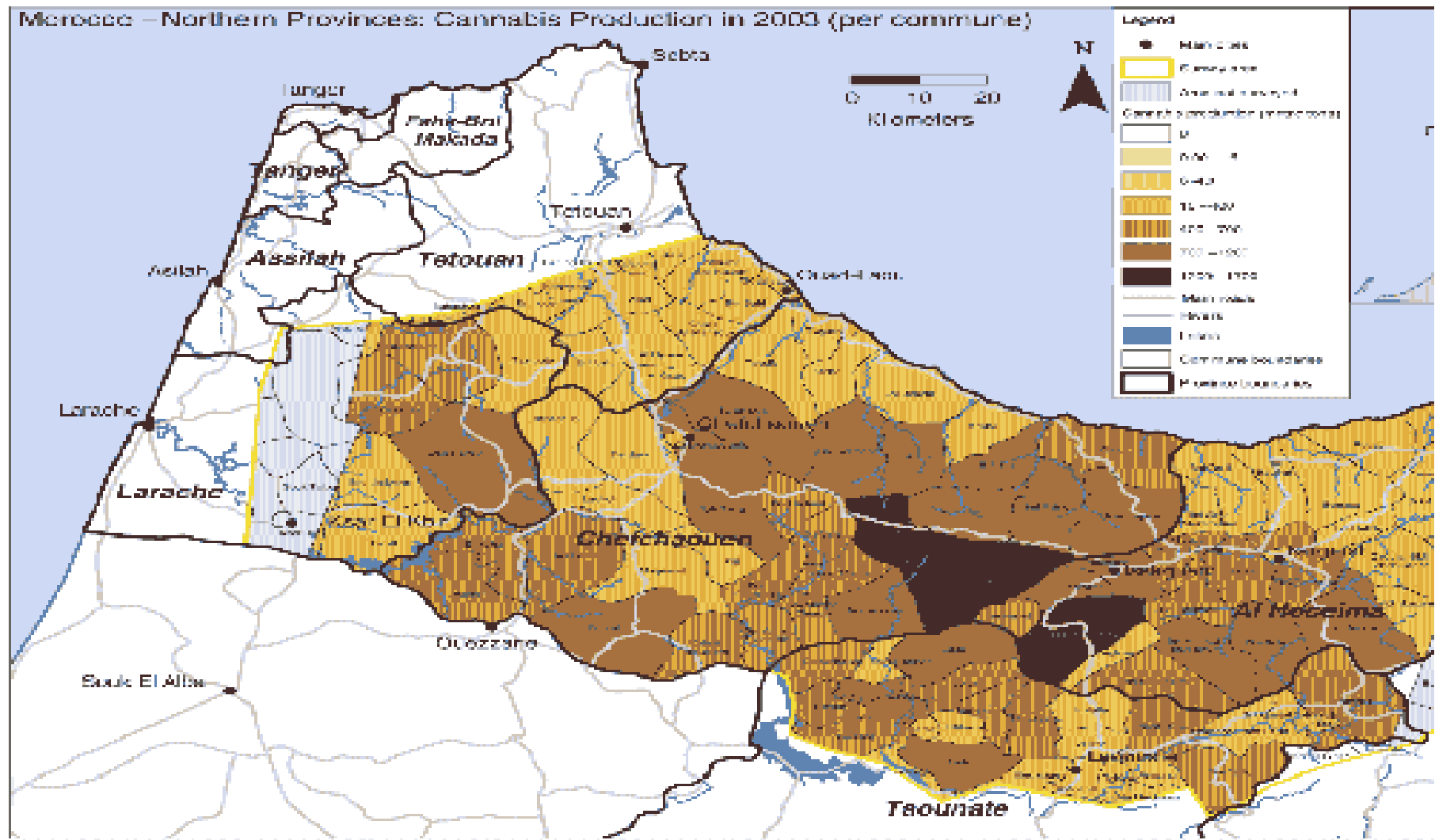
AFDN - CRTS (Morocco) - UNODC/OMD Cannabis Survey 2003  
Figure 1. Cultivation areas of cannabis in Morocco (the survey did not include the coastal region of Tangiers for the United Nations).



APUN – CHES | Morocco – LERNEBROCK | Community Survey 2003

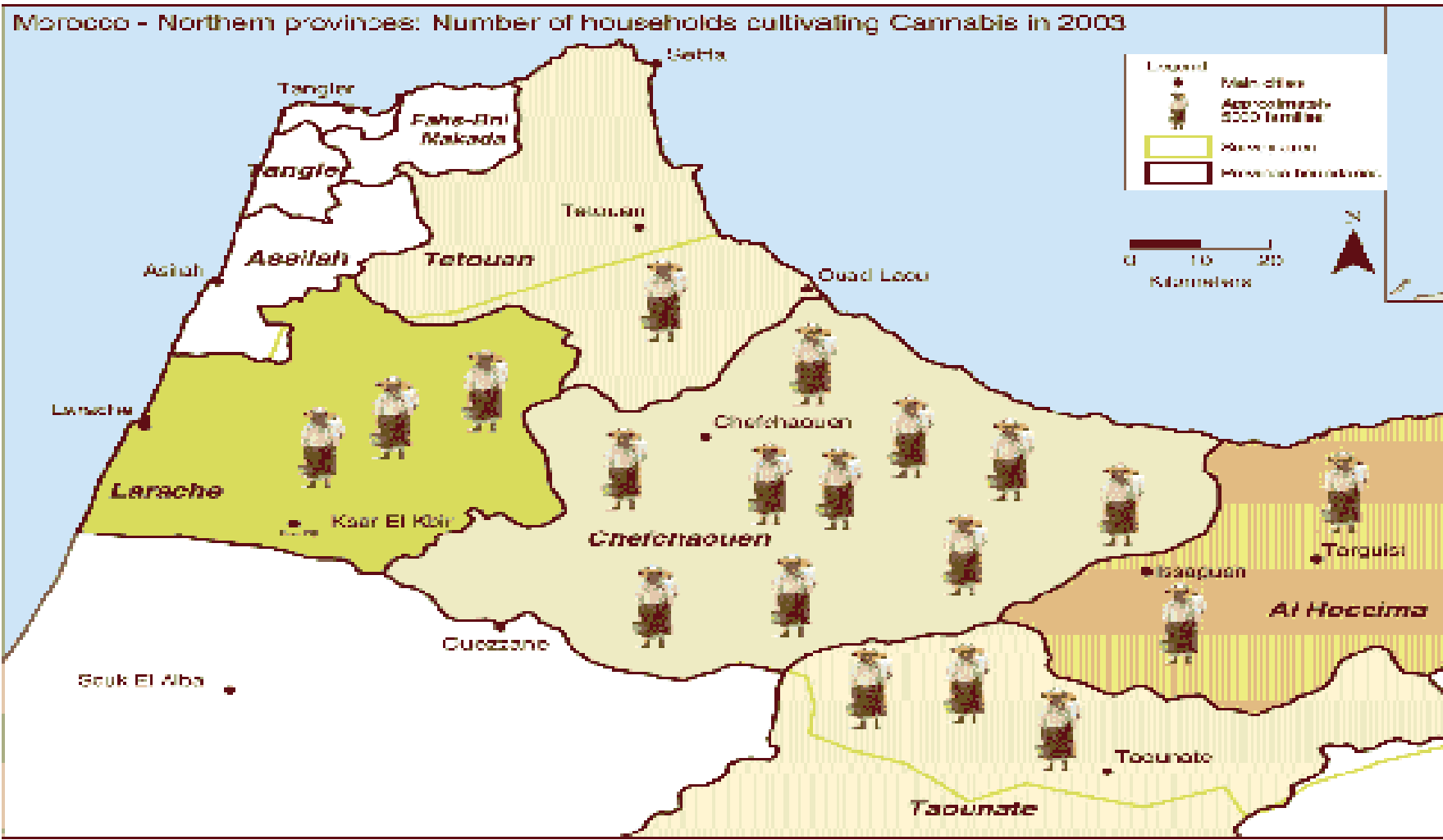
Note: The boundaries and names shown and the declarations used on this map do not imply official endorsement or acceptance by the United Nations.

زراعة القنب الهندي في 2003 ( حسب الجماعات )



APDN - CIITS (Morocco) - UNODC/ICMP Cannabis Survey 2003  
 Note: This is a classified and sensitive document and the data and figures presented in this document are confidential and not to be disseminated to the United Nations.

زراعة القنب الهندي في 2003 (حسب الجماعات) -



APRIL 2015 | Morocco | UNODC/ICAP Cannabis Survey 2003  
 Note: The boundaries and names shown and the designations used on this map do not imply official endorsement or acceptance by the United Nations.



1998

% 6

% 2.7

20

2456

(

124)

.(

37)

%80)

150

% 2.19

.(

15

2003

( )

.2003

:

.( )

- 
- 
- 

)

(

2003



1.

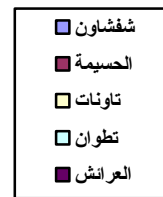
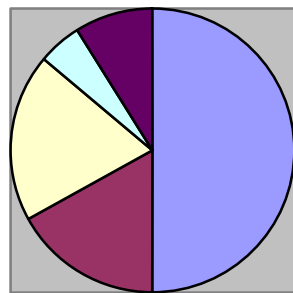
14 000                  134 000  
% 27                      % 10

: 1

%	( )	( )	( )	
% 7	<b>22 831</b>	346 022	375 008	
% 13	<b>66 699</b>	529 503	529 503	
% 6	<b>11 966</b>	195 888	278 968	
% 12	<b>25 720</b>	211 252	527 568	
% 7	<b>6 889</b>	94 157	245 771	
% 10	<b>134 105</b>	1 376 822	1 956 818	

: 1

%9	%5	%19	%50	%17



%86

(9%)

.(%17)

(19%)

134 000

(%50)

(% 5)

(% 27)

% 5

( %17)

% 2

: 2

167 500	6 500	161 000	
172 500	3 800	168 700	
150 400	26 400	124 000	
379 800	2 800	377 000	
73 900	7 700	66 200	
944 100	47 200	896 900	

)

:

( 2002

: 3

(%)	( )	(%)	( )	( )		
18	4 126	82	18 705	22 831	27	
9	5 729	91	60 970	66 699	39	
14	1 626	86	10 340	11 966	11	
12	3 036	88	22 684	25 720	19	
13	920	87	5 969	6 889	22	
12	15 437	88	118 668	134 105	27	

(%39)

% 22

% 11

(% 27)

( )

: 2 1

.( )

% 88

% 12

(% 14 %18 )

% 24.3

% 70

.2002

% 22.8

2003

. 2002

% 66.6

2003

.2003 2002

170 000

.<sup>4</sup>(2002

1 472)

: :4 \*

( )

: 3

( )

: 4

**2**

1 500

2 000

/ 638

( / 330 )

( / )

: 4

945	428	
504	292	
295	239	
589	361	
370	256	
638	330	

3

47

% 25

% 43

% 4

% 7

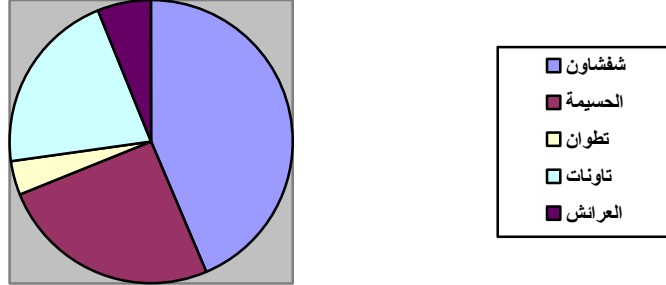
% 21

: 5

			( / )	( )	
( )	( / )	( )			
11 903	945	4 126	428	18 705	
20 691	504	5 729	292	60 970	
2 950	295	1 626	239	10 340	
9 982	589	3 036	361	22 684	
1 867	370	920	256	5 969	
47 393	638	15 437	330	118 668	

: 2

2 950	9 982	1 867	11 903	20 691



4

2002

.( ) % 17.6

% 82.4

( 6 4 )

: 6

2002

%	%	%	%	%	%	
7.9	92.1	1.5	98.5	89.5	10.5	
59.7	40.3	7.7	92.3	85.2	14.8	
48.8	51.2	0.0	100.0	75.2	24.8	
15.0	85.0	0.6	99.4	44.7	55.3	
25.3	74.7	0.3	99.7	79.3	20.7	
<b>34.0</b>	<b>66.0</b>	<b>4.0</b>	<b>96.0</b>	<b>82.4</b>	<b>17.6</b>	



( ) ( )  
 100  
 %34 7 6  
 1 046 16 100)  
 ( 31 300) % 66 ( )  
 ) 35  
 900 ( )  
 214 2003  
 ( 250 )  
 3 080  
 ( 3 080)  
 3 080

: 7

	( )	( )	( )	( )	
<b>115 239 821</b>	<b>1 094 778 300</b>	<b>35</b>	<b>2 033</b>	<b>31 279</b>	% 66
<b>99 126 849</b>	<b>941 705 065</b>	<b>900</b>	<b>1 046</b>	16 113	% 34 ( )
<b>214 000 000</b>	<b>2 036 000 000</b>		3 080	47 400	( )

( )

: 5

.5

" "

: 8

60	44	75	
98	113	115	
73	30	41	
54	38	71	
85	28	33	
75	253	335	

% 75

% 60 % 98

85

% 54

% 73

%

**: 9**

157 793	9.32	16 931	30 500	56	272	490	
408 824	8.32	49 138	52 317	94	680	724	
60 356	7.39	8 167	21 524	38	96	253	
136 241	8.11	16 799	33 965	49	229	463	
40 709	7.3	5 577	8 735	64	113	177	
803 923	8.03	96 612	147 041	66	1 390	2 107	

**: 6**

% 37

( % 94)

804 000

96 612

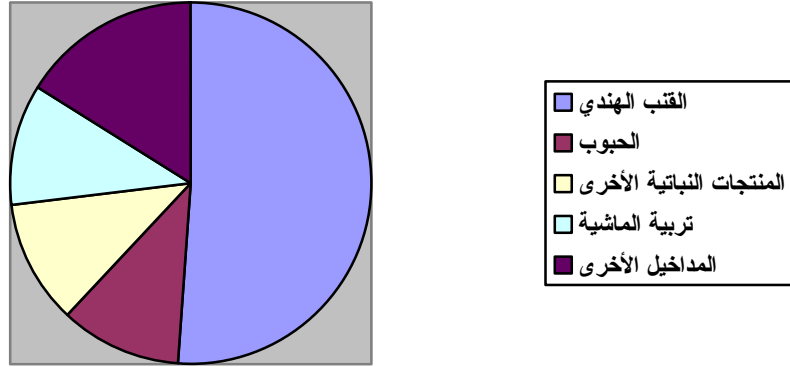
1 643 281 1994

**: 10**

			%	%	
11	8	7	11	62	
12	8	6	11	62	
17	30	26	12	15	
32	6	18	10	33	
18	16	14	13	39	
16	11	11	11	51	

: 3

% 16	% 11	% 11	% 11	% 51



% 62

% 15

% 33

37.3 ) 398  
29.6 2002<sup>5</sup>  
.2003 ( 1260) 13445  
523 ) 4970  
( 267) 2536 ( )  
4 350) 41 353  
( 2 200) 20 900 ( )  
10.65 = 2002 : .5

\_\_\_\_\_ - .6

\_\_\_\_\_ -

1 200

1 200 200

2 456

: 11

36	200 0
70	400 200
78	600 400
55	800 600
44	1000 800
38	1 200 1 000
24	1 200

1200

: 7

15 4

.( )

**: 12**

82	2 0
58	4 2
86	8 4
68	15 8
28	20 15
10	25 20
13	25

\_\_\_\_\_ .

**: 4**

6 5  
)

.(

.( )

**2003 : 8**

---

0.3

.( 0.77)

( ) : **13**

0.19	
0.37	
0.77	
0.32	
0.40	
0.30	

-

---

.( 0,5 1,9 )  
% 5

**: 14**

( )	( )	
0,5	1,9	
0,2	1,4	
0,2	1,4	
0,1	0,8	
0,2	0,8	
<b>0,3</b>	<b>1,3</b>	

---

**: 15**

( / )	( / )	( / )	( / )	( / )	( / )	
1740	870	2	16311	428	38,11	
1380	690	2	9151	292	31,34	
1100	550	2	7170	239	30,00	
1400	700	2	15075	361	41,76	
1380	690	2	10920	256	42,66	
<b>1460</b>	<b>730</b>	<b>2</b>	<b>11635</b>	<b>330</b>	<b>35,26</b>	

(2) .2003 730  
11635 1460  
8 7



16 12

---

4 2

(2003) ( ) : 16

10	30	110	440	
20	60	190	460	
40	90	200	420	
10	110	280	460	
	10	120	380	
<b>20</b>	<b>60</b>	<b>180</b>	<b>440</b>	

( (%) ) : 17

(%)	(%)	(%)	(%)	(%)	
99,5	0,5	99,2	0,8	17,8	
90,9	9,1	90,4	9,6	11,7	
99,0	1,0	99,6	0,4	53,4	
97,3	2,7	97,7	2,3	1,1	
97,3	2,7	97,7	2,3	1,1	
<b>96,4</b>	<b>3,6</b>	<b>95,9</b>	<b>4,1</b>	<b>17,4</b>	

: 18

( 100/ )	( 100/ )	
218,88	315,98	
213,39	314,02	
191,95	269,67	
204,79	292,96	
251,42	286,48	
<b>209,34</b>	<b>304,72</b>	

( 100/ 304,72)

( 100/ 209,34)

% 20

16,23)

154

60.000

(

120)

1150

.(

-

%29

%19

%22

%29

(2003)

:19

(%)	(%)	(%)	(%)	(%)	
100	26	20	24	30	
100	31	18	19	32	
100	27	17	22	34	
100	35	23	23	19	
100	37	14	23	26	
<b>100</b>	<b>29</b>	<b>19</b>	<b>22</b>	<b>29</b>	

	% 6,8	%26,8	
		56,11	
		% 16,7	66.000
			<u>-7</u>
			.2003
			<u>-8</u>
)		(2003	
2001	( 61,35)		
		% 7 ( )	
% 75	% 57)		
	(2001		
		UNIDAD	2002
.2001	% 10		564,8
		(%61,16)	345,43

7,15) 40,4 (% 4,42) 25 (% 27,25) 153,9  
(%)

% 62,56

% 9,80 27,58  
(pateras)

% 47,16

2,16 % 4,37 % 37  
% 6,81 % 1,18 % 1,32 %

735 2002  
801 66

( 3080)

5,4 2300

(6) 2003

) 12  
( 10 114

.(7)

-----  
" : (6)  
.2003

(7)

( )

( )

(GPS)

(1000)

-1

.5

-

10

) SPOT5

12

.( )

(

.20

**SPOT5**

**: 20**

( )	( )	K-J
2003 26	2003 12	34-279
2003 16	2003 12	34-280
2003 17	2003 16	35-279
2003 17	2003 16	35-280
2003 27	2003 12	36-279
2003 27	2003 12	36-279

2003

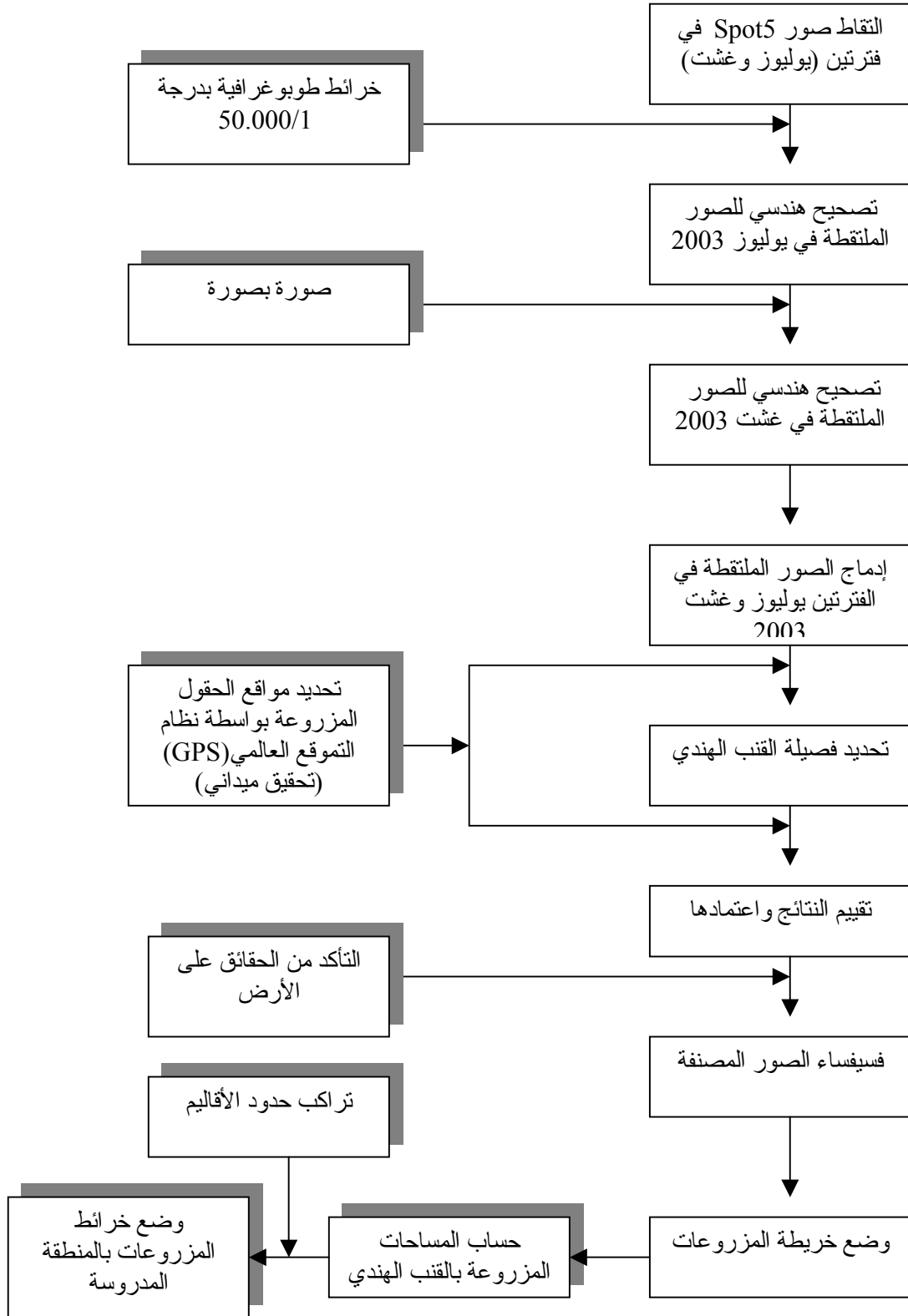
.50000/1

2003

. 100

.2003

: 5



Spot5

: -

( )

: \_\_\_\_\_

Spot5

-----  
- ( )

.2003

1CMP/



( \_\_\_\_\_ ) -

2003

)

.(21

1075

.(22 )

: 22

-	15	91	41	45	6	
-	41	224	71	62	20	
11	33	58	21	5	7	
-	-	-	8	11	7	
-	35	71	22	35	1	
-	4	63	21	25	21	

: 22

*									
	209	004.30068	35.06136	86	GPS	11	301	3	99
3	221	004.30112	35.06285	1		11	301	3	99
3	221	004.30129	35.06289	2		11	301	3	99
3	221	004.30106	35.06306	3		11	301	3	99
3	221	004.30102	35.06300	4		11	301	3	99
3	221	004.30116	35.06301			11	301	3	99

\*

. =4 . =3 . =2 . =1

-

)

(...

: 6

(1,2,3) RGB 2003 -Spot5

(1,2,3) RGB 2003 -Spot5

: \_\_\_\_\_

( )

")

(23 "

-1

-2

-3

-4

-5

-6

( ) -7

( )

: 23


" "

" " " "

.( ) ( )

\_\_\_\_\_ -

" "

) (pixels)  
 .( 10 :  
 .( )  
 : 24

	( <sup>2</sup> )	( <sup>2</sup> )	( <sup>2</sup> )		
% 77	174 706	40 207	<b>134 499</b>	( <sup>2</sup> )	
% 92	362 187	<b>333 321</b>	28 867	( <sup>2</sup> )	
-	<b>536 894</b>	373 528	163 366	( <sup>2</sup> )	
<b>% 87</b>	-	% 89	% 82		

:  
 2 174 706  
 134 449 (% 77) 2 536 894 )  
 " 2 40 207 2  
 366 "  
 499 2 163  
 (% 82) 2 134  
 894 / (333 321+ 134 499)] % 87  
 % 87 [536  
 13 (" " " ")  
 %

- -2

25 2003 22 30

4

( )

8

(... )

: 3 8

2040

\_\_\_\_\_ -

:

(%16) 225

25

: 25

%	/			
16	75	473	36	
15	115	749	34	
16	41	260	15	
18	71	389	27	
19	33	169	13	
<b>16</b>	<b>335</b>	<b>2040</b>	<b>125</b>	

5 3 2)

(7

: 26

/	
2	10 1
3	20 11
5	30 21
7	30 <

:

-

( )

:

-( )  
.2003

-----

-  
ICMP/

" "

...

: 9

: 27

490	30 500	36	
724	52 317	34	
253	21 524	15	
463	33 965	27	
177	8 735	13	
2 107	147 041	125	

125

1994

187 673

335

1 141 799

%16

1994

147 041

(%1,4)

2107

-

8

125

17 000

-

" " : ( )

" "

: " " •



2003 /  
2 200

2003

: 10

: " " \*

2107

. /

\_\_\_\_\_ -

0,3

1,3)

.(

225

2040

/ .%16

)

(...

: \_\_\_\_\_

$$p \times N = X$$

$$\frac{n}{N} = p$$

$$\sqrt{\left[ \frac{N-n}{N} \right] X \left[ \frac{p(1-p)}{n-1} \right]} = p_1 S_p$$

$$2S_p \pm p = 0,05 = \alpha \quad \% 95$$

:

$$\begin{aligned} &= N \\ &= n \\ &= p \end{aligned}$$

: 1

XV  
VII  
" " XIX  
-1873) .  
(1894  
1912 XX  
(1921-1912)  
1906  
( )  
1926  
" "

..

.

22

.1932

1916

1932

24

.(

)

(

)

1954

.

1956

.

.(

)

"

.

1958

"

"

.1959

1954

.

)

(

10.000

( )

)

.(

)

( )

) ( ) (... .(

2000

" "

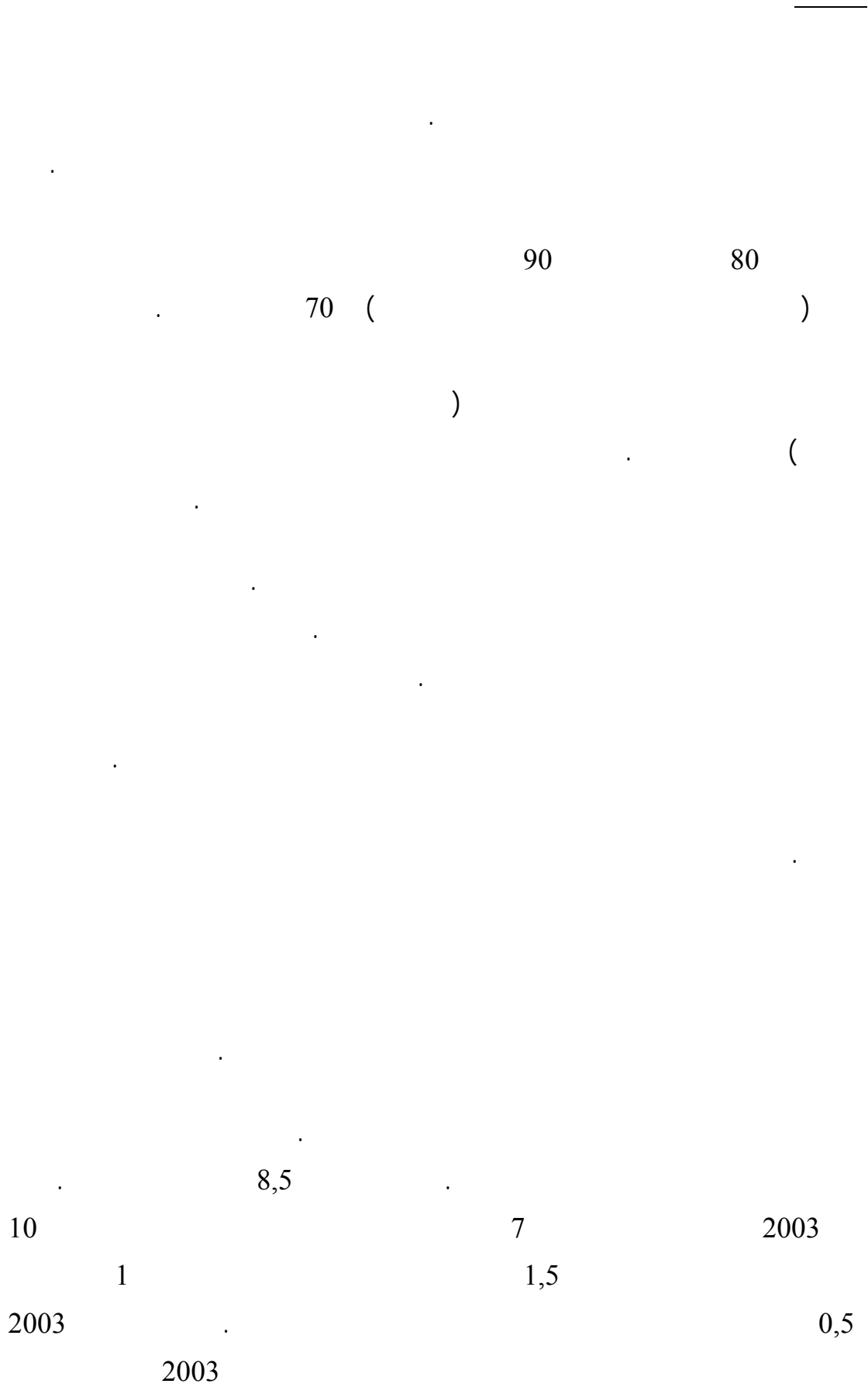
"... "

3

" "

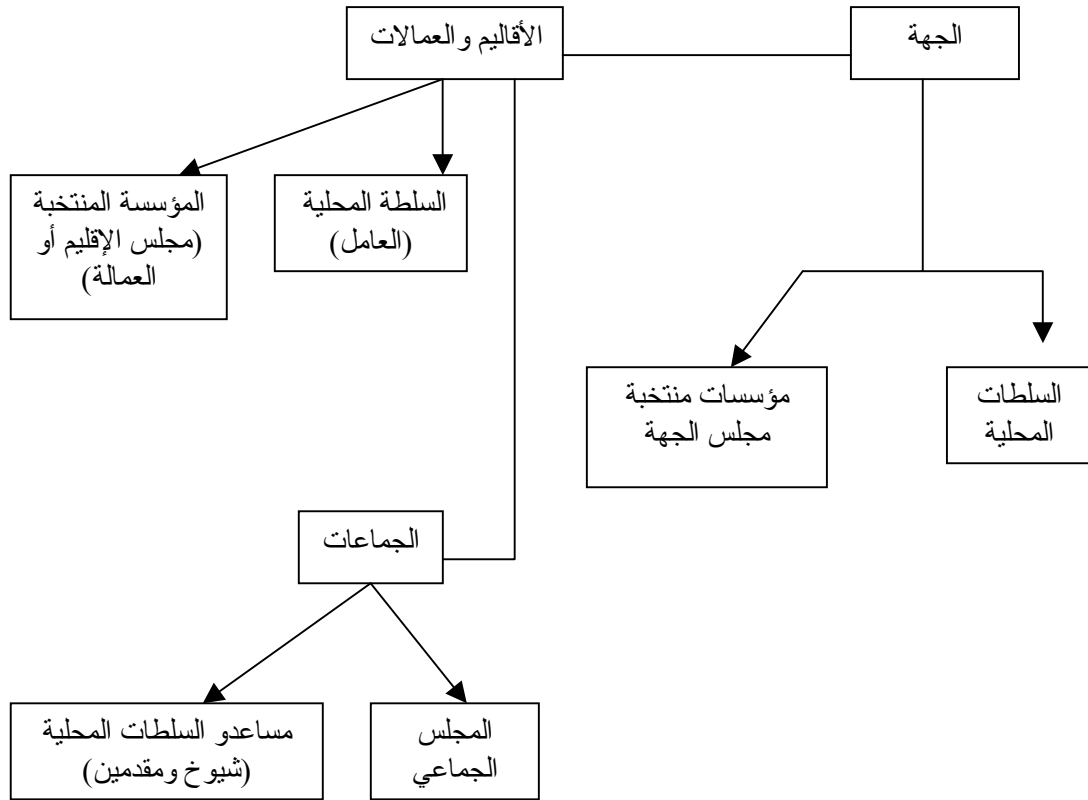
15

( )





	3		80	
				.2003
				6
.2003				
4	7,5		340	
		1190		3,5
	6			
	16.000	4000		
6850	14.810		( / 40 )	
)			3000 ( )	
				.(



	( )	
	)	( )
	(	( )
	)	( )
	(	( )
	( ) :	( )

:

- 1

- 1

-2

" "

-3

-4

" "

-5

" "

-6

.

250

-7