

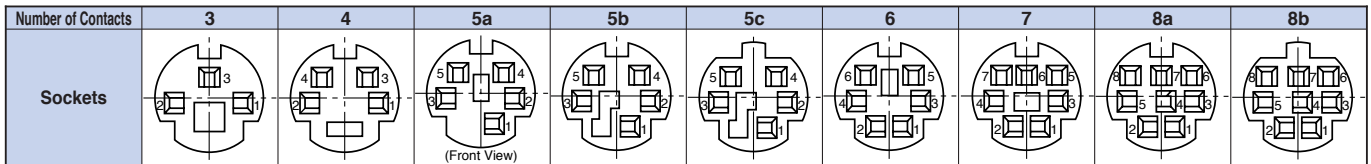
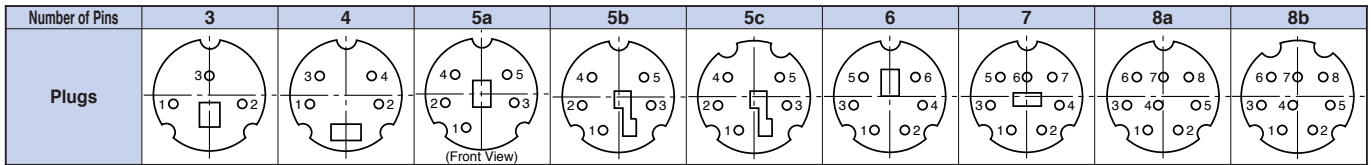
Contents

Contents / Specifications.....	1
Arrangements / Specifications for Standard Cables....	2
Products Reference Table.....	3~5
Plugs & Sockets Mating Table.....	6
Moulded Type Straight Plugs.....	7~8
Moulded Type Right Angul Plugs	9
Assembly Type Right Angul Plugs	10
For Super-VHS Plugs & Sockets	11
Horizontal Sockets.....	12~17
Vertical Sockets	18~21
Shassis Mount Type Sockets	22
In-Line Sockets	23
Horizontal Sockets (Quick Lock Type)	24~25
Plugs & In-Line Sockets (Quick Lock Type)	26
Sockets (Screw Lock Type).....	27
7P / 9P Connectors	28
9P Plugs (Moulded Type).....	29
9P sockets	30~31
10P Plugs (Quick Lock Type)	32
10P sockets (Quick Lock Type).....	33
10P Connectors (Quick Lock Type).....	34~36
13P Connectors (Quick Lock Type).....	37
13P Sockets (Quick Lock Type)	38
Vertical Dual Sockets	39~40
Insulating Caps	41

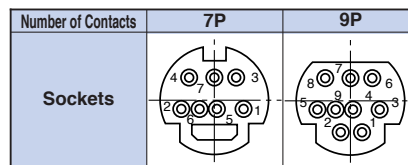
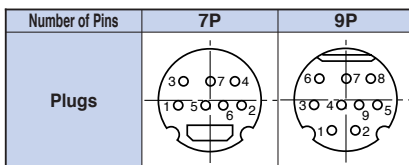
Specifications

Rating	1 A max. or 100 V AC 2 A max.12 V DC
Insulation Resistance	50 MΩ min. at 250 V DC
Dielectric Strength	250 V AC / 1 minute
Contact Resistance	30 mΩ max.
Engaging Force	45 N {4.5 kgf} max.
Separating Force	9 N to 30 N {0.9 kgf to 3 kgf}

Pin & Contact Arrangement



7P / 9P Connectors Pin & Contact Arrangement



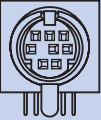













Specification for Standard Cords

- A. UL Standards
UL2835(60 °C 30 V VW-1 SC)
- B. Shielding
Overall shielding, 90 % braided wire
- C. Number of conductors
5 or 8
- D. Color
Black(semigloss)
Gray #1 (Ivory) semigloss
Gray #2 (Ivory) semigloss
- E. Cable Diameter
 ϕ 4.8

Reference:
Cable colors should be assigned according to pin numbers as shown below.

Pin No.	Number of Conductors						
	3	4	5	6	7	8	
1	Red	Red	Red	Red	Red	Red	
2	White	White	White	White	White	White	
3	Black	Black	Black	Black	Black	Black	
4		Yellow	Yellow	Yellow	Yellow	Yellow	
5			Blue	Blue	Blue	Blue	
6				Green	Green	Green	
7					Brown	Brown	
8						Gray	
Remarks	5-conductor cord is used. (In case of 3 pin, unnecessary conductors to be ce cut.)			8-conductor cord is used. (In case of 6 pin and 7 pin, unnecessary conductors to be cut.)			

Products Reference Table

Style	<i>h</i> or <i>ℓ</i> (mm)	Series No.	Photograph	Sockets												EMI Proof	Snapfit Type	Switch	Page No.	Remarks	
				Number of Contacts																	
				3	4	5a	5b	5c	6	7	8a	8b									
Horizontal Style 	<i>h</i> =4.6	TCS7726			•					•	•				●			12			
		TCS7736									•					●			12		
	<i>h</i> =6.5	TCS75□8		•	•	•	•	•	•	•	•	•							13		
		TCS7930		•	•	•	•		•	•	•	•				●			13		
		TCS75□9		•	•	•	•		•	•	•	•						1P-1T(N.C)	13		
		TCS7931		•	•	•	•		•	•	•					●	1P-1T(N.C)	13			
		TCS75□7		•	•	•	•		•	•	•				●	●			14		
		TCS7737-2□			•						•	•				●	●			14	
		TCS7927-7□			•	•					•	•	•	•			●			15	
		TCS7927-1□			•	•					•	•					●			15	
		TCS7927-5□			•	•					•	•	•	•			●	●		15	
		TCS7927-2□			•	•					•	•	•	•			●	●		15	
		TCS7927-6□			•	•					•	•	•	•			●	●		15	

Products Reference Table

Unit:mm

Sockets																		
Style	<i>h</i> or <i>ℓ</i> (mm)	Series No.	Photograph	/Number of Contacts								EMI Proof	Snapfit Type	Switch	Page No.	Remarks		
				3	4	5a	5b	5c	6	7	8a						8b	
Horizontal Style 	<i>h</i> =6.5	TCS7976		•										●	1P-1T(N.O)	16		
		TCS7969		•											●	1P-1T(N.O)	16	
		TCS7959		•											●	2P-2T	16	
	<i>h</i> =6.5	TCS71□7		•	•					•	•				●		24	Quick Lock
		TCS72□2		•						•	•				●		24	
		TCS72□6		•						•	•				●	●	24	
	<i>h</i> =8	TCS7934		•											●		16	
		TCS7953		•											●	2P-2T	17	
		TCS7939		•											●		27	Screw Lock
	Vartical Style 	—	TCS7910		•	•	•				•	•	•	•			22	Chassis Mount Type
TCS7943				•							•	•	•	•			22	

Plugs & Sockets Mating Table

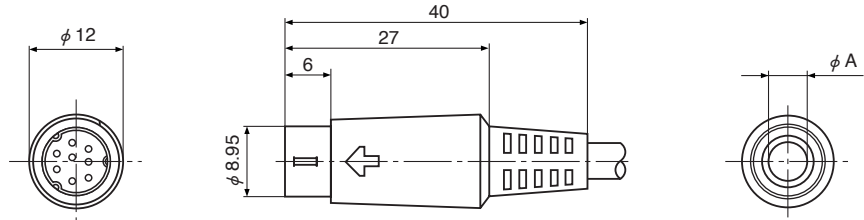
Unit:mm

Series No.	Mating Plugs										Insulating Caps
	TCP8500	TCP8600	TCP8300	TCP7100	TCP7282	TCP7285	TCP7286	TCP8700	TPX4115	TPX3784	
Photograph											
TCS7726	●	●	●	*	*	*	*	*			●
TCS7736	●	●	●	*	*	*	*	*			●
TCS75□8	●	●	●	*	*	*	*	*	●	*	●
TCS7930	●	●	●	*	*	*	*	*	●	*	●
TCS75□9	●	●	●	*	*	*	*	*	●	*	●
TCS7931	●	●	●	*	*	*	*	*	●	*	●
TCS75□7	●	●	●	*	*	*	*	*	●	*	●
TCS7737-2□	●	●	●	*	*	*	*	*	●	*	●
TCS7927-7□	●	●	●	*	*	*	*	*	●	*	●
TCS7927-1□	●	●	●	*	*	*	*	*	●	*	●
TCS7927-5□	●	●	●	*	*	*	*	*	●	*	●
TCS7927-2□	●	●	●	*	*	*	*	*	●	*	●
TCS7927-6□	●	●	●	*	*	*	*	*	●	*	●
TCS7976	●	●	●	*	*	*	*	*	●	*	●
TCS7969	●	●	●	*	*	*	*	*	●	*	●
TCS7959	●	●	●	*	*	*	*	*	●	*	●
TCS71□7	*	*	*	●	●	●	●	*			●
TCS72□2	*	*	*	●	●	●	●	*			●
TCS72□6	*	*	*	●	●	●	●	*			●
TCS7934	●	●	●	*	*	*	*	*	●	*	●
TCS7953	●	●	●	*	*	*	*	*	●	*	●
TCS7939	*	*	*	*	*	*	*	●	*	●	●
TCS7910	●	●	●	*	*	*	*	*	*	*	●
TCS7943	●	●	●	*	*	*	*	*	*	*	●
TCS7926	●	●	●	*	*	*	*	*			●
TCS76□8	●	●	●	*	*	*	*	*	●	*	●
TCS7948	●	●	●	*	*	*	*	*	●	*	●
TCS76□9	●	●	●	*	*	*	*	*	●	*	●
TCS71□6	*	*	*	●	●	●	●	*			●
TCS78□8	*	*	*	*	*	*	*	●	*	●	●
TCS7935	●	●	●	*	*	*	*	*	●	*	●
TCS7945	●	●	●	*	*	*	*	*	●	*	●
TCS7932	●	●	●	*	*	*	*	*	●	*	●
TCS7949	●	●	●	*	*	*	*	*	●	*	●
TCS7940	●	●	●	*	*	*	*	*	●	*	●
TCS7909	●	●	●	*	*	*	*	*	*	*	●
TCS7908	●	●	●	*	*	*	*	*	*	*	●
TCS71□5	*	*	*	●				*			●
Page No.	7	9	8	8	10	10	10	7	11	11	41

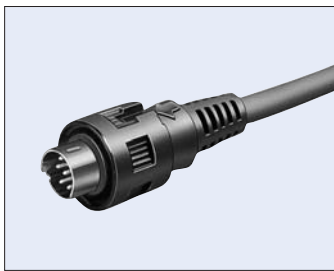
TCP8500 Series



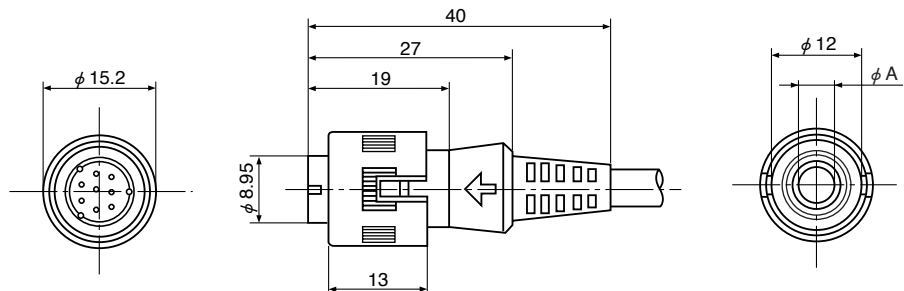
TCP8580



TCP8700 Series Screw Lock Type



TCP8780



Notes:

- The TCP8500, TCP8700 series plugs are made by insertion molding with cords. Plugs cannot be sold independently.
- The insulation materials of the above products are recognized by UL (94V-0).
- Combinations with sockets
 - Please see page 6.
 - The combinations of the 5P (a) plug and the 6P socket, the 8P (a) plug and the 6P socket, and the 8P (a) plug and the 7P socket are not designed for error connecting prevention.
- Color: Black, Gray # 1, Gray # 2

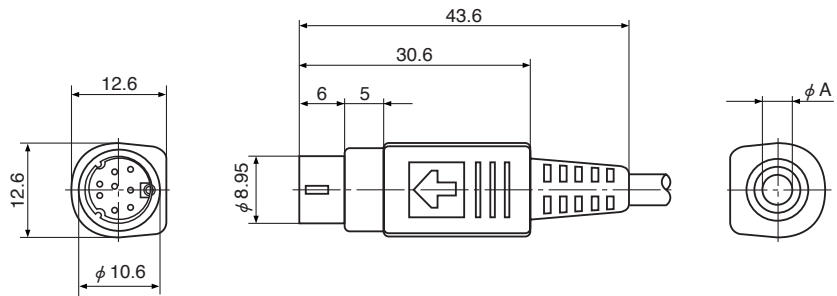
Number of Pin	3	4	5a	5b	5c	6	7	8a	8b
$\phi A=4.8\text{mm}$ (TCP8500 Series) Model No.	TCP8530	TCP8540	TCP8550	TCP8510	TCP8520	TCP8560	TCP8570	TCP8580	TCP8590
$\phi A=3.8\text{mm}$ (TCP8500 Series) Model No.	TCP8531	TCP8541	TCP8551	TCP8511	TCP8521	TCP8561	TCP8571	TCP8581	TCP8591
$\phi A=4.8\text{mm}$ (TCP8700 Series) Model No.	TCP8730	TCP8740	TCP8750			TCP8760	TCP8770	TCP8780	TCP8790

※ Please see page 2 for pin arrangement.

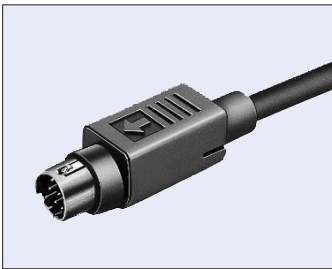
TCP8300 Series



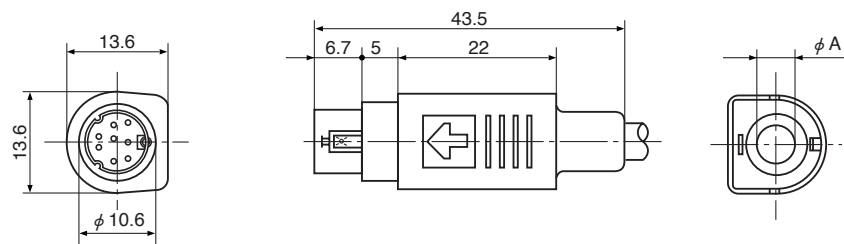
TCP8380
EMI-Proof



TCP7100 Series Quick Lock Type



TCP7180
EMI-Proof



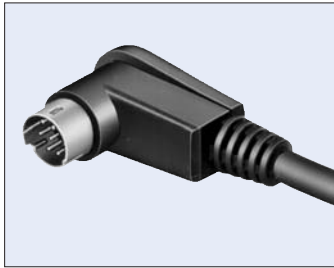
Notes:

1. The TCP8300, TCP7100 series plugs are made by insertion molding with cords. Plugs cannot be sold independently.
2. The insulation materials of the above products are recognized by UL (94V-0).
3. Combinations with sockets
 - ① Please see page 6.
 - ② The combinations of the 5P (a) plug and the 6P socket, the 8P (a) plug and the 6P socket, and the 8P (a) plug and the 7P socket are not designed for error connecting prevention.
4. Color: Black, Gray # 1, Gray # 2

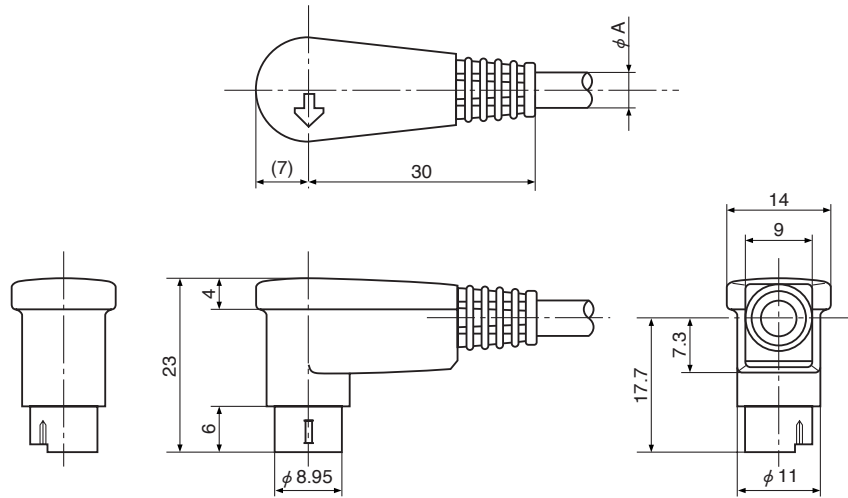
Number of Pin	3	4	5a	5b	6	7	8a	8b
$\phi A=4.8\text{mm}$ (TCP8300 Series) Model No.	TCP8330	TCP8340	TCP8350	TCP8310	TCP8360	TCP8370	TCP8380	TCP8390
$\phi A=3.8\text{mm}$ (TCP8300 Series) Model No.	TCP8331	TCP8341	TCP8351	TCP8311	TCP8361	TCP8371	TCP8381	TCP8391
$\phi A=4.8\text{mm}$ (TCP7100 Series) Model No.	TCP7130	TCP7140	TCP7150	/	TCP7160	/	TCP7180	/

※ Please see page 2 for pin arrangement.

TCP8600 Series A Type (Cord Drawing)



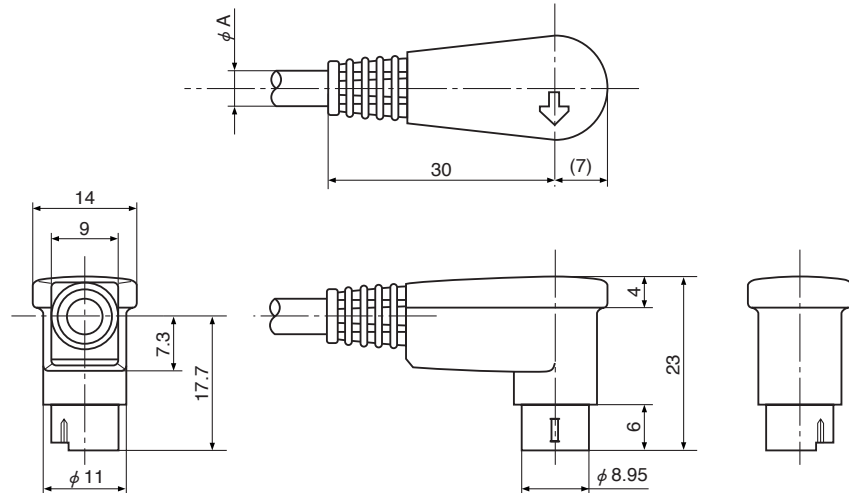
TCP8680



TCP8600 Series B Type (Cord Drawing)



TCP8685



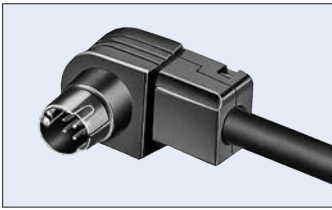
Notes:

1. The TCP8600 series plugs are made by insertion molding with cords. Plugs cannot be sold independently.
2. The insulation materials of the above products are recognized by UL (94V-0).
3. Combinations with sockets
 - ① Please see page 6.
 - ② The combinations of the 5P (a) plug and the 6P socket, the 8P (a) plug and the 6P socket, and the 8P (a) plug and the 7P socket are not designed for error connecting prevention.
4. Color: Black, Gray # 1, Gray # 2

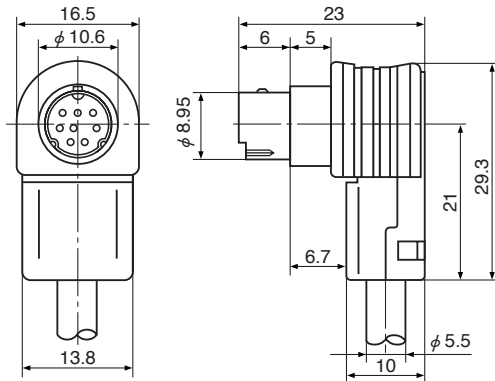
	Number of Pin	3	4	5a	6	7	8a
A Type	A=4.8mm Model No.	TCP8630	TCP8640	TCP8650	TCP8660	TCP8670	TCP8680
	A=3.8mm Model No.	TCP8631	TCP8641	TCP8651	TCP8661	TCP8671	TCP8681
B Type	A=4.8mm Model No.	TCP8635	TCP8645	TCP8655	TCP8665	TCP8675	TCP8685
	A=3.8mm Model No.	TCP8636	TCP8646	TCP8656	TCP8666	TCP8676	TCP8686

※ Please see page 2 for pin arrangement.

TCP7282 Series Slide Lock Type



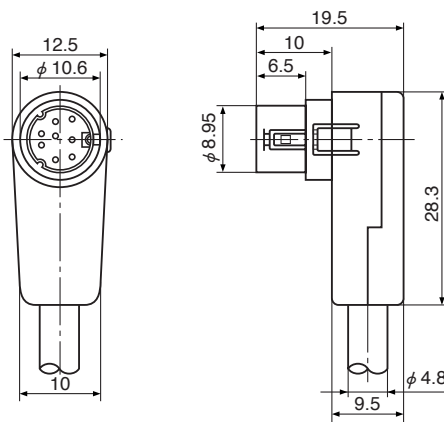
TCP7282-010105
(Color:Black)



TCP7285 Series Push Lock Type



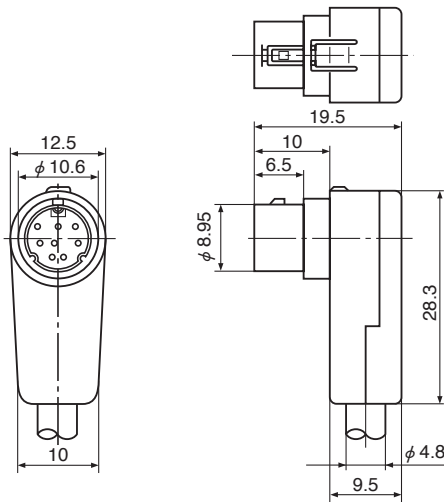
TCP7285-010105
(Color:Black)



TCP7286 Series Push Lock Type



TCP7286-010105
(Color:Black)



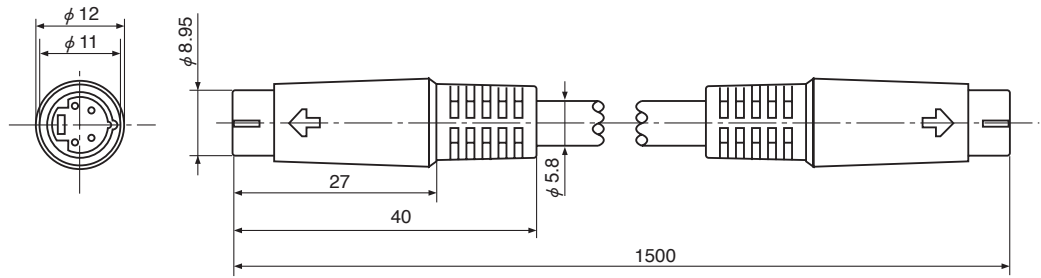
※ Combinations with sockets:TCS7187, TCS7282 (Please see page 24)

Number of Pin	4	6	8a
TCP7282 Series		TCP7262	TCP7282
TCP7285 Series	TCP7245	TCP7265	TCP7285
TCP8286 Series	TCP7246	TCP7266	TCP8286

TPX4115 Series



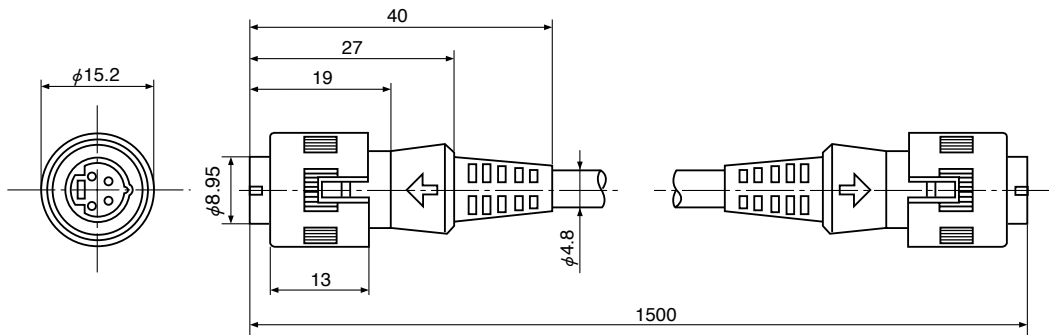
TPX4115



TPX3784 Series Screw Lock Type



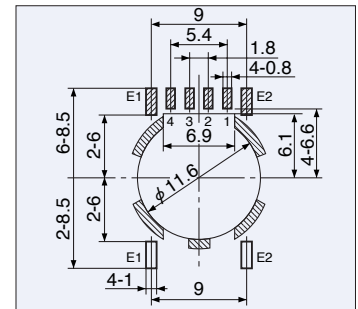
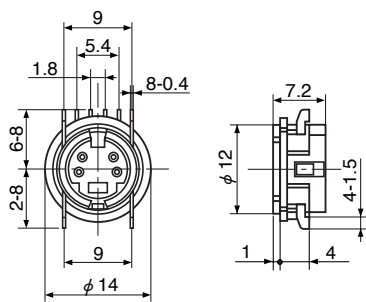
TPX3784



TCS7727



TCS7727-142010

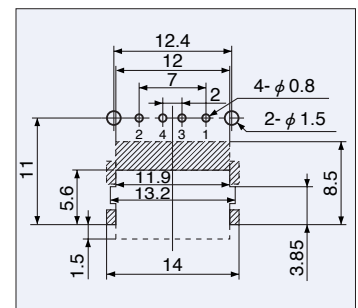
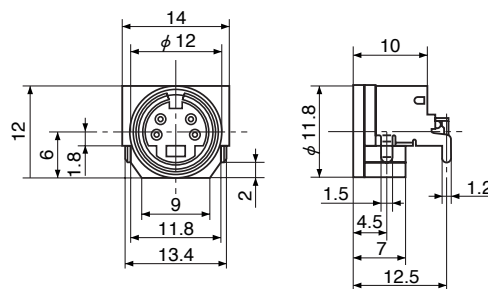


Hole Layout
(Bottom View)

TCS7748



TCS7748-5020177

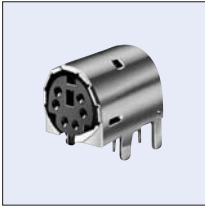


Land Layout
(Top View)

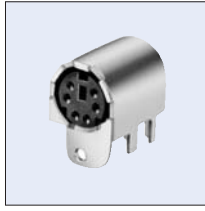
Horizontal Sockets

TCS7726 Series Low-Profile PC Board Type

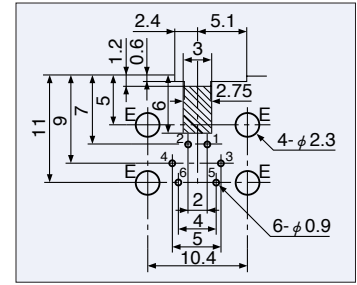
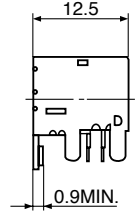
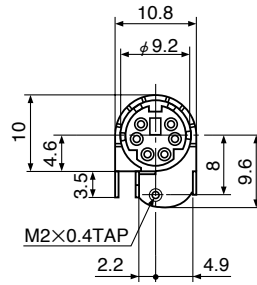
$h=4.6\text{mm}$



A-Type
TCS7726-1620387
EMI-Proof



B-Type
TCS7726-5622387
EMI-Proof



Hole Layout
(Bottom View)

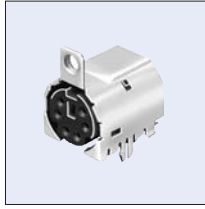
※Combinations with plugs: TCP8300 Series (Page 8) [TCS7726-5622387]

TCS7736 Series Low-Profile SMT Type

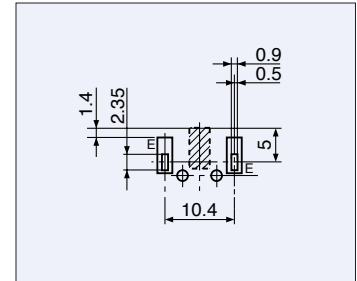
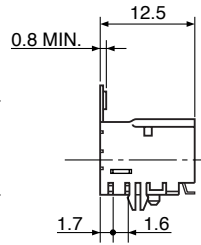
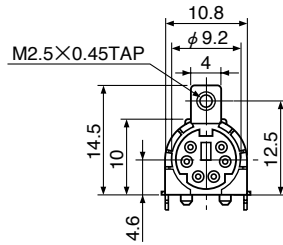
$h=4.6\text{mm}$



A-Type
TCS7736-9420387
EMI-Proof



B-Type
TCS7736-8623387
EMI-Proof



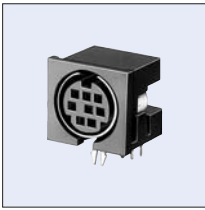
Land Layout
(Top View)

※Combinations with plugs: TCP8300 Series (Page 8) [TCS7736-8623387]

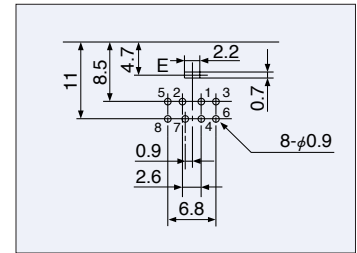
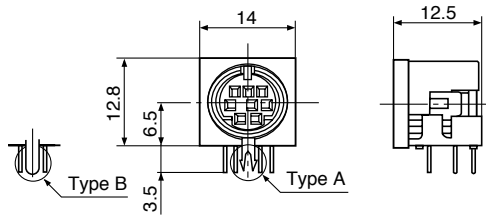
Number of Contact		4	6	8a
Arrangement				
TCS7726 Series	A-Type (without Frang)	TCS7726-1420387	TCS7726-1620387	TCS7726-1820387
	B-Type (with Frang)	TCS7726-5622387	TCS7726-5622387	TCS7726-5822387

TCS75□8 / 7930 Series

$h=6.5\text{mm}$



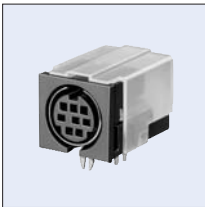
TCS7930-18-401



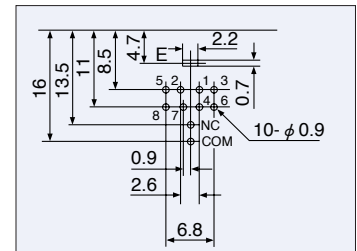
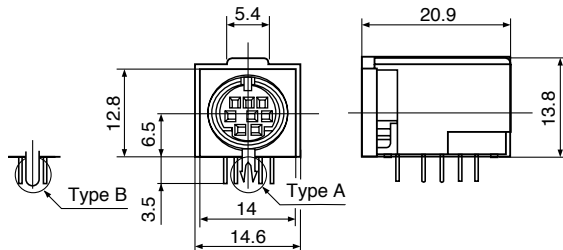
Hole Layout
(Bottom View)

TCS75□9 / 7931 Series

$h=6.5\text{mm}$



TCS7931-18-401



Hole Layout
(Bottom View)

TCS75□9 / 7931 Series

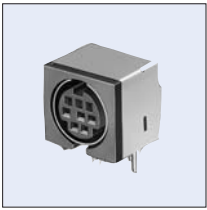
Number of Contact	3	4	5a	5b
Hole Layout (Bottom View)				
5c	6	7	8a	8b

※TCS75□8/7931 series are same products as TCS75□9/7931 series without holes for NC and COM.

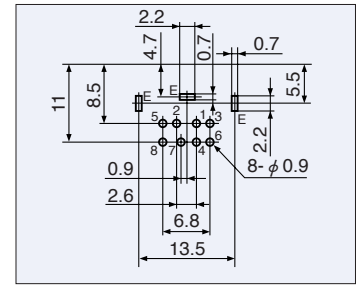
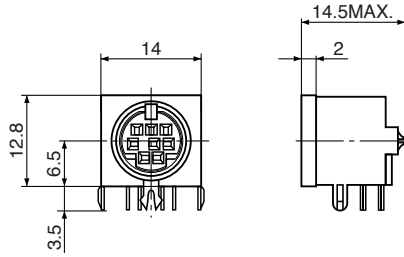
Terminal	Number of Contact	3	4	5a	5b	5c	6	7	8a	8b
Type B	Model No.	TCS7538-01-201	TCS7548-01-201	TCS7558-01-201	TCS7518-01-201	TCS7528-01-201	TCS7568-01-201	TCS7578-01-201	TCS7588-01-201	TCS7598-01-201
		TCS7539-01-201	TCS7549-01-201	TCS7559-01-201	TCS7519-01-201		TCS7569-01-201	TCS7579-01-201	TCS7589-01-201	
Type A		TCS7930-13-401	TCS7930-14-401	TCS7930-15-401	TCS7930-11-401		TCS7930-16-401	TCS7930-17-401	TCS7930-18-401	TCS7930-19-401
TCS7931-13-401		TCS7931-14-401	TCS7931-15-401	TCS7931-11-401		TCS7931-16-401	TCS7931-17-401	TCS7931-18-401		

TCS75□7 Series

$h=6.5\text{mm}$



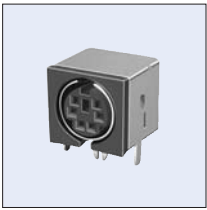
TCS7587-0121077
EMI-Proof



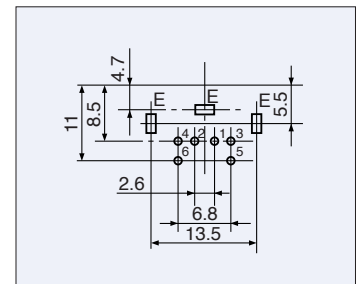
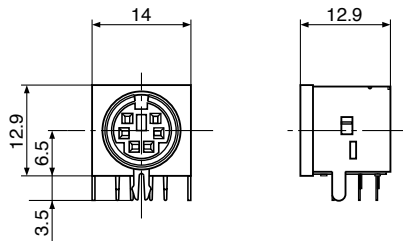
Hole Layout
(Bottom View)

TCS7737-2□ Series

$h=6.5\text{mm}$



TCS7737-2620887
EMI-Proof



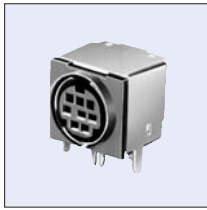
Hole Layout
(Bottom View)

Number of Contact	3	4	5a	5b
Hole Layout (Bottom View)				
5c	6	7	8a	8b

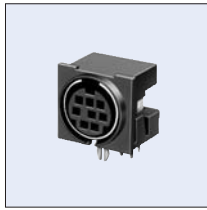
Number of Contact	3	4	5a	5b	6	7	8a	8b
Model No.	TCS7537-01-401	TCS7547-01-401	TCS7557-01-401	TCS7517-01-401	TCS7567-01-401	TCS7577-01-401	TCS7587-01-401	TCS7597-01-401
		TCS7737-242080			TCS7737-262080		TCS7737-282080	

TCS7927-□□-401 Series

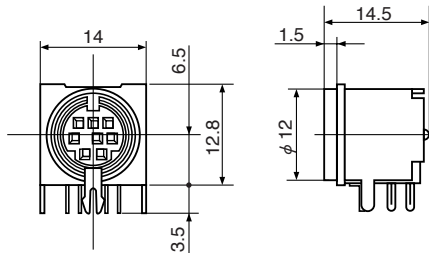
h=6.5mm



A-Type
TCS7927-5841177
EMI-Proof

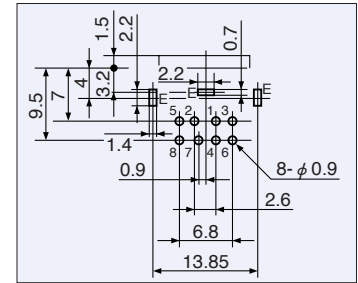


B-Type
TCS7927-78-401

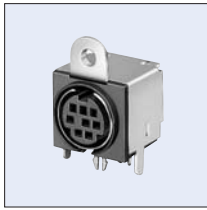


TCS7927-5841177

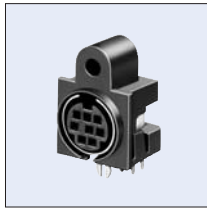
A-Type



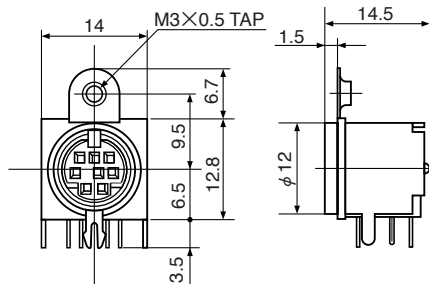
Hole Layout
(Bottom View)



A-Type
TCS7927-2801177
EMI-Proof

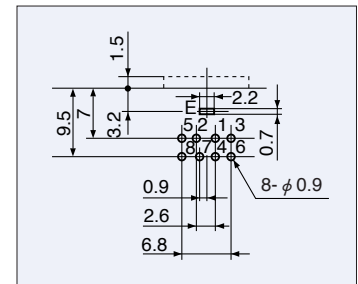


B-Type
TCS7927-18-401

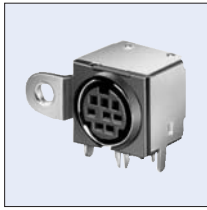


TCS7927-2801177

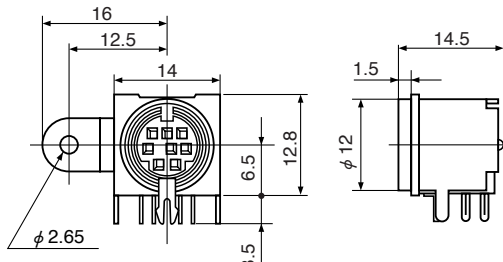
B-Type



Hole Layout
(Bottom View)



A-Type
TCS7927-68-401
EMI-Proof



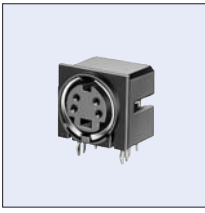
TCS7927-68-401

Number of Contact	3	4	5a	5b
Hole Layout (Bottom View)				
5c				

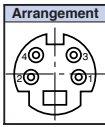
Number of Contact	4	5a	6	7	8a	8b
Model No.	TCS7927-74-401	TCS7927-75-401	TCS7927-76-401	TCS7927-77-401	TCS7927-78-401	TCS7927-79-401
	TCS7927-14-401	TCS7927-15-401	TCS7927-16-401		TCS7927-18-401	
	TCS7927-5441177	TCS7927-5541177	TCS7927-5641177	TCS7927-5741177	TCS7927-5841177	TCS7927-5941177
	TCS7927-2401177	TCS7927-2501177	TCS7927-2601177	TCS7927-2701177	TCS7927-2801177	TCS7927-2901177
	TCS7927-6421177	TCS7927-6521177	TCS7927-6621177	TCS7927-6721177	TCS7927-6821177	TCS7927-6921177

TCS7976 Series

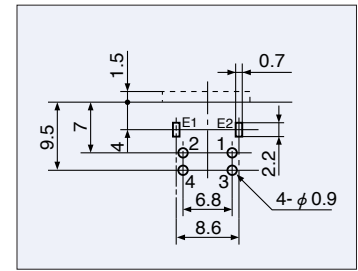
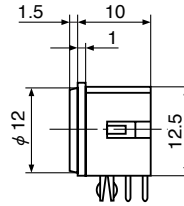
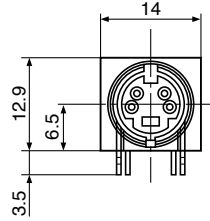
$h=6.5\text{mm}$



TCS7976-14-201



Separate Cover

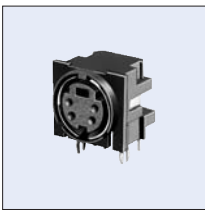


Hole Layout
(Bottom View)

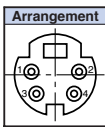
Note: The cover consists of two parts allowing it to be used as a 1P-1T switch when a plug is inserted.

TCS7969 Series Reverse key groove type

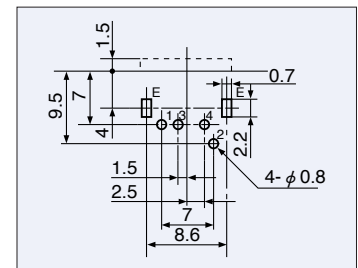
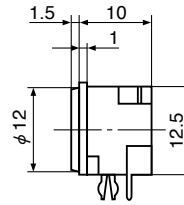
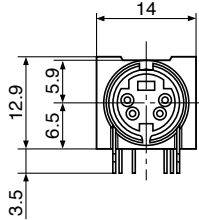
$h=6.5\text{mm}$



TCS7969-14-101



Separate Cover

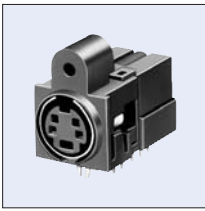


Hole Layout
(Bottom View)

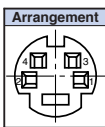
Note: The cover consists of two parts allowing it to be used as a 1P-1T switch when a plug is inserted.

TCS7959 Series

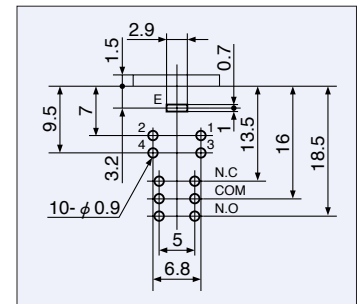
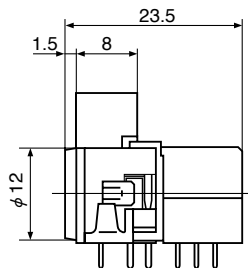
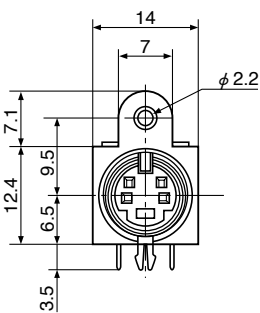
$h=6.5\text{mm}$



TCS7959-14-201



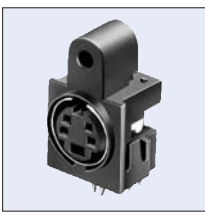
With Switch(2P-2T)



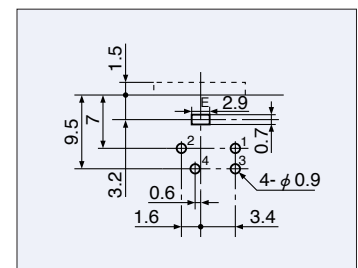
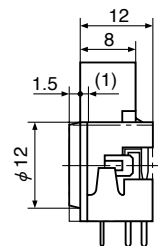
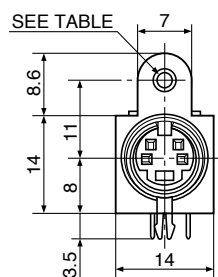
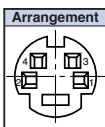
Hole Layout
(Bottom View)

TCS7934 Series

$h=8\text{mm}$



TCS7934-01-201

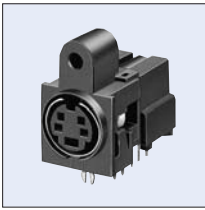


Hole Layout
(Bottom View)

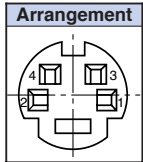
φ 2.2	TCS7934-01-201
φ 2.6	TCS7934-01-211

TCS7953 Series

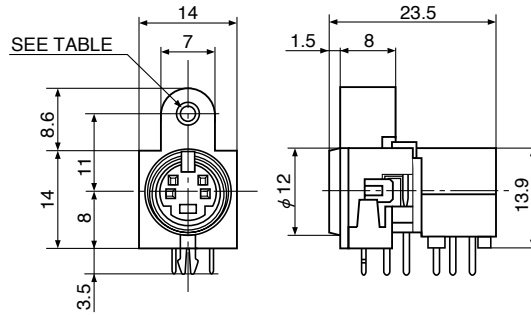
h=8mm



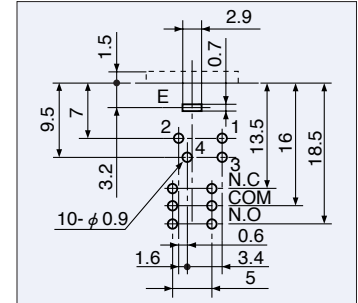
TCS7953-14-201



With Switch(2P-2T)



$\phi 2.2$	TCS7953-14-201
$\phi 2.6$	TCS7953-14-211



Hole Layout
(Bottom View)

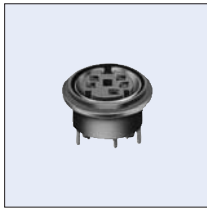
Notes: (Page 17, Page 18)

1. Combinations with plugs

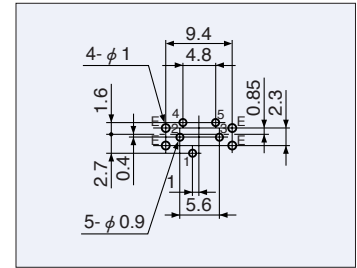
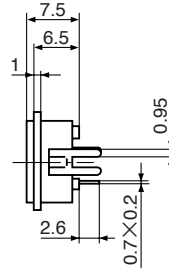
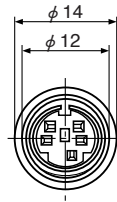
- ① Can be fit with the TCP8500 series (see page 7), the TCP8600 series (see page 9), the TCP8300 series (see page 8) and TPX4115 (see page 11).
- ② Connection with the TCP7100 series (page 8) is possible, but some specifications are not applicable. Please inquire concerning special specification.

TCS7926 Series

$l = 7.5\text{mm}$



TCS7926-15-301



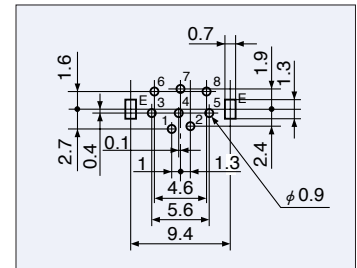
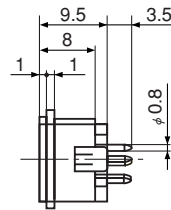
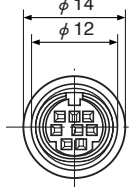
Hole Layout
(Bottom View)

TCS76□8 Series

$l = 9.5\text{mm}$



TCS7688-01-201



Hole Layout
(Bottom View)

TCS7926 Series

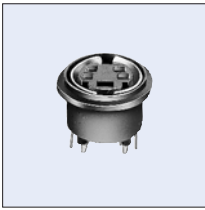
Number of Contact	5a	6	8a
Hole Layout (Bottom View)			
Model No.	TCS7926-15-301	TCS7926-16-301	TCS7926-18-301

TCS76□8 Series

Number of Contact	3	4	5a	5b
Hole Layout (Bottom View)				
Model No.	TCS7638-01-201	TCS7648-01-201	TCS7658-01-201	TCS7618-01-201
Number of Contact	6	7	8a	8b
Hole Layout (Bottom View)				
Model No.	TCS7668-01-201	TCS7678-01-201	TCS7688-01-201	TCS7698-01-201

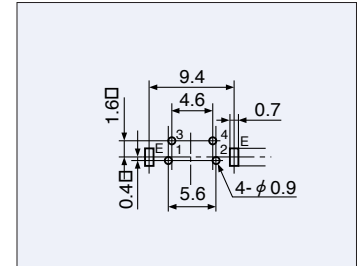
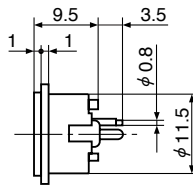
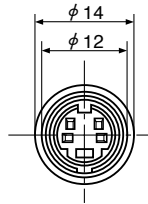
TCS7948 Series

$\ell = 9.5\text{mm}$



TCS7948-01-201

Separate Cover

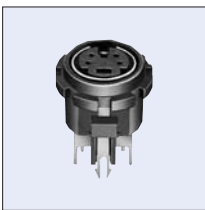


Hole Layout
(Bottom View)

Note: 1.The cover consists of two parts allowing it to be used as a 1P-1T switch when a plug is inserted.

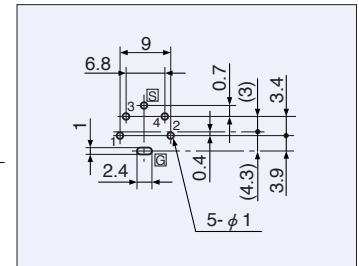
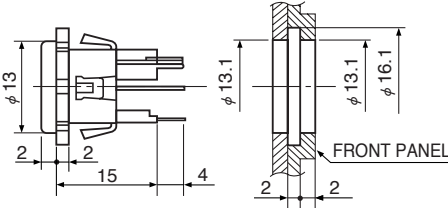
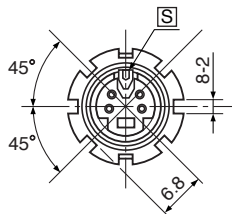
TCS7940-0120177

$\ell = 17\text{mm}$



TCS7940-0120177
With Contact for Switching

With Contact for Switching

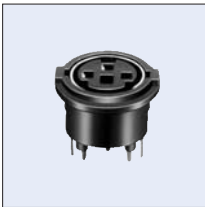


Hole Layout
(Bottom View)

Note: 1.The cover □ and contact ⊗ can be used as a 1P-1T switch when a plug is inserted.

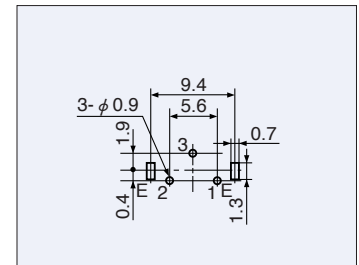
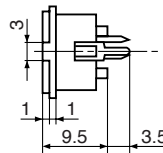
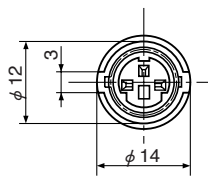
TCS71□6 Series Quick Lock Type

$\ell = 9.5\text{mm}$



TCS7136-01-201

With Contact for Switching



Hole Layout
(Bottom View)

Notes:

- Combinations with plugs
 - Can be fit with the TCP7100 series (see page 8).
 - Connection with the TCP8500 series (page 7), the TCP8600 series (see page 9) and the TCP8300 series (see page 8) are possible, but some specifications are not applicable. Please inquire concerning special specification.
 - The combinations of the 6P socket and the 5P (a) plug, the 6P socket and the 8P (a) plug, and the 7P socket and 8P (a) plug are not designed for error connecting prevention.

TCS7948 Series

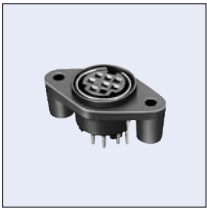
Number of Contact	4	6
Hole Layout (Bottom View)		
Model No.	TCS7948-01-201	TCS7948-16-201

TCS71□6 Series

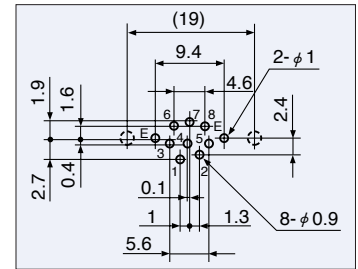
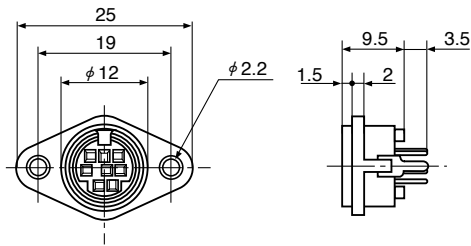
Number of Contact	3	8a
Hole Layout (Bottom View)		
Model No.	TCS7136-01-201	TCS7186-01-201

TCS76□9 Series

$l = 9.5\text{mm}$



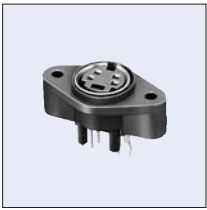
TCS7689-5120177



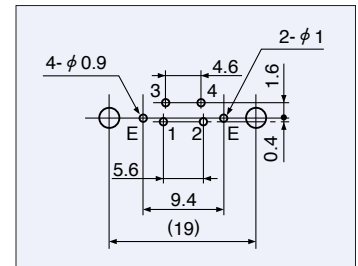
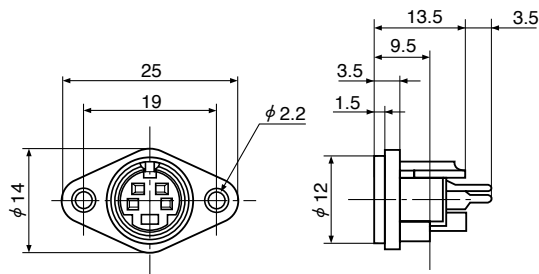
Hole Layout
(Bottom View)

TCS7935-14-201

$l = 13.5\text{mm}$



TCS7935-14-201



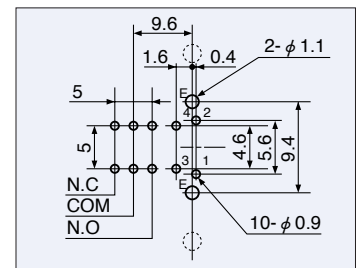
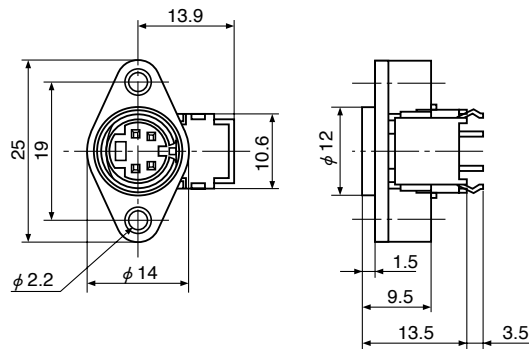
Hole Layout
(Bottom View)

TCS7945-14-201 2P-2T With Switch (2P-2T)

$l = 13.5\text{mm}$



TCS7945-14-201



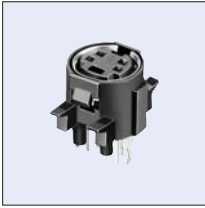
Hole Layout
(Bottom View)

TCS76□9 Series

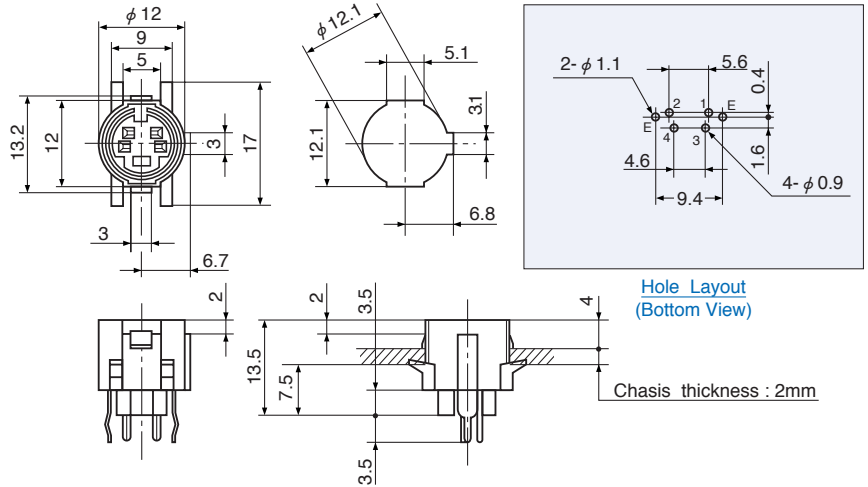
Number of Contact	4	8a
Hole Layout (Bottom View)		
Model No.	TCS7649-5120177	TCS7689-5120177

TCS7932 Series

$l = 13.5\text{mm}$



TCS7932-14-211



Notes:

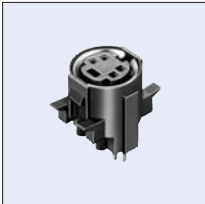
1. Combinations with plugs

- ① Can be fit with the TCP8500 series (see page 7), the TCP8600 series (see page 9), the TCP8300 series (see page 8) and TPX4115 (see page 5).
- ② Connection with the TCP7100 series (page 8) is possible, but some specifications are not applicable. Please inquire concerning special specification.
- ③ The combinations of the 6P socket and the 5P (a) plug, the 6P socket and the 8P (a) plug, and the 7P socket and 8P (a) plug are not designed for error connecting prevention.

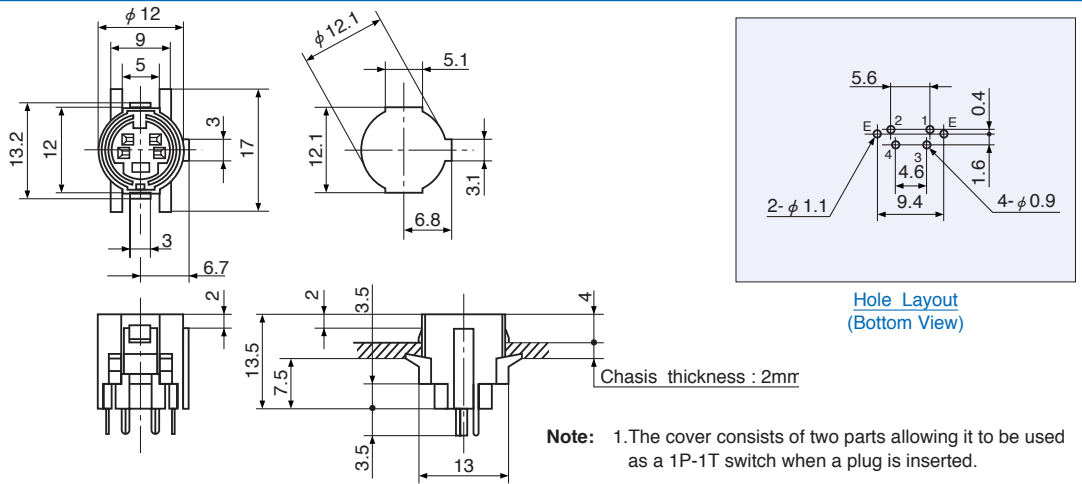
Number of Contacts	4	5a	8a
Hole Layout (Bottom View)			
Model No.	TCS7932-14-211	TCS7932-15-211	TCS7932-18-211

TCS7949-01-202

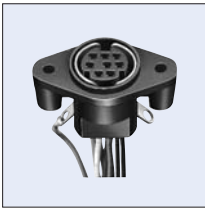
$l = 13.5\text{mm}$



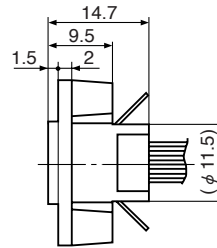
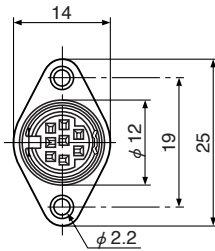
TCS7949-01-202



TCS7910 Series



TCS7910-18-201



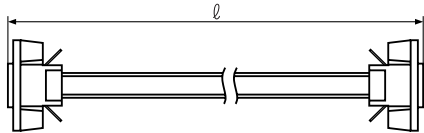
TCS7910 series with cords.

The TCS7910 series sockets equipped with cords are available as the TPX series. The following standard models are available. Regarding the length and color of the cord, please contact us.

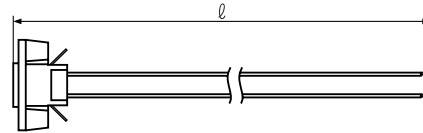
- Notes:**
1. Applicable wire size: AWG # 26 (UL1061)
The size of grounding wire is AWG # 22.
 2. An M3 round terminal (⊙) can also be used as a grounding terminal.

1. Model No. TPX3212

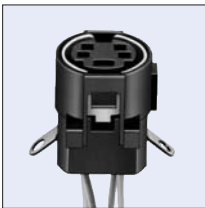
(TCS7910 Series – TCS7910 Series)



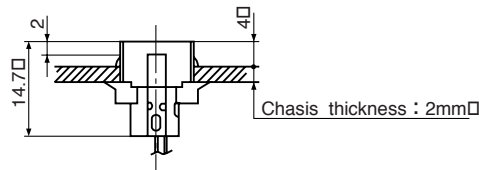
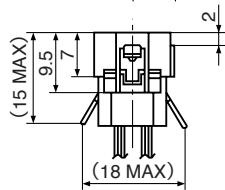
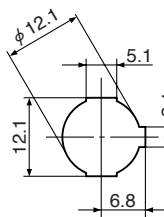
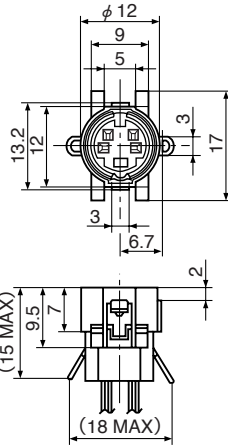
2. Model No. TPX3213 (TCS7910 Series – Solder-plated at the Lead Ends)



TCS7943



TCS7943



Number of Contact	3	4	5a	5b	5c	6	7	8a	8b
Arrangement									
Model No.	TCS7910-13-201	TCS7910-14-201	TCS7910-15-201			TCS7910-16-201	TCS7910-17-201	TCS7910-18-201	TCS7910-19-201
Model No.		TCS7943							

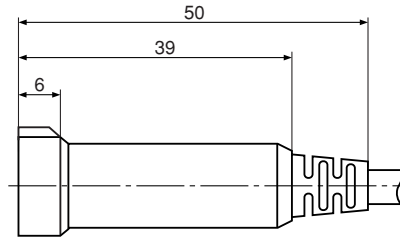
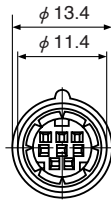
Notes:

1. Wires are connected to the contacts by crimping.
2. Applicable wire size: AWG # 26~30
Finished outside diameter: 1 mm max.
3. The socket is equipped with a cord.
Regarding the length and color of the cord, please contact us.
4. The contacts are optional. To crimp the contacts, a special tool is required.
5. Combinations with plugs
 - ① Can be fit with the TCP8500 series (see page 7) and TCP8600 series (see page 9).
 - ② The combinations of the 6P socket and the 5P (a) plug, the 6P socket and the 8P (a) plug, and the 7P socket and 8P (a) plug are not designed for error connecting prevention.

TCS7909/TCS7908 Series



TCS7909-18-0100



TCS7910 Series

Number of Contact	Suitable Cable Dia.	Color	4	5a	6	8a	8b
Model No.	$\phi A=4.8\text{mm}$	Black	TCS7909-14-0100	TCS7909-15-0100	TCS7909-16-0100	TCS7909-18-0100	TCS7909-19-0100
		Gray#1	TCS7909-14-0200	TCS7909-15-0200	TCS7909-16-0200	TCS7909-18-0200	TCS7909-19-0200
		Gray#2	TCS7909-14-0300	TCS7909-15-0300	TCS7909-16-0300	TCS7909-18-0300	TCS7909-19-0300
	$\phi A=3.8\text{mm}$	Black	TCS7908-14-0100	TCS7908-15-0100	TCS7908-16-0100	TCS7908-18-0100	TCS7908-19-0100
		Gray#1	TCS7908-14-0200	TCS7908-15-0200	TCS7908-16-0200	TCS7908-18-0200	TCS7908-19-0200
		Gray#2	TCS7908-14-0300	TCS7908-15-0300	TCS7908-16-0300	TCS7908-18-0300	TCS7908-19-0300

Notes:

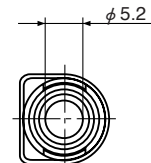
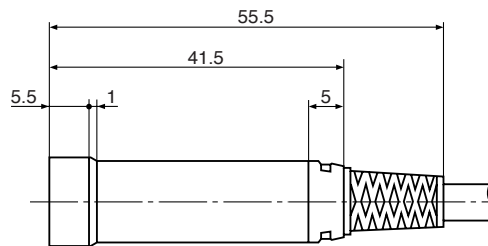
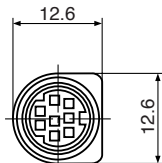
- Wires are connected to the contacts by crimping. The type of the contacts are shown in the table below.
- The insulation materials of the products are not recognized by UL but products with insulation materials recognized by UL are also available. Please contact us for details.
- The socket is equipped with a cable.
- The contacts are optional. To crimp the contacts, a special tool is required.
- Combinations with plugs
 - Can be fit with the TCP8500 series (see page 7) and TCP8600 series (see page 9).
 - The combinations of the 5P (a) plug and the 6P socket, the 8P (a) plug, and the 6P socket, and the 8P (a) plug and the 7P socket are not designed for error connecting prevention.

Part No.of Contact	Applicable Wire Size	Finished Outside Diameter	4	5a	6, 7	8a	8b
TCS9200-10-010	AWG #26~30	$\phi 1$ max.	All	All	All	All	All
TCS9200-11-010	AWG #22~24	$\phi 1.3$ max.	All	All	3, 4, 5, 6	3, 5	3, 5

TCS71□5 ワンタッチロックタイプ/Quick Lock Type



TCS7185-210105



TCS71□5 Series

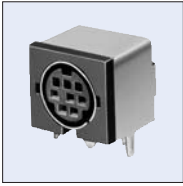
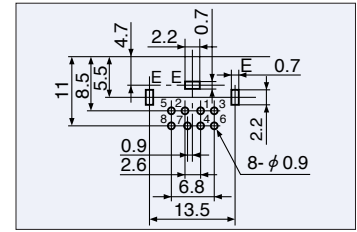
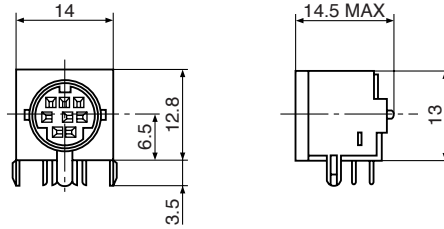
Number of Contact	4	6	8a
Model No.	TCS7145-210105	TCS7165-210105	TCS7185-210105

Notes:

- Combinations with plugs: TCP7100 Series (Page 8)
- The TCS71□5 series are sold as products with cable (TPX series). Please see Drawing and Specification for details.
- Color: Black, Gray # 1, Gray # 2

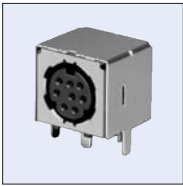
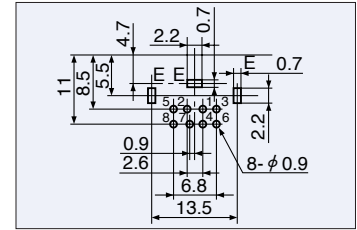
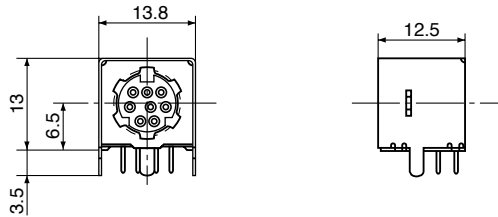
TCS71□7 Series

h=6.5mm


TCS7187-012177
EMI-Proof

 Hole Layout
(Bottom View)

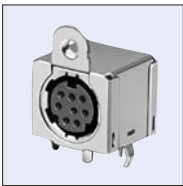
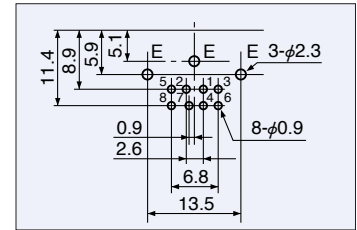
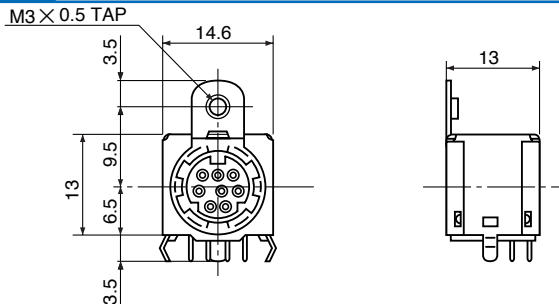
TCS72□2 Series

h=6.5mm


TCS7282-0121177
EMI-Proof

 Hole Layout
(Bottom View)

TCS72□6 Series

h=6.5mm


TCS7286-0124177
EMI-Proof

 Hole Layout
(Bottom View)

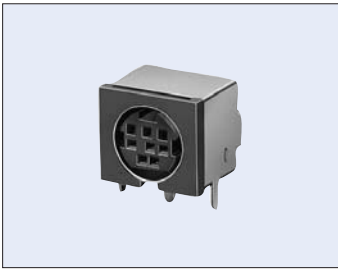
Notes:

- Combinations with plugs
 - Can be fit with the TCP7100 series (see page 8).
 - Connection with the TCP8500 series (page 7), the TCP8600 series (see page 9) and the TCP8300 series (see page 8) are possible, but some specifications are not applicable. Please inquire concerning special specification.
 - The combinations of the 6P socket and the 5P (a) plug, the 6P socket and the 8P (a) plug, and the 7P socket and 8P (a) plug are not designed for error connecting prevention.

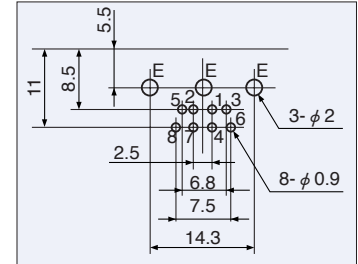
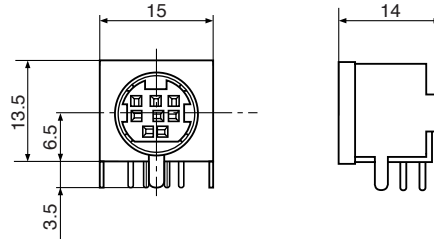
Number of Contact	3	4	6	8a
Hole Layout (Bottom View) TCS71□7 Series				
Model No.	TCS7137-012177	TCS7147-012177	TCS7167-012177	TCS7187-012177
Number of Contact	4	5a	6	8a
Hole Layout (Bottom View) TCS72□2 Series				
Model No.	TCS7242-0121177	TCS7252-0121177	TCS7262-0121177	TCS7282-0121177
Number of Contact	4	5a	6	8a
Hole Layout (Bottom View) TCS72□6 Series				
Model No.	TCS7246-0124177	TCS7266-0124177	TCS7266-0124177	TCS7286-0124177

TCS61□0 Series

h=6.5mm



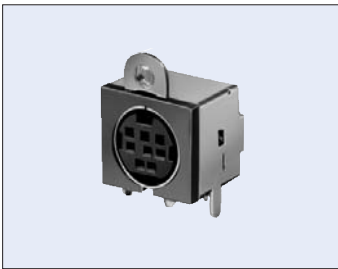
TCS6180-0110177
EMI-Proof



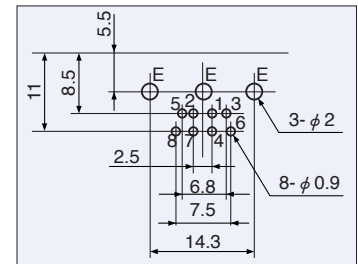
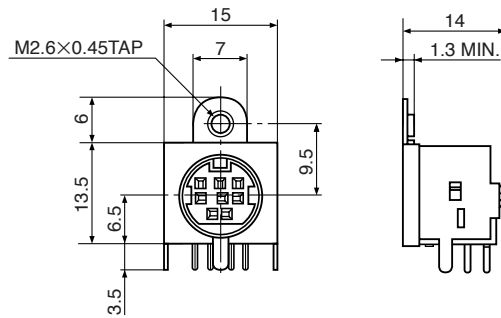
Hole Layout
(Bottom View)

TCS61□6 Series

h=6.5mm



TCS6186-0123177
EMI-Proof



Hole Layout
(Bottom View)

Notes:

Combinations with plugs.

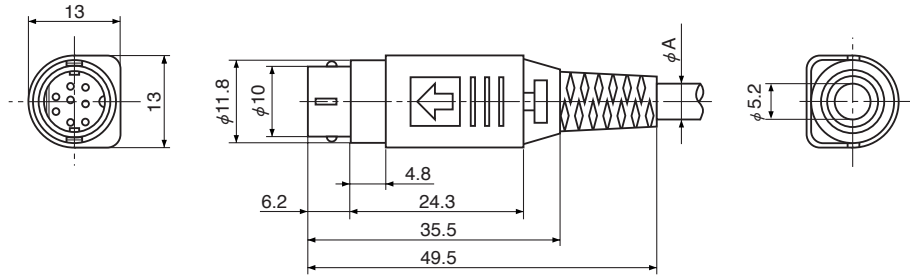
1. Can be fit with the TCP6100 series (see page 26).
2. The combinations of the 8P (a) plug and the 7P socket are not designed for error connecting prevention.

Number of Contact	4	5a	6	7	8a
Arrangement					
Hole Layout (Bottom View)					
Model No.	TCS6140-0110177 TCS6146-0123177	TCS6150-0110177 TCS6156-0123177	TCS6160-0110177 TCS6166-0123177	TCS6170-0110177 TCS6176-0123177	TCS6180-0110177 TCS6186-0123177

TCP6100 Series Plugs



TCP6180-0111267



Number of Contact		4	5a	6	7	8a
Suitable Cord Dia. A	Color					
	4.8mm	Black TCP6140-0111267	Black TCP6150-0111267	Black TCP6160-0111267	Black TCP6170-0111267	Black TCP6180-0111267
	Gray#1	Gray#1 TCP6140-0112267	Gray#1 TCP6150-0112267	Gray#1 TCP6160-0112267	Gray#1 TCP6170-0112267	Gray#1 TCP6180-0112267
	Gray#2	Gray#2 TCP6140-0113267	Gray#2 TCP6150-0113267	Gray#2 TCP6160-0113267	Gray#2 TCP6170-0113267	Gray#2 TCP6180-0113267

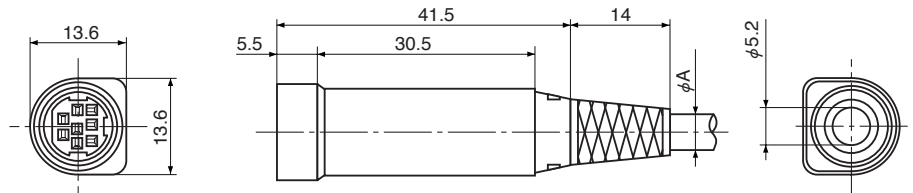
Notes:

- Wires are connected to the contacts by soldering.
- Parts, not assembled, are sold in a set. For the package style, refer please the specification.
- Combinations with sockets
 - Can be fit with the TCS6100 series (see page 25 to 26).
 - The combinations of the 8P (a) plug and the 7P socket are not designed for error connecting prevention.

TCS61□5 Series In-Line Sockets



TCS6185-011125



Number of Contact		4	6	7	8a
Suitable Cord Dia. A	Color				
	4.8mm	Black TCS6145-011125	Black TCS6165-011125	Black TCS6175-011125	Black TCS6185-011125
	Gray#1	Gray#1 TCS6145-011225	Gray#1 TCS6165-011225	Gray#1 TCS6175-011225	Gray#1 TCS6185-011225
	Gray#2	Gray#2 TCS6145-011325	Gray#2 TCS6165-011325	Gray#2 TCS6175-011325	Gray#2 TCS6185-011325

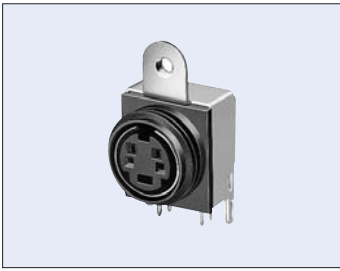
Notes:

- Wires are connected to the contacts by crimping. The types of the contacts are shown in the table below.
- The contacts are optional. To crimp the contacts, a special tool is required.
- Combinations with plugs
 - Can be fit with the TCP6100 series (see page 26).
 - The combinations of the 8P (a) plug and the 7P socket are not designed for error connecting prevention.

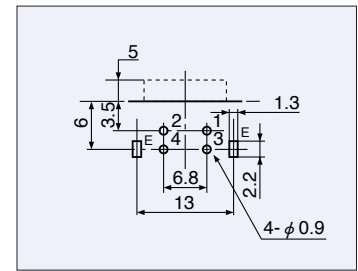
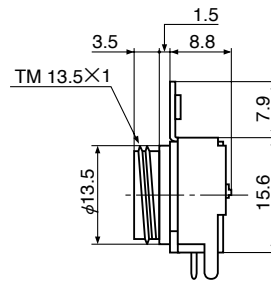
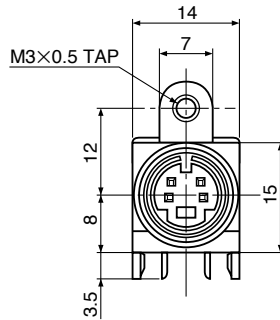
Part No. of Contact	Applicable Wire Size	Finished Outside Diameter	6	7	8a
TCS9200-10-010	AWG #26~30	φ 1 max.	All	All	All
TCS9200-11-010	AWG #22~24	φ 1.3 max.	3~6	3~7	3~8

TCS7939-14-401

$h=8\text{mm}$



TCS7939-1440177
EMI-Proof



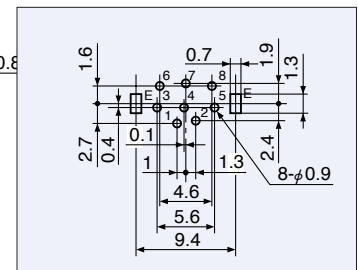
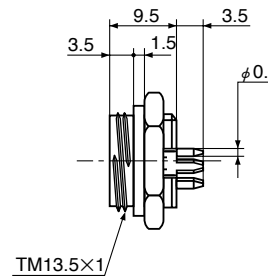
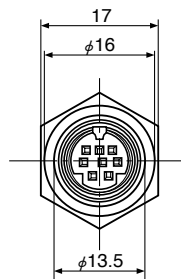
Hole Layout
(Bottom View)

TCS78 Series

$l=9.5\text{mm}$



TCS7888-0110177
EMI-Proof



Hole Layout
(Bottom View)

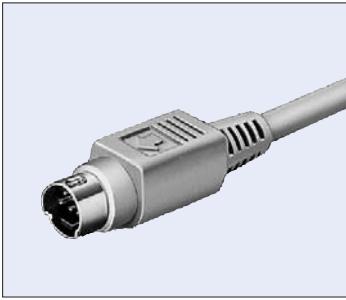
Notes:

1. Combinations with plugs
 - ① Can be fit with the TCP8500 series (see page 7), the TCP8600 series (see page 9), the TCP8300 series (see page 8), the TCP8700 series (see page 9) and TPX3784 (see page 9).
 - ② Connection with the TCP7100 series (page 8) is possible, but some specifications are not applicable. Please inquire concerning special specification.
 - ③ The combinations of the 6P socket and the 5P (a) plug, the 6P socket and the 8P (a) plug, and the 7P socket and 8P (a) plug are not designed for error connecting prevention.

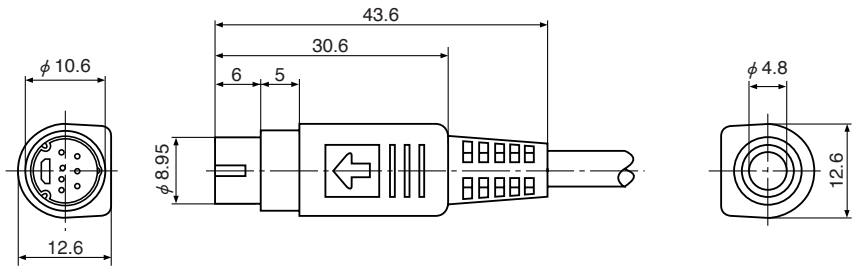
TCS78 Series

Number of Contact	3	4	5a
Hole Layout (Bottom View)			
Model No.	TCS7838-0110177	TCS7848-0110177	TCS7858-0110177
	6	8a	8b
	TCS7868-0110177	TCS7878-0110177	TCS7898-0110177

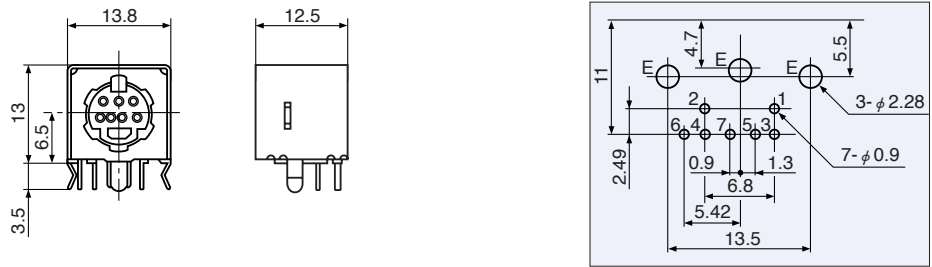
7P Connector



TCP8939-27
EMI-Proof



TCS7709-2721887
EMI-Proof

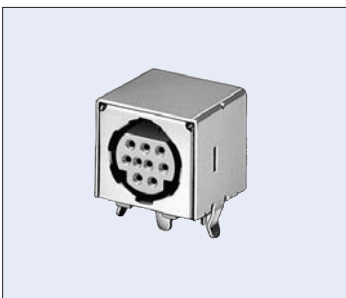
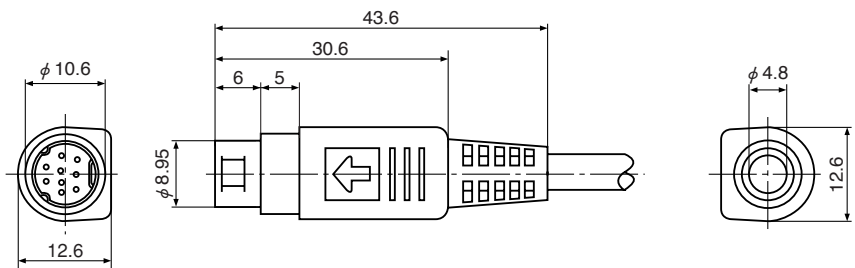


Hole Layout
(Bottom View)

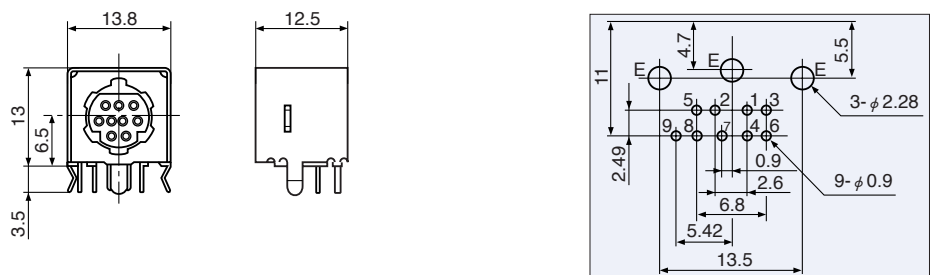
9P Connector



TCP8939-29
EMI-Proof



TCS7709-2921887
EMI-Proof



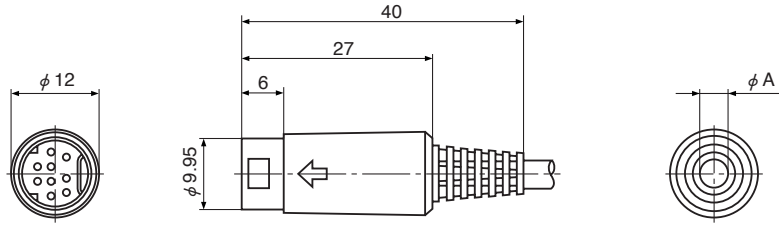
Hole Layout
(Bottom View)

TCP8920 Series



TCP8920

Suitable	4.8 mm	TCP8920
Cord Dia. A	3.8 mm	TCP8913



Combinations with sockets: TCS7913, TCS7928, TCS7712, TCS7717

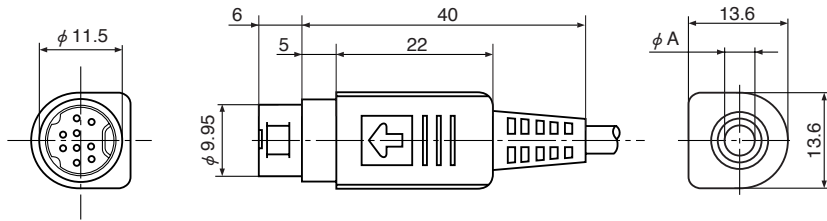
Color:Black, Gray#1, Gray#2

TCP8926 Series



TCP8926

Suitable	4.8 mm	TCP8926
Cord Dia. A	3.8 mm	TCP8923



Combinations with sockets: TCS7913-43, TCS7963, TCS7717

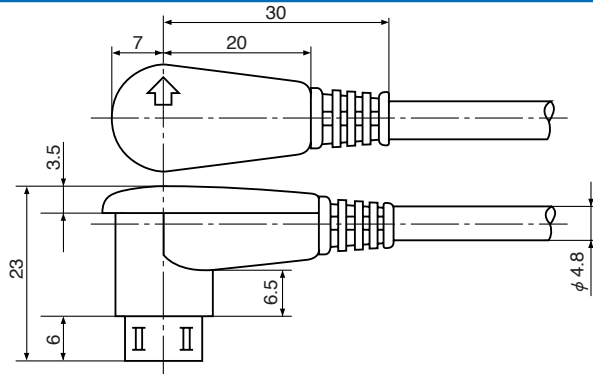
Color:Black, Gray#1, Gray#2

TCP8942 Series



TCP8942

Can be also available for 3.8 Dia.Cable.



Combinations with sockets: TCS7913

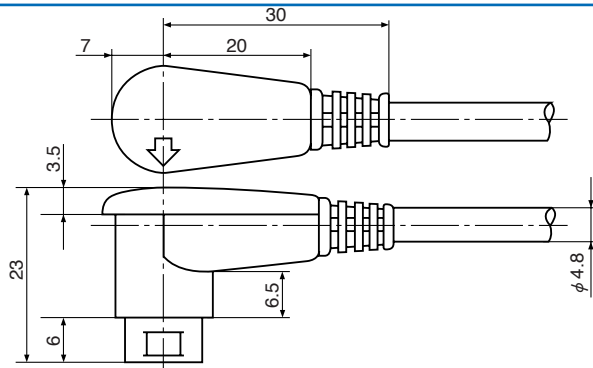
Color:Black

TCP8943 Series



TCP8943

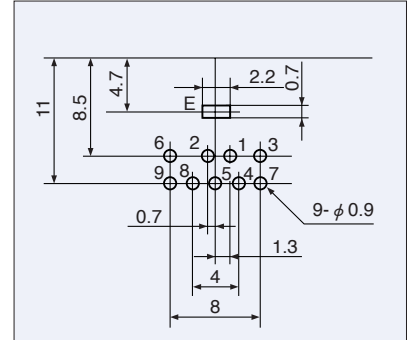
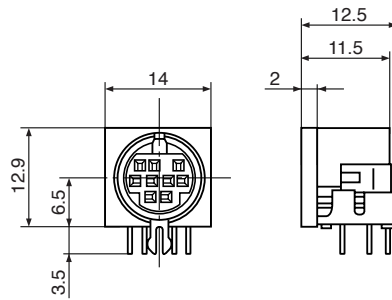
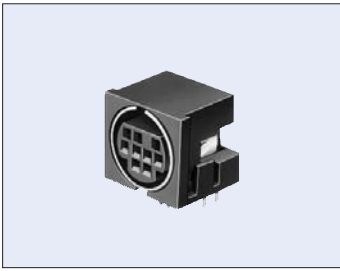
Can be also available for 3.8 Dia.Cable.



Combinations with sockets: TCS7913

Color:Black

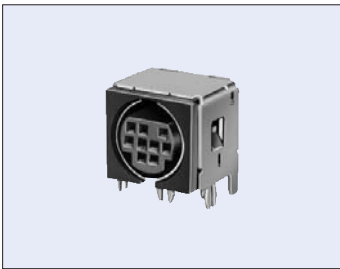
TCS7913-01-201



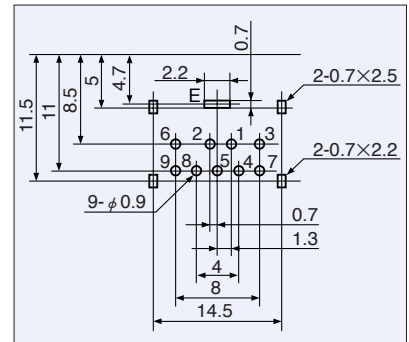
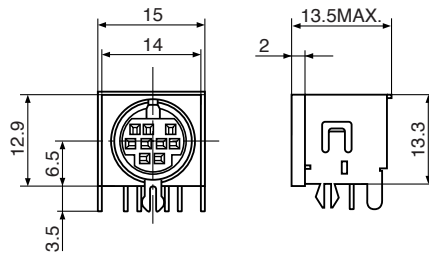
Combinations with plugs: TCP8913, TCP8920, TCP8926, TCP8923

Hole Layout
(Bottom View)

TCS7913-4320177



EMI-Proof



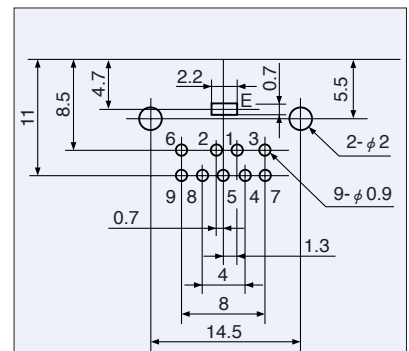
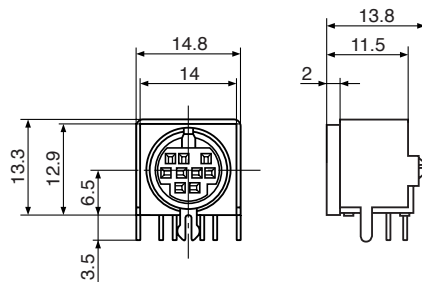
Combinations with plugs: TCP8923, TCP8926

Hole Layout
(Bottom View)

TCS7928-0120177



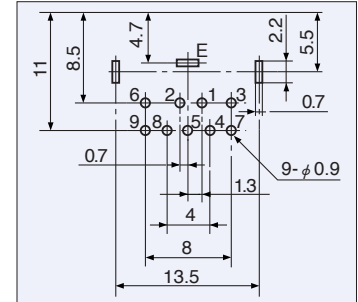
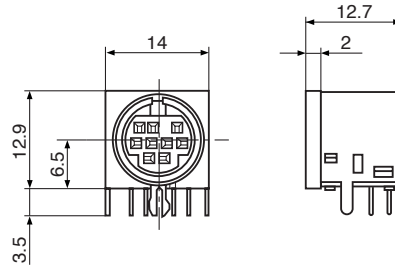
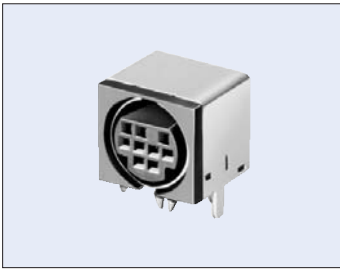
EMI-Proof



Combinations with plugs: TCP8923, TCP8926

Hole Layout
(Bottom View)

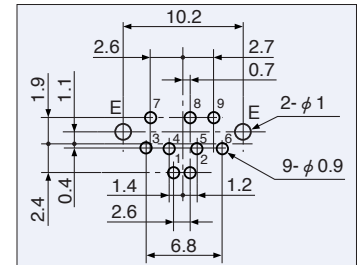
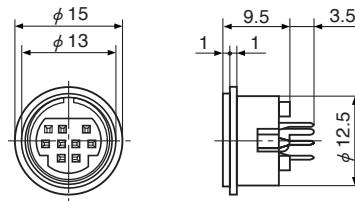
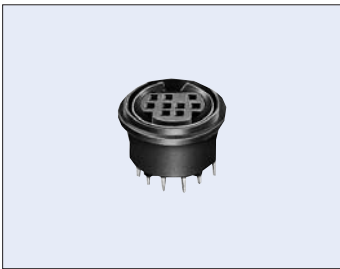
TCS7712-0120177



Combinations with plugs: TCP8920, TCP8913

Hole Layout (Bottom View)

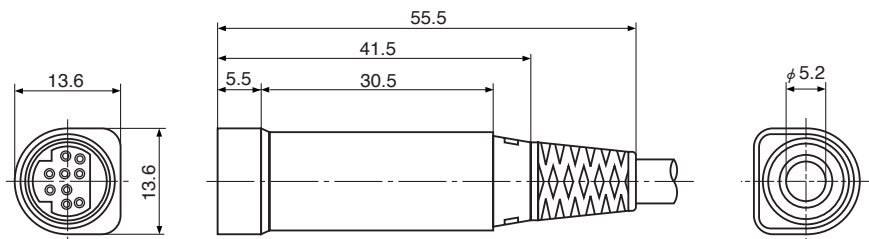
TCS7963-01-201



Combinations with plugs: TCP8920, TCP8913, TCP8926, TCP8923

Hole Layout (Bottom View)

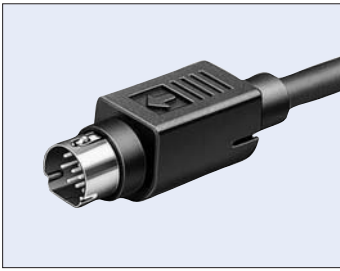
TCS7717 In-Line Socket



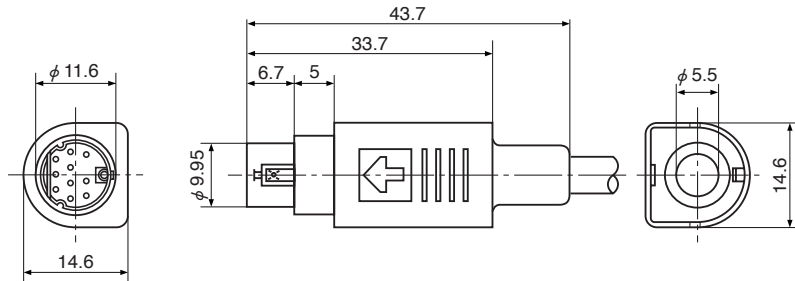
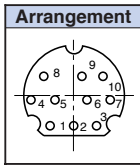
Combinations with plugs: TCP8920, TCP8926

Notes: The contacts are optional. To crimp the contacts, a special tool is required. Please see specification for details.

TCP8938 Series (A Type)



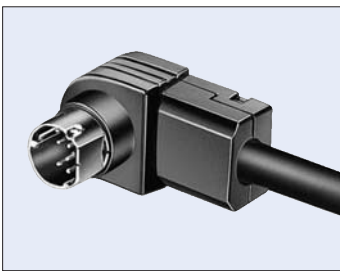
TCP8938
EMI-Proof



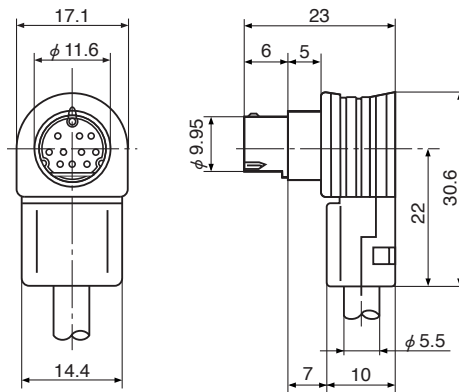
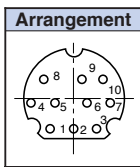
Combinations with plugs: TCP7705, TCP7718

Color:Black

TCP8948 Series (A Type)



TCP8948-210105



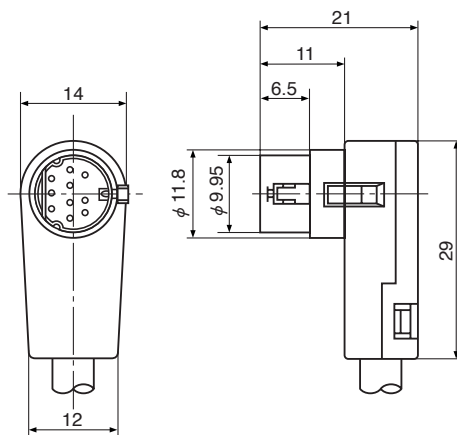
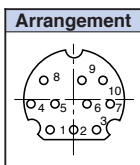
Combinations with plugs: TCP7705, TCP7718

Color:Black, Gray1, Gray2

TCP8949 Series (A Type)



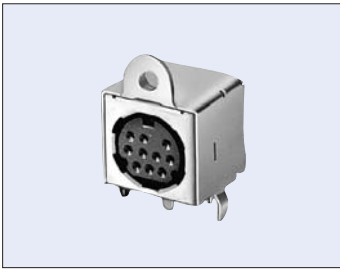
TCP8949-010105



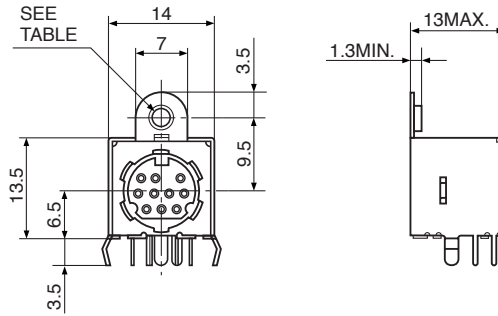
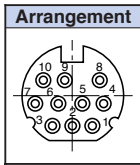
Combinations with plugs: TCP7705, TCP7718

Color:Black

TCS7705 Series (A Type)

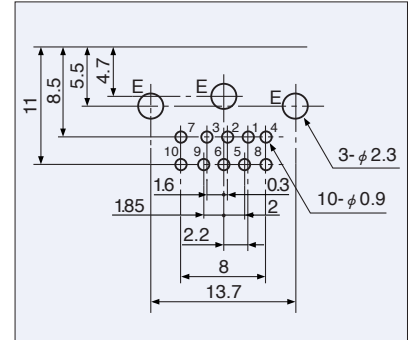


TCS7705-0120177
EMI-Proof



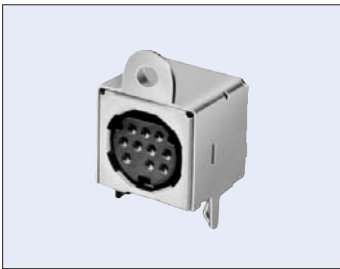
M 2.6×0.45 TAP	TCS7705-0121177
M 3×0.5 TAP	TCS7705-0120177

Combinations with plugs: TCP8938, TCP8948, TCP8949

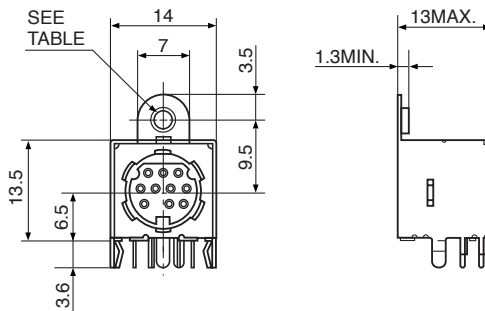
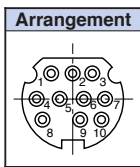


Hole Layout
(Bottom View)

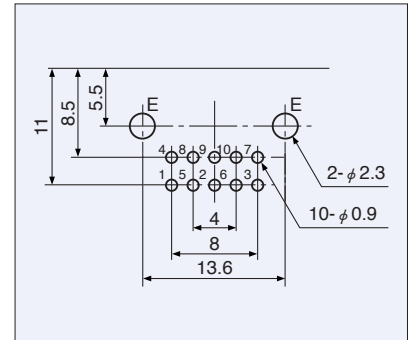
TCS7718 Series (A Type) Reverse key groove style



TCS7718-0120177



Combinations with plugs: TCP8938, TCP8948, TCP8949

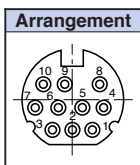


Hole Layout
(Bottom View)

TCS7715 In-Line Socket (A Type)

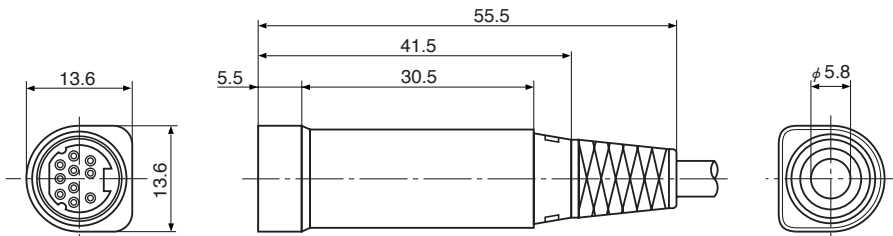


TCS7715-010105

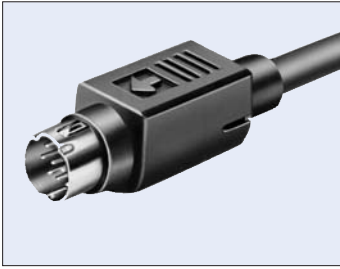


Combinations with plugs: TCP8938

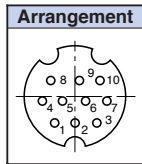
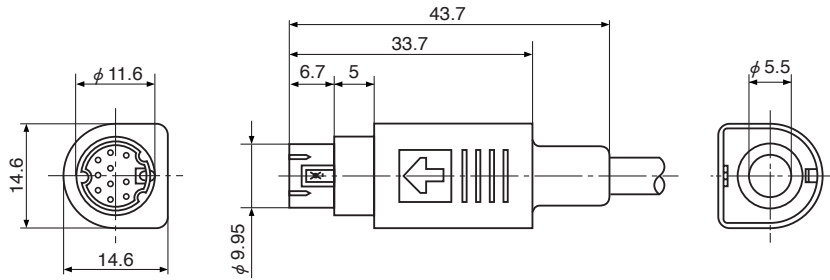
Notes: The contacts are optional. To crimp the contacts, a special tool is required. Please see specification for details.



TCP8945 Series (B Type)



TCP8945
EMI-Proof



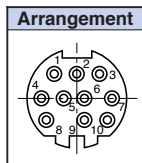
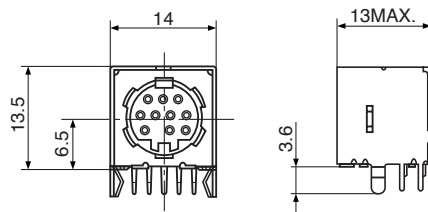
Combinations with Sockets: TCS7721

Color:Black

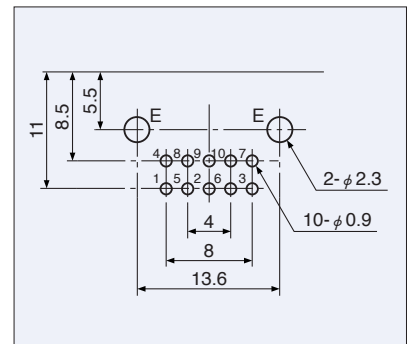
TCS7721 Series (B Type) Reverse key groove style



TCS7721-5120177
EMI-Proof

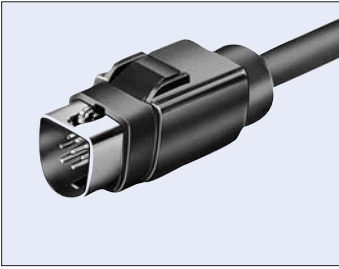


Combinations with plugs: TCP8945

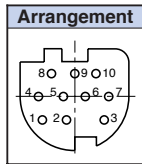
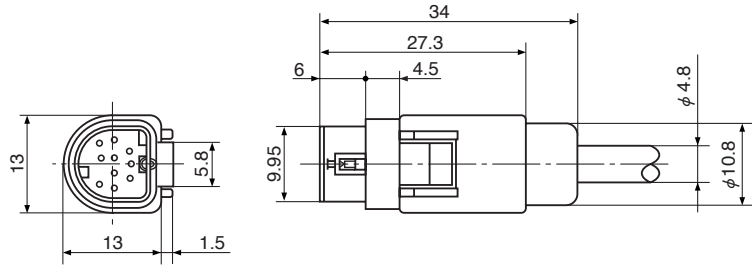


Hole Layout
(Bottom View)

TCP8946 Series (C Type)



TCP8946-010105



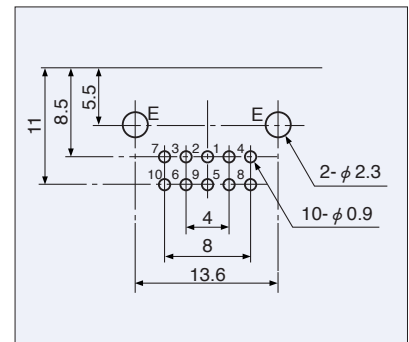
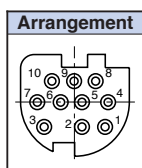
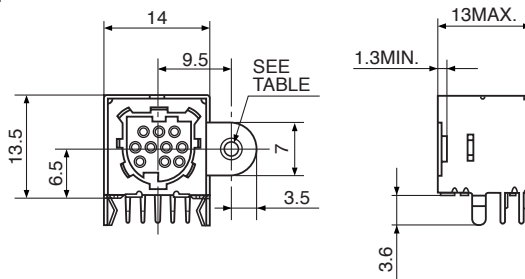
Combinations with Sockets: TCS7722

Color:Black, Gray#1, Gray#2

TCS7722 Series (C Type)



TCS7722-7120177
EMI-Proof

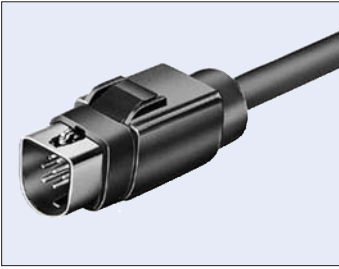


M 2.6×0.45 TAP	TCS7722-7121177
M 3×0.5 TAP	TCS7722-7120177

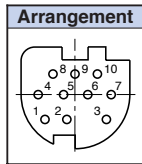
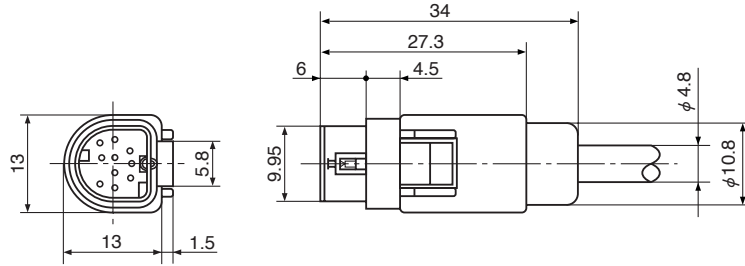
Combinations with plugs: TCP8946

Hole Layout
(Bottom View)

TCP8947 Series (D Type)



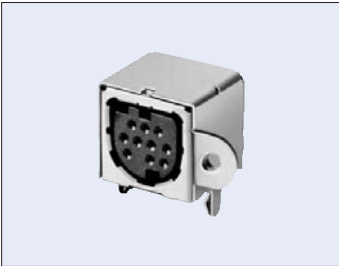
TCP8947-010105



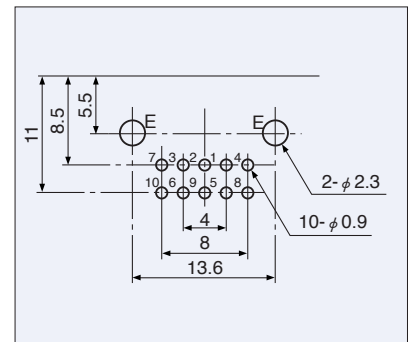
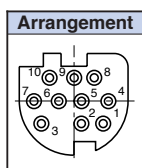
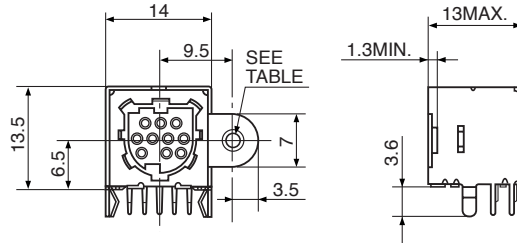
Combinations with Sockets: TCS7724

Color:Black, Gray#1, Gray#2

TCS7724 Series (D Type)



TCS7724-7120177

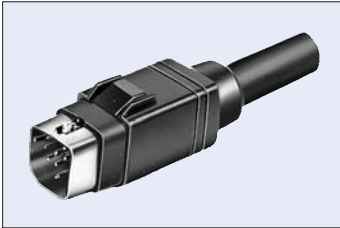


M 2.6X0.45 TAP	TCS7724-7121177
M 3X0.5 TAP	TCS7724-7120177

Combinations with plugs: TCP8947

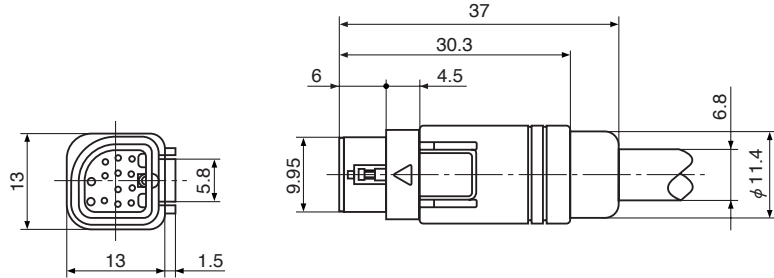
Hole Layout (Bottom View)

TCP8951/8955 Series



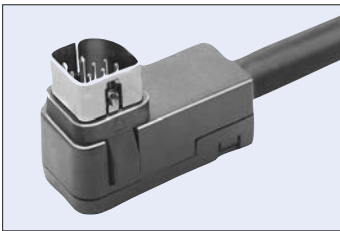
TCP8951-210105

Keyway	A	B
Arrangement		
Model No.	TCP8951-210105	TCP8955-210105



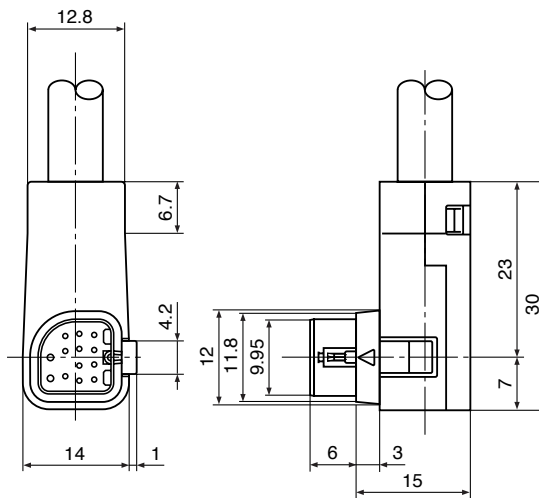
Color:Black, Gray #1, Gray #2

TCP8953/8957 Series



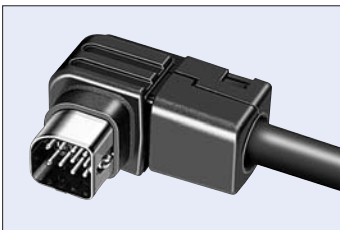
TCP8953-210105

Keyway	A	B
Arrangement		
Model No.	TCP8953-210105	TCP8957-210105



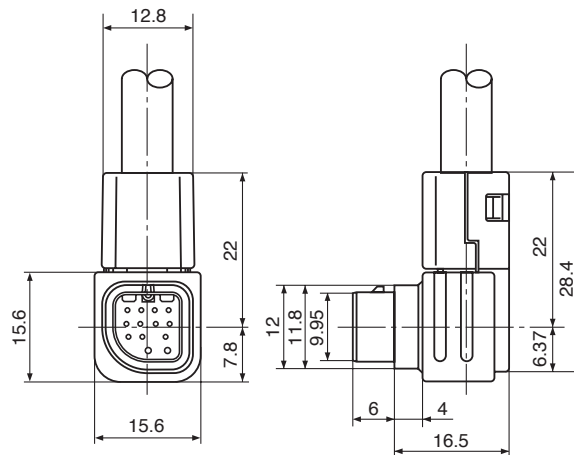
Color:Black, Gray #1, Gray #2

TCP8959/8961 Series



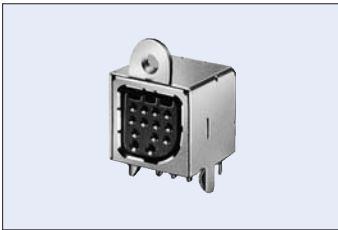
TCP8959-210105

Keyway	A	B
Arrangement		
Model No.	TCP8959-210105	TCP8961-210105

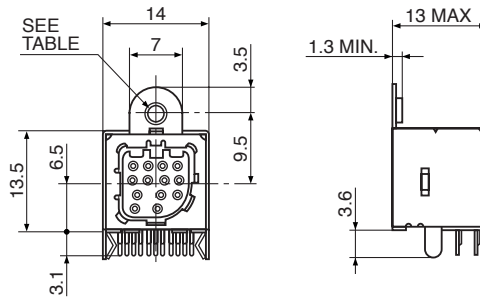


Color:Black, Gray #1, Gray #2

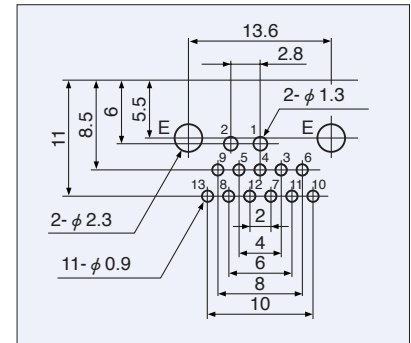
TCS7729/7741 Series



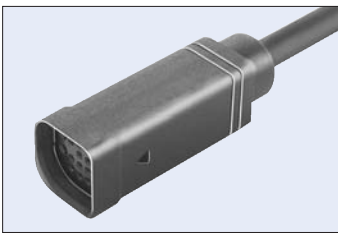
TCS7729-0120177



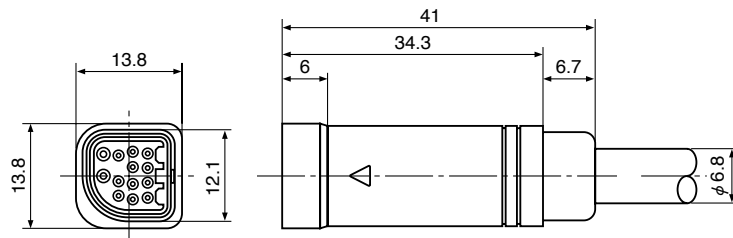
Keyway		A	B
Arrangement			
	Screw		
Model No.	M 2.6X0.45 TAP	TCS7729-0121177	TCS7741-012119
	M 3X0.5 TAP	TCS7729-0120177	TCS7741-012019
Combinations with plugs		TCP8951-210105	TCP8955-210105
		TCP8953-210105	TCP8955-210105


 Hole Layout
(Bottom View)

TCS7730/7745 Series



TCS7730-210105



Keyway	A	B
Arrangement		
Model No.	TCS7730-210105	TCS7745-210105
Combinations with plugs	TCP8951-210105	TCP8955-210105
	TCP8953-210105	TCP8957-210105

Color:Black, Gray #1, Gray #2

Specifications (TCP8951 · 8955 · 8953、TCS7729 · 7741 · 7730 Series)

Rating

- Pin Nos. 1 & 2: 3 A 16 V DC max.
- Pin Nos. 3~13: 2 A 12 V DC max.

Insulation Resistance:

50 MΩ min. at 250 V DC

Dielectric Strength:

250 V AC / 1 minute

Contact Resistance:

30 mΩ max.

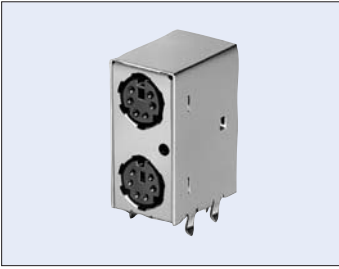
Engaging Force:

44 N {4.5 kgf} max.

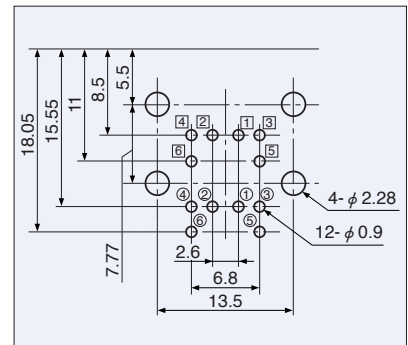
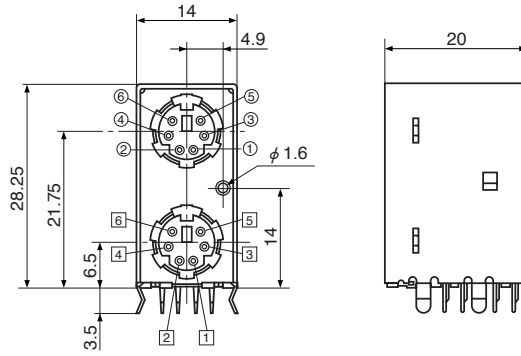
Separating Force:

5.9 N to 29 N {0.6 kgf to 3 kgf}

TCS7713 Series



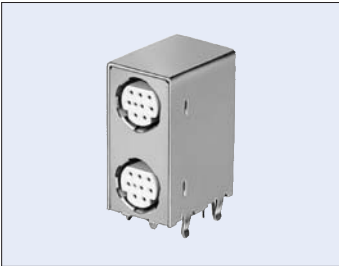
TCS7713-1166287 (6P)



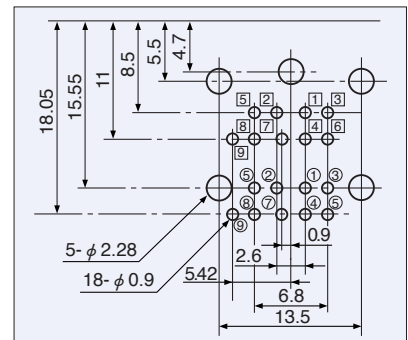
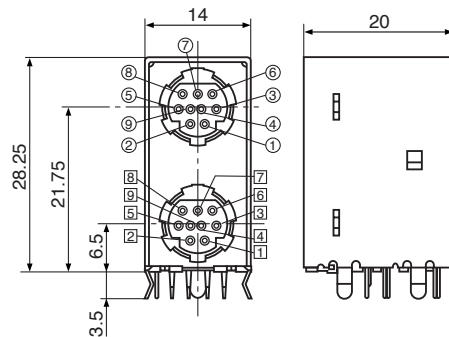
Hole Layout
(Bottom View)

Combinations with plugs: TCP8360 (See Page 8)

TCS7713 Series



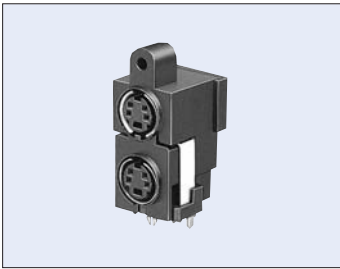
TCS7713-0199387 (9P)



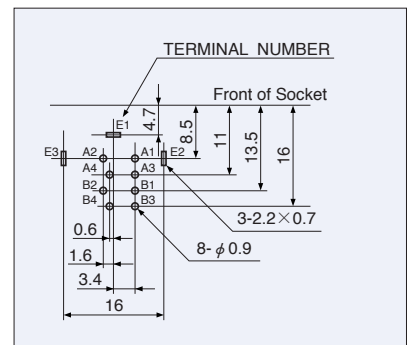
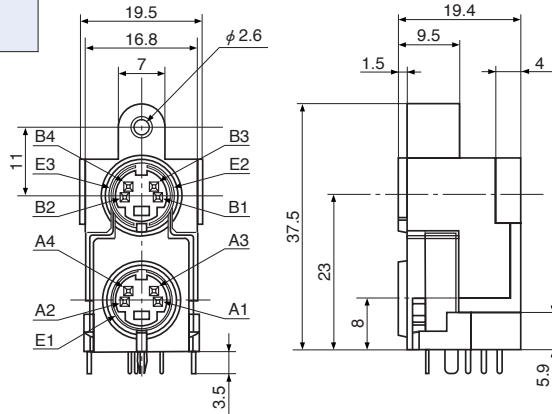
Hole Layout
(Bottom View)

Combinations with plugs: TCP8939-29 (See Page 28)

TCX0310 Series



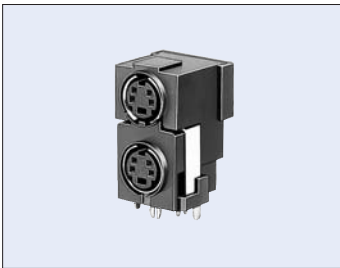
TCX0310-01-010177



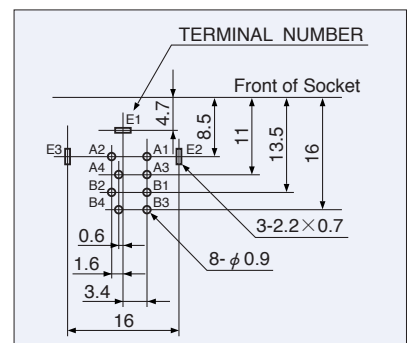
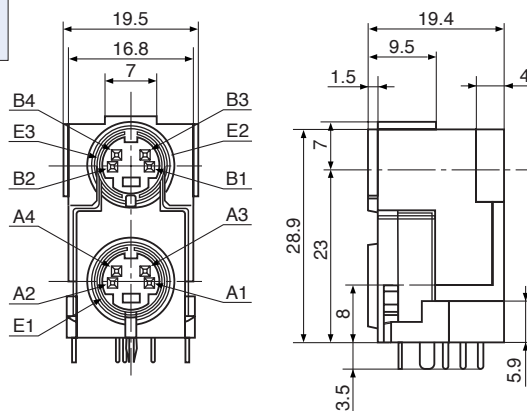
Combinations with plugs: TCX4115 (See Page 11)

Hole Layout
(Bottom View)

TCX0310 Series



TCX0310-110177



Combinations with plugs: TCX4115 (See Page 11)

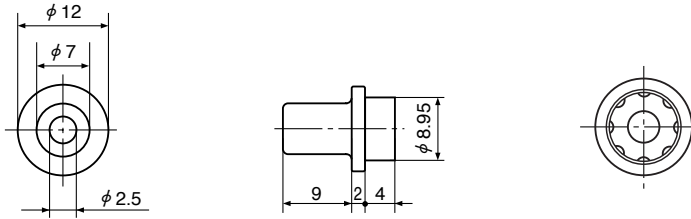
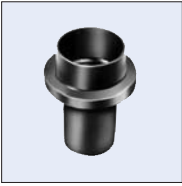
Hole Layout
(Bottom View)

Insulating Caps

Unit:mm

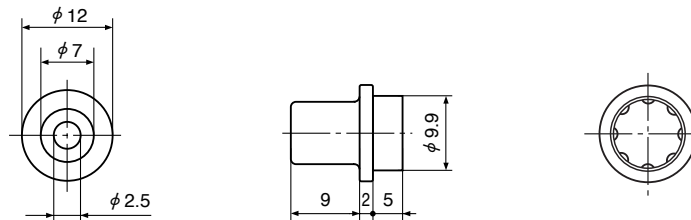
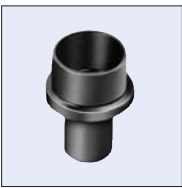
■ Insulating Caps can be used for dust protection and protection of ICs from damage caused by electrostatic discharge from outside of electronic equipment.

TCP9906-01-0100



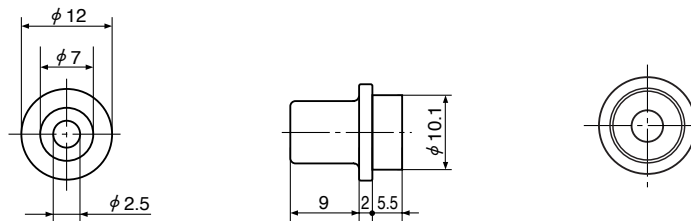
Combinations with Sockets: TCS7500, TCS7600 Series

TCP9907-01-0100



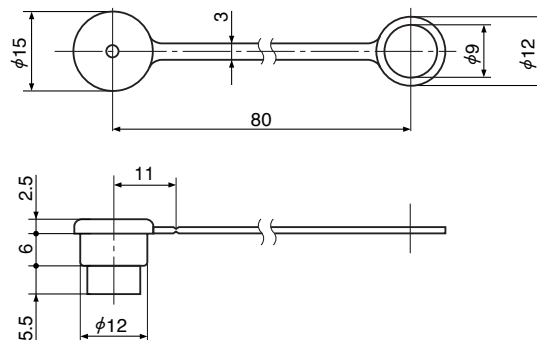
Combinations with Sockets: TCS7928, TCS7913, TCS7712 Series

TCP9910-010100



Combinations with Sockets: TCS6100 Series

TCP9911-010100



Combinations with Sockets: TCS61□5, TCS6100 Series