

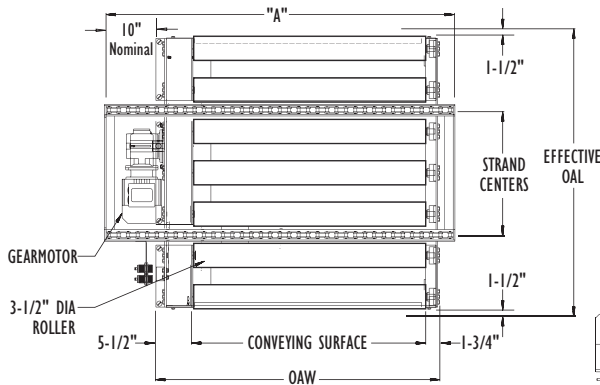
Systems Accessories

35 Roller Transfer

The 35 Roller Transfer is mounted in a Model DC-60 or DCEZ-60 and is used to transfer product from one DC-60 to another DC-60. The 35 Roller Transfer uses 3-1/2" dia x 9 ga. rollers mounted on 6" centers. Air bags lift the transfer mechanism. The 35 Roller Transfer uses a 1/3 HP gearmotor to provide constant 30 FPM.

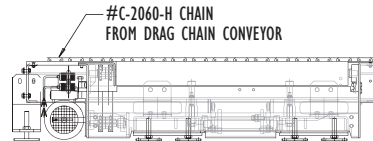
Shown with Optional 2-Strand Drag Chain.

See DC-60 or DCEZ-60 for Drag Chain Specifications.



EFFECTIVE OAL	STRAND CENTERS
42"	18"
48"	24"
54"	30"
60"	36"
66"	42"
72"	48"

OAW	CONVEYING SURFACE	DIM "A"
41"	33-3/4"	51"
44"	36-3/4"	54"
47"	39-3/4"	57"
50"	42-3/4"	60"
53"	45-3/4"	63"
56"	48-3/4"	66"
59"	51-3/4"	69"
62"	54-3/4"	72"
65"	57-3/4"	75"
68"	60-3/4"	78"
71"	63-3/4"	81"
74"	66-3/4"	84"

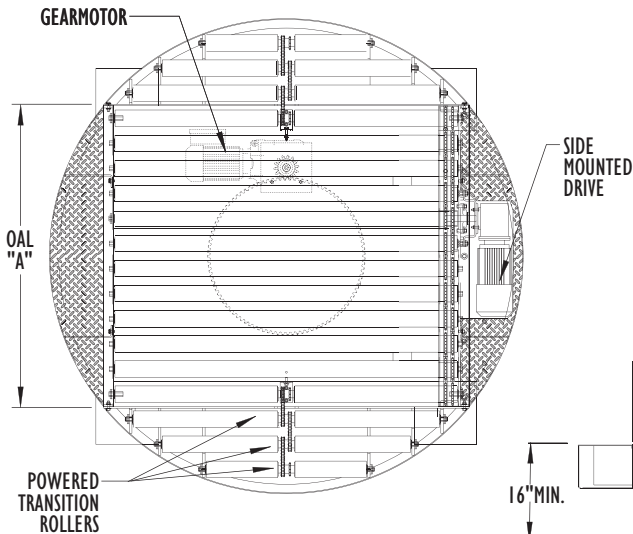


NOTE: Extended Type & Conveyor to Conveyor Type available, contact factory.

MAXIMUM LOAD 3000 LBS. AT 30 FPM

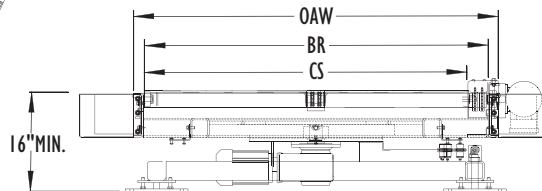
26-CRPT Power Rotated Turntable

The 26 CRPT is used to rotate products up to 360 degrees. The turntable is powered by a shaft mounted gearmotor complete with variable speed controller for soft start/stop and has proximity switches mounted on the base to sense position and control rotation of product. Turntable speed is 3 Revolutions per minute with a 1 HP 460/3/60 gearmotor. An 8-wire collector ring allows unlimited rotation of turntable. Powered transition rollers, mounted on apron of turntable deck, help move product onto and off of turntable. The 26 CRR section has a Side Mounted Drive contained within the turning radius of the turntable. Standard speed is 30 FPM with 1/2 HP 460/3/60 gearmotor. The tread rollers are 2-5/8 in. diameter with 7 gauge wall on 4 in. roller centers and have 2-5/8 in. dia. x .219 wall drive rollers with heavy duty bearings. Also available; gravity transition rollers; external transition roller sections (mounted to mating conveyors to fill in gap created by radius of turntable). Minimum Elevation - 16 inches.



OAL	OAW	BR	CS	WEIGHT
Available in 44" 48" 52" 56" 60" Only	44-1/4"	41"	37-3/4"	1990
	46-1/4"	43"	39-3/4"	2108
	48-1/4"	45"	41-3/4"	2226
	50-1/4"	47"	43-3/4"	2344
	52-1/4"	49"	45-3/4"	2462
	54-1/4"	51"	47-3/4"	2580
	56-1/4"	53"	49-3/4"	2690
	58-1/4"	55"	51-3/4"	2816
	60-1/4"	57"	53-3/4"	2934
	62-1/4"	59"	55-3/4"	3052
	64-1/4"	61"	57-3/4"	3170
66-1/4"	63"	59-3/4"	3288	
68-1/4"	65"	61-3/4"	3406	
70-1/4"	67"	63-3/4"	3524	

All weights in catalog are conveyor weights only. Accessories, crating, etc. are not included



MAXIMUM LOAD 4000 LBS.

